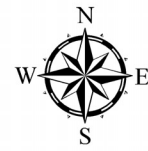
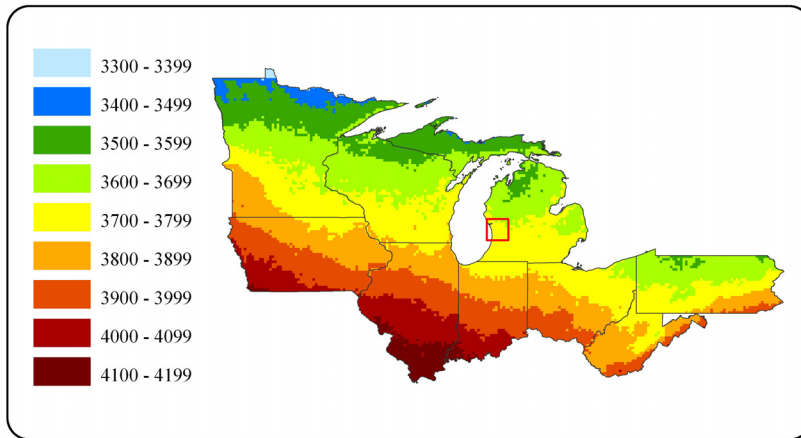
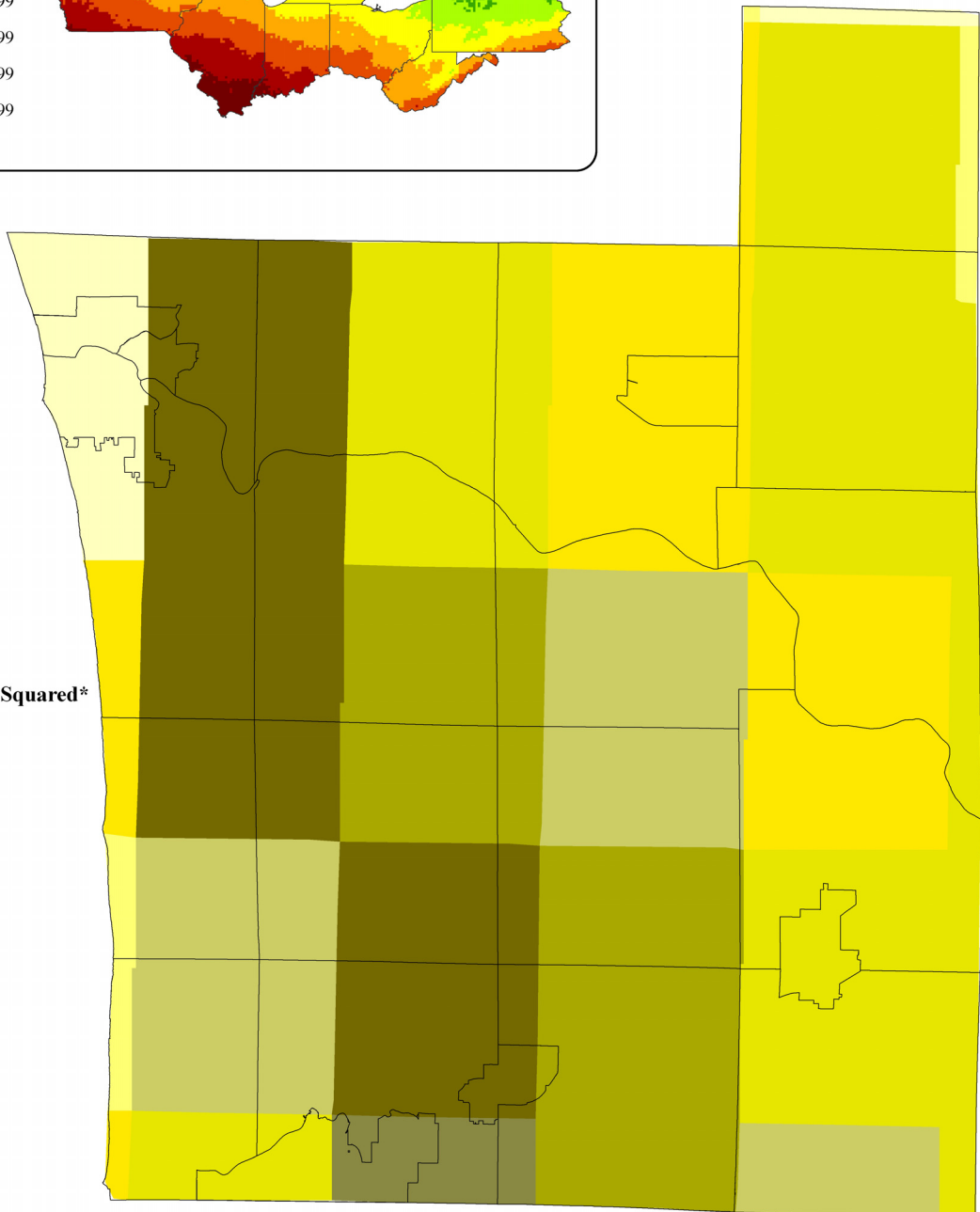
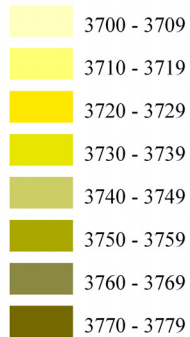


# Solar Radiation (Ottawa County)



## Legend

### Watt Hours/Meter Squared\*



Source: State University of New York/Albany, NREL (National Renewable Energy Laboratory), Ottawa County GIS

\* This map depicts the annual average daily solar energy potential, which represents the average amount of sun available per day throughout the year. Also known as Peak Sun Hours, these data can be used for calculation purposes in the design of a solar power system. Watt hours/meter squared is defined as the amount of solar energy received in one hour on a one-square meter (10.7 square feet) surface directed toward the sun.

Please note that this map is intended to be used as a guide in determining the solar energy potential in a general vicinity. Since solar resources at a micro level can vary significantly, a professional evaluation should be conducted for a specific area of interest prior to installing solar panels.

## Solar Radiation (Ottawa County, Municipality)

### Annual Solar Radiation (Watt Hours Per Meter Squared)

Unit of Government	3700 to 3709		3710 to 3719		3720 to 3729		3730 to 3739		3740 to 3749		3750 to 3759		3760 to 3769		3770 to 3779		Total Acreage*		
	Acreage	%	Acreage	%	Acreage	%	Acreage	%	Acreage	%	Acreage	%	Acreage	%	Acreage	%			
<b>City/Village</b>																			
Coopersville	0.0	0.0%	0.0	0.0%	3,047.8	100%	0.0	0.0%	0.0	0.0%	0.0	0.0%	0.0	0.0%	0.0	0.0%	0.0	0.0%	3,047.8
Ferrysburg	1,943.9	85.2%	0.0	0.0%	0.0	0.0%	0.0	0.0%	0.0	0.0%	0.0	0.0%	0.0	0.0%	0.0	0.0%	337.4	14.8%	2,281.3
Grand Haven	3,442.3	86.2%	0.0	0.0%	0.0	0.0%	0.0	0.0%	0.0	0.0%	0.0	0.0%	0.0	0.0%	0.0	0.0%	551.2	13.8%	3,993.5
Holland**	0.0	0.0%	0.0	0.0%	0.0	0.0%	2,844.6	49.2%	3.4	0.1%	0.0	0.0%	2,857.8	49.5%	71.8	1.2%	5,777.6		
Hudsonville	0.0	0.0%	0.0	0.0%	0.0	0.0%	2,650.8	100%	0.0	0.0%	0.0	0.0%	0.0	0.0%	0.0	0.0%	0.0	0.0%	2,650.8
Spring Lake	345.1	31.0%	0.0	0.0%	0.0	0.0%	0.0	0.0%	0.0	0.0%	0.0	0.0%	0.0	0.0%	0.0	0.0%	768.1	69.0%	1,113.2
Zeeland	0.0	0.0%	0.0	0.0%	0.0	0.0%	0.0	0.0%	0.0	0.0%	352.2	18.3%	51.9	2.7%	1,515.9	79.0%	1,920.0		
<b>Township</b>																			
Allendale	0.0	0.0%	0.0	0.0%	3,956.8	19.3%	831.4	4.0%	12,627.5	61.5%	3,116.7	15.2%	0.0	0.0%	0.0	0.0%	0.0	0.0%	20,532.4
Blendon	0.0	0.0%	0.0	0.0%	0.0	0.0%	1.5	0.1%	9,464.3	40.6%	11,804.1	50.7%	0.0	0.0%	2,001.2	8.6%	23,271.1		
Chester	1,339.4	5.9%	104.4	0.4%	3,251.6	14.2%	18,190.7	79.5%	0.0	0.0%	0.0	0.0%	0.0	0.0%	0.0	0.0%	0.0	0.0%	22,886.1
Crockery	0.0	0.0%	0.0	0.0%	0.0	0.0%	13,268.2	62.3%	0.0	0.0%	0.0	0.0%	0.0	0.0%	0.0	0.0%	8,044.0	37.7%	21,312.2
Georgetown	0.0	0.0%	0.0	0.0%	10,989.2	50.5%	10,232.1	47.1%	363.1	1.7%	162.3	0.7%	0.0	0.0%	0.0	0.0%	0.0	0.0%	21,746.7
Grand Haven	3,223.6	17.0%	0.0	0.0%	2,936.2	15.5%	0.0	0.0%	0.0	0.0%	0.0	0.0%	0.0	0.0%	0.0	0.0%	12,787.9	67.5%	18,947.7
Holland	0.0	0.0%	0.0	0.0%	0.0	0.0%	546.2	3.1%	4,755.1	27.0%	0.0	0.0%	2,828.5	16.1%	9,464.8	53.8%	17,594.6		
Jamestown	0.0	0.0%	0.0	0.0%	0.0	0.0%	15,310.9	67.6%	7,200.7	31.8%	131.2	0.6%	0.0	0.0%	0.0	0.0%	0.0	0.0%	22,642.8
Olive	0.0	0.0%	0.0	0.0%	0.0	0.0%	0.0	0.0%	3,899.5	16.8%	7,506.4	32.4%	0.0	0.0%	11,756.5	50.8%	23,162.4		
Park	0.0	0.0%	1,328.2	9.8%	763.6	5.6%	3,703.0	27.3%	7,784.1	57.3%	0.0	0.0%	0.0	0.0%	0.0	0.0%	0.0	0.0%	13,578.9
Polkton	0.0	0.0%	0.0	0.0%	19,090.7	75.1%	6,319.8	24.9%	0.0	0.0%	0.0	0.0%	0.0	0.0%	0.0	0.0%	0.0	0.0%	25,410.5
Port Sheldon	0.0	0.0%	1,299.8	9.0%	1,581.3	11.0%	0.0	0.0%	5,914.8	40.9%	0.0	0.0%	0.0	0.0%	5,650.1	39.1%	14,446.0		
Robinson	0.0	0.0%	0.0	0.0%	0.0	0.0%	5,938.8	23.5%	0.0	0.0%	9,729.8	38.5%	0.0	0.0%	9,580.4	38.0%	25,249.0		
Spring Lake	3,654.7	34.3%	0.0	0.0%	0.0	0.0%	0.0	0.0%	0.0	0.0%	0.0	0.0%	0.0	0.0%	6,994.5	65.7%	10,649.2		
Tallmadge	0.0	0.0%	0.0	0.0%	10,496.9	49.7%	10,621.7	50.3%	0.0	0.0%	0.0	0.0%	0.0	0.0%	0.0	0.0%	0.0	0.0%	21,118.6
Wright	0.0	0.0%	427.8	1.9%	1,297.7	5.6%	21,397.2	92.5%	0.0	0.0%	0.0	0.0%	0.0	0.0%	0.0	0.0%	0.0	0.0%	23,122.7
Zeeland	0.0	0.0%	0.0	0.0%	0.0	0.0%	7.1	0.1%	0.0	0.0%	19,199.5	87.1%	1,301.2	5.9%	1,517.7	6.9%	22,025.5		
<b>Ottawa County</b>	<b>13,949.0</b>	<b>3.8%</b>	<b>3,160.2</b>	<b>0.8%</b>	<b>57,411.8</b>	<b>15.6%</b>	<b>111,864.0</b>	<b>30.4%</b>	<b>52,012.5</b>	<b>14.1%</b>	<b>52,002.2</b>	<b>14.1%</b>	<b>7,039.4</b>	<b>1.9%</b>	<b>71,041.5</b>	<b>19.3%</b>	<b>368,480.6</b>		

Source: State University of New York/Albany, NREL (National Renewable Energy Laboratory), Ottawa County GIS

\* The acreage will vary slightly depending on the source

\*\*This represents the portion of Holland City located within Ottawa County