



County of Ottawa
Office of the Water Resources Commissioner

Joe Bush
Commissioner

Shaun McLarty
*Chief Deputy
Commissioner*

12220 Fillmore, Room 141, West Olive, MI 49460 Ph.(616) 994-4530 FAX (616) 994-4529 Email waterresourcescommissioner@miottawa.org

NOTICE OF DRAIN MAINTENANCE

December 01, 2023

Recently an inspection was made of the **Allendale No. 1 Drain** which runs through or near your property. The result of the inspection was that maintenance including **brush, tree, and sediment removal is necessary**. During the next three weeks, contractors will be walking the drain/drainage easement to prepare their bid for the work. A follow-up letter will be sent out once we know who the contractor will be and their schedule.

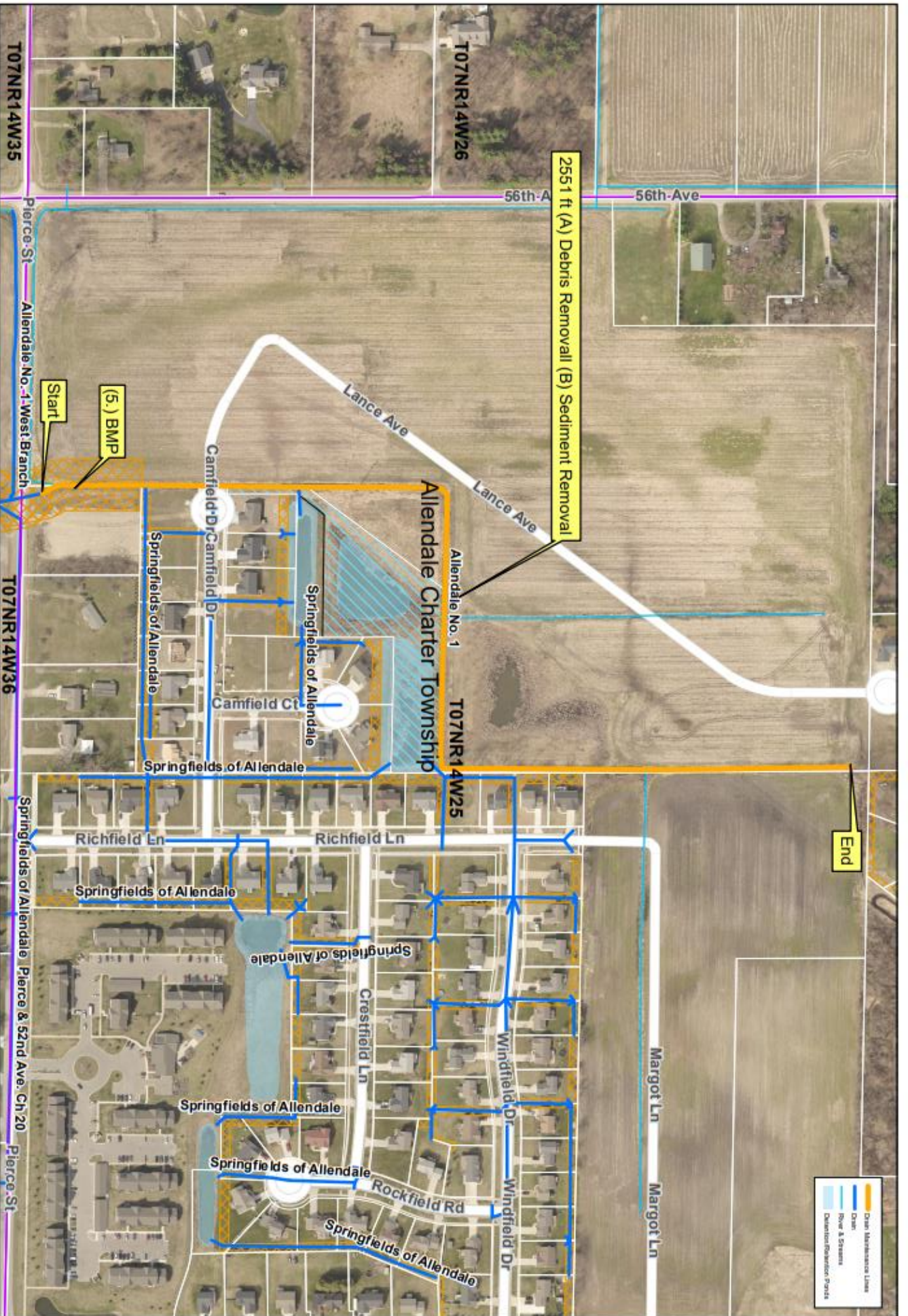
As soon as possible, please mark any and all structures in the drainage easement (invisible dog fences, underground sprinkling, sump lines/tile outlet, property corner pins, etc.). Contractors will not be held responsible for anything damaged that was unmarked.

Your cooperation is always appreciated in these matters. Should you have any questions, concerns, or input that you would like us to consider, feel free to contact us at (616) 994-4530 or email waterresourcescommissioner@miottawa.org.

Thank You,

Emily Grasch
Drain Inspector

Encl: Map of the proposed drain maintenance area (on the back of this letter)

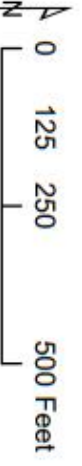


2551 ft (A) Debris Removal (B) Sediment Removal

(5.) BMP

End

- Drain Maintenance Lines
- Drain
- River & Stream
- Obstruction/Retention Ponds



Ottawa County Water Resources
Allendale No. 1 Drain Clean Out
 BPM: (5.) Perimeter Sediment Control Measures

Section: Allendale Twp Sec 25
 Length: 1,817 ft Cleanout
 Drain length: 4570 ft
 Easement: ft