



**County of Ottawa**  
*Office of the Water Resources Commissioner*

Joe Bush  
Commissioner

Linda Brown  
Chief Deputy

---

12220 Fillmore, Room 141, West Olive, MI 49460 Ph.(616) 994-4530 FAX (616) 994-4529 Email [waterresourcescommissioner@miottawa.org](mailto:waterresourcescommissioner@miottawa.org)

## NOTICE OF DRAIN MAINTENANCE

December 6, 2017

Recently an inspection was made of the **No. 8 & North Holland Drain** which runs through or near your property. The result of the inspection was that maintenance including brush, tree, and sediment removal is necessary. During the next two weeks, contractors will be walking the drain/drainage easement to prepare their bid for the work. A follow-up letter will be sent out once we know who the contractor will be and their schedule.

As soon as possible, please mark any and all structures in the drainage easement (invisible dog fences, underground sprinkling, sump lines/tile outlet, property corner pins, etc.). Contractors will not be held responsible for anything damaged that was unmarked.

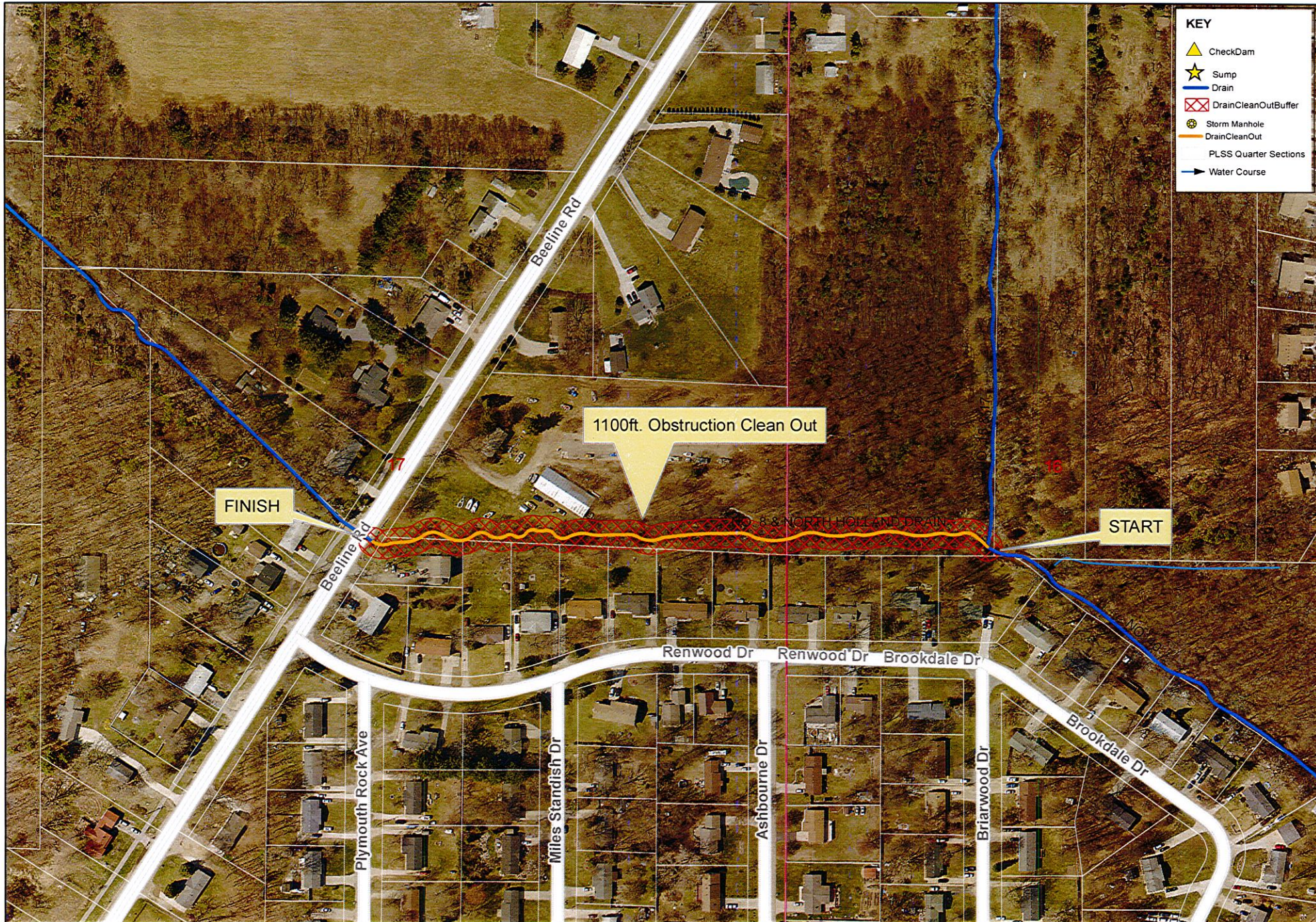
Your cooperation is always appreciated in these matters. Should you have any questions, concerns, or input that you would like us to consider, feel free to contact us at (616) 994-4530 or email [waterresourcescommissioner@miottawa.org](mailto:waterresourcescommissioner@miottawa.org).

Thank You,

Chris Machiela  
Drain Inspector

cc: Holland Township

Encl: Map of the proposed drain maintenance area (on the back of this letter)



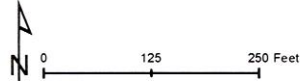
KEY	
	CheckDam
	Sump
	Drain
	DrainCleanOutBuffer
	Storm Manhole
	DrainCleanOut
	PLS Quarter Sections
	Water Course

1100ft. Obstruction Clean Out

FINISH

START

No. 8 & NORTH HOLLAND DRAIN



**Ottawa County Water Resources  
No.8 & north Holland Drain Clean Out**

Section Town Range: Holland 17 & 18  
Soil: Loamy Sand  
Length: 1100 ft Cleanout  
Drain length: 3.9 miles  
Easement: 35ft