



**County of Ottawa**  
*Office of the Water Resources Commissioner*

**Joe Bush**  
*Commissioner*

**Linda Brown**  
*Chief Deputy*

---

12220 Fillmore, Room 141, West Olive, MI 49460 Ph.(616) 994-4530 FAX (616) 994-4529 Email [waterresourcescommissioner@miottawa.org](mailto:waterresourcescommissioner@miottawa.org)

## **NOTICE OF DRAIN MAINTENANCE**

May 23, 2018

Recently an inspection was made of the **Bass Creek Arm Drain** which runs through or near your property. The result of the inspection was that maintenance including brush, tree, and sediment removal is necessary. During the next two weeks, contractors will be walking the drain/drainage easement to prepare their bid for the work. A follow-up letter will be sent out once we know who the contractor will be and their schedule.

As soon as possible, please mark any and all structures in the drainage easement (invisible dog fences, underground sprinkling, sump lines/tile outlet, property corner pins, etc.). Contractors will not be held responsible for anything damaged that was unmarked.

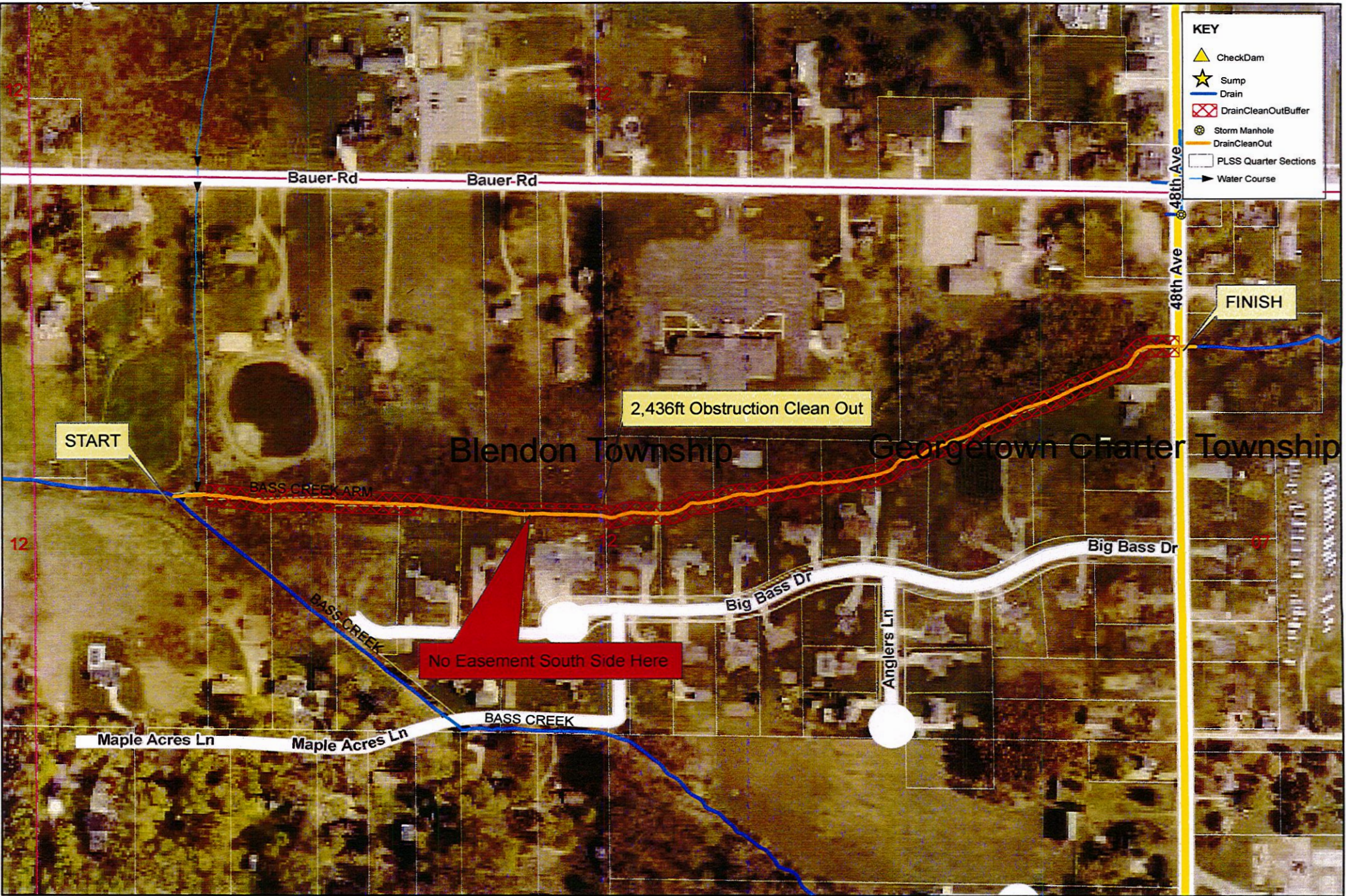
Your cooperation is always appreciated in these matters. Should you have any questions, concerns, or input that you would like us to consider, feel free to contact us at (616) 994-4530 or email [waterresourcescommissioner@miottawa.org](mailto:waterresourcescommissioner@miottawa.org).

Thank You,

Chris Machiela  
Drain Inspector

cc: Blendon Township

Encl: Map of the proposed drain maintenance area (on the back of this letter)



**KEY**

- CheckDam
- Sump
- Drain
- DrainCleanOutBuffer
- Storm Manhole
- DrainCleanOut
- PLSS Quarter Sections
- Water Course

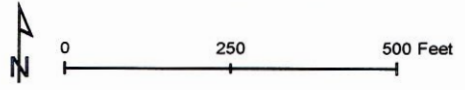
2,436ft Obstruction Clean Out

START

FINISH

No Easement South Side Here

Blendon Township      Georgetown Charter Township



**Ottawa County Water Resources  
Bass Creek Arm Drain Clean Out**

Section Town Range: Blendon Sec 24  
Soil: Silt,Loam  
Length: 2,436 ft Cleanout  
Drain length: 3190ft  
Easement: 2,436 feet