



Grand River Ravines Dog Park Planning Summary

**Public Input Meeting held at the
Vander Laan Room, Hager Park - Jenison, Michigan
September 9, 2014, 6:30 pm**

Attendees:

Approximately 20 members of the public attended the meeting. Specific individuals recorded were as follows:

Gary Tallman	Randall Troupe
Brian Gessler	Kevin Hurn
Kerri & Brett Evans	Michelle Maleski
Mike Beachchamp	Craig & Beth Kingma
Mark Kowitz	Richard Kucharski
Jeff Larabel	Michael & Maribeth Pearson
Tyson & Marcia Keane	Fred Geskus
Todd & Robin Sterner	Karen Hordyk
Jeremy Regnerus	

Park Staff and Public Officials:

John Scholtz	Ottawa County Parks Director
Curt TerHaar	Ottawa County Coord. of Park Planning & Dev.
Kyle Roffey	Ottawa County Parks Administrative Secretary
Jason Boerger	Ottawa County Coordinator of Park Maintenance & Operations
Ray Statema	Ottawa County Parks Board of Commissioners

Meeting Summary:

John Scholtz opened the meeting with introductions and proceeded to provide a brief overview of the county parks system

- The parks mission statement, size of the system, and the history of the Grand Ravines purchases and long-term goals for the site.

Curt TerHaar then presented the research and current details of the dog park plan:

- TerHaar visited several dog parks over the last several years, including Oakland County Parks, which has four regional dog parks. TerHaar stated he like the farm fencing they used and felt it would fit nicely with the theme of the Ravines, which includes an old barn.
- Initial goals for the project include providing a fenced small dog area, a fenced large dog area, and a fenced trail area. The small and large dog areas would have turf with a double-gated entrance to pass thru. From either area, visitors could enter the fenced off-leash trail area.
- An initial concept plan was presented showing layout of proposed uses
- Wyoming Dog Park, Quincy Dog Park, and Shaggy Pines amenities were shown.
- Potential amenities and facilities were discussed.

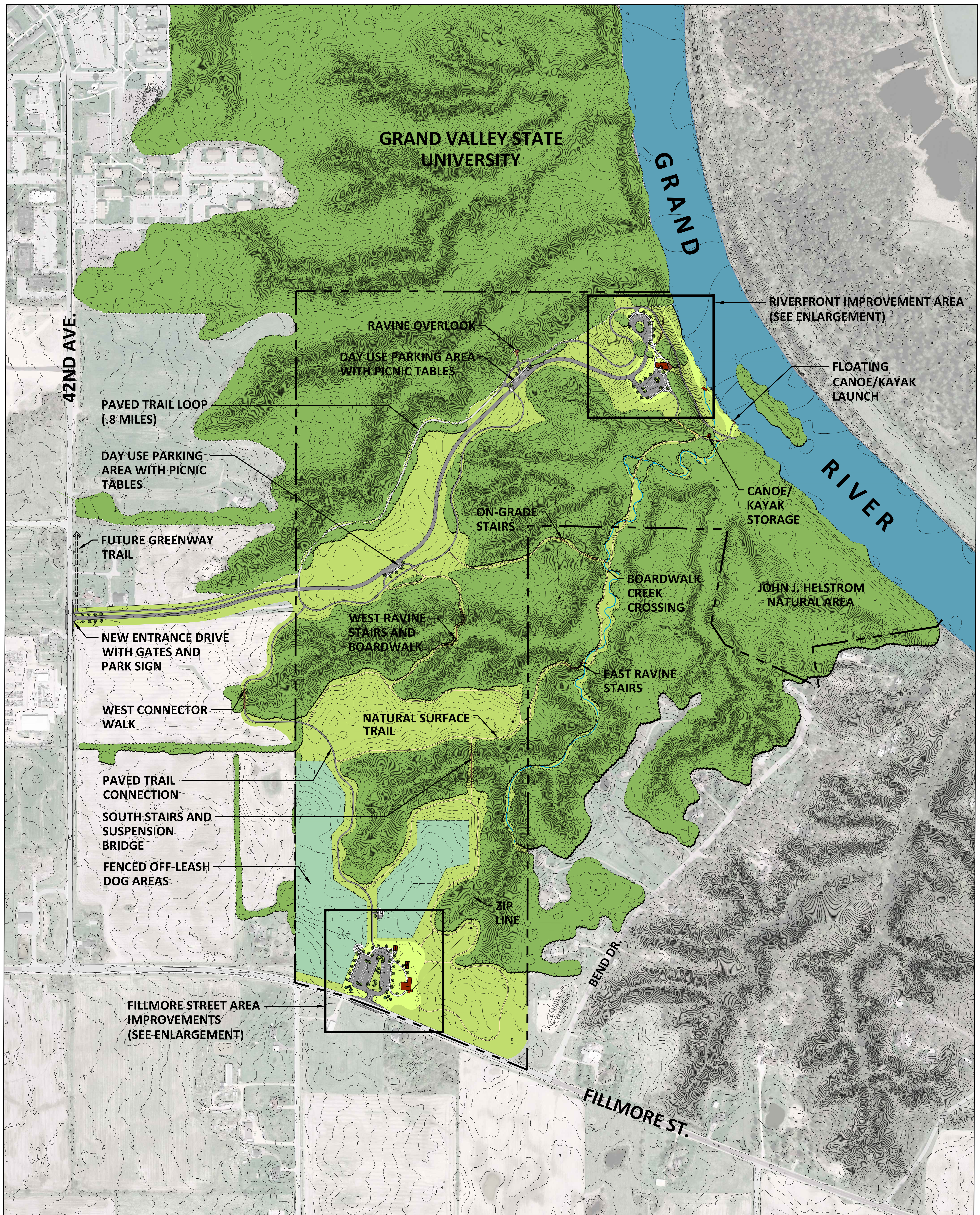
Comments/Discussion:

- Comments stated that water was a top amenity for the park.
- Suggestion was made to have water away from the double-fenced entrance and not to have picnic tables or benches close to the entrance to help eliminate congestion while entering and exiting the dog park.
- Suggestions were made for doggie bags and pickup receptacles to be located throughout the park to encourage visitors to clean up after their dogs. Biodegradable bags work best.
- Suggestion was made to have paved trails.
- Suggestion was made to plow the parking lot during the winter.
- Suggestion was made to have benches placed along the trail and in the fenced-in areas
- Suggestions were made to have a shelter in each fenced-in area for large and small dogs
- Suggestion was made to have trail signs of entire site along trails.
- Suggestion was made for shade trees.
- Question was asked if volunteers could help build the fence. Response: Boerger stated that even though putting up a fence seems labor intensive, it is mostly equipment doing the work of digging and stretching the fence wire.
- Suggestions to remove cherry trees since the pits are poisonous to dogs.

- Suggestions to have shelters the size of the larger ones at Quincy Park, which holds four picnic tables with cement floors that helps cool the dogs.
- Suggestion to have the large dog section as one until a need arises to split the area in two for grass restoration.
- Suggestion for parking lot lighting.
- Comments were made concerning fundraising opportunities.
- Suggestion for trail lights.
- Comment to improved trail conditions which in some areas are mucky after rains. There was a strong consensus that paved trails in high use areas are desirable.
- Suggestion for hose off area.
- Suggestion for modern restroom.
- Question was asked if there would be a time-gap between discontinuing dogs' off-leash at the Grand River Ravines site and having trails available at the Bend Area. Response: Parks will keep it available as long as it does not interfere with construction.
- Suggestion was made to use the barn as a modern restroom.

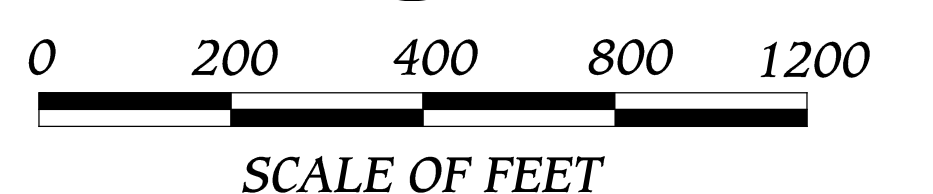
Comments from this meeting will be incorporated into a preliminary concept plan. Additional information will be posted on the web site. Meeting participants were encouraged to contact the Parks office with additional comments or questions.

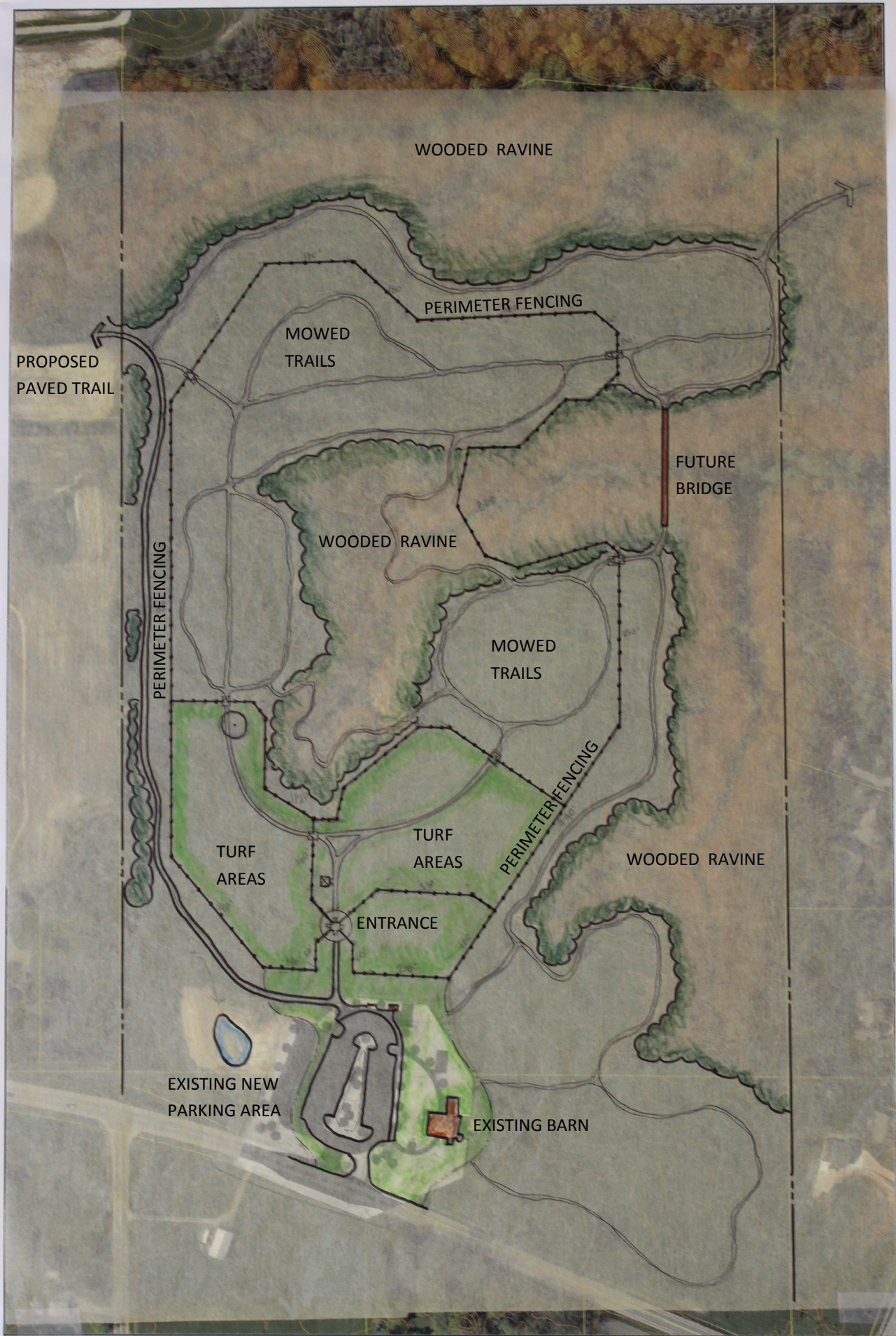
The meeting ended at approximately 7:45pm.



GRAND RIVER RAVINES OVERALL MASTER PLAN

FEBRUARY 6, 2013





Grand Ravines Off-leash Dog Area

