

Revenue Streams for West Michigan Watersheds: West Michigan Watersheds Collaborative



Ottawa County Water Quality Forum
November 13, 2015

About Our Region

13 Counties

341 Units of
Government

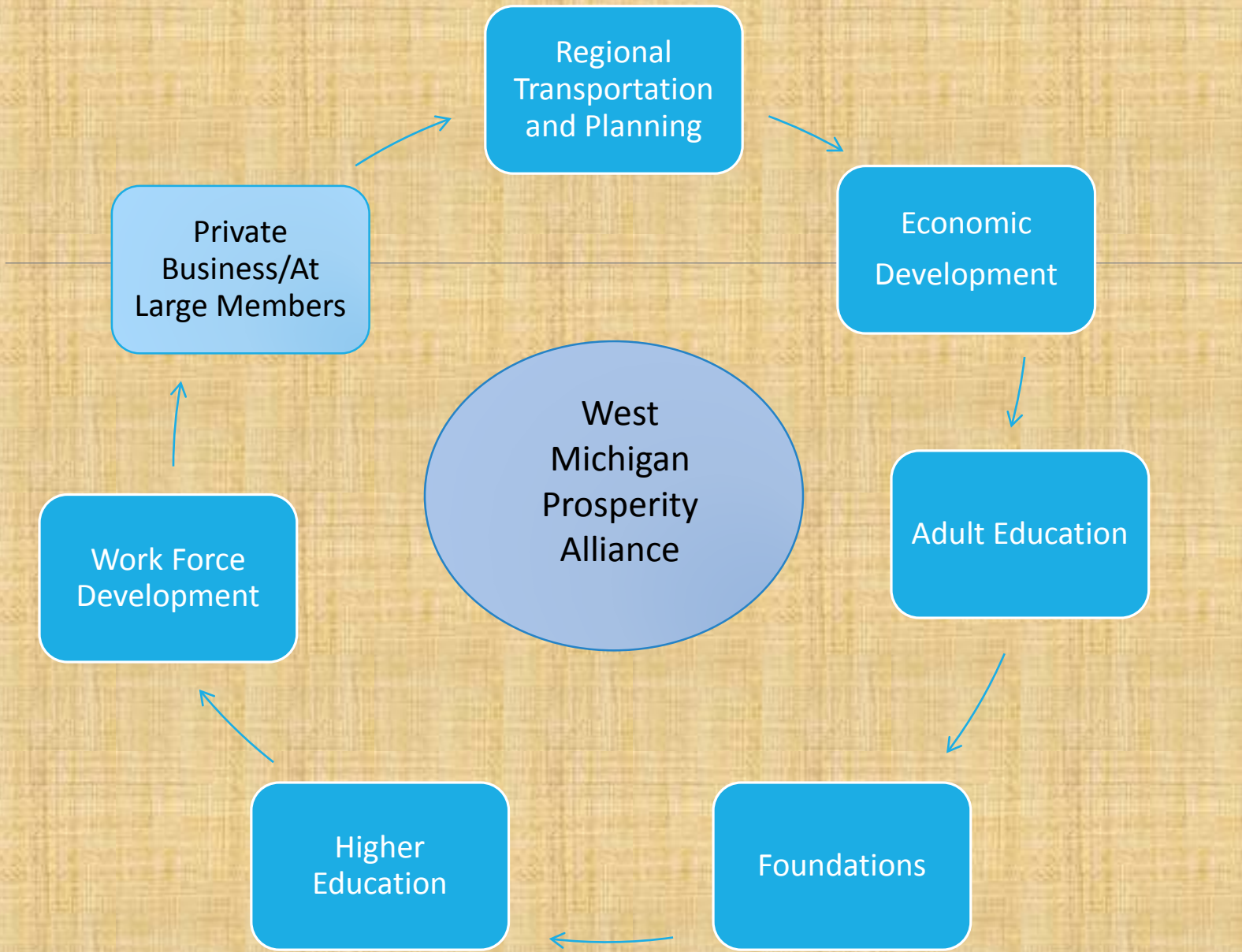
1,532,851 people
(15.5% of Michigan)

8,163 square miles,
about the same size as
the State of New Jersey

130 Miles of Lake
Michigan Shoreline and
extends 75 miles to the
heart of Michigan's
lower peninsula

Over **10,000** employers

Over **\$5.7** billion in
economic output



Regional
Transportation
and Planning

Economic
Development

Adult Education

Foundations

Higher
Education

Work Force
Development

Private
Business/At
Large Members

West
Michigan
Prosperity
Alliance

Regional Prosperity Initiative

- ❖ West Michigan Prosperity Alliance Steering Committee
- ❖ Requested regional project ideas
- ❖ 31 projects were submitted

Project Ranking

1. Port of Muskegon Regional Logistics Hub
2. **Protecting Lake Michigan Water Quality through Establishment of a Dedicated Revenue Stream for Watershed Management**
3. Connected Community Engagement Program, Technology Action Planning
4. Michigan Work Ready Communities
5. Emerge Regional Website Portal & E-Merge West Michigan
6. Michigan Works Strategic Redesign


Project Objectives

- ❖ Form West Michigan Watersheds Collaborative
- ❖ Summarize goals and needs
- ❖ Assess possible sources of funding and innovative approaches
- ❖ Develop model for sustainable funding
- ❖ *Timeline: April 2015-Sept 2016*
- ❖ *Budget: \$104,000 (\$89,000 grant)*



Lake Michigan Basin

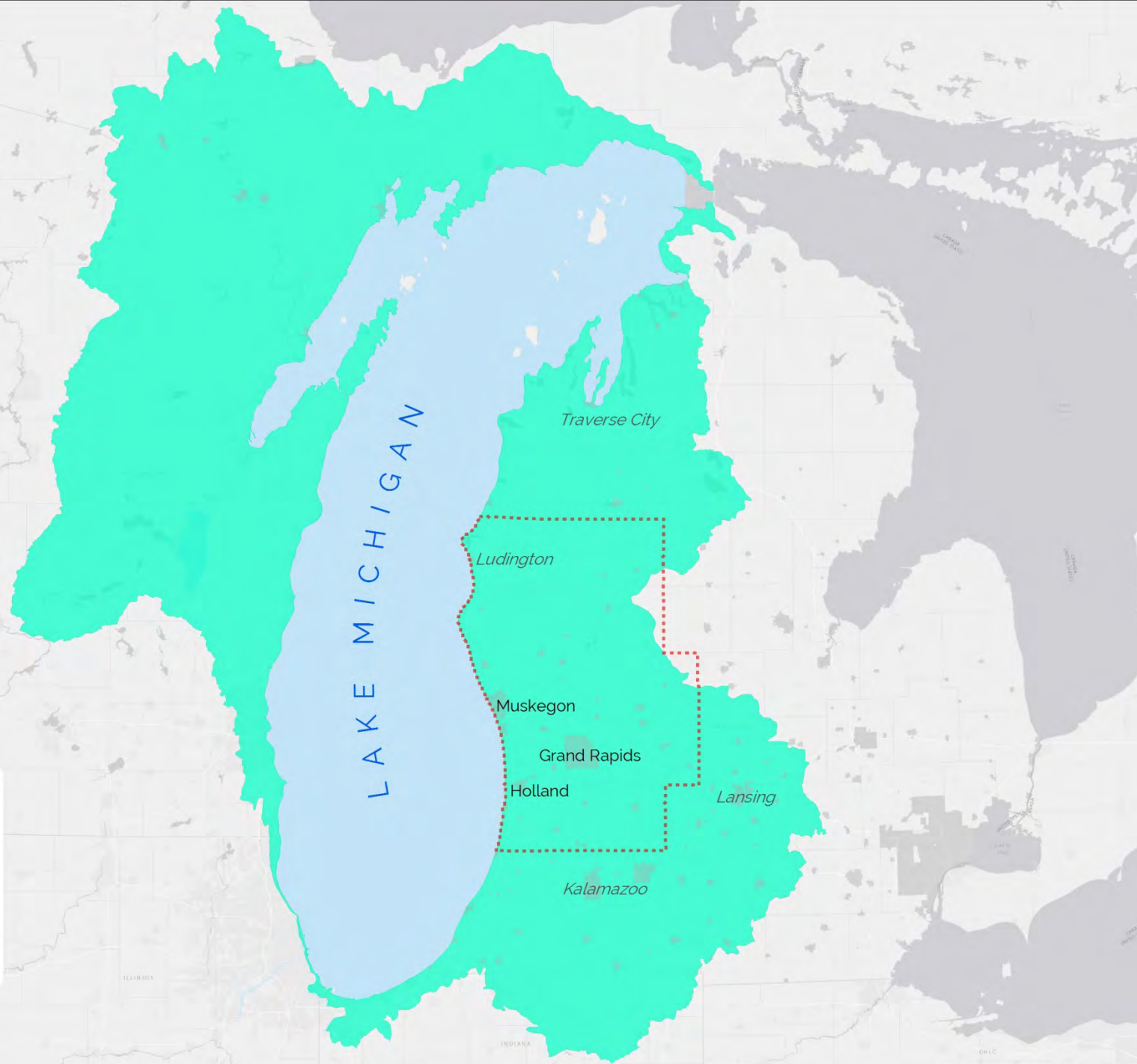
Map Legend

 RPI Region 4

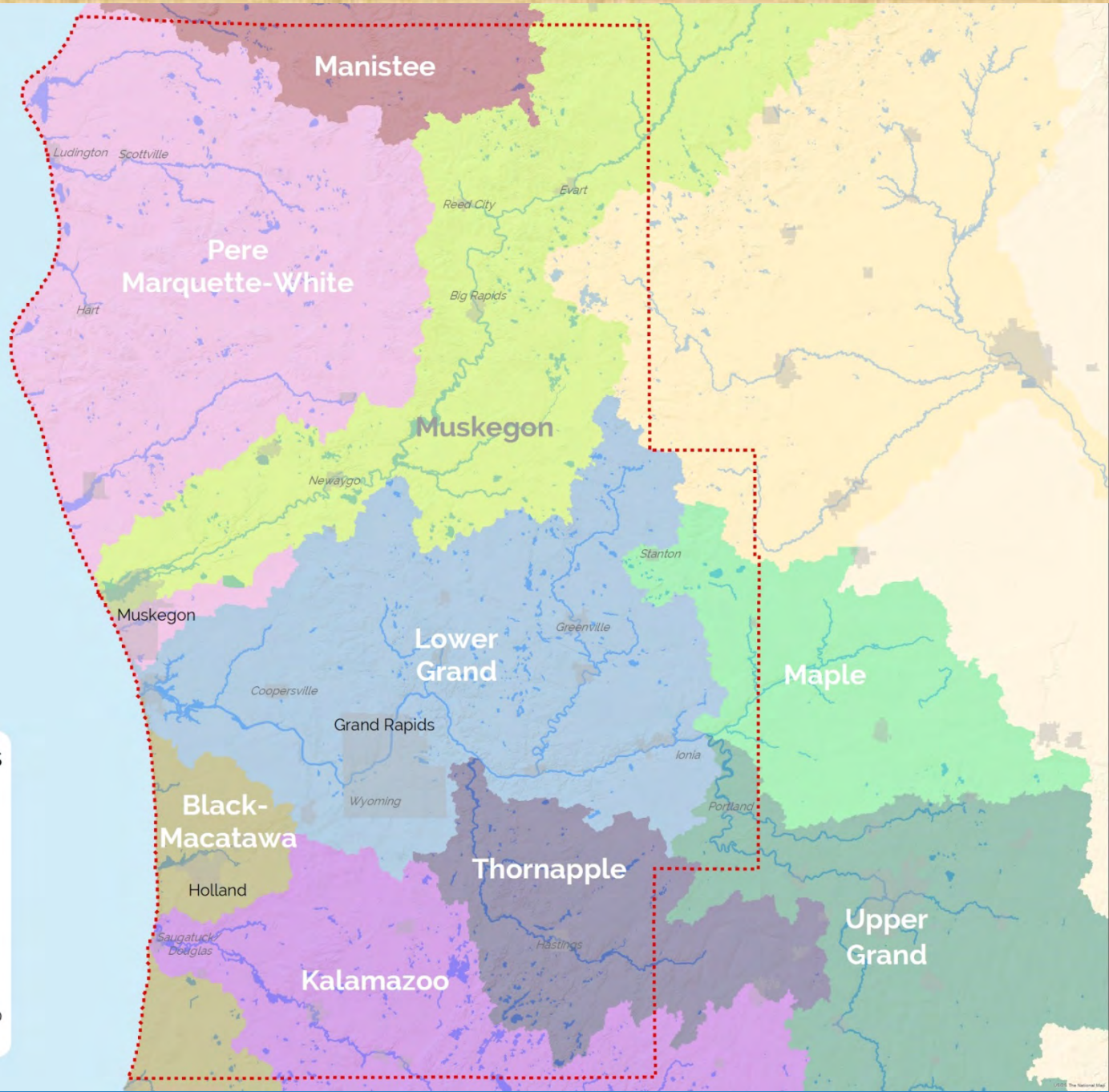
 Lake Michigan Basin



0 5 10 20 30 40
Miles



LAKE MICHIGAN



Region 4 Watersheds

Map Legend

- RPI Region 4
- Black-Macatawa
- Kalamazoo
- Lower Grand
- Manistee
- Maple
- Muskegon
- Pere Marquette-White
- Thornapple
- Upper Grand



Progress to Date



- ❖ Created identity for group
 - ❖ West Michigan Watersheds Collaborative
- ❖ Contacted over 40 partners with 319 Watershed Management Plans to participate
- ❖ June 23: initial meeting of WMWC
- ❖ Drafting regional water quality plan
- ❖ Drafting RFP for funding study

Water Quality Plan

- ❖ Summary of the RPI process
- ❖ Characteristics of the region
 - ❖ All watershed have impaired water bodies – *E. coli*, sediment, phosphorus, PCBs, Mercury
- ❖ Challenges and needs
 - ❖ Staffing, time, community participation, working with local governments
- ❖ Watershed fact sheets

Funding Study

- ❖ Hire financial consultant to complete study
 - ❖ Conduct assessment of possible sources and mechanisms of funding
 - ❖ Provide examples of innovative approaches used in other areas
 - ❖ Evaluate feasibility of approaches to adopt in this region
 - ❖ Recommend next steps

