

HEARING OF PRACTICABILITY

MDARD – Brady Harrington
Allegan County – Denise Medemar
Ottawa County – Ken Yonker (Special
Commissioner from Kent County)

April 13th, 2022



Outline

- Black Creek Confusion
- Consolidation
- Historical Challenges
- Watershed Information
- Goals
- Petition
- Maintenance
- Procedure/Next Steps

Black Creek Confusion

- Multiple Black Creek Drains
- Black River vs. Macatawa River
- Black Lake vs. Macatawa Lake
- Other Black Creek Drains

Consolidation

- Black Creek Drain
- Black River Improvement Drain of Holland Township
- Zeeland & Holland Black River Drain
- Zeeland Black Creek Drain
- Extension to Black Creek of Zeeland Drain
- Black Creek of Zeeland Intercounty Drain
- Black Creek of Zeeland Extension Drain
- Black Creek of Zeeland Drain Roeloff Branch
- Paw Paw Branch to Black River Drain

Why Consolidate?

- Multiple legal entities and drainage districts for the same watercourse
- Multiple entities for grant applications
- Fail to treat one watercourse as a holistic system

Historical Challenges

- Black Creek vs. Macatawa River
- Historical/Township Proceedings
- Old Survey Descriptions
- Lack of Detail
- Human Error/Penmanship

Historical Challenges

Said drain commences at a point 1502 ft N and 730 ft. N of S E 100 of sec. 25 T. 7 S R. 21 W. Thence S 62° W 432 ft: thence S 26° E 629 ft. From stake 0 to stake 0+15' a distance of 15 ft the drain is on the land of A. Willits. From stake 0+15' to stake 1+15' a distance of 100 ft the drain is on the land of Franklin Gowdy. From stake 9+55' to stake 10+35' a distance of 180 ft. the drain is on the land of John Filys. From stake 10+35' to stake 11+61' a distance of 65 ft the drain is on the right of way of Pere Marquette Railway Co. Total length of drain 1100 ft. Said drain to have a bottom width of 18 inches.

Historical Challenges

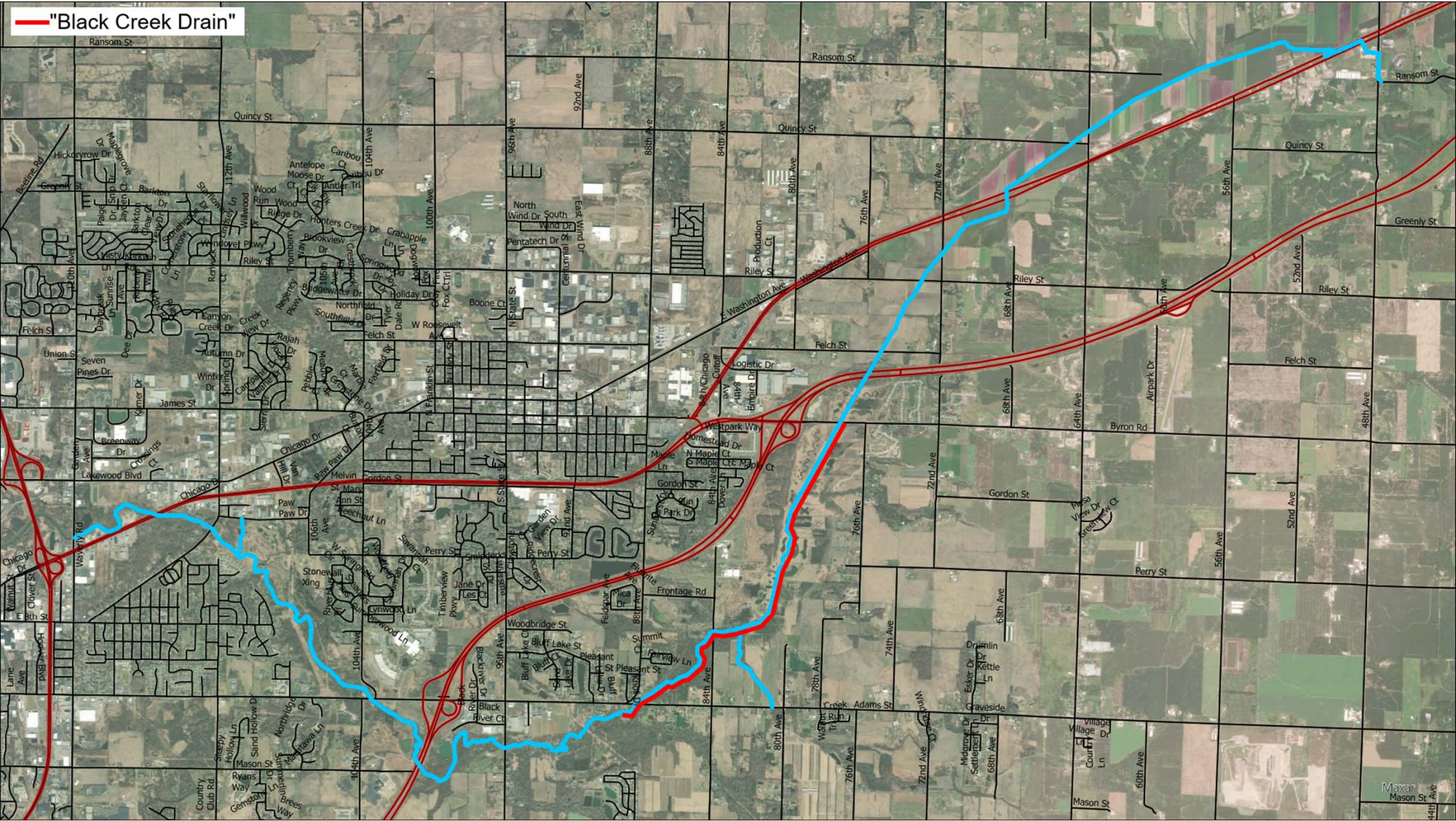
beginning excepting four rods
5 acres commencing at stake 15 chs. 30 links E of $\frac{1}{4}$ post
of S line of sec. 25 Twp. 7 S R. 21 W. Thence N of E. O. Alligors
E line 9.78 chs to Wm C. Babcocks S. line 5.11 chs thence S
9.78 chs to S line of sec. Thence W on said sec. line 5.11 chs to
place of beginning, F. M. Gowdy owns 4 acres and 8.5 rods
commencing at a point where there is now standing an

Oak tree, at or near the NW cor of land known as Peter
Garland acre tract. Being land purchased by Peter Garland
from Richard M. Goodwin. Thence N $40^{\circ}30'$ E 355 ft. Thence
S $30^{\circ}31'$ E 564 ft to a iron stake. Thence S $40^{\circ}30'$ W 370 ft to place
of beginning Alfred Willets owners.
The right was hereby conveyed and released is

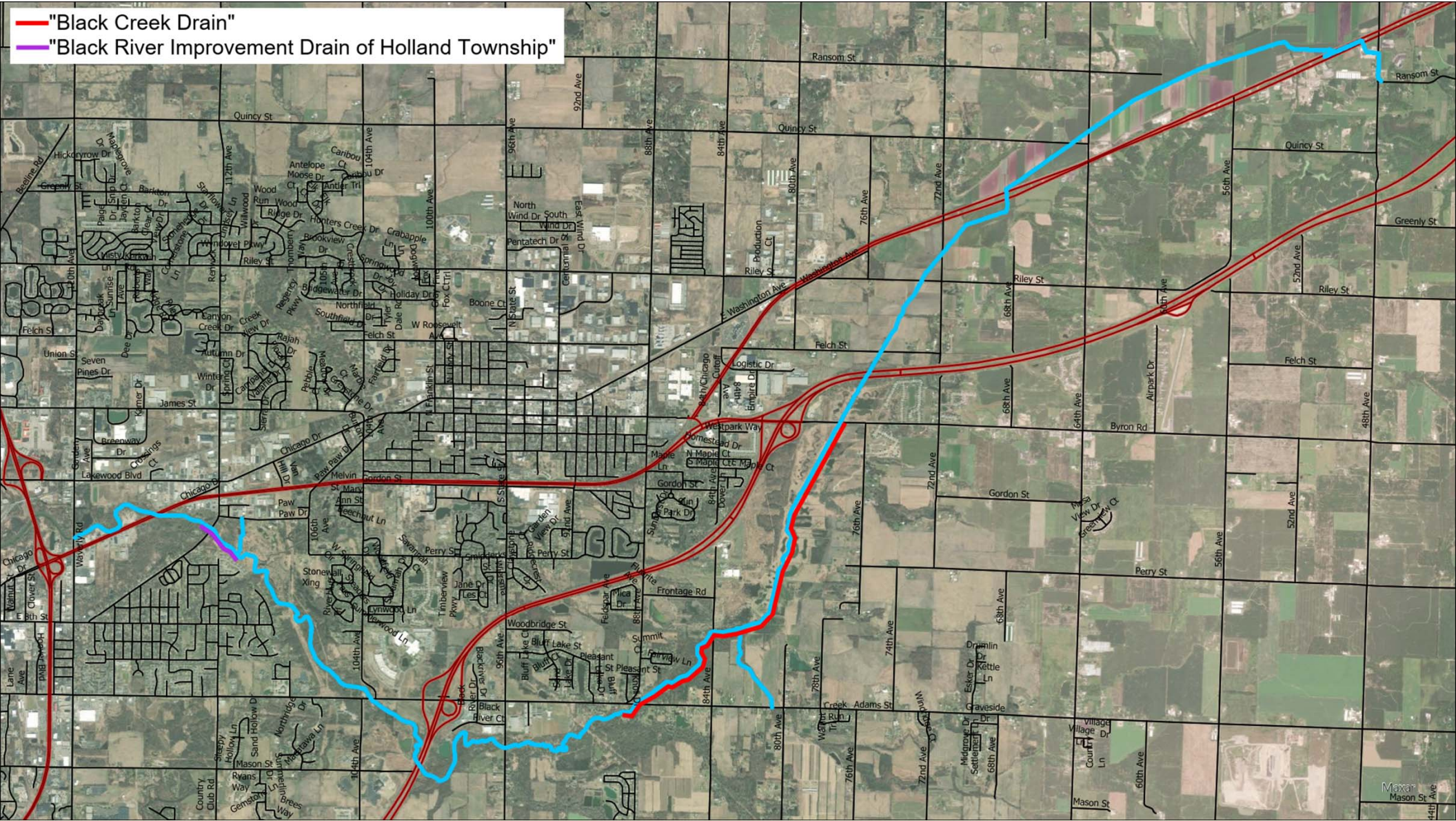
Historical Challenges

Laws of 1885, to be located substantially as follows, to-wit: Commencing at ^{South line of highway forty} rods East of N. E. Cor. of N. W. 1/4 of N. W. 1/4 of Section twenty four. Then to run in a North Western direction about thirty rods nearly across the land of Thomas Wilson, then in a Northern direction about thirty rods, then in a North Eastern direction about thirty rods all on the land of Thomas Wilson, then in a North Eastern direction about forty rods ^{run north on horse traps fault on his west line about forty rods} on the land of Eber Thomas, to intersect with the County ditch running East West in the Center of Section thirteen.

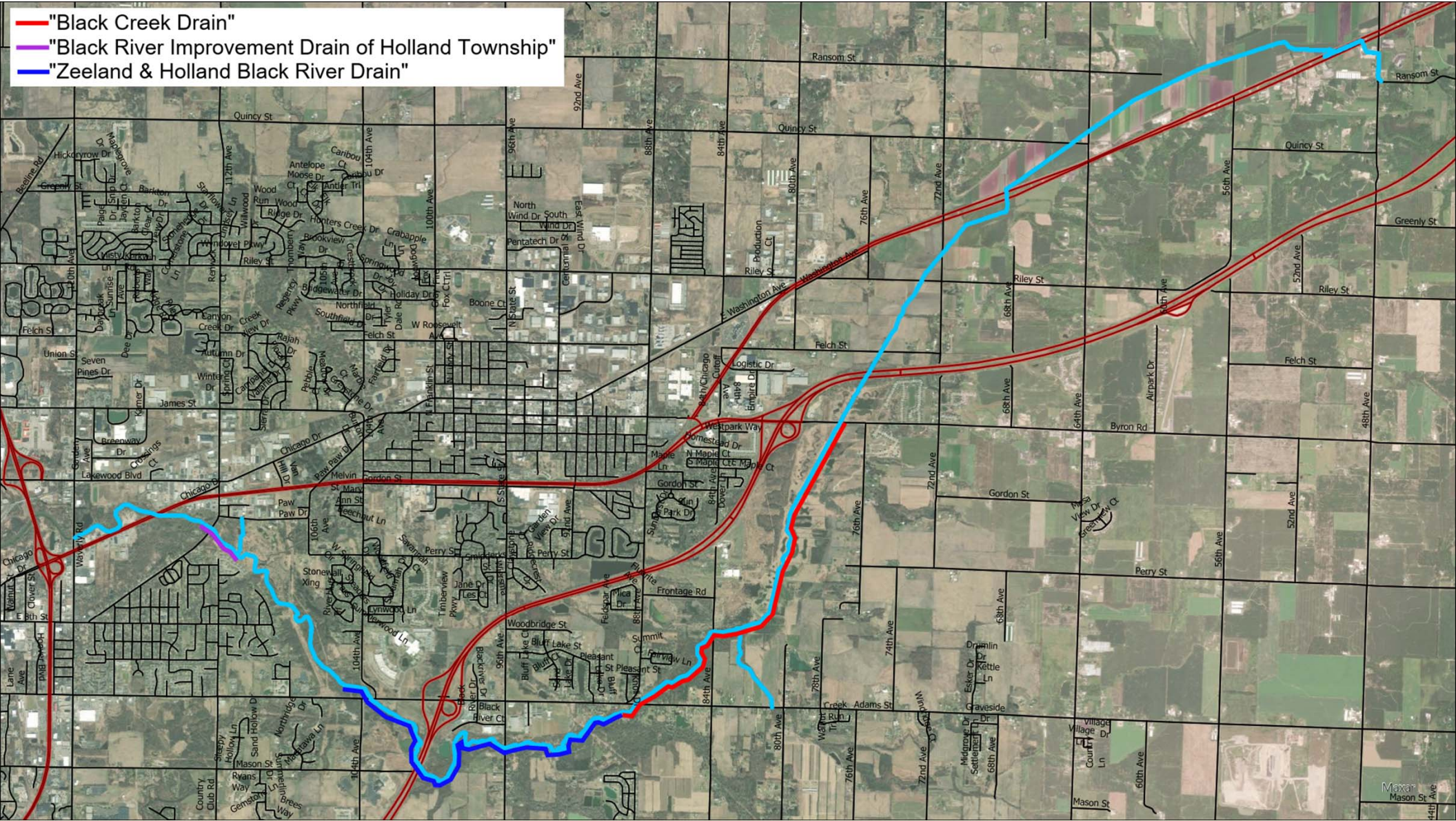
— "Black Creek Drain"



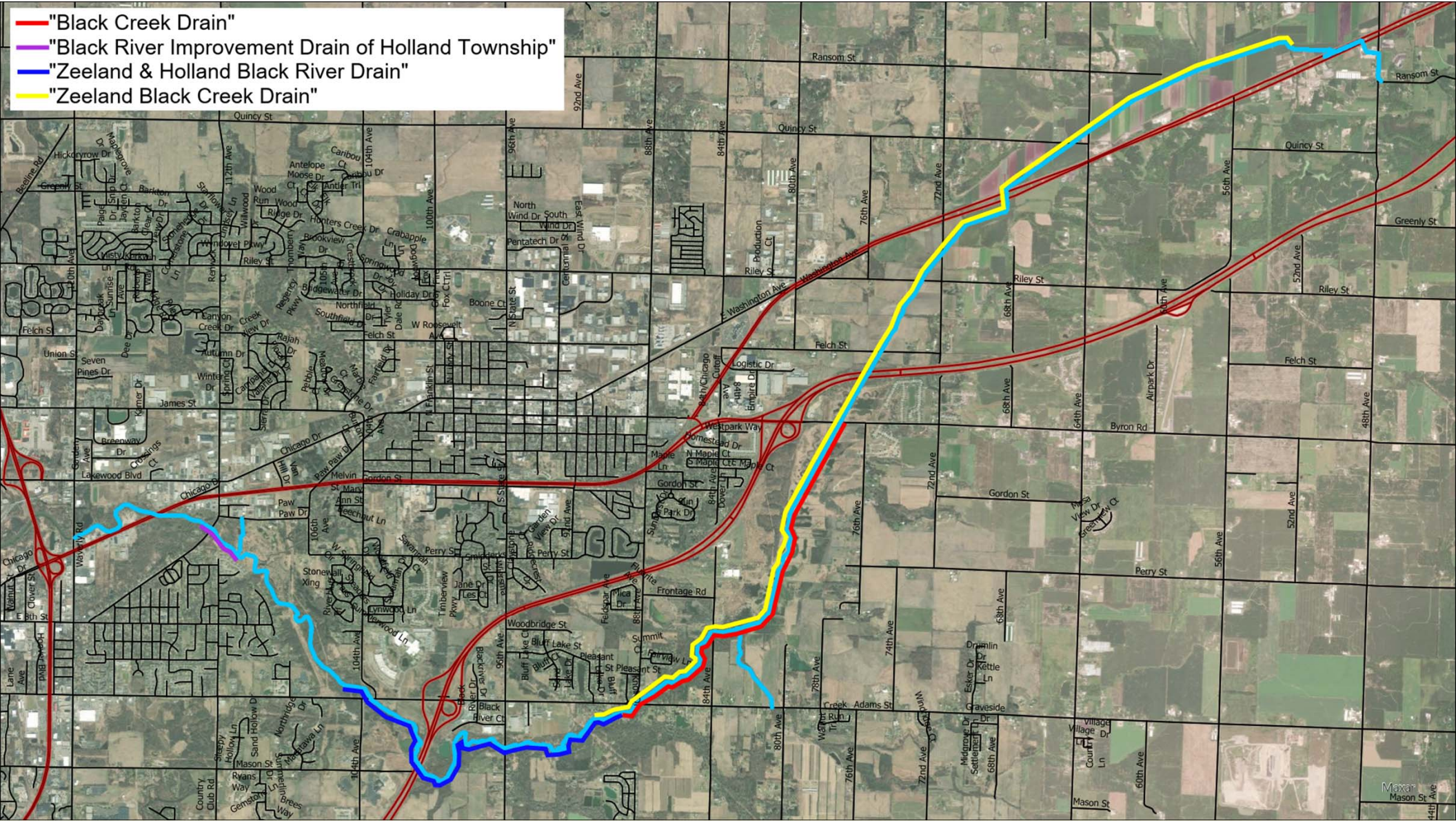
— "Black Creek Drain"
— "Black River Improvement Drain of Holland Township"



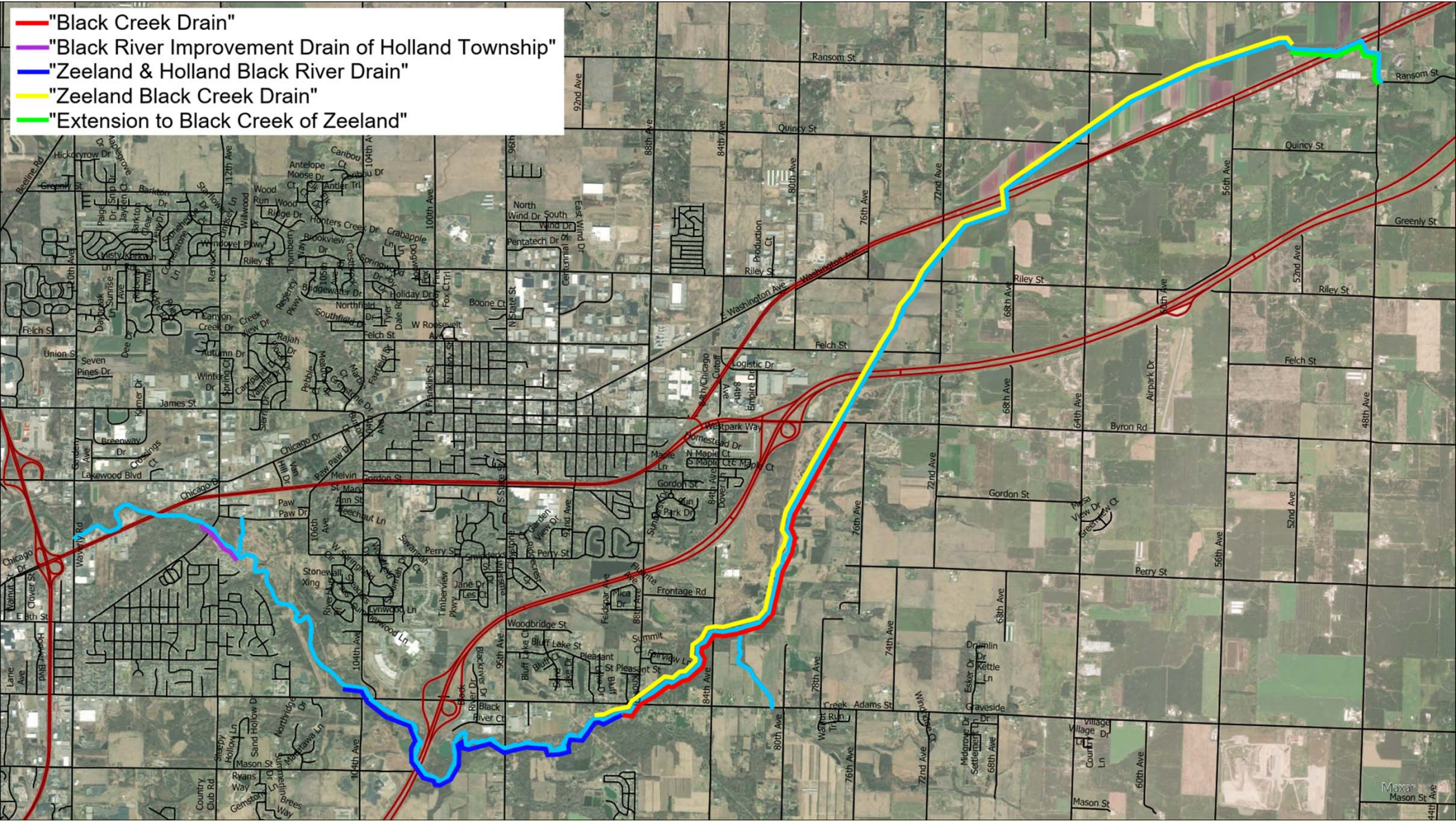
- "Black Creek Drain"
- "Black River Improvement Drain of Holland Township"
- "Zeeland & Holland Black River Drain"



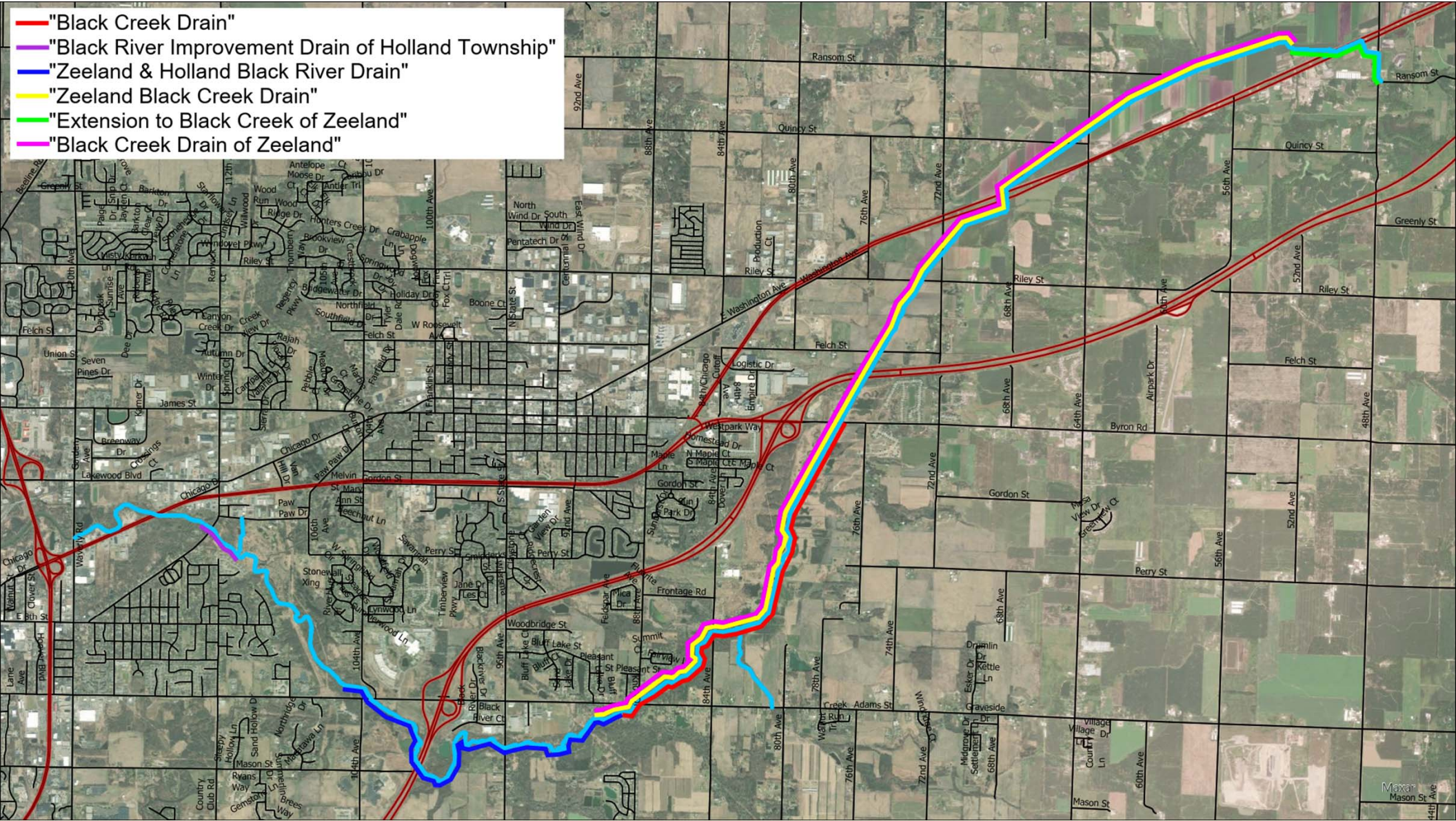
- "Black Creek Drain"
- "Black River Improvement Drain of Holland Township"
- "Zeeland & Holland Black River Drain"
- "Zeeland Black Creek Drain"



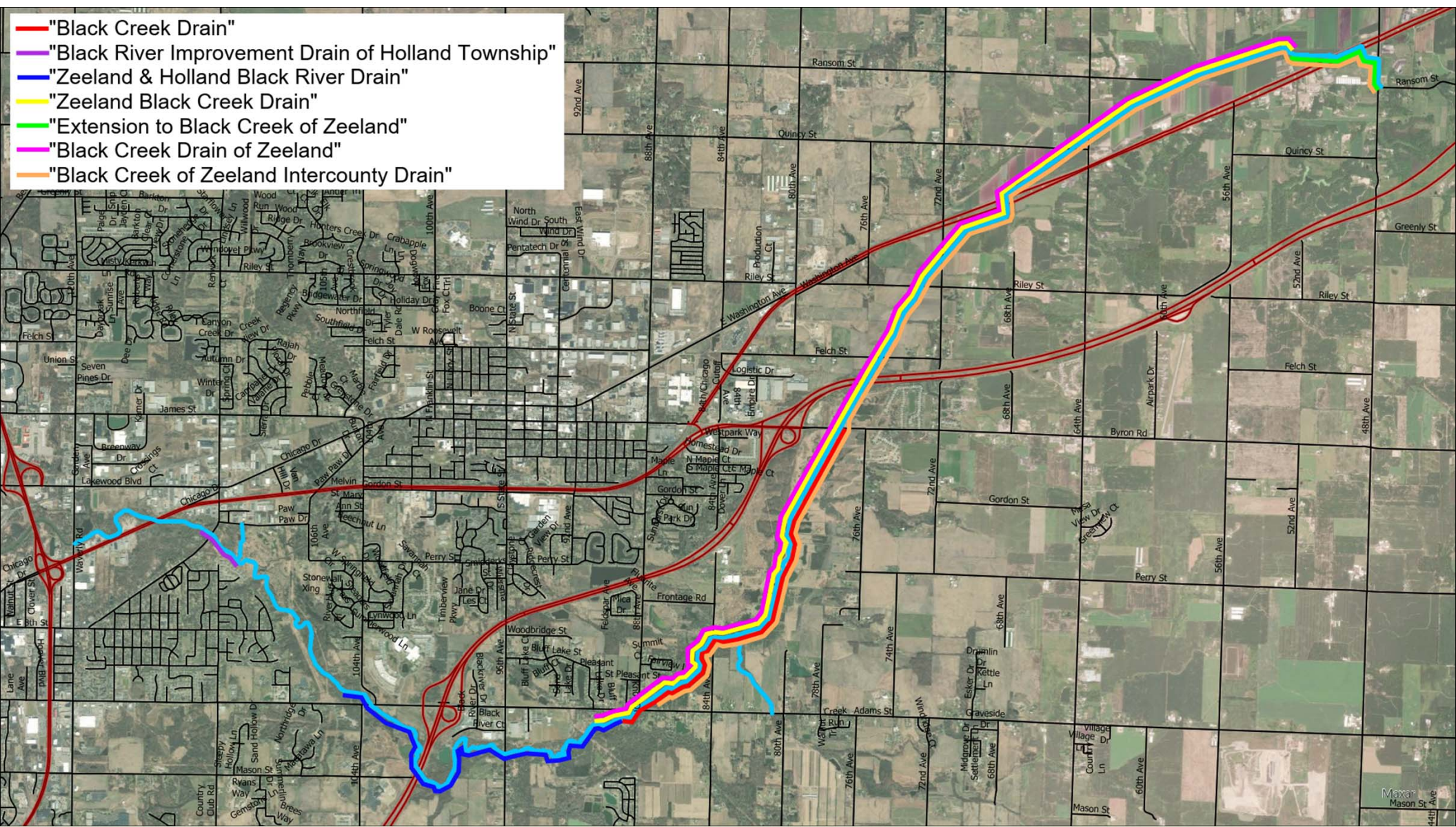
- "Black Creek Drain"
- "Black River Improvement Drain of Holland Township"
- "Zeeland & Holland Black River Drain"
- "Zeeland Black Creek Drain"
- "Extension to Black Creek of Zeeland"



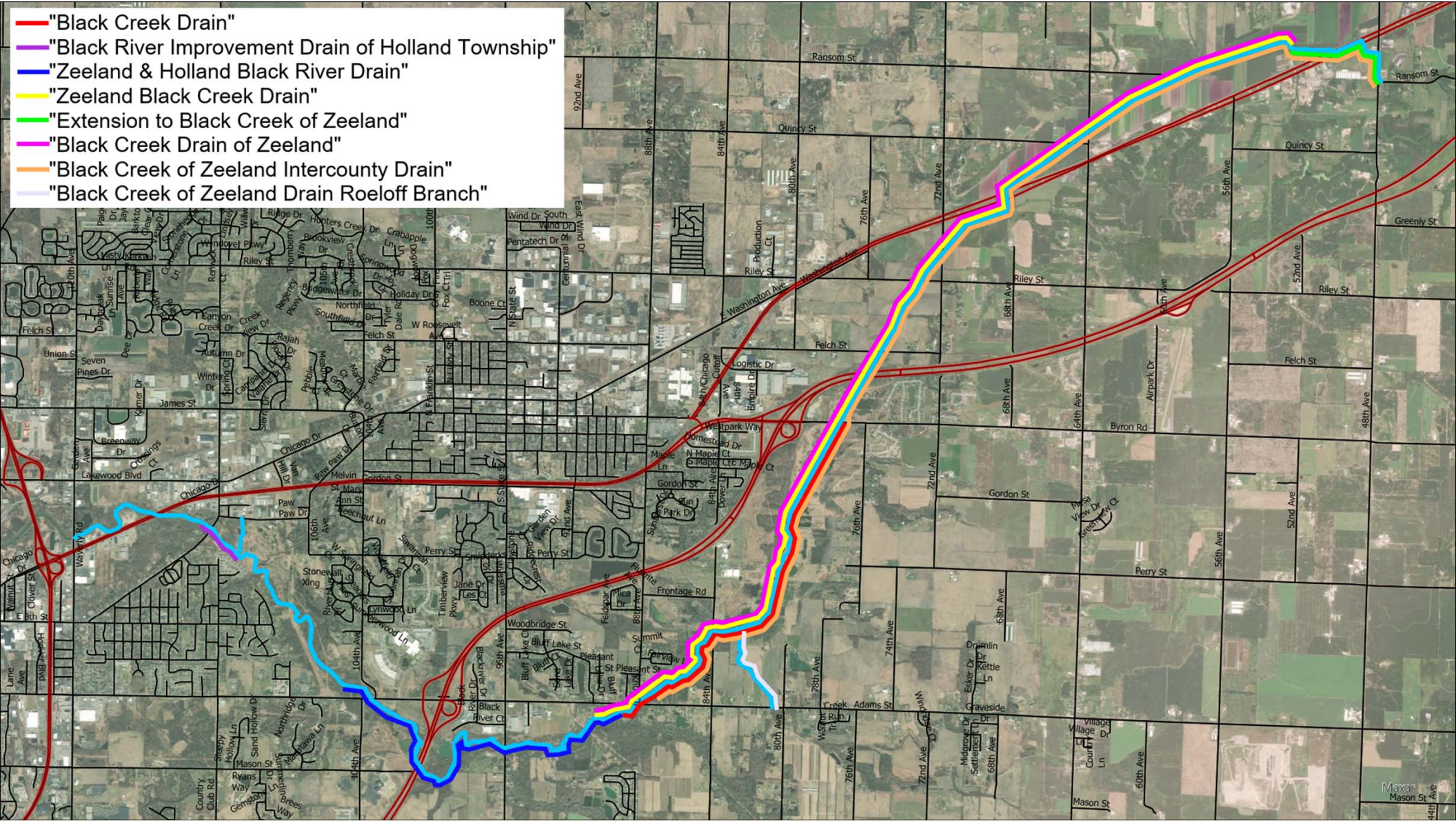
- "Black Creek Drain"**
- "Black River Improvement Drain of Holland Township"**
- "Zeeland & Holland Black River Drain"**
- "Zeeland Black Creek Drain"**
- "Extension to Black Creek of Zeeland"**
- "Black Creek Drain of Zeeland"**



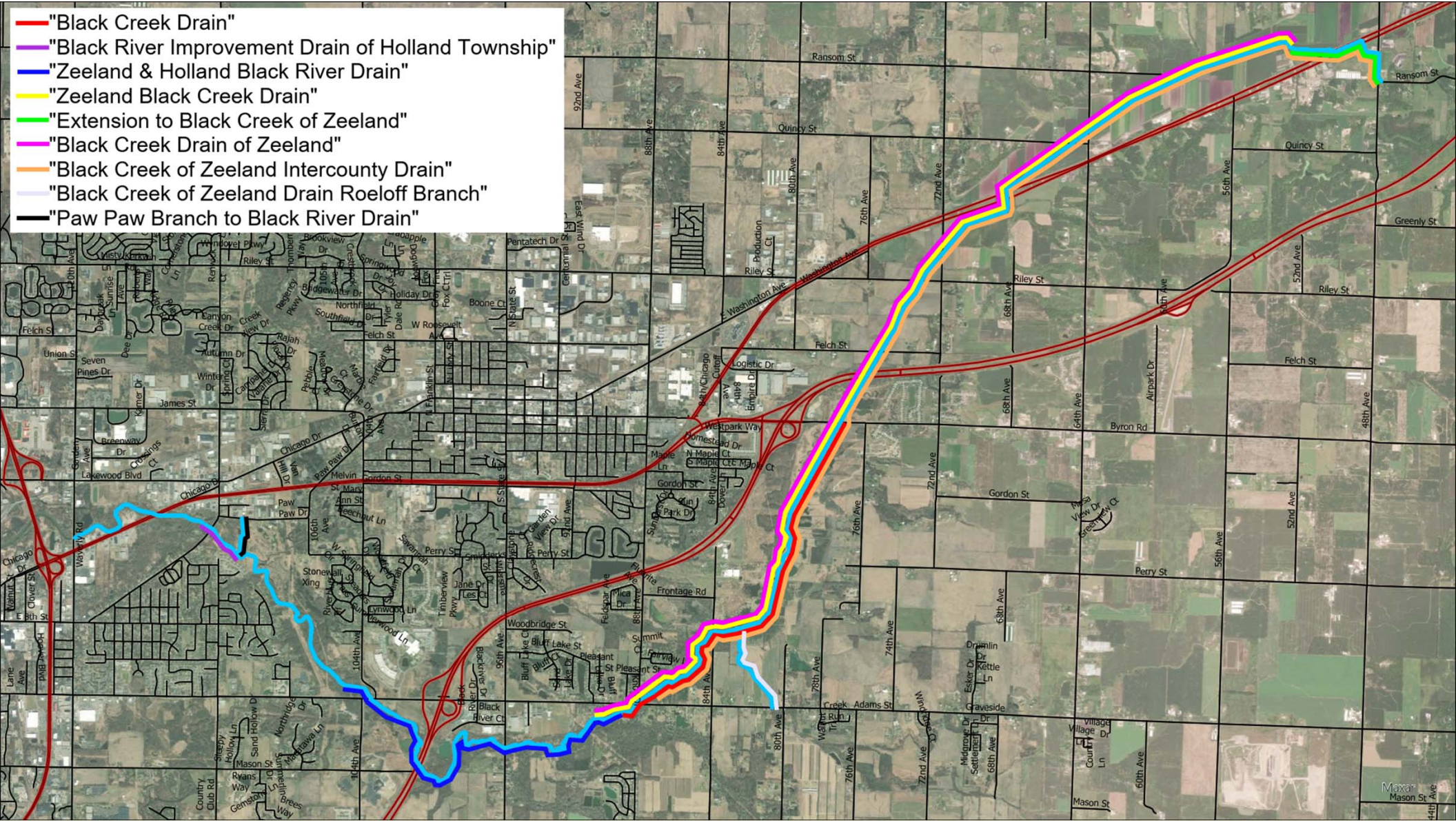
- "Black Creek Drain"
- "Black River Improvement Drain of Holland Township"
- "Zeeland & Holland Black River Drain"
- "Zeeland Black Creek Drain"
- "Extension to Black Creek of Zeeland"
- "Black Creek Drain of Zeeland"
- "Black Creek of Zeeland Intercounty Drain"

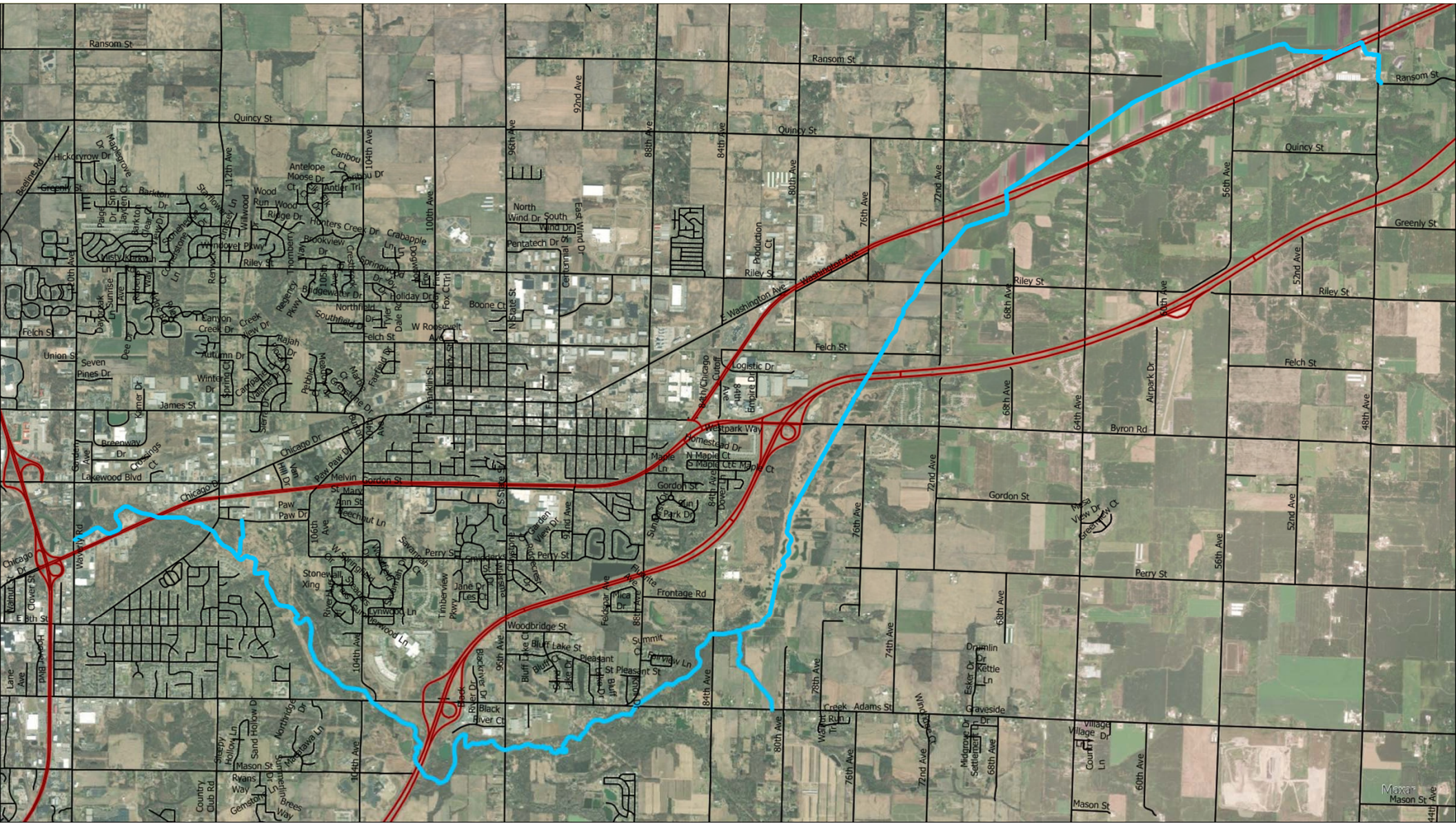


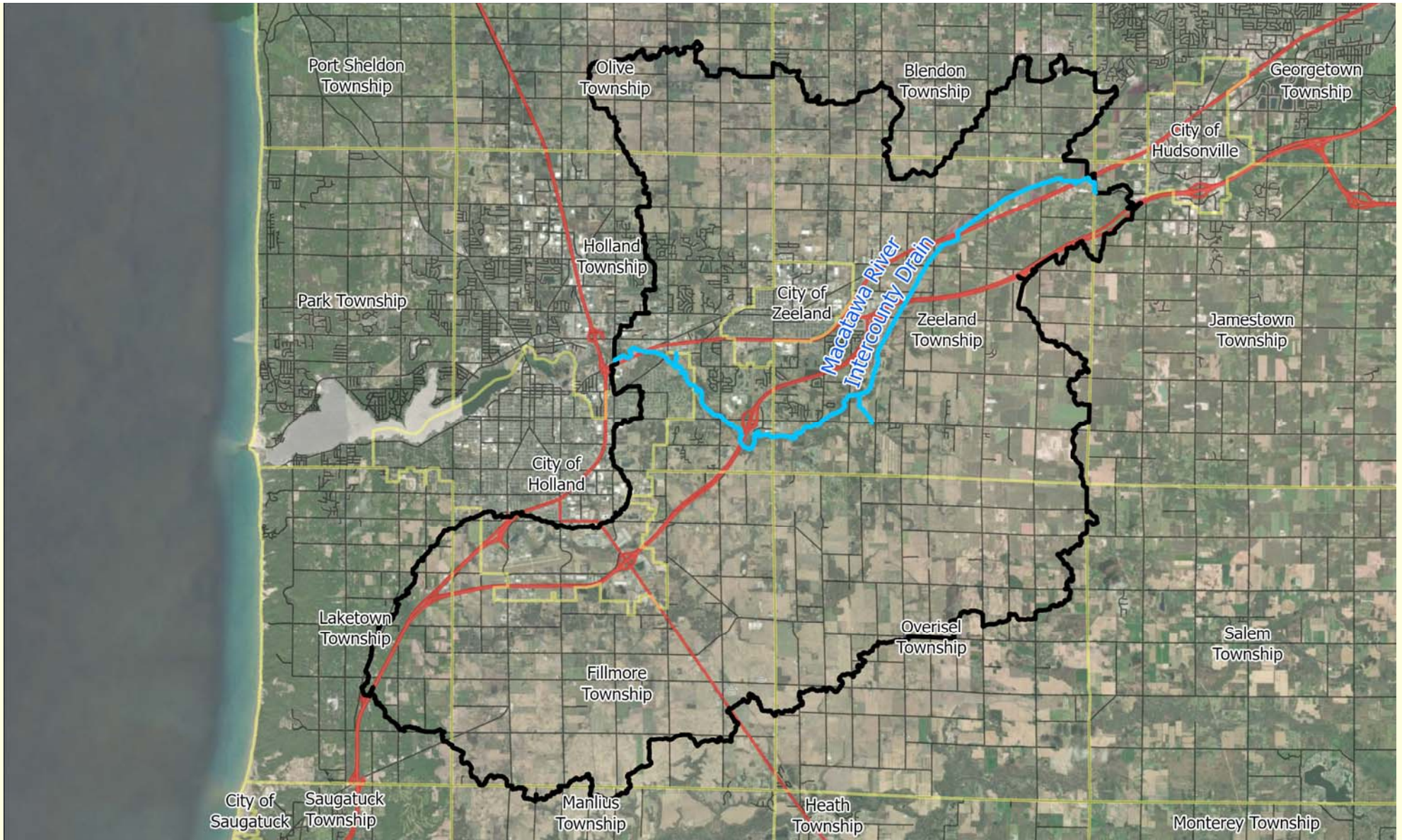
- "Black Creek Drain"
- "Black River Improvement Drain of Holland Township"
- "Zeeland & Holland Black River Drain"
- "Zeeland Black Creek Drain"
- "Extension to Black Creek of Zeeland"
- "Black Creek Drain of Zeeland"
- "Black Creek of Zeeland Intercounty Drain"
- "Black Creek of Zeeland Drain Roeloff Branch"



- "Black Creek Drain"
- "Black River Improvement Drain of Holland Township"
- "Zeeland & Holland Black River Drain"
- "Zeeland Black Creek Drain"
- "Extension to Black Creek of Zeeland"
- "Black Creek Drain of Zeeland"
- "Black Creek of Zeeland Intercounty Drain"
- "Black Creek of Zeeland Drain Roeloff Branch"
- "Paw Paw Branch to Black River Drain"







Watershed Information

- ~73,529 Acres/~115 Square Miles
 - Allegan 33,769 Acres
 - Ottawa 39,760 Acres
- ~16,200 Parcels
 - Allegan 2,900 Parcels
 - Ottawa 13,300 Parcels

Watershed Information

- Length: ~79,460 Feet / ~15 Miles (all in Ottawa)
- Watershed Land Uses
 - Agricultural
 - Forested/Recreational
 - Residential
 - Commercial/Industrial

Allegan Municipalities

- City of Holland
- Fillmore Township
- Laketown Township
- Manilus Township
- Overisel Township
- Salem Township
- Road Commission
- MDOT

Ottawa Municipalities

- Blendon Township
- City of Holland
- City of Zeeland
- Georgetown Township
- Holland Township
- Jamestown Township
- Olive Township
- Zeeland Township
- Road Commission
- MDOT

Goals

- Manage as a System
 - Ash Trees/Woody Debris
 - Reduce Erosion/Sedimentation
- Reduce Overlapping Drainage Districts
 - 8+ Drainage Districts
- Improve Opportunity For Partnerships
 - Grants/Project Clarity

Petition

- Holland Charter Township
 - May 20, 2021
 - Consolidation
 - Maintenance/Improvement
 - Name Change

Historical Maintenance

- Requested Annually Throughout Watercourse
- Typical Maintenance Activities
 - Woody Debris and Obstruction Removal
 - Soil Erosion and Sedimentation Control
 - Bank Stabilization

Add Photos From Chris

Adams Street – West Crossing

- Insert really bad photo from Chris of this crossing.

Adams Street – West Crossing



Bank Erosion



Adams Street – East Crossing



Procedure/Next Steps

■ Purpose of Hearing:

- To determine whether the petition is practicable

■ Next Steps If Found Practicable:

- The Drainage Board may retain a licensed professional surveyor or engineer
- Public hearing for necessity

Procedure/Next Steps

- **If Found NOT Practicable:**

- Proceedings end
- Drains/drainage districts continue to be treated separately

Questions



