

SEVEY DRAIN DRAINAGE DISTRICT

SECTIONS 26-29
T7N R14W
ALLENDALE TOWNSHIP, OTTAWA COUNTY
MICHIGAN

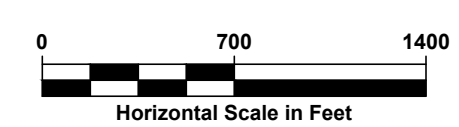
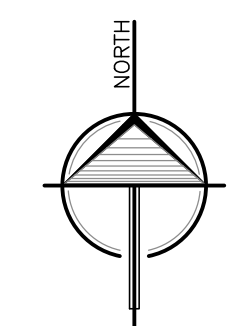


DRAINAGE DISTRICT INFORMATION:

HISTORIC DISTRICT:	969.8 ACRES
REVISED DISTRICT:	1034.7 ACRES
LANDS ADDED:	156.7 ACRES
LANDS REMOVED:	91.8 ACRES
DRAIN LENGTH SEVEY DRAIN	3.2 MILES

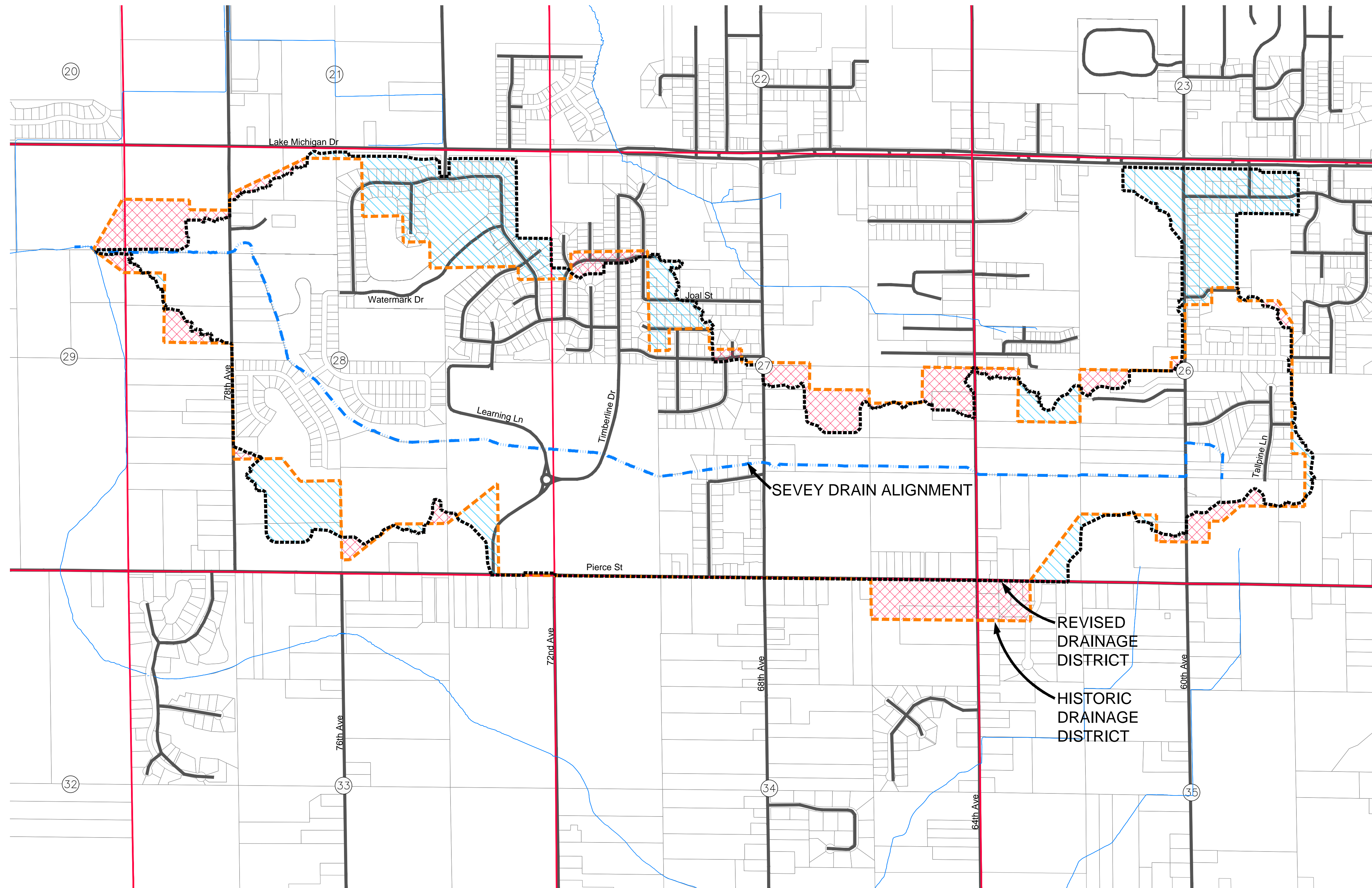
LEGEND

- LANDS REMOVED
- LANDS ADDED
- DRAIN ALIGNMENT (OPEN CHANNEL)
- DRAIN ALIGNMENT (ENCLOSED)
- HISTORIC DRAINAGE DISTRICT BOUNDARY
- REVISED DRAINAGE DISTRICT BOUNDARY
- CITY/VILLAGE LIMITS
- PARCEL LINES
- ROADS
- SECTION LINES
- TOWNSHIP LINE
- COUNTY LINE
- SECTION NUMBERS



LANDS ADDED/REMOVED MAP
EXHIBIT B-1

LRE <small>ENGINEERS & SURVEYORS</small>	2121 3 Mile Rd. NW Walker, MI 49544 Ph: 616-301-7888 www.LREMI.com	PROJECT#: 20-039 DRAWN BY: NDJ DATE: 3/15/2023 QAQC: AWS
--	---	---



Apr 22, 2023 - 2:34pm - C:\Projects\20-039 Sevey Drain\11\Map\B-1-B-1.dwg - R1-B-1.dwg - RST:c
 NDJ