



**County of Ottawa**  
*Office of the Water Resources Commissioner*

12220 Fillmore, Room 141, West Olive, MI 49460 Ph.(616) 994-4526 Email [waterresourcescommissioner@miottawa.org](mailto:waterresourcescommissioner@miottawa.org)

**Joe Bush**  
*Commissioner*

**Shaun McLarty**  
*Chief Deputy  
Commissioner*

## **NOTICE OF DRAIN MAINTENANCE**

May 7, 2024

Recently an inspection was made of the **Belle Cook Drain** which runs through or near your property. The result of the inspection was that maintenance including **sediment removal** and **debris removal is necessary**. During the next two weeks, contractors will be walking the drain/drainage easement to prepare their bid for the work. A follow-up letter will be sent out once we know who the contractor will be and their schedule.

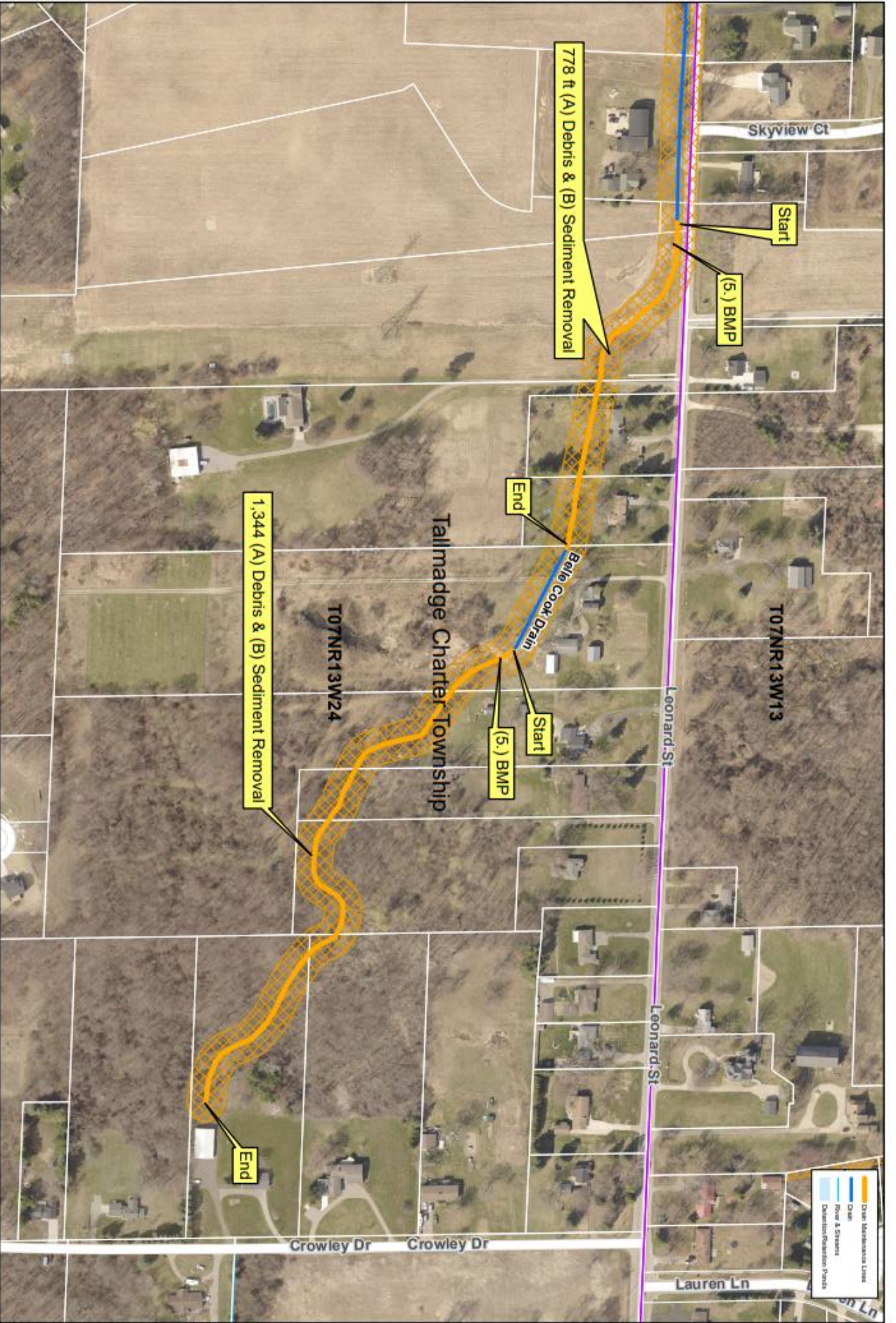
As soon as possible, please mark any and all structures in the drainage easement (invisible dog fences, underground sprinkling, sump lines/tile outlet, property corner pins, etc.). Contractors will not be held responsible for anything damaged that was unmarked.

Your cooperation is always appreciated in these matters. Should you have any questions, concerns, or input that you would like us to consider, feel free to contact us at (616) 994-4526 or email [waterresourcescommissioner@miottawa.org](mailto:waterresourcescommissioner@miottawa.org).

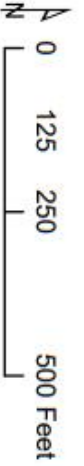
Thank You,

Emily Grasch  
Drain Inspector

Encl: Map of the proposed drain maintenance area (on the back of this letter)



- ▬ Drain Maintenance Lines
- ▬ Drain
- ▬ River & Streams
- ▬ Detention/Retention Ponds



**Ottawa County Water Resources**  
**Belle Cook Drain Clean Out**  
 BMP: (5.) Perimeter Sediment Control Measures

Section: Tallmadge Sec 24  
 Length: 2,122 ft Cleanout  
 Drain length: 7,930  
 Easement: 40  
 Soil Type: Silt clay loam

778 ft (A) Debris & (B) Sediment Removal

(5.) BMP

Start

End

Belle Cook Drain

(5.) BMP

Start

End

1,344 (A) Debris & (B) Sediment Removal

End

Tallmadge Charter Township

T07NR13W13

T07NR13W24

Skyview Ct

Leonard St

Leonard St

Crowley Dr

Crowley Dr

Lauren Ln