



**County of Ottawa**  
*Office of the Water Resources Commissioner*

**Joe Bush**  
*Commissioner*

**Shaun McLarty**  
*Chief Deputy  
Commissioner*

12220 Fillmore, Room 141, West Olive, MI 49460 Ph.(616) 994-4526 FAX (616) 994-4529 Email [waterresourcescommissioner@miottawa.org](mailto:waterresourcescommissioner@miottawa.org)

---

## **NOTICE OF DRAIN MAINTENANCE**

July 30, 2024

Recently an inspection was made of the **Brewer Farms Drain** which runs through or near your property. The result of the inspection was that maintenance including **sediment and debris removal are necessary**. During the next two weeks, contractors will be walking the drain/drainage easement to prepare their bid for the work. A follow-up letter will be sent out once we know who the contractor will be and their schedule.

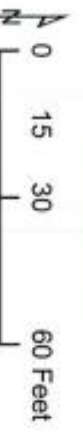
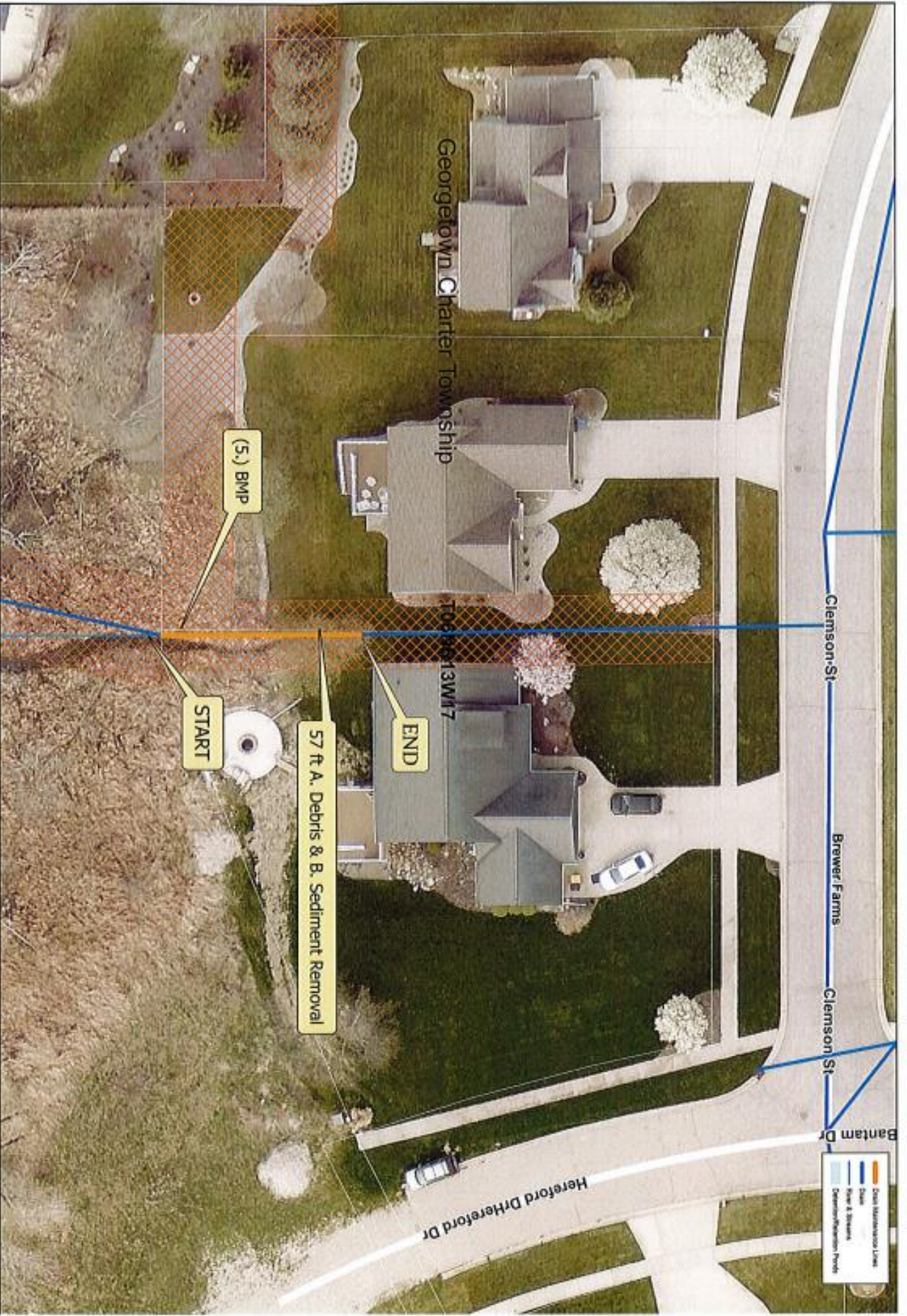
As soon as possible, please mark any and all structures in the drainage easement (invisible dog fences, underground sprinkling, sump lines/tile outlet, property corner pins, etc.). Contractors will not be held responsible for anything damaged that was unmarked.

Your cooperation is always appreciated in these matters. Should you have any questions, concerns, or input that you would like us to consider, feel free to contact us at (616) 994-4526 or email [waterresourcescommissioner@miottawa.org](mailto:waterresourcescommissioner@miottawa.org).

Thank You,

Emily Grasch  
Drain Inspector

Encl: Map of the proposed drain maintenance area (on the back of this letter)



**Ottawa County Water Resources**  
**Brewer Farms Drain Clean Out**  
 BPM: (5.) Perimeter Sediment Control Measures

Section: Georgetown Sec 17  
 Length: 57ft Cleanout  
 Drain length: 1.38 mi  
 Easement: 20ft  
 Soil Type: Silty Loam