



**County of Ottawa**  
*Office of the Water Resources Commissioner*

**Joe Bush**  
*Commissioner*

**Shaun McLarty**  
*Chief Deputy*

12220 Fillmore St, Room 141, West Olive, MI 49460

Ph. (616) 994-4530

FAX (616) 994-4529

Email

[waterresourcescommissioner@miottawa.org](mailto:waterresourcescommissioner@miottawa.org)

## **NOTICE OF DRAIN MAINTENANCE**

**January 8, 2025**

This notice is to inform you that a maintenance contract has been approved for the **No. 4 & 43** Drain. The contractor will be starting work within the two weeks. This work is weather dependent, and timelines may change.

The drain maintenance includes **sediment & debris removal**. Any debris removed from the drain will be cut into manageable pieces and stacked in piles within the drain easement. If you would like the debris removed or placed in specific areas, it is your responsibility to make arrangements with the contractor and pay the associated costs directly. The contractor will grade and seed, if necessary, in all disturbed areas created as a result of the maintenance performed.

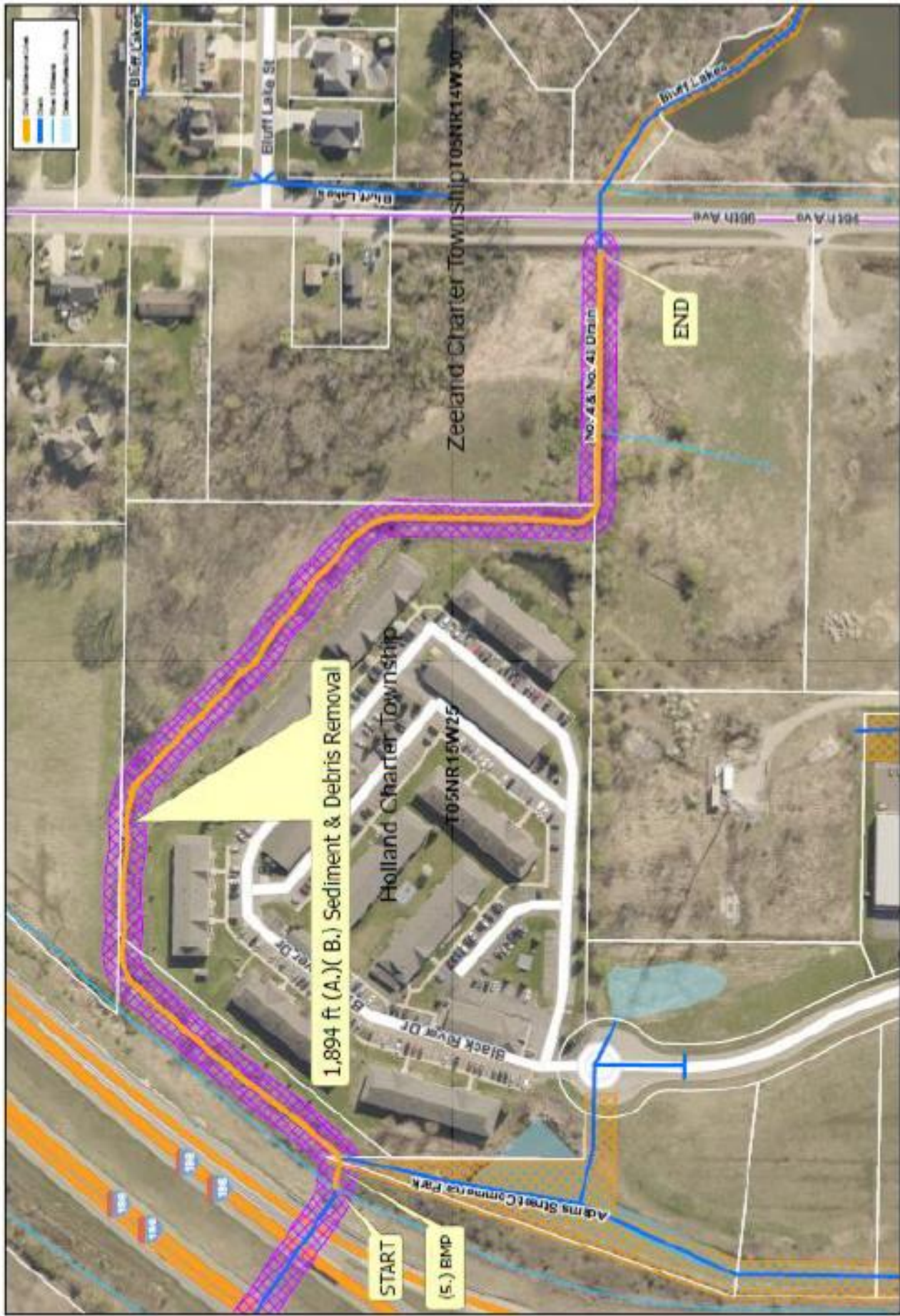
Please remove any fences, play sets or structures that are located within the drain easement as soon as possible. Also, make sure that any invisible dog fence, underground sprinkling, sump lines/tile outlet, property corner pins, etc. are marked. Care will be taken to avoid damage to anything within the drain easement; however, contractors will not be held responsible for something damaged that was not moved or marked.

Your cooperation is always appreciated in these matters. Should you have any questions, concerns, or input that you would like us to consider, feel free to contact us at 616-994-4526 or email [waterresourcescommissioner@miottawa.org](mailto:waterresourcescommissioner@miottawa.org).

Thank You,

Emily Grasch  
Drain Inspector

cc: Midwest Farm Drainage & Excavating LLC (616) 862-1024  
Holland Charter Township



- Drain Maintenance Area
- Drain
- Flow Direction
- Drain/Inlet/Outlet Point

1,894 ft (A.) (B.) Sediment & Debris Removal

START

(5.) BMP

END

Section: Holland Twp. 25  
 Length: 1,894 ft Clearcut  
 Drain origin: 9,321 ft  
 Elevation: 83  
 Box Type: 400ft

**Ottawa County Water Resources  
 No 4 and No 43 Drain Maintenance**

