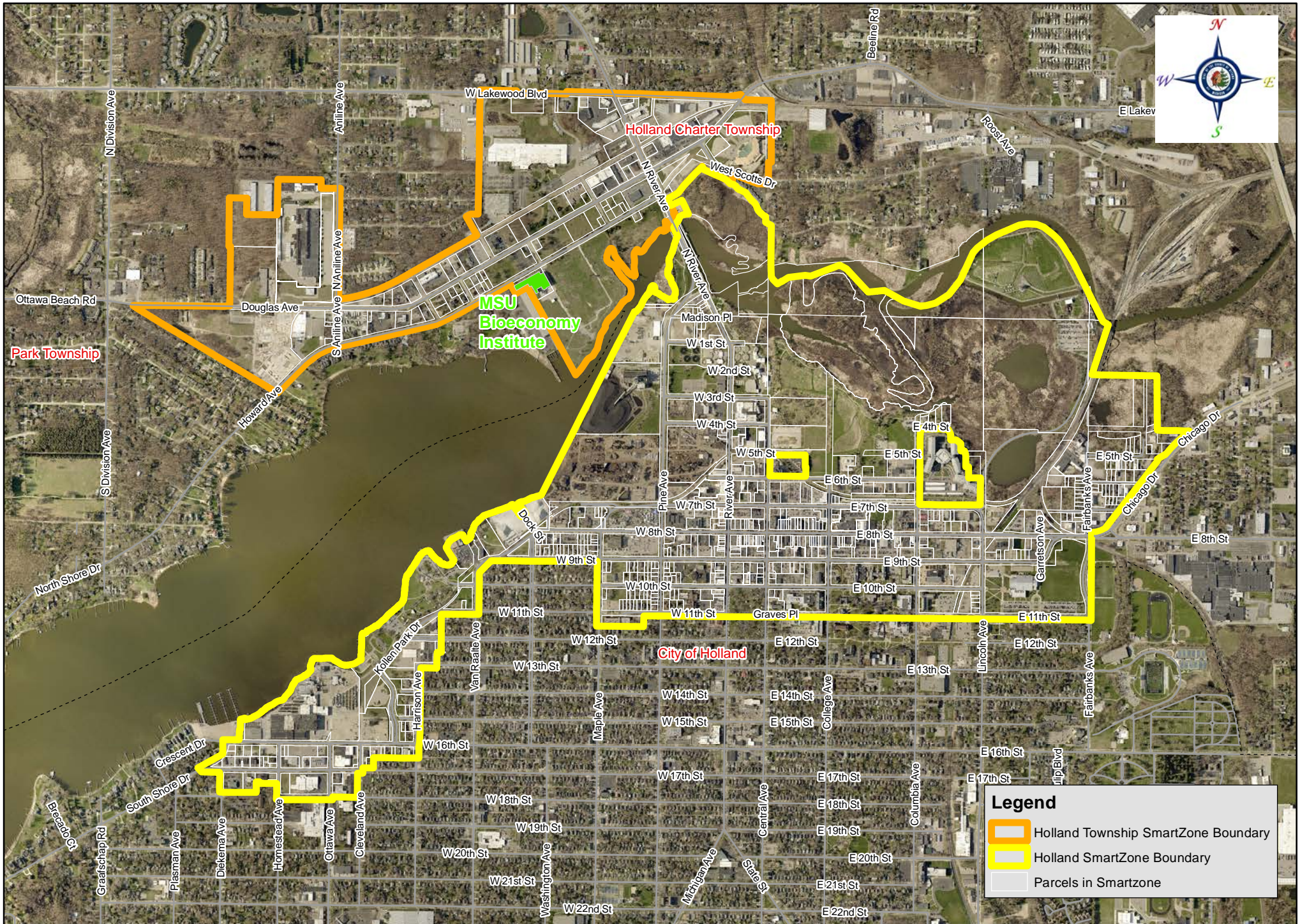


Holland SmartZone



Legend

- Holland Township SmartZone Boundary
- Holland SmartZone Boundary
- Parcels in Smartzone

EXUBERANT PLUS BOUNDARY

SmartZone Tax Capture (1% Increase in Normal Growth Rate due to SmartZone)

Collect 50% of Local Operating Millages, School Millages, and Specially Approved Millages --- Excludes All Debt Millages

Taxing Jurisdiction and Tax Item	Amount of Tax Mills	Tax Mills Captured by SmartZone	Base Year of SmartZone		2016			2017			2018			2019			2020		
			Taxable Value (2015)	Tax Revenue (2015)	Estimated Taxable Value (2016)	Estimated Increase in Taxable Value (2015-2016)	Estimated Taxes Captured by SmartZone (2016)	Estimated Taxable Value (2017)	Estimated Increase in Taxable Value (2015-2017)	Estimated Taxes Captured by SmartZone (2017)	Estimated Taxable Value (2018)	Estimated Increase in Taxable Value (2015-2018)	Estimated Taxes Captured by SmartZone (2018)	Estimated Taxable Value (2019)	Estimated Increase in Taxable Value (2015-2019)	Estimated Taxes Captured by SmartZone (2019)	Estimated Taxable Value (2020)	Estimated Increase in Taxable Value (2015-2020)	Estimated Taxes Captured by SmartZone (2020)
			Ottawa County Operating	3.6000	1.8000	\$87,863,406	\$157,769	\$89,558,318	\$1,694,912	\$3,046	\$91,286,107	\$3,422,701	\$6,151	\$93,047,412	\$5,184,006	\$9,316	\$94,842,886	\$6,979,480	\$12,543
Ottawa County E-911	0.4400	0.2200	\$87,863,406	\$19,283	\$89,558,318	\$1,694,912	\$372	\$91,286,107	\$3,422,701	\$752	\$93,047,412	\$5,184,006	\$1,139	\$94,842,886	\$6,979,480	\$1,533	\$96,673,194	\$8,809,788	\$1,935
Ottawa County Parks	0.3165	0.1583	\$87,863,406	\$13,875	\$89,558,318	\$1,694,912	\$268	\$91,286,107	\$3,422,701	\$541	\$93,047,412	\$5,184,006	\$819	\$94,842,886	\$6,979,480	\$1,103	\$96,673,194	\$8,809,788	\$1,392
Ottawa County Roads	0.5000	0.2500	\$87,863,406	\$21,912	\$89,558,318	\$1,694,912	\$423	\$91,286,107	\$3,422,701	\$854	\$93,047,412	\$5,184,006	\$1,294	\$94,842,886	\$6,979,480	\$1,742	\$96,673,194	\$8,809,788	\$2,199
Ottawa County Subtotal	4.8565	2.4283	\$87,863,406	\$190,926	\$89,558,318	\$1,694,912	\$4,109	\$91,286,107	\$3,422,701	\$8,298	\$93,047,412	\$5,184,006	\$12,568	\$94,842,886	\$6,979,480	\$16,922	\$96,673,194	\$8,809,788	\$21,359
Holland City Operating	9.5000	4.7500	\$67,707,843	\$321,603	\$69,062,000	\$1,354,157	\$6,432	\$70,443,240	\$2,735,397	\$12,993	\$71,852,105	\$4,144,262	\$19,685	\$73,289,147	\$5,581,304	\$26,511	\$74,754,930	\$7,047,087	\$33,474
Holland City Street Improvements	1.4268	0.7134	\$67,707,843	\$48,301	\$69,062,000	\$1,354,157	\$966	\$70,443,240	\$2,735,397	\$1,951	\$71,852,105	\$4,144,262	\$2,956	\$73,289,147	\$5,581,304	\$3,982	\$74,754,930	\$7,047,087	\$5,027
Holland City Sidewalk Improvements	0.0500	0.0250	\$67,707,843	\$1,693	\$69,062,000	\$1,354,157	\$34	\$70,443,240	\$2,735,397	\$68	\$71,852,105	\$4,144,262	\$104	\$73,289,147	\$5,581,304	\$140	\$74,754,930	\$7,047,087	\$176
Holland City Municipal Capital Improvements	0.3180	0.1590	\$67,707,843	\$10,765	\$69,062,000	\$1,354,157	\$215	\$70,443,240	\$2,735,397	\$435	\$71,852,105	\$4,144,262	\$659	\$73,289,147	\$5,581,304	\$887	\$74,754,930	\$7,047,087	\$1,120
Holland City Fire Station Reinvestment	0.2585	0.1293	\$67,707,843	\$8,754	\$69,062,000	\$1,354,157	\$175	\$70,443,240	\$2,735,397	\$354	\$71,852,105	\$4,144,262	\$536	\$73,289,147	\$5,581,304	\$722	\$74,754,930	\$7,047,087	\$911
Holland City Debt	2.2198	0.0000	\$67,707,843	\$0	\$69,062,000	\$1,354,157	\$0	\$70,443,240	\$2,735,397	\$0	\$71,852,105	\$4,144,262	\$0	\$73,289,147	\$5,581,304	\$0	\$74,754,930	\$7,047,087	\$0
Holland City Subtotal	13.7731	5.7767	\$67,707,843	\$391,117	\$69,062,000	\$1,354,157	\$7,822	\$70,443,240	\$2,735,397	\$15,801	\$71,852,105	\$4,144,262	\$23,939	\$73,289,147	\$5,581,304	\$32,242	\$74,754,930	\$7,047,087	\$40,709
Holland Township Operating	3.4728	1.7364	\$20,155,563	\$34,630	\$20,496,318	\$340,755	\$587	\$20,842,867	\$687,304	\$1,184	\$21,195,308	\$1,039,745	\$1,791	\$21,553,739	\$1,398,176	\$2,409	\$21,918,264	\$1,762,701	\$3,037
Holland Township EMS and Police Services	1.0000	0.5000	\$20,155,563	\$9,972	\$20,496,318	\$340,755	\$169	\$20,842,867	\$687,304	\$341	\$21,195,308	\$1,039,745	\$516	\$21,553,739	\$1,398,176	\$694	\$21,918,264	\$1,762,701	\$874
Holland Township Non-Motorized Path	0.3800	0.1900	\$20,155,563	\$3,789	\$20,496,318	\$340,755	\$64	\$20,842,867	\$687,304	\$130	\$21,195,308	\$1,039,745	\$196	\$21,553,739	\$1,398,176	\$264	\$21,918,264	\$1,762,701	\$332
Holland Township Subtotal	4.8528	2.4264	\$20,155,563	\$48,390	\$20,496,318	\$340,755	\$820	\$20,842,867	\$687,304	\$1,655	\$21,195,308	\$1,039,745	\$2,503	\$21,553,739	\$1,398,176	\$3,366	\$21,918,264	\$1,762,701	\$4,244
Herrick District Library Operating	1.1000	0.5500	\$87,863,406	\$48,207	\$89,558,318	\$1,694,912	\$931	\$91,286,107	\$3,422,701	\$1,879	\$93,047,412	\$5,184,006	\$2,847	\$94,842,886	\$6,979,480	\$3,833	\$96,673,194	\$8,809,788	\$4,838
Herrick District Library Debt	0.1362	0.0000	\$87,863,406	\$0	\$89,558,318	\$1,694,912	\$0	\$91,286,107	\$3,422,701	\$0	\$93,047,412	\$5,184,006	\$0	\$94,842,886	\$6,979,480	\$0	\$96,673,194	\$8,809,788	\$0
Herrick District Library Subtotal	1.2362	0.5500	\$87,863,406	\$48,207	\$89,558,318	\$1,694,912	\$931	\$91,286,107	\$3,422,701	\$1,879	\$93,047,412	\$5,184,006	\$2,847	\$94,842,886	\$6,979,480	\$3,833	\$96,673,194	\$8,809,788	\$4,838
Max Transport Operating	0.3989	0.1995	\$87,863,406	\$17,486	\$89,558,318	\$1,694,912	\$338	\$91,286,107	\$3,422,701	\$682	\$93,047,412	\$5,184,006	\$1,033	\$94,842,886	\$6,979,480	\$1,390	\$96,673,194	\$8,809,788	\$1,755
West Michigan Airport	0.0992	0.0496	\$67,707,843	\$3,358	\$69,062,000	\$1,354,157	\$67	\$70,443,240	\$2,735,397	\$136	\$71,852,105	\$4,144,262	\$206	\$73,289,147	\$5,581,304	\$277	\$74,754,930	\$7,047,087	\$350
Holland Swim Pool Operating	0.9875	0.4938	\$67,707,843	\$33,433	\$69,062,000	\$1,354,157	\$669	\$70,443,240	\$2,735,397	\$1,351	\$71,852,105	\$4,144,262	\$2,046	\$73,289,147	\$5,581,304	\$2,756	\$74,754,930	\$7,047,087	\$3,480
Holland Swim Pool Debt	0.6800	0.0000	\$67,707,843	\$0	\$69,062,000	\$1,354,157	\$0	\$70,443,240	\$2,735,397	\$0	\$71,852,105	\$4,144,262	\$0	\$73,289,147	\$5,581,304	\$0	\$74,754,930	\$7,047,087	\$0
Holland Swim Pool Subtotal	1.6675	0.4938	\$67,707,843	\$33,433	\$69,062,000	\$1,354,157	\$669	\$70,443,240	\$2,735,397	\$1,351	\$71,852,105	\$4,144,262	\$2,046	\$73,289,147	\$5,581,304	\$2,756	\$74,754,930	\$7,047,087	\$3,480
Holland DDA Operating	1.6034	0.8017	\$62,705,238	\$50,271	\$63,959,343	\$1,254,105	\$1,005	\$65,238,530	\$2,533,292	\$2,031	\$66,543,300	\$3,838,062	\$3,077	\$67,874,166	\$5,168,928	\$4,144	\$69,231,650	\$6,526,412	\$5,232
Ottawa Intermediate School District Operating	5.5234	2.7617	\$87,863,406	\$242,061	\$89,558,318	\$1,694,912	\$4,673	\$91,286,107	\$3,422,701	\$9,437	\$93,047,412	\$5,184,006	\$14,294	\$94,842,886	\$6,979,480	\$19,245	\$96,673,194	\$8,809,788	\$24,292
Michigan State Education Operating	6.0000	3.0000	\$87,863,406	\$262,948	\$89,558,318	\$1,694,912	\$5,077	\$91,286,107	\$3,422,701	\$10,252	\$93,047,412	\$5,184,006	\$15,527	\$94,842,886	\$6,979,480	\$20,906	\$96,673,194	\$8,809,788	\$26,388
Holland School District Operating (Non-PRE) ¹	18.0000	9.0000	\$64,579,762	\$581,201	\$65,871,357	\$1,291,595	\$11,624	\$67,188,785	\$1,317,428	\$11,857	\$68,532,560	\$3,952,798	\$35,574	\$69,903,212	\$5,323,450	\$47,911	\$71,301,276	\$6,721,514	\$60,494
Holland School District Building and Site	0.7422	0.3711	\$67,707,843	\$25,126	\$69,062,000	\$1,354,157	\$503	\$70,443,240	\$1,381,240	\$513	\$71,852,105	\$4,144,262	\$1,538	\$73,289,147	\$5,581,304	\$2,071	\$74,754,930	\$7,047,087	\$2,615
Holland School District Debt	6.6200	0.0000	\$67,707,843	\$0	\$69,062,000	\$1,354,157	\$0	\$70,443,240	\$1,381,240	\$0	\$71,852,105	\$4,144,262	\$0	\$73,289,147	\$5,581,304	\$0	\$74,754,930	\$7,047,087	\$0
Holland School District Subtotal**	25.3622	9.3711	\$67,707,843	\$606,326	\$69,062,000	\$1,354,157	\$12,127	\$70,443,240	\$1,381,240	\$12,369	\$71,852,105	\$4,144,262	\$37,112	\$73,289,147	\$5,581,304	\$49,982	\$74,754,930	\$7,047,087	\$63,109
West Ottawa School District Operating (Non-PRE) ¹	18.0000	9.0000	\$20,025,707	\$178,321	\$20,364,255	\$338,548	\$3,023	\$20,708,559	\$344,304	\$3,074	\$21,058,716	\$1,033,009	\$9,224	\$21,414,825	\$1,389,118	\$12,404	\$21,776,988	\$1,751,281	\$15,637
West Ottawa School District Building and Site	0.2997	0.1499	\$20,155,563	\$2,989	\$20,496,318	\$340,755	\$51	\$20,842,867	\$346,549	\$52	\$21,195,308	\$1,039,745	\$155	\$21,553,739	\$1,398,176	\$208	\$21,918,264	\$1,762,701	\$262
West Ottawa School District Debt	7.7500	0.0000	\$20,155,563	\$0	\$20,496,318	\$340,755	\$0	\$20,842,867	\$346,549	\$0	\$21,195,308	\$1,039,745	\$0	\$21,553,739	\$1,398,176	\$0	\$21,918,264	\$1,762,701	\$0
West Ottawa School District Subtotal**	26.0497	9.1499	\$20,155,563	\$181,310	\$20,496,318	\$340,755	\$3,074	\$20,842,867	\$346,549	\$3,126	\$21,195,308	\$1,039,745	\$9,379	\$21,553,739	\$1,398,176	\$12,612	\$21,918,264	\$1,762,701	\$15,900
Total Taxes Captured							\$40,712			\$67,017			\$124,531		\$167,674				\$211,654

** This shows what is collected from school districts. However, there is no loss to school districts due to the SmartZone because they are reimbursed by the State School Aid Fund.

¹ PRE parcels are not taxed on the School District Operating tax items

Notes:

Based on a 1.7% growth rate in Holland Township and a 2.0% growth rate in Holland City

IFT parcels only pay 50% of the tax mills until their exemption expires; the SmartZone only captures 50% of that reduced payment from IFT parcels. Holland Township has two IFT parcels that expire in 2020 and a third IFT parcel that expires in 2021. Holland City has two IFT parcels, one that will expire in 2018 and one that will expire in 2023

Holland City has several parcels in Brownfield TIFs. It is assumed that the TIFs will not be renewed when they expire and the tax dollars associated with the Brownfield parcels will be added back to the tax roll when they expire

EXUBERANT PLUS BOUNDARY

SmartZone Tax Capture (1% Increase in Normal Growth Rate due to SmartZone)

Collect 50% of Local Operating Millages, School Millages, and Specially Approved Millages --- Excludes All Debt Millages

Taxing Jurisdiction and Tax Item	Amount of Tax Mills	Tax Mills Captured by SmartZone	Base Year of SmartZone		2021			2022			2023			2024			2025		
			Taxable Value (2015)	Tax Revenue (2015)	Estimated Taxable Value (2021)	Estimated Increase in Taxable Value (2015-2021)	Estimated Taxes Captured by SmartZone (2021)	Estimated Taxable Value (2022)	Estimated Increase in Taxable Value (2015-2022)	Estimated Taxes Captured by SmartZone (2022)	Estimated Taxable Value (2023)	Estimated Increase in Taxable Value (2015-2023)	Estimated Taxes Captured by SmartZone (2023)	Estimated Taxable Value (2024)	Estimated Increase in Taxable Value (2015-2024)	Estimated Taxes Captured by SmartZone (2024)	Estimated Taxable Value (2025)	Estimated Increase in Taxable Value (2015-2025)	Estimated Taxes Captured by SmartZone (2025)
			Ottawa County Operating	3.6000	1.8000	\$87,863,406	\$157,769	\$98,539,014	\$10,675,608	\$19,216	\$100,441,039	\$12,577,633	\$22,640	\$109,807,608	\$21,944,202	\$39,500	\$111,934,606	\$24,071,200	\$43,328
Ottawa County E-911	0.4400	0.2200	\$87,863,406	\$19,283	\$98,539,014	\$10,675,608	\$2,349	\$100,441,039	\$12,577,633	\$2,767	\$109,807,608	\$21,944,202	\$4,828	\$111,934,606	\$24,071,200	\$5,296	\$114,134,870	\$26,271,464	\$5,780
Ottawa County Parks	0.3165	0.1583	\$87,863,406	\$13,875	\$98,539,014	\$10,675,608	\$1,690	\$100,441,039	\$12,577,633	\$1,991	\$109,807,608	\$21,944,202	\$3,474	\$111,934,606	\$24,071,200	\$3,810	\$114,134,870	\$26,271,464	\$4,159
Ottawa County Roads	0.5000	0.2500	\$87,863,406	\$21,912	\$98,539,014	\$10,675,608	\$2,669	\$100,441,039	\$12,577,633	\$3,144	\$109,807,608	\$21,944,202	\$5,486	\$111,934,606	\$24,071,200	\$6,018	\$114,134,870	\$26,271,464	\$6,568
Ottawa County Subtotal	4.8565	2.4283	\$87,863,406	\$190,926	\$98,539,014	\$10,675,608	\$25,924	\$100,441,039	\$12,577,633	\$30,542	\$109,807,608	\$21,944,202	\$53,287	\$111,934,606	\$24,071,200	\$58,452	\$114,134,870	\$26,271,464	\$63,795
Holland City Operating	9.5000	4.7500	\$67,707,843	\$321,603	\$76,250,029	\$8,542,186	\$40,575	\$77,775,029	\$10,067,186	\$47,819	\$86,756,276	\$19,048,433	\$90,480	\$88,491,401	\$20,783,558	\$98,722	\$90,293,132	\$22,585,289	\$107,280
Holland City Street Improvements	1.4268	0.7134	\$67,707,843	\$48,301	\$76,250,029	\$8,542,186	\$6,094	\$77,775,029	\$10,067,186	\$7,182	\$86,756,276	\$19,048,433	\$13,589	\$88,491,401	\$20,783,558	\$14,827	\$90,293,132	\$22,585,289	\$16,112
Holland City Sidewalk Improvements	0.0500	0.0250	\$67,707,843	\$1,693	\$76,250,029	\$8,542,186	\$214	\$77,775,029	\$10,067,186	\$252	\$86,756,276	\$19,048,433	\$476	\$88,491,401	\$20,783,558	\$520	\$90,293,132	\$22,585,289	\$565
Holland City Municipal Capital Improvements	0.3180	0.1590	\$67,707,843	\$10,765	\$76,250,029	\$8,542,186	\$1,358	\$77,775,029	\$10,067,186	\$1,601	\$86,756,276	\$19,048,433	\$3,029	\$88,491,401	\$20,783,558	\$3,305	\$90,293,132	\$22,585,289	\$3,591
Holland City Fire Station Reinvestment	0.2585	0.1293	\$67,707,843	\$8,754	\$76,250,029	\$8,542,186	\$1,105	\$77,775,029	\$10,067,186	\$1,302	\$86,756,276	\$19,048,433	\$2,463	\$88,491,401	\$20,783,558	\$2,687	\$90,293,132	\$22,585,289	\$2,920
Holland City Debt	2.2198	0.0000	\$67,707,843	\$0	\$76,250,029	\$8,542,186	\$0	\$77,775,029	\$10,067,186	\$0	\$86,756,276	\$19,048,433	\$0	\$88,491,401	\$20,783,558	\$0	\$90,293,132	\$22,585,289	\$0
Holland City Subtotal	13.7731	5.7767	\$67,707,843	\$391,117	\$76,250,029	\$8,542,186	\$49,346	\$77,775,029	\$10,067,186	\$58,155	\$86,756,276	\$19,048,433	\$110,037	\$88,491,401	\$20,783,558	\$120,060	\$90,293,132	\$22,585,289	\$130,468
Holland Township Operating	3.4728	1.7364	\$20,155,563	\$34,630	\$22,288,985	\$2,133,422	\$3,704	\$22,666,009	\$2,510,446	\$4,359	\$23,051,332	\$2,895,769	\$5,028	\$23,443,204	\$3,287,641	\$5,709	\$23,841,739	\$3,686,176	\$6,401
Holland Township EMS and Police Services	1.0000	0.5000	\$20,155,563	\$9,972	\$22,288,985	\$2,133,422	\$1,067	\$22,666,009	\$2,510,446	\$1,255	\$23,051,332	\$2,895,769	\$1,448	\$23,443,204	\$3,287,641	\$1,644	\$23,841,739	\$3,686,176	\$1,843
Holland Township Non-Motorized Path	0.3800	0.1900	\$20,155,563	\$3,789	\$22,288,985	\$2,133,422	\$405	\$22,666,009	\$2,510,446	\$477	\$23,051,332	\$2,895,769	\$550	\$23,443,204	\$3,287,641	\$625	\$23,841,739	\$3,686,176	\$700
Holland Township Subtotal	4.8528	2.4264	\$20,155,563	\$48,390	\$22,288,985	\$2,133,422	\$5,177	\$22,666,009	\$2,510,446	\$6,091	\$23,051,332	\$2,895,769	\$7,026	\$23,443,204	\$3,287,641	\$6,977	\$23,841,739	\$3,686,176	\$8,944
Herrick District Library Operating	1.1000	0.5500	\$87,863,406	\$48,207	\$98,539,014	\$10,675,608	\$5,872	\$100,441,039	\$12,577,633	\$6,918	\$109,807,608	\$21,944,202	\$12,069	\$111,934,606	\$24,071,200	\$13,239	\$114,134,870	\$26,271,464	\$14,449
Herrick District Library Debt	0.1362	0.0000	\$87,863,406	\$0	\$98,539,014	\$10,675,608	\$0	\$100,441,039	\$12,577,633	\$0	\$109,807,608	\$21,944,202	\$0	\$111,934,606	\$24,071,200	\$0	\$114,134,870	\$26,271,464	\$0
Herrick District Library Subtotal	1.2362	0.5500	\$87,863,406	\$48,207	\$98,539,014	\$10,675,608	\$5,872	\$100,441,039	\$12,577,633	\$6,918	\$109,807,608	\$21,944,202	\$12,069	\$111,934,606	\$24,071,200	\$13,239	\$114,134,870	\$26,271,464	\$14,449
Max Transport Operating	0.3989	0.1995	\$87,863,406	\$17,486	\$98,539,014	\$10,675,608	\$2,130	\$100,441,039	\$12,577,633	\$2,509	\$109,807,608	\$21,944,202	\$4,378	\$111,934,606	\$24,071,200	\$4,802	\$114,134,870	\$26,271,464	\$5,241
West Michigan Airport	0.0992	0.0496	\$67,707,843	\$3,358	\$76,250,029	\$8,542,186	\$424	\$77,775,029	\$10,067,186	\$499	\$86,756,276	\$19,048,433	\$945	\$88,491,401	\$20,783,558	\$1,031	\$90,293,132	\$22,585,289	\$1,120
Holland Swim Pool Operating	0.9875	0.4938	\$67,707,843	\$33,433	\$76,250,029	\$8,542,186	\$4,218	\$77,775,029	\$10,067,186	\$4,971	\$86,756,276	\$19,048,433	\$9,406	\$88,491,401	\$20,783,558	\$10,263	\$90,293,132	\$22,585,289	\$11,153
Holland Swim Pool Debt	0.6800	0.0000	\$67,707,843	\$0	\$76,250,029	\$8,542,186	\$0	\$77,775,029	\$10,067,186	\$0	\$86,756,276	\$19,048,433	\$0	\$88,491,401	\$20,783,558	\$0	\$90,293,132	\$22,585,289	\$0
Holland Swim Pool Subtotal	1.6675	0.4938	\$67,707,843	\$33,433	\$76,250,029	\$8,542,186	\$4,218	\$77,775,029	\$10,067,186	\$4,971	\$86,756,276	\$19,048,433	\$9,406	\$88,491,401	\$20,783,558	\$10,263	\$90,293,132	\$22,585,289	\$11,153
Holland DDA Operating	1.6034	0.8017	\$62,705,238	\$50,271	\$70,616,283	\$7,911,045	\$6,342	\$72,028,608	\$9,323,370	\$7,475	\$80,894,926	\$18,189,688	\$14,583	\$82,512,825	\$19,807,587	\$15,880	\$84,163,081	\$21,457,843	\$17,203
Ottawa Intermediate School District Operating	5.5234	2.7617	\$87,863,406	\$242,061	\$98,539,014	\$10,675,608	\$29,483	\$100,441,039	\$12,577,633	\$34,736	\$109,807,608	\$21,944,202	\$60,603	\$111,934,606	\$24,071,200	\$66,477	\$114,134,870	\$26,271,464	\$72,554
Michigan State Education Operating	6.0000	3.0000	\$87,863,406	\$262,948	\$98,539,014	\$10,675,608	\$32,027	\$100,441,039	\$12,577,633	\$37,733	\$109,807,608	\$21,944,202	\$65,833	\$111,934,606	\$24,071,200	\$72,214	\$114,134,870	\$26,271,464	\$78,814
Holland School District Operating (Non-PRE) ¹	18.0000	9.0000	\$64,579,762	\$581,201	\$72,727,302	\$8,147,540	\$73,328	\$74,181,848	\$9,602,086	\$86,419	\$83,091,231	\$18,511,469	\$166,603	\$84,753,055	\$20,173,293	\$181,560	\$86,480,018	\$21,900,256	\$197,102
Holland School District Building and Site	0.7422	0.3711	\$67,707,843	\$25,126	\$76,250,029	\$8,542,186	\$3,170	\$77,775,029	\$10,067,186	\$3,736	\$86,756,276	\$19,048,433	\$7,069	\$88,491,401	\$20,783,558	\$7,713	\$90,293,132	\$22,585,289	\$8,381
Holland School District Debt	6.6200	0.0000	\$67,707,843	\$0	\$76,250,029	\$8,542,186	\$0	\$77,775,029	\$10,067,186	\$0	\$86,756,276	\$19,048,433	\$0	\$88,491,401	\$20,783,558	\$0	\$90,293,132	\$22,585,289	\$0
Holland School District Subtotal**	25.3622	9.3711	\$67,707,843	\$606,326	\$76,250,029	\$8,542,186	\$76,498	\$77,775,029	\$10,067,186	\$90,155	\$86,756,276	\$19,048,433	\$173,672	\$88,491,401	\$20,783,558	\$189,272	\$90,293,132	\$22,585,289	\$205,484
West Ottawa School District Operating (Non-PRE) ¹	18.0000	9.0000	\$20,025,707	\$178,321	\$22,145,308	\$2,119,601	\$19,076	\$22,519,890	\$2,494,183	\$22,448	\$22,902,728	\$2,877,021	\$25,893	\$23,292,074	\$3,266,367	\$29,397	\$23,688,040	\$3,662,333	\$32,961
West Ottawa School District Building and Site	0.2997	0.1499	\$20,155,563	\$2,989	\$22,288,985	\$2,133,422	\$320	\$22,666,009	\$2,510,446	\$376	\$23,051,332	\$2,895,769	\$434	\$23,443,204	\$3,287,641	\$493	\$23,841,739	\$3,686,176	\$553
West Ottawa School District Debt	7.7500	0.0000	\$20,155,563	\$0	\$22,288,985	\$2,133,422	\$0	\$22,666,009	\$2,510,446	\$0	\$23,051,332	\$2,895,769	\$0	\$23,443,204	\$3,287,641	\$0	\$23,841,739	\$3,686,176	\$0
West Ottawa School District Subtotal**	26.0497	9.1499	\$20,155,563	\$181,310	\$22,288,985	\$2,133,422	\$19,396	\$22,666,009	\$2,510,446	\$22,824	\$23,051,332	\$2,895,769	\$26,327	\$23,443,204	\$3,287,641	\$29,890	\$23,841,739	\$3,686,176	\$33,514
Total Taxes Captured								\$256,835		\$302,608			\$538,167		\$589,558				\$642,739

** This shows what is collected from school districts. However, there is no loss to school districts due to the SmartZone because they are reimbursed by the State School Aid Fund.

¹ PRE parcels are not taxed on the School District Operating tax items

Notes:

Based on a 1.7% growth rate in Holland Township and a 2.0% growth rate in Holland City

IFT parcels only pay 50% of the tax mills until their exemption expires; the SmartZone only captures 50% of that reduced payment from IFT parcels. Holland Township has two IFT parcels that expire in 2020 and a third IFT parcel that expires in 2021. Holland City has two IFT parcels, one that will expire in 2018 and one that will expire in 2023

Holland City has several parcels in Brownfield TIFs. It is assumed that the TIFs will not be renewed when they expire and the tax dollars associated with the Brownfield parcels will be added back to the tax roll when they expire

EXUBERANT PLUS BOUNDARY

SmartZone Tax Capture (1% Increase in Normal Growth Rate due to SmartZone)

Collect 50% of Local Operating Millages, School Millages, and Specially Approved Millages --- Excludes All Debt Millages

Taxing Jurisdiction and Tax Item	Amount of Tax Mills	Tax Mills Captured by SmartZone	Base Year of SmartZone		2026			2027			2028			2029			2030			Total Taxes Captured by SmartZone (2016-2030)
			Taxable Value (2015)	Tax Revenue (2015)	Estimated Taxable Value (2026)	Estimated Increase in Taxable Value (2015-2026)	Estimated Taxes Captured by SmartZone (2026)	Estimated Taxable Value (2027)	Estimated Increase in Taxable Value (2015-2027)	Estimated Taxes Captured by SmartZone (2027)	Estimated Taxable Value (2028)	Estimated Increase in Taxable Value (2015-2028)	Estimated Taxes Captured by SmartZone (2028)	Estimated Taxable Value (2029)	Estimated Increase in Taxable Value (2015-2029)	Estimated Taxes Captured by SmartZone (2029)	Estimated Taxable Value (2030)	Estimated Increase in Taxable Value (2015-2030)	Estimated Taxes Captured by SmartZone (2030)	
Ottawa County Operating	3.6000	1.8000	\$87,863,406	\$157,769	\$116,346,042	\$28,482,636	\$51,269	\$118,600,222	\$30,736,816	\$55,326	\$128,493,001	\$40,629,595	\$73,133	\$130,987,626	\$43,124,220	\$77,624	\$133,530,864	\$45,667,458	\$82,201	\$558,415
Ottawa County E-911	0.4400	0.2200	\$87,863,406	\$19,283	\$116,346,042	\$28,482,636	\$6,266	\$118,600,222	\$30,736,816	\$6,762	\$128,493,001	\$40,629,595	\$8,939	\$130,987,626	\$43,124,220	\$9,487	\$133,530,864	\$45,667,458	\$10,047	\$68,251
Ottawa County Parks	0.3165	0.1583	\$87,863,406	\$13,875	\$116,346,042	\$28,482,636	\$4,509	\$118,600,222	\$30,736,816	\$4,866	\$128,493,001	\$40,629,595	\$6,432	\$130,987,626	\$43,124,220	\$6,827	\$133,530,864	\$45,667,458	\$7,229	\$49,110
Ottawa County Roads	0.5000	0.2500	\$87,863,406	\$21,912	\$116,346,042	\$28,482,636	\$7,121	\$118,600,222	\$30,736,816	\$7,684	\$128,493,001	\$40,629,595	\$10,157	\$130,987,626	\$43,124,220	\$10,781	\$133,530,864	\$45,667,458	\$11,417	\$77,558
Ottawa County Subtotal	4.8565	2.4283	\$87,863,406	\$190,926	\$116,346,042	\$28,482,636	\$69,164	\$118,600,222	\$30,736,816	\$74,638	\$128,493,001	\$40,629,595	\$98,661	\$130,987,626	\$43,124,220	\$104,719	\$133,530,864	\$45,667,458	\$110,894	\$753,333
Holland City Operating	9.5000	4.7500	\$67,707,843	\$321,603	\$92,098,994	\$24,391,151	\$115,858	\$93,940,974	\$26,233,131	\$124,607	\$103,414,546	\$35,706,703	\$169,607	\$105,482,836	\$37,774,993	\$179,431	\$107,592,493	\$39,884,650	\$189,452	\$1,262,926
Holland City Street Improvements	1.4268	0.7134	\$67,707,843	\$48,301	\$92,098,994	\$24,391,151	\$17,401	\$93,940,974	\$26,233,131	\$18,715	\$103,414,546	\$35,706,703	\$25,473	\$105,482,836	\$37,774,993	\$26,949	\$107,592,493	\$39,884,650	\$28,454	\$189,678
Holland City Sidewalk Improvements	0.0500	0.0250	\$67,707,843	\$1,693	\$92,098,994	\$24,391,151	\$610	\$93,940,974	\$26,233,131	\$656	\$103,414,546	\$35,706,703	\$893	\$105,482,836	\$37,774,993	\$944	\$107,592,493	\$39,884,650	\$997	\$6,647
Holland City Municipal Capital Improvements	0.3180	0.1590	\$67,707,843	\$10,765	\$92,098,994	\$24,391,151	\$3,878	\$93,940,974	\$26,233,131	\$4,171	\$103,414,546	\$35,706,703	\$5,677	\$105,482,836	\$37,774,993	\$6,006	\$107,592,493	\$39,884,650	\$6,342	\$42,275
Holland City Fire Station Reinvestment	0.2585	0.1293	\$67,707,843	\$8,754	\$92,098,994	\$24,391,151	\$3,154	\$93,940,974	\$26,233,131	\$3,392	\$103,414,546	\$35,706,703	\$4,617	\$105,482,836	\$37,774,993	\$4,884	\$107,592,493	\$39,884,650	\$5,157	\$34,378
Holland City Debt	2.2198	0.0000	\$67,707,843	\$0	\$92,098,994	\$24,391,151	\$0	\$93,940,974	\$26,233,131	\$0	\$103,414,546	\$35,706,703	\$0	\$105,482,836	\$37,774,993	\$0	\$107,592,493	\$39,884,650	\$0	\$0
Holland City Subtotal	13.7731	5.7767	\$67,707,843	\$391,117	\$92,098,994	\$24,391,151	\$140,900	\$93,940,974	\$26,233,131	\$151,541	\$103,414,546	\$35,706,703	\$206,267	\$105,482,836	\$37,774,993	\$218,215	\$107,592,493	\$39,884,650	\$230,402	\$1,535,905
Holland Township Operating	3.4728	1.7364	\$20,155,563	\$34,630	\$24,247,048	\$4,091,485	\$7,104	\$24,659,248	\$4,503,685	\$7,820	\$25,078,455	\$4,922,892	\$8,548	\$25,504,789	\$5,349,226	\$9,288	\$25,938,370	\$5,782,807	\$10,041	\$77,012
Holland Township EMS and Police Services	1.0000	0.5000	\$20,155,563	\$9,972	\$24,247,048	\$4,091,485	\$2,046	\$24,659,248	\$4,503,685	\$2,252	\$25,078,455	\$4,922,892	\$2,461	\$25,504,789	\$5,349,226	\$2,675	\$25,938,370	\$5,782,807	\$2,891	\$22,176
Holland Township Non-Motorized Path	0.3800	0.1900	\$20,155,563	\$3,789	\$24,247,048	\$4,091,485	\$777	\$24,659,248	\$4,503,685	\$856	\$25,078,455	\$4,922,892	\$935	\$25,504,789	\$5,349,226	\$1,016	\$25,938,370	\$5,782,807	\$1,099	\$8,427
Holland Township Subtotal	4.8528	2.4264	\$20,155,563	\$48,390	\$24,247,048	\$4,091,485	\$9,928	\$24,659,248	\$4,503,685	\$10,928	\$25,078,455	\$4,922,892	\$11,945	\$25,504,789	\$5,349,226	\$12,979	\$25,938,370	\$5,782,807	\$14,031	\$107,614
Herrick District Library Operating	1.1000	0.5500	\$87,863,406	\$48,207	\$116,346,042	\$28,482,636	\$15,665	\$118,600,222	\$30,736,816	\$16,905	\$128,493,001	\$40,629,595	\$22,346	\$130,987,626	\$43,124,220	\$23,718	\$133,530,864	\$45,667,458	\$25,117	\$170,627
Herrick District Library Debt	0.1362	0.0000	\$87,863,406	\$0	\$116,346,042	\$28,482,636	\$0	\$118,600,222	\$30,736,816	\$0	\$128,493,001	\$40,629,595	\$0	\$130,987,626	\$43,124,220	\$0	\$133,530,864	\$45,667,458	\$0	\$0
Herrick District Library Subtotal	1.2362	0.5500	\$87,863,406	\$48,207	\$116,346,042	\$28,482,636	\$15,665	\$118,600,222	\$30,736,816	\$16,905	\$128,493,001	\$40,629,595	\$22,346	\$130,987,626	\$43,124,220	\$23,718	\$133,530,864	\$45,667,458	\$25,117	\$170,627
Max Transport Operating	0.3989	0.1995	\$87,863,406	\$17,486	\$116,346,042	\$28,482,636	\$5,682	\$118,600,222	\$30,736,816	\$6,132	\$128,493,001	\$40,629,595	\$8,106	\$130,987,626	\$43,124,220	\$8,603	\$133,530,864	\$45,667,458	\$9,111	\$61,891
West Michigan Airport	0.0992	0.0496	\$67,707,843	\$3,358	\$92,098,994	\$24,391,151	\$1,210	\$93,940,974	\$26,233,131	\$1,301	\$103,414,546	\$35,706,703	\$1,771	\$105,482,836	\$37,774,993	\$1,874	\$107,592,493	\$39,884,650	\$1,978	\$13,188
Holland Swim Pool Operating	0.9875	0.4938	\$67,707,843	\$33,433	\$92,098,994	\$24,391,151	\$12,044	\$93,940,974	\$26,233,131	\$12,954	\$103,414,546	\$35,706,703	\$17,632	\$105,482,836	\$37,774,993	\$18,653	\$107,592,493	\$39,884,650	\$19,695	\$131,291
Holland Swim Pool Debt	0.6800	0.0000	\$67,707,843	\$0	\$92,098,994	\$24,391,151	\$0	\$93,940,974	\$26,233,131	\$0	\$103,414,546	\$35,706,703	\$0	\$105,482,836	\$37,774,993	\$0	\$107,592,493	\$39,884,650	\$0	\$0
Holland Swim Pool Subtotal	1.6675	0.4938	\$67,707,843	\$33,433	\$92,098,994	\$24,391,151	\$12,044	\$93,940,974	\$26,233,131	\$12,954	\$103,414,546	\$35,706,703	\$17,632	\$105,482,836	\$37,774,993	\$18,653	\$107,592,493	\$39,884,650	\$19,695	\$131,291
Holland DDA Operating	1.6034	0.8017	\$62,705,238	\$50,271	\$85,846,343	\$23,141,105	\$18,552	\$87,563,270	\$24,858,032	\$19,929	\$92,470,454	\$29,765,216	\$23,863	\$94,319,863	\$31,614,625	\$25,345	\$96,206,261	\$33,501,023	\$26,858	\$191,518
Ottawa Intermediate School District Operating	5.5234	2.7617	\$87,863,406	\$242,061	\$116,346,042	\$28,482,636	\$78,660	\$118,600,222	\$30,736,816	\$84,886	\$128,493,001	\$40,629,595	\$112,207	\$130,987,626	\$43,124,220	\$119,096	\$133,530,864	\$45,667,458	\$126,120	\$856,764
Michigan State Education Operating	6.0000	3.0000	\$87,863,406	\$262,948	\$116,346,042	\$28,482,636	\$85,448	\$118,600,222	\$30,736,816	\$92,210	\$128,493,001	\$40,629,595	\$121,889	\$130,987,626	\$43,124,220	\$129,373	\$133,530,864	\$45,667,458	\$137,002	\$930,692
Holland School District Operating (Non-PRE) ¹	18.0000	9.0000	\$64,579,762	\$581,201	\$88,209,619	\$23,629,857	\$212,669	\$89,973,811	\$25,394,049	\$228,546	\$99,368,039	\$34,788,277	\$313,094	\$101,355,400	\$36,775,638	\$330,981	\$103,382,508	\$38,802,746	\$349,225	\$2,306,986
Holland School District Building and Site	0.7422	0.3711	\$67,707,843	\$25,126	\$92,098,994	\$24,391,151	\$9,052	\$93,940,974	\$26,233,131	\$9,735	\$103,414,546	\$35,706,703	\$13,251	\$105,482,836	\$37,774,993	\$14,018	\$107,592,493	\$39,884,650	\$14,801	\$98,165
Holland School District Debt	6.6200	0.0000	\$67,707,843	\$0	\$92,098,994	\$24,391,151	\$0	\$93,940,974	\$26,233,131	\$0	\$103,414,546	\$35,706,703	\$0	\$105,482,836	\$37,774,993	\$0	\$107,592,493	\$39,884,650	\$0	\$0
Holland School District Subtotal**	25.3622	9.3711	\$67,707,843	\$606,326	\$92,098,994	\$24,391,151	\$221,720	\$93,940,974	\$26,233,131	\$238,282	\$103,414,546	\$35,706,703	\$326,345	\$105,482,836	\$37,774,993	\$344,999	\$107,592,493	\$39,884,650	\$364,026	\$2,405,152
West Ottawa School District Operating (Non-PRE) ¹	18.0000	9.0000	\$20,025,707	\$178,321	\$24,090,736	\$4,065,029	\$36,585	\$24,500,279	\$4,474,572	\$40,271	\$24,916,783	\$4,891,076	\$44,020	\$25,340,369	\$5,314,662	\$47,832	\$25,771,155	\$5,745,448	\$51,709	\$393,555
West Ottawa School District Building and Site	0.2997	0.1499	\$20,155,563	\$2,989	\$24,247,048	\$4,091,485	\$613	\$24,659,248	\$4,503,685	\$675	\$25,078,455	\$4,922,892	\$738	\$25,504,789	\$5,349,226	\$802	\$25,938,370	\$5,782,807	\$867	\$6,598
West Ottawa School District Debt	7.7500	0.0000	\$20,155,563	\$0	\$24,247,048	\$4,091,485	\$0	\$24,659,248	\$4,503,685	\$0	\$25,078,455	\$4,922,892	\$0	\$25,504,789	\$5,349,226	\$0	\$25,938,370	\$5,782,807	\$0	\$0
West Ottawa School District Subtotal**	26.0497	9.1499	\$20,155,563	\$181,310	\$24,247,048	\$4,091,485	\$37,199	\$24,659,248	\$4,503,685	\$40,946	\$25,078,455	\$4,922,892	\$44,758	\$25,504,789	\$5,349,226	\$48,634	\$25,938,370	\$5,782,807	\$52,576	\$400,153
Total Taxes Captured							\$696,174			\$750,652			\$995,789		\$1,056,208			\$1,117,810	\$7,558,127	

** This shows what is collected from school districts