

Ottawa County Influenza Surveillance Report

MMWR Week 22: May 28, 2023 – June 3, 2023*

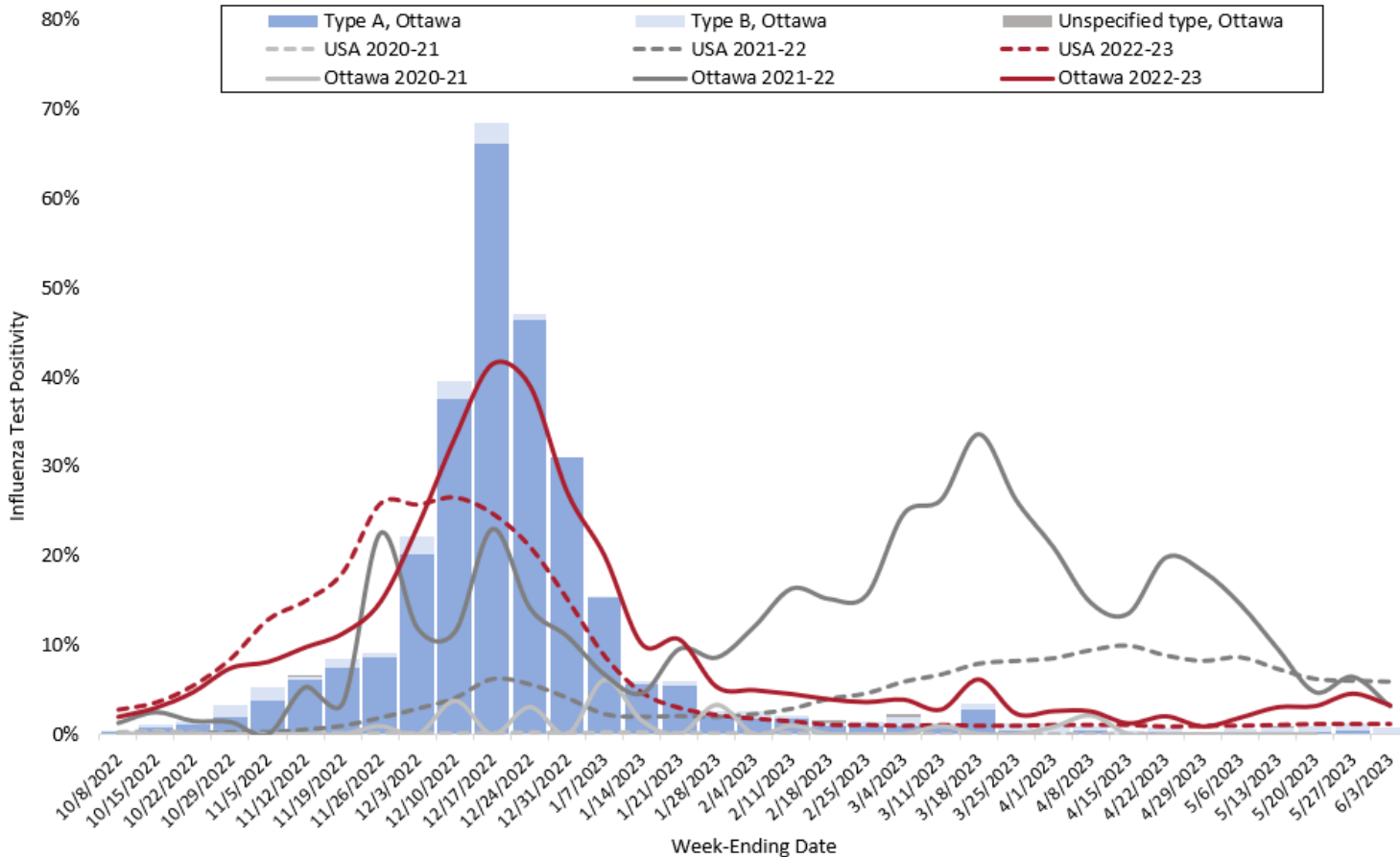


Scan code or click [HERE](#) to tell
us what you think of this report

**Morbidity and Mortality Weekly Report*

Influenza Test Positivity in the USA and Ottawa County

Figure 1: Positivity Rate of Influenza Tests by Week, Ottawa County and United States



- Influenza positivity is the percent of influenza tests conducted by reporting providers and laboratories that result positive.
- During week 22, influenza test positivity in Ottawa County was 3.3%, down from 4.6% the week before. The number of influenza tests completed during week 22 also decreased 14% from the week before.
- Current influenza test positivity in Ottawa County remains low, and similar to that reported around the same time last season (3.1%).
- Elevated influenza positivity is often an indication that influenza is circulating in the community. Influenza positivity in Ottawa County is low.
- Seasonal influenza activity remains low nationally. Test positivity in the US during week 22 was 1.1%.

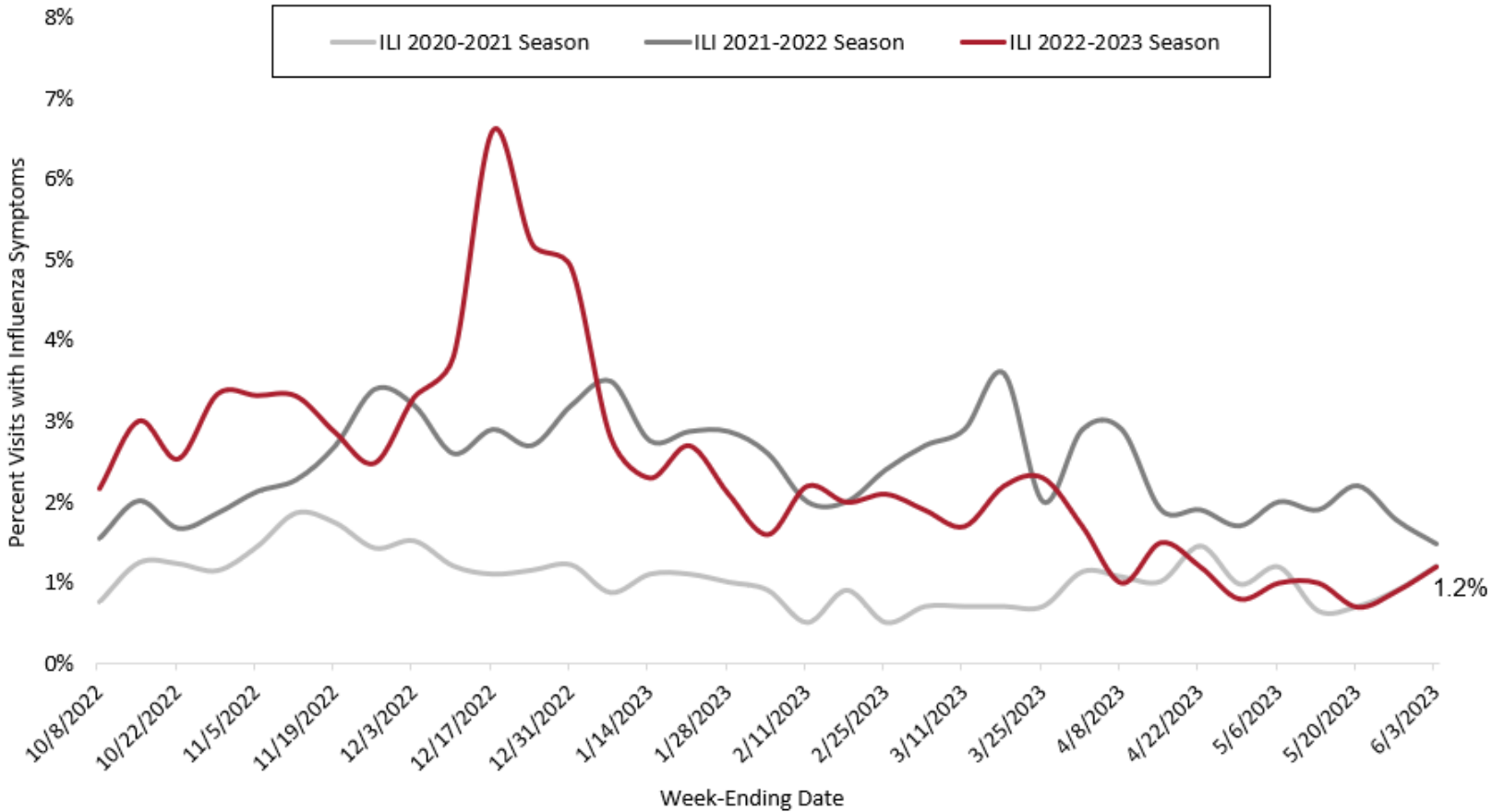
Influenza Positive Tests Reported in Ottawa County – Last 8 Weeks

Week-Ending Date	Type A	Type B	Unspecified	Total Influenza	Total Tested	Positivity
4/15/2023	1	4	0	5	393	1.3%
4/22/2023	3	4	0	7	339	2.1%
4/29/2023	1	2	0	3	328	0.9%
5/6/2023	1	5	0	6	313	1.9%
5/13/2023	1	7	1	9	292	3.1%
5/20/2023	3	6	0	9	281	3.2%
5/27/2023	5	8	0	13	283	4.6%
6/3/2023	1	7	0	8	243	3.3%

Note: Several factors including changes in healthcare seeking behavior, increased awareness, hygiene practices and other non-pharmaceutical interventions, and initial public health orders in response to the COVID-19 pandemic may have contributed to the lower influenza activity reported during the 2020 influenza season.

Syndromic Surveillance for Influenza in Ottawa County

Figure 2: Percentage of Emergency Department (ED) and Urgent Care (UC) Visits in Ottawa County with Influenza-like Illnesses (ILI).



Note: Several factors including changes in healthcare seeking behavior, increased awareness, hygiene practices and other non-pharmaceutical interventions, and initial public health orders in response to the COVID-19 pandemic may have contributed to the lower influenza activity reported during the 2020 influenza season.

- These data reflect the proportion of patients seen in Ottawa County hospital EDs and Urgent Care (UC) facilities with influenza-like illnesses (ILI)*.
- During week 22, Ottawa County ED and UC visits with ILI was 1.2%, up from 0.9% reported the previous week.
- This proportion remains relatively lower than that seen throughout the current flu season, also below that reported at a similar time during the last season.

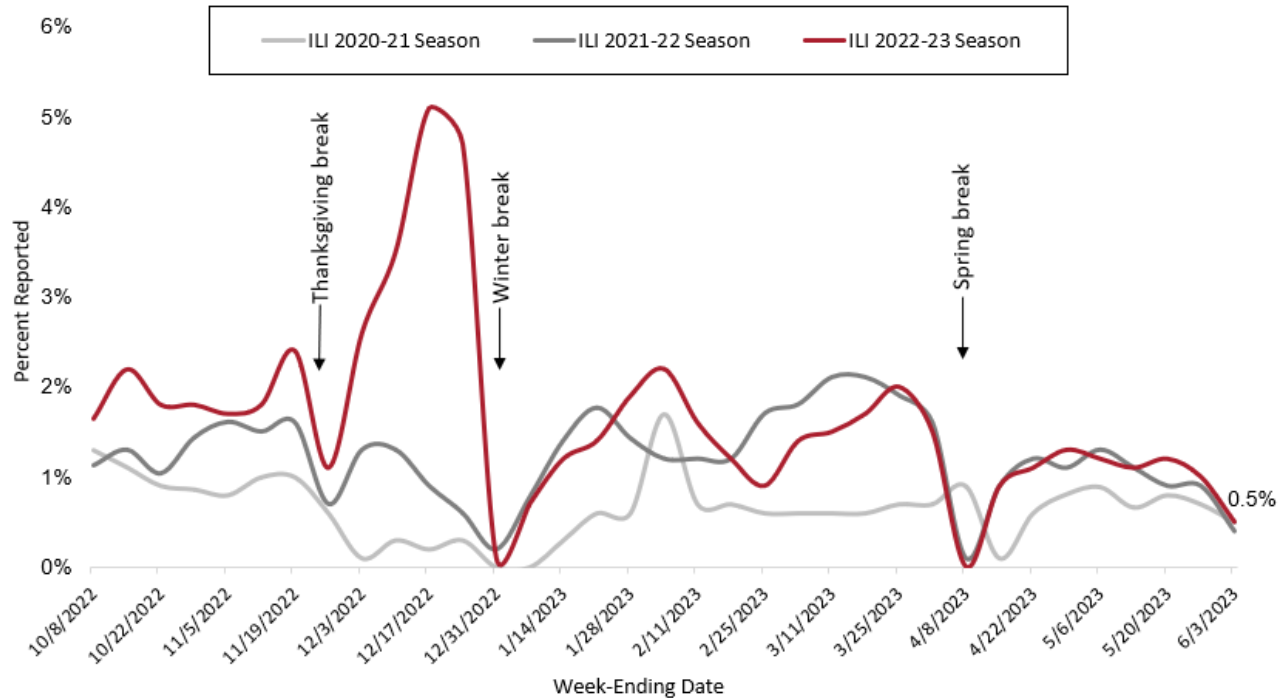
* Influenza-like illnesses include sudden onsets of fever, cough and/or sore throat.

MMWR Week	Week-Ending Date	ILI Visits	Total ED/UC Visits	Percent of ED/UC Visits
15	4/15/2023	32	2166	1.5%
16	4/22/2023	26	2102	1.2%
17	4/29/2023	17	2043	0.8%
18	5/6/2023	22	2108	1.0%
19	5/13/2023	24	2289	1.0%
20	5/20/2023	15	2252	0.7%
21	5/27/2023	19	2154	0.9%
22	6/3/2023	27	2228	1.2%

Influenza-Like Illness (ILI) Surveillance from Reporting Schools, Childcare and Healthcare Settings

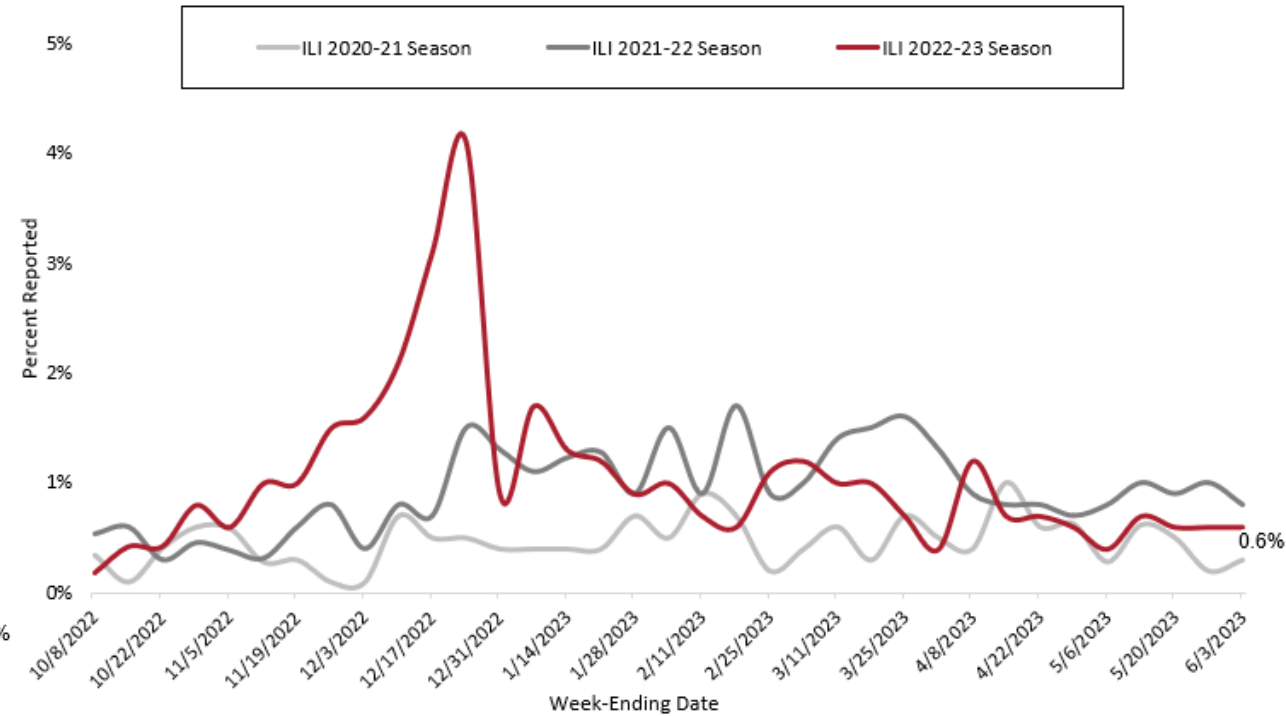
- During week 22, the proportion of ILI activity reported in school/childcare settings was 0.5%, down from 1.0% the previous week. ILI reported during week 22 was comparable to that reported at a similar time reported last 2 seasons.

Figure 3: Percent ILI in Schools and Childcare ILI by Week



Note: Several factors including changes in healthcare seeking behavior, increased awareness, hygiene practices and other non-pharmaceutical interventions, initial public health orders in response to the COVID-19 pandemic and absences for other reasons including COVID-19 quarantine and isolation may contribute to the lower influenza activity reported during the 2020 influenza season.

Figure 4: Percent Healthcare ILI Visits by Week



- Reported ILI in healthcare offices remained at 0.6% during week 22, similar to that reported since week 20. This proportion also remains below that reported at a similar time last season.
- A total of nine (9) influenza outbreaks have been reported in long-term care facility settings so far this season.

Influenza-Associated Pediatric Mortality

- Nationally, **two (2) new influenza-associated pediatric deaths** were reported to the Centers for Disease Control and Prevention during **week 22**. Of those two deaths, one occurred during the current 2022-2023 season, while the other was a delayed report of a death that occurred during the 2018-2019 season. A total of **one hundred and fifty-five (155) influenza-associated pediatric deaths** were reported during the 2022-2023 season (*data as of June 3, 2023*). **Four (4)** influenza-associated pediatric deaths have been reported in Michigan during this season. There have been no reports of influenza-associated pediatric deaths in Ottawa County. (*Note that other measures of disease severity including influenza-associated hospitalizations and complications are not reported in these data*).

Influenza Vaccine Coverage

- The best way to prevent influenza is by getting the influenza vaccine each year. Over the past four influenza seasons, vaccination coverage in Ottawa County hovered around 40%. The table below reflects total vaccination coverage rate in Ottawa County and statewide (MI) over the last four influenza seasons and through May 13 this season.

	2018-19 Season	2019-20 Season	2020-21 Season	2021-22 Season	2022-23 Season (YTD)
Ottawa County	39%	40.2%	42.9%	40.1%	35.5%
Michigan	30.3%	31.6%	34.3%	31.8%	29.2%
Healthy People 2020 Target	70%	70%	70%	70%	70%

YTD = Year to date

Preventing the flu/influenza

- Get the flu vaccine
- Stay home when sick and limit contact with other people
- Wash hands frequently with soap and water
- Cover coughs and sneezes

[Click here to learn more about preventive steps.](#)

Useful Links and Resources

- MDHHS reports first influenza-associated pediatric death in Michigan this season, February 23, 2023: https://content.govdelivery.com/attachments/MIDHHS/2023/02/22/file_attachments/2416511/Pediatric%20Flu%20Death.pdf
- MDHHS recognizes National Influenza Vaccination Week, December 5-9, 2022: <https://www.michigan.gov/mdhhs/inside-mdhhs/newsroom/2022/12/05/flu-vaccination-week-2022#:~:text=MDHHS%20recognizes%20National%20Influenza%20Vaccination%20Week%20Dec.%205%2D9>
- National influenza surveillance data are available at: <https://www.cdc.gov/flu/weekly/index.htm>
- Statewide influenza surveillance reports are available at: https://www.michigan.gov/flu/surveillance/past-michigan-flu-focus-surveillance-reports?utm_campaign=&utm_medium=email&utm_source=govdelivery
- State and county level influenza vaccination coverage data are available at: <https://www.michigan.gov/flu/flu-dashboard>
- Disease burden of flu in the United States: <https://www.cdc.gov/flu/about/burden/index.html>
- Preventing Seasonal Flu: <https://www.cdc.gov/flu/prevent/index.html>
- Season flu vaccine effectiveness studies: <https://www.cdc.gov/flu/vaccines-work/effectiveness-studies.htm>
- Flu vaccine finder: <https://www.vaccines.gov/find-vaccines/>

*Compiled by Derick N. Chia, MPH
Epidemiologist at OCDPH
Email: dchia@miottawa.org*