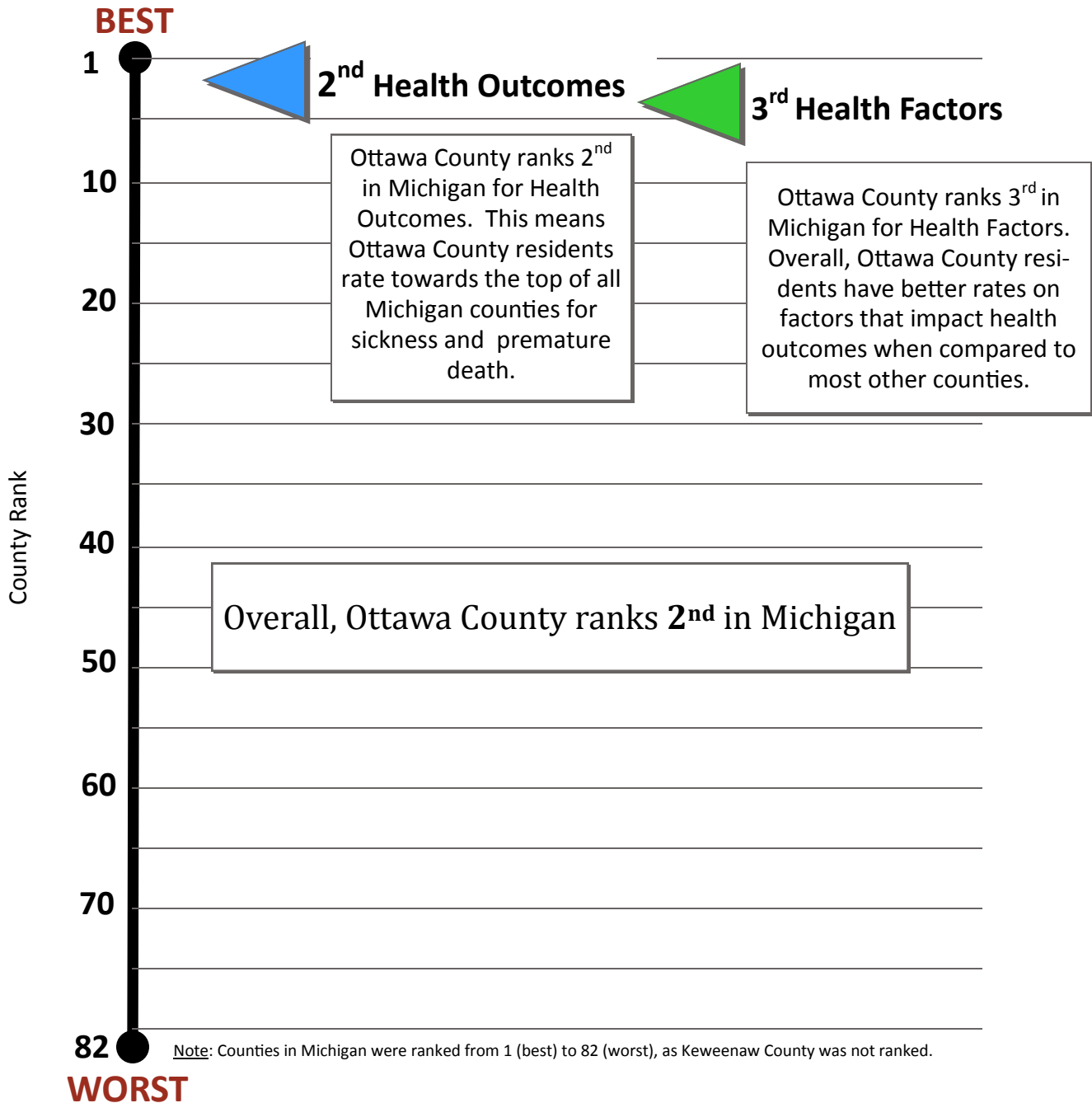


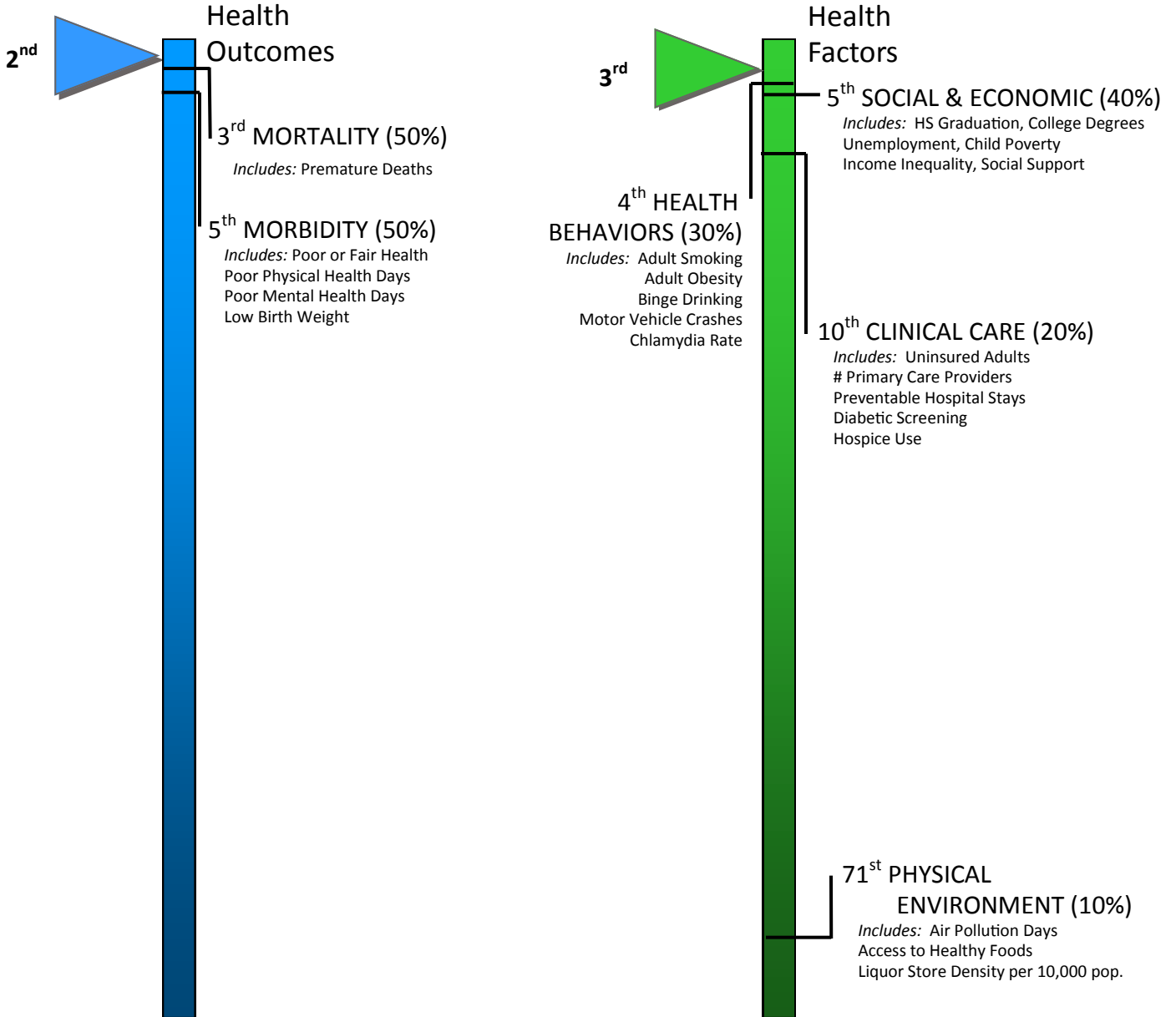


# 2010 County Health Rankings Report OTTAWA COUNTY



# Detailed Rankings OTTAWA COUNTY

Each of the health ranking main categories is comprised of two or more sub-rankings which are themselves composed of rates of several different indicators. Please see [www.countyhealthrankings](http://www.countyhealthrankings) for an interactive and detailed presentation of the data.



Ottawa County ranks 2<sup>nd</sup> in Michigan for Health Outcomes. Our sub-ranking is higher for premature deaths than for sickness.

Ottawa County ranks 3<sup>rd</sup> in Michigan for Health Factors. The sub-rankings address a variety of health factors that influence health outcomes. The sub-groups comprise differing proportions of the final rank; health behaviors have a greater influence than the physical environment, for example.

# 2010 Ottawa SNAPSHOT

	Ottawa County	Target Value *	Michigan	Rank (of 82)
<b>Health Outcomes</b>				<b>2</b>
<b>Mortality</b>				<b>3</b>
Premature death **	4,588	≤ 5,497	7,390	
<b>Morbidity</b>				<b>5</b>
Poor or fair health	9%	≤ 11%	14%	
Poor physical health days	3.1	≤ 2.9	3.6	
Poor mental health days	2.6	≤ 2.8	3.7	
Low birth weight	6.1%	≤ 6%	8%	
<b>Health Factors</b>				<b>3</b>
<b>Health Behaviors</b>				<b>4</b>
Adult smoking	17%	≤ 18%	23%	
Adult obesity	26%	≤ 28%	28%	
Binge drinking	16%	≤ 12%	18%	
Motor vehicle crash death rate	13	≤ 12	13	
Chlamydia rate	186	≤ 50	370	
Teen birth rate	23	≤ 21	36	
<b>Clinical Care</b>				<b>10</b>
Uninsured adults	12%	≤ 10%	12%	
Primary care provider rate	67	≥ 152	113	
Preventable hospital stays	50	≤ 50	76	
Diabetic screening	87%	≥ 88%	82%	
Hospice Use	51%	≥ 45%	38%	
<b>Social &amp; Economic Factors</b>				<b>5</b>
High school graduation	84%	≥ 88%	72%	
College degrees	28%	≥ 30%	24%	
Unemployment	7%	≤ 7%	8%	
Children in poverty	8%	≤ 11%	19%	
Income inequality	39	≤ 39	45	
Inadequate social support	15%	≤ 12%	19%	
Singe-parent households	6%	≤ 7%	10%	
Violent crime rate	192	≤ 128	550	
<b>Physical Environment</b>				<b>71</b>
Air pollution-particulate matter days	8	0	3	
Air pollution-ozone days	13	0	4	
Access to healthy foods	53%	≥ 71%	51%	
Liquor store density	0.7	0.0	1.1	

\* 90th Percentile, i.e. only 10% are better

\*\* Years of Potential Life Lost per 100,000, age-adjusted

**NOTE: Extensive and detailed information about each data source is available at [www.countyhealthrankings.org/michigan/Ottawa](http://www.countyhealthrankings.org/michigan/Ottawa)**

Template developed by Anne Barna, MA, Health Analyst for Barry-Eaton District Health Department