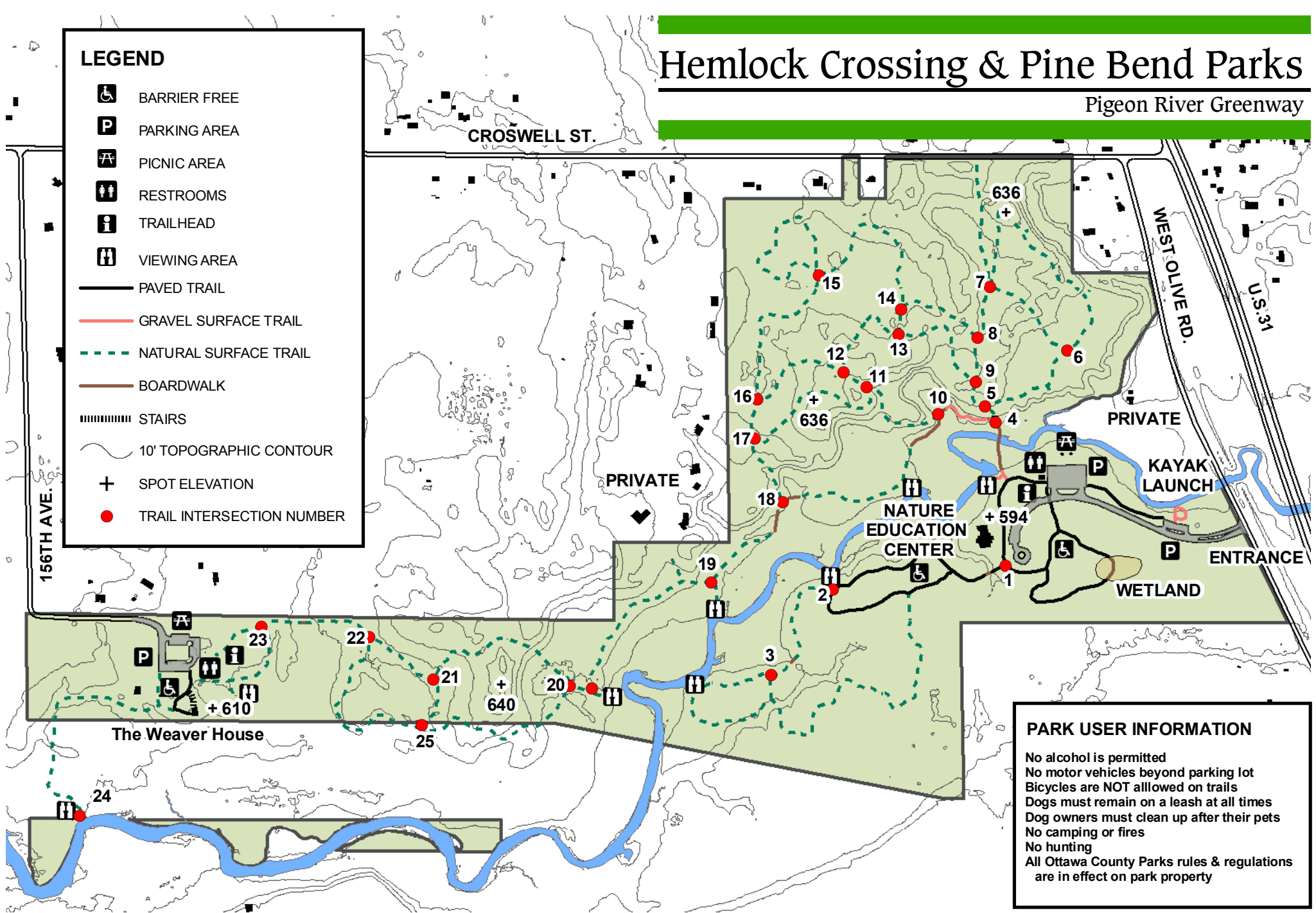


# Hemlock Crossing & Pine Bend Parks

Pigeon River Greenway

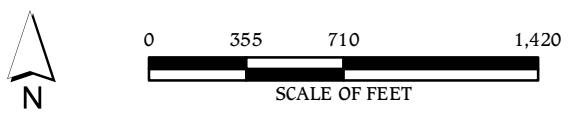
**LEGEND**

- BARRIER FREE
- PARKING AREA
- PICNIC AREA
- RESTROOMS
- TRAILHEAD
- VIEWING AREA
- PAVED TRAIL
- GRAVEL SURFACE TRAIL
- NATURAL SURFACE TRAIL
- BOARDWALK
- STAIRS
- 10' TOPOGRAPHIC CONTOUR
- SPOT ELEVATION
- TRAIL INTERSECTION NUMBER



**PARK USER INFORMATION**

- No alcohol is permitted
- No motor vehicles beyond parking lot
- Bicycles are NOT allowed on trails
- Dogs must remain on a leash at all times
- Dog owners must clean up after their pets
- No camping or fires
- No hunting
- All Ottawa County Parks rules & regulations are in effect on park property



# Hemlock Crossing

8115 West Olive Road  
West Olive, MI 49460

Hemlock Crossing opened in 2003 and offers 239 acres of woods and wetlands along the Pigeon River. Over 6 miles of trails for hiking and cross country skiing meander through bottomland and upland forest, old pine plantations and along the river. Trails connect to Pine Bend on the west end of this property. A pedestrian bridge and numerous overlooks offer scenic views of the river corridor, wetlands, natural springs and woods. Facilities include two small picnic shelters, a kayak/canoe launch and over a mile of paved trail.

## Facilities

- Kayak/canoe launch
- Unique pedestrian bridge
- Many scenic overlooks along the trails
- Two small picnic shelters with tables and grills
- Modern restrooms open warm months at Hemlock Crossing. Pit toilets available in winter
- Hiking and ungroomed cross country ski trails
- Nature Education Center

*\* Barrier free facilities include picnic shelters, restrooms, kayak launch and a one mile paved trail through woods and fields.*

## Park Hours

Hemlock Crossing is open year-round at the following times.

April 1 through October 31 - 7 a.m. to 10 p.m. November 1 through March 31 - 7 a.m. to 8 p.m.

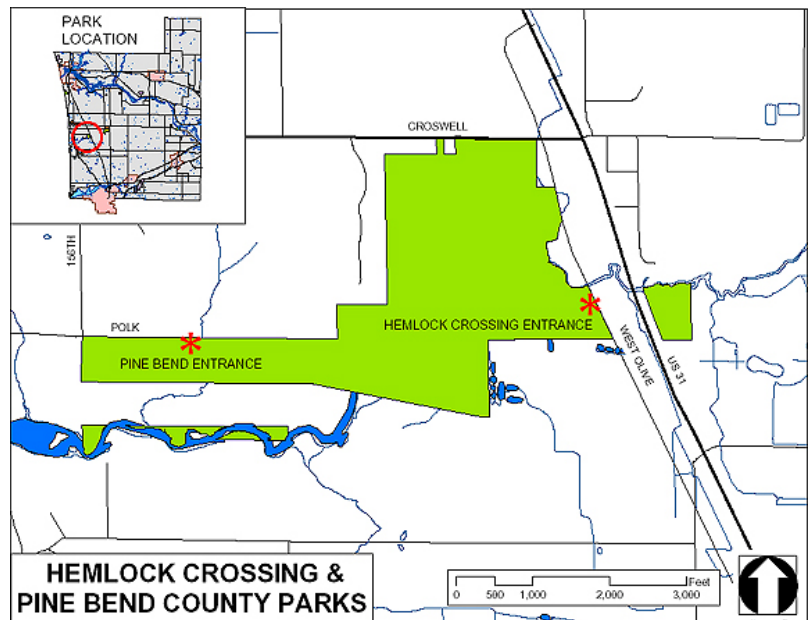
## Fees

There are no entry fees.

## Directions

Hemlock Crossing is located in Port Sheldon Township. From US 31, travel west on Croswell Street to West Olive Road. Turn south on West Olive Road and travel about 0.3 miles to the entrance on the west side of the road.

For emergencies, call 911.



### Ottawa County Parks & Recreation Commission

12220 Fillmore Street, West Olive, MI 49460

Phone: (616) 738-4810

Email: [parcs&rec@miottawa.org](mailto:parcs&rec@miottawa.org)

Website: <http://www.miottawa.org/parks>