

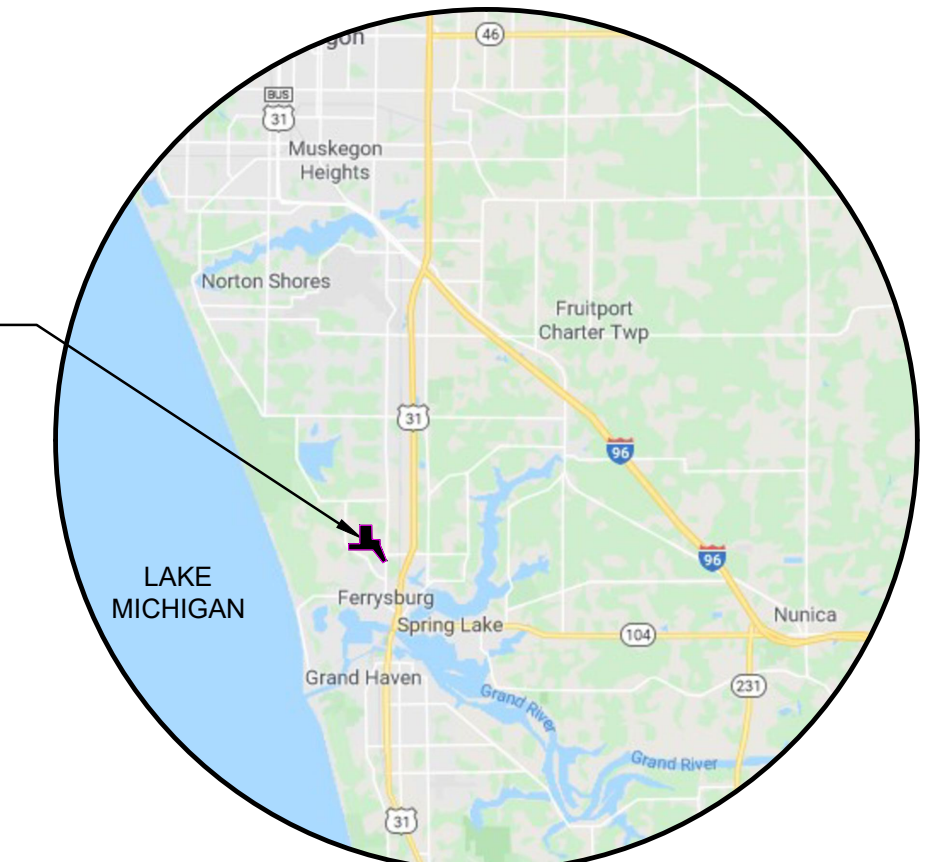


JOE BUSH

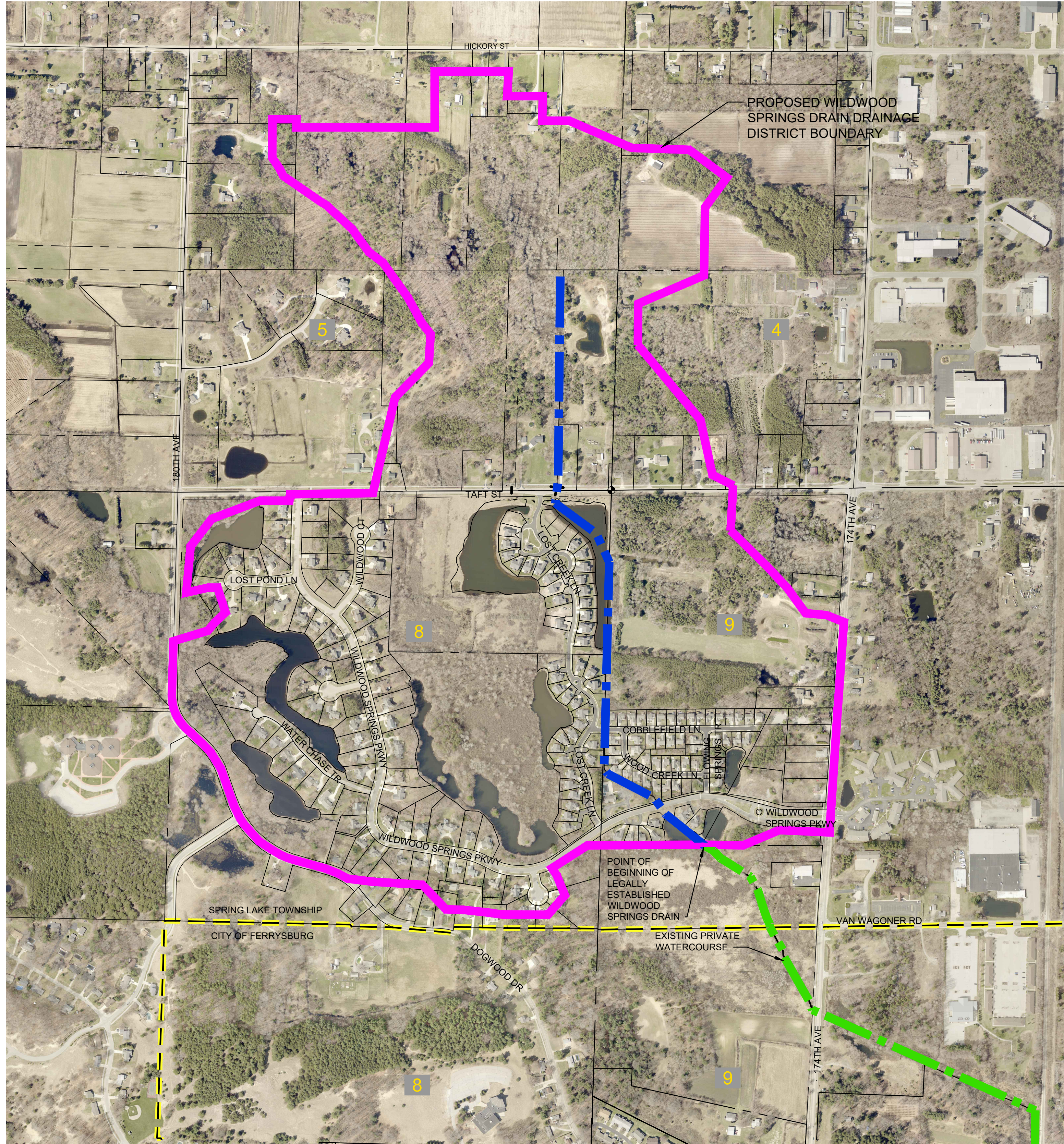
OTTAWA COUNTY WATER RESOURCES COMMISSIONER

WILDWOOD SPRINGS No. 5 DRAIN DRAINAGE DISTRICT

PART OF SECTION 4, 5, 8 & 9 OF SPRING LAKE TWP, R16W, T8N, OTTAWA COUNTY, MICHIGAN



LOCATION MAP
NO SCALE



ALL STORM SEWER AND DETENTION AREAS WITHIN THE WILDWOOD SPRINGS DEVELOPMENT WILL ALSO BE UNDER THE JURISDICTION OF THE OTTAWA COUNTY WATER RESOURCES COMMISSIONER AND THE WILDWOOD SPRINGS DRAINAGE DISTRICT

**WILDWOOD SPRINGS No. 5 DRAIN
DRAINAGE DISTRICT
ROUTE AND COURSE DESCRIPTION
MAY 24, 2019**

BEGINNING AT A POINT ON THE PARALLEL TO THE SOUTH LINE OF SAID SECTION 4 A DISTANCE OF 643 FEET EAST AND 405 FEET NORTH FROM THE SOUTHWEST CORNER OF SAID SECTION 4, TOWNSHIP 8 NORTH, RANGE 16 WEST, SPRING LAKE TOWNSHIP, TOWNSHIP 8 NORTH, RANGE 16 WEST, OTTAWA COUNTY, MICHIGAN, THENCE N 51°09' W 304 FEET, THENCE N 35°39' W 222 FEET, THENCE N 62°31' W 316 FEET, THENCE N 34°42' W 40 FEET, THENCE N 1°24' W 1255 FEET, THENCE N 24°22' W 191 FEET, THENCE N 53°36' W 309 FEET, THENCE N 6°55' E 141 FEET, THENCE N 0°34' W 1238 FEET TO THE POINT OF ENDING.
TOTAL LENGTH OF DRAIN BEING 3900 FEET
THE BASIS OF THIS DESCRIPTION WAS THE OTTAWA COUNTY GIS MAPPING SYSTEM AND IS SUBJECT TO ITS ACCURACY

**WILDWOOD SPRINGS No. 5 DRAIN
DRAINAGE DISTRICT
DRAINAGE DISTRICT DESCRIPTION
MAY 24, 2019**

THAT PART OF SECTIONS 4, 5, 8 AND 9, TOWNSHIP 8 NORTH, RANGE 16 WEST, SPRING LAKE TOWNSHIP, OTTAWA COUNTY, MICHIGAN, MORE PARTICULARLY DESCRIBED AS:
BEGINNING AT A POINT ON THE SOUTH LINE OF SAID SECTION 5 A DISTANCE OF 1448 FEET WEST FROM THE SOUTHEAST CORNER OF SAID SECTION 5, THENCE N 13°05' E 587 FEET, THENCE N 44°29' E 292 FEET, THENCE N 3°35' E 176 FEET, THENCE N 38°24' W 84 FEET, THENCE N 28°43' W 179 FEET, THENCE N 35°45' W 149 FEET, THENCE N 35°12' W 111 FEET, THENCE N 53°02' W 108 FEET, THENCE N 36°07' W 131 FEET, THENCE N 35°56' W 42 FEET, THENCE N 47°08' W 214 FEET, THENCE N 58°29' W 43 FEET, THENCE N 55°28' W 275 FEET, THENCE N 25°46' W 50 FEET, THENCE N 34°36' W 79 FEET, THENCE N 0°19' E 235 FEET, THENCE EAST 146 FEET, THENCE SOUTH 50 FEET, THENCE EAST 840 FEET, THENCE NORTH 340 FEET, THENCE EAST 450 FEET, THENCE S 3°42' W 150 FEET, THENCE S 90°0' E 217 FEET, THENCE S 1°30' W 150 FEET, THENCE EAST 164 FEET, THENCE S 20°56' E 318 FEET, THENCE S 1°15' E 629 FEET, THENCE S 33°43' E 527 FEET, THENCE S 39°48' E 590 FEET, THENCE S 12°24' E 343 FEET, THENCE S 62°57' E 141 FEET, THENCE S 3°16' W 274 FEET, THENCE S 45°31' E 305 FEET, THENCE S 43°01' E 188 FEET, THENCE S 36°02' E 188 FEET, THENCE S 84°52' E 127 FEET, THENCE S 68°11' E 114 FEET, THENCE S 4°04' W 523 FEET, THENCE S 4°01' W 1334 FEET, THENCE S 3°06' W 597 FEET, THENCE N 46°40' W 42 FEET, THENCE N 78°39' W 164 FEET, THENCE S 68°33' W 531 FEET, THENCE N 33°49' W 584 FEET, THENCE S 80°40' W 218 FEET, THENCE N 72°17' W 131 FEET, THENCE N 29°41' W 219 FEET, THENCE S 62°52' W 185 FEET, THENCE N 54°04' W 353 FEET, THENCE N 81°59' W 91 FEET, THENCE N 83°50' W 149 FEET, THENCE N 88°06' W 107 FEET, THENCE N 44°0' W 207 FEET, THENCE N 80°29' W 303 FEET, THENCE N 82°54' W 152 FEET, THENCE N 61°45' W 63 FEET, THENCE N 68°34' W 89 FEET, THENCE N 74°44' W 193 FEET, THENCE N 72°51' W 42 FEET, THENCE N 68°31' W 45 FEET, THENCE N 59°18' W 62 FEET, THENCE N 56°35' W 92 FEET, THENCE N 42°05' W 139 FEET, THENCE N 32°01' W 46 FEET, THENCE N 25°50' W 78 FEET, THENCE N 19°33' W 245 FEET, THENCE N 32°7' W 112 FEET, THENCE N 42°19' W 73 FEET, THENCE N 48°03' W 63 FEET, THENCE N 44°50' W 34 FEET, THENCE N 47°32' W 54 FEET, THENCE N 40°41' W 42 FEET, THENCE N 31°15' W 39 FEET, THENCE N 26°21' W 21 FEET, THENCE N 20°31' W 28 FEET, THENCE N 14°20' W 30 FEET, THENCE N 08°07' W 30 FEET, THENCE N 2°15' W 23 FEET, THENCE N 1°39' E 334 FEET, THENCE N 73°8' E 218 FEET, THENCE N 40°30' E 66 FEET, THENCE N 46°42' E 89 FEET, THENCE N 17°57' W 158 FEET, THENCE S 90°0' W 57 FEET, THENCE S 77°32' W 135 FEET, THENCE N 5°16' E 283 FEET, THENCE N 37°42' E 211 FEET, THENCE N 69°23' E 313 FEET, THENCE N 89°58' E 179 FEET, THENCE N 06° 29' E 39 FEET MORE OR LESS TO THE SOUTH LINE OF SAID SECTION 5, THENCE EAST A DISTANCE OF 504 FEET TO THE POINT OF BEGINNING.
CONTAINING 292.2 ACRES MORE OR LESS.

THE BASIS OF THIS DESCRIPTION WAS THE OTTAWA COUNTY GIS MAPPING SYSTEM AND IS SUBJECT TO ITS ACCURACY.
PREPARED BY: ENG., INC.
DATED: 5/24/19

- LEGEND**
- = WILDWOOD SPRINGS DRAIN DRAINAGE DISTRICT BOUNDARY
 - = WILDWOOD SPRINGS DRAIN CENTERLINE
 - = EXISTING PRIVATE WATERCOURSE
 - = SECTION LINE OR QUARTER SECTION LINE
 - = PROPERTY LINE
 - 14 = SECTION NUMBER
 - = EXISTING CORPORATE LIMITS

**DRAINAGE DISTRICT BOUNDARY
& ROUTE AND COURSE EXHIBIT**

NO.	REVISIONS	DATE	BY

4063 Grand Oak Drive Suite A109
Lansing, MI 48911
517.867.1100

16930 Robbins Road Suite 105
Grand Haven, MI 49417
616.743.7070

engdol.com



JOE BUSH
OTTAWA COUNTY WATER RESOURCES COMMISSIONER

WILDWOOD SPRINGS No. 5 DRAIN DRAINAGE DISTRICT
PART OF SECTION 4, 5, 8 & 9 OF SPRING LAKE TWP, R16W, T8N, OTTAWA COUNTY, MICHIGAN

PROJECT NO.
19003

SHEET NO.