



**County of Ottawa**  
*Office of the Water Resources Commissioner*

**Joe Bush**  
*Commissioner*

**Shaun McLarty**  
*Chief Deputy*

12220 Fillmore St, Room 141, West Olive, MI 49460

Ph. (616) 994-4526

Email [waterresourcescommissioner@miottawa.org](mailto:waterresourcescommissioner@miottawa.org)

## **NOTICE OF DRAIN MAINTENANCE**

**June 14, 2024**

This notice is to inform you that a maintenance contract has been approved for the **Knowlton Intercounty Drain**. The contractor will be starting work within the next two weeks.

The drain maintenance may include **brush/tree removal and culvert removal**. Any debris removed from the drain will be cut into manageable pieces and stacked in neat piles within the drain easement. If you would like the debris removed or placed in specific areas, it is your responsibility to make arrangements with the contractor and pay the associated costs directly. The contractor will restore all disturbed areas created as a result of the maintenance performed.

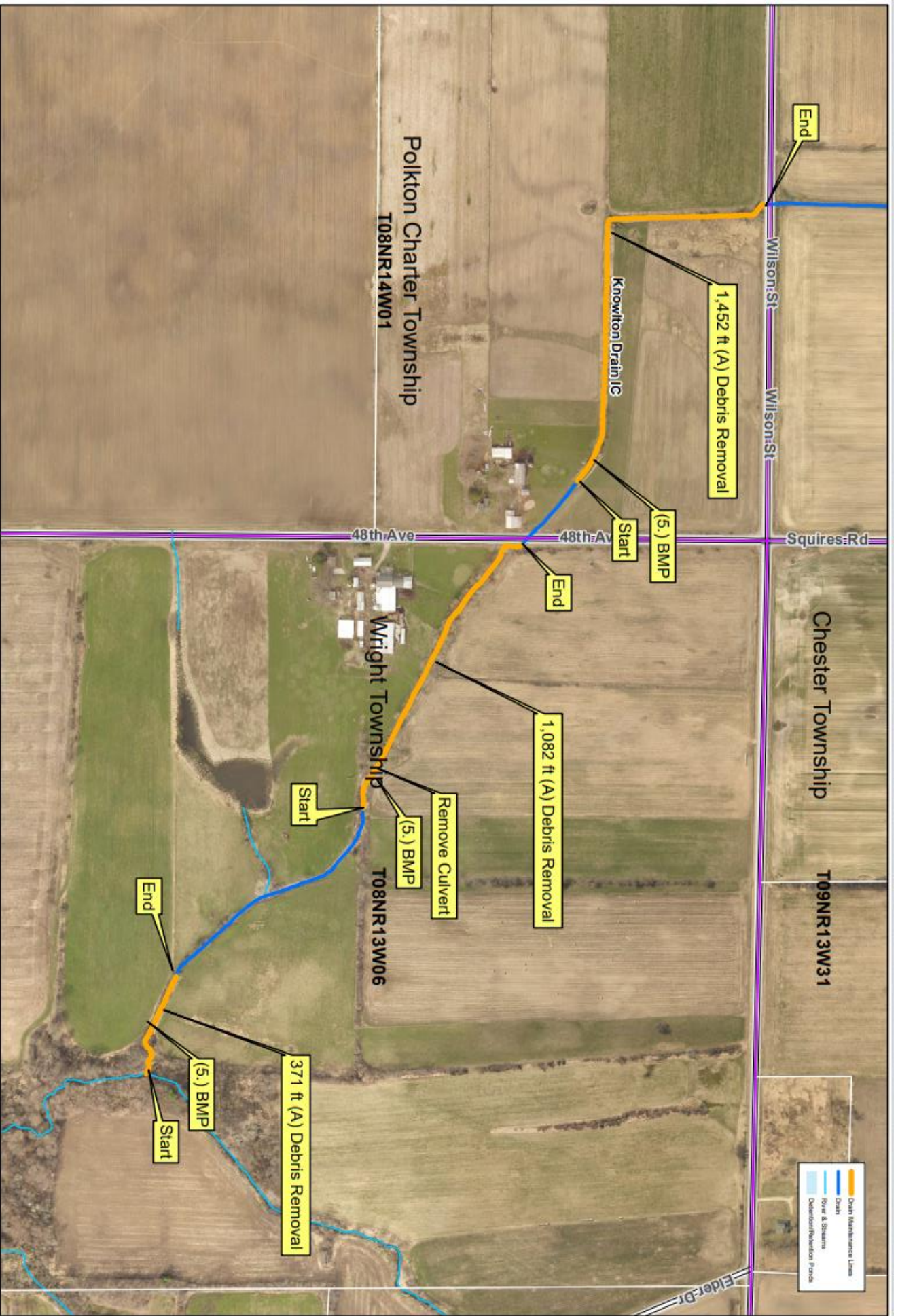
Please remove any fences, play sets or structures that are located within the drain easement as soon as possible. Also, make sure that any invisible dog fence, underground sprinkling, sump lines/tile outlet, property corner pins, etc. are marked. Care will be taken to avoid damage to anything within the drain easement; however, contractors will not be held responsible for something damaged that was not moved or marked.

Your cooperation is always appreciated in these matters. Should you have any questions, concerns, or input that you would like us to consider, feel free to contact us at 616-994-4526 or email [waterresourcescommissioner@miottawa.org](mailto:waterresourcescommissioner@miottawa.org).

Thank You,

Emily Grasc  
Drain Inspector

cc: Volker Crane Services (269) 838-9710  
Polkton Township  
Wright Township



**Ottawa County Water Resources**  
**Knowlton IC Drain Clean Out**  
 BMP: (5.) Perimeter Sediment Control Measures

Section: Polkton Sec 01 WrightSec 06  
 Length: 2905 ft Cleanout  
 Drain length: 6,800 ft  
 Easement: 25-5G ft  
 Soil-Type: Loam