

September 2020  
2200645

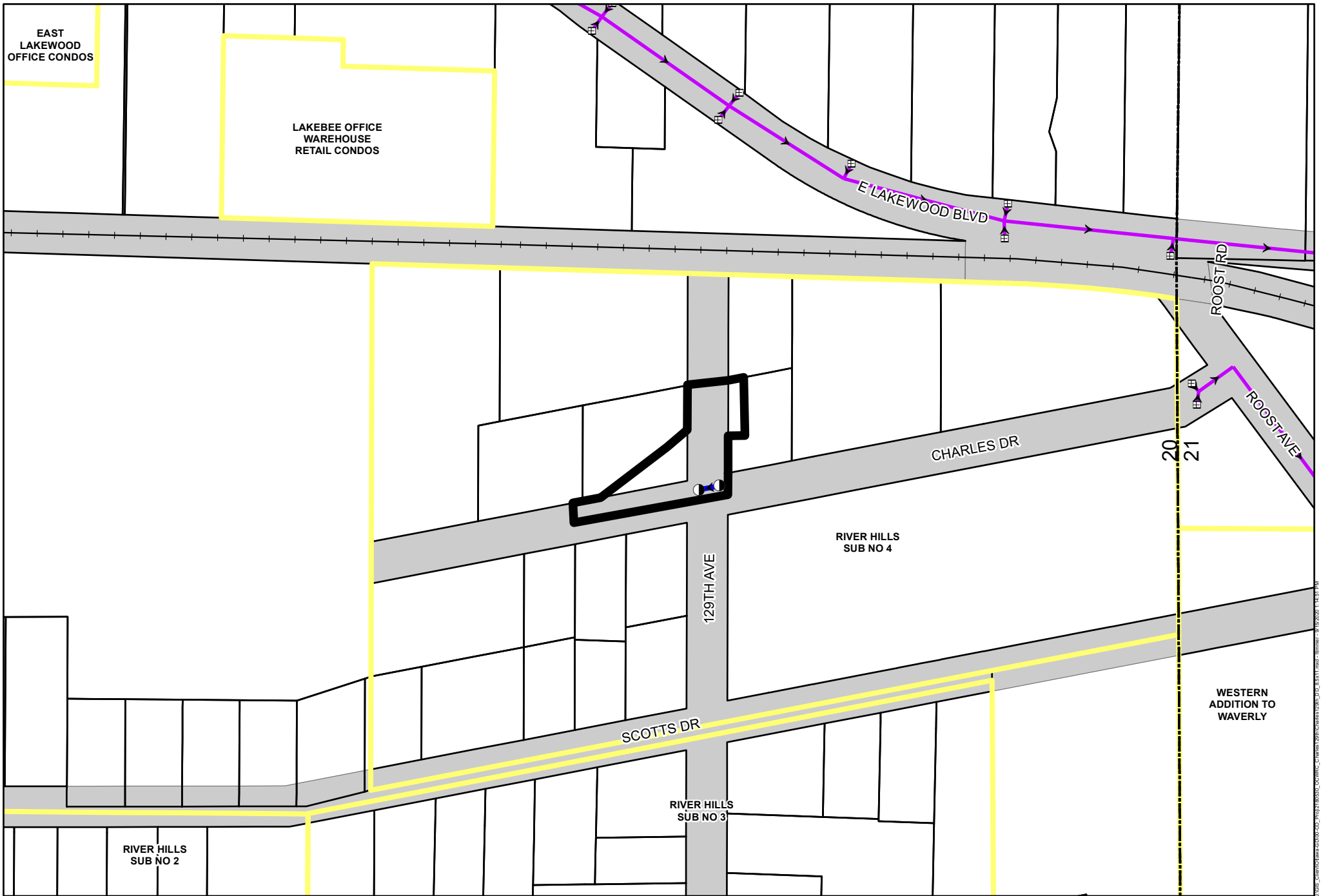
**129<sup>TH</sup> AND CHARLES DRAIN  
TENTATIVE DRAINAGE DISTRICT**

(Section 20 of Holland Charter Township, Ottawa County, Michigan)

*See attached exhibit "Exhibit B: 129<sup>th</sup> and Charles Drain Tentative Drainage District" dated September 2020 (total 1 sheet).*

All lands, generally described as follows in Holland Charter Township, Ottawa County, Michigan:

Parcels within the northeast quarter of the northeast quarter (400) of section 20. These parcels are also within the River Hills Subdivision No. 4.



EAST LAKEWOOD OFFICE CONDOS

LAKEBEE OFFICE WAREHOUSE RETAIL CONDOS

E LAKEWOOD BLVD

CHARLES DR

129TH AVE

SCOTTS DR

ROOST RD

ROOST AVE

RIVER HILLS SUB NO 4




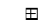




RIVER HILLS SUB NO 3

RIVER HILLS SUB NO 2

WESTERN ADDITION TO WAVERLY

20  
21

**LEGEND**

-  129TH AND CHARLES DRAINAGE DISTRICT
-  129TH AND CHARLES STORM SEWER
-  129TH AND CHARLES LEACHING BASINS
-  CATCH BASIN
-  STORM SEWER
-  RIGHT OF WAY
-  PLAT BOUNDARIES
-  SECTION BOUNDARY



SCALE: 1" = 200'

OTTAWA COUNTY WATER RESOURCES COMMISSIONER  
 HOLLAND CHARTER TOWNSHIP  
**EXHIBIT B: 129TH & CHARLES DRAIN**  
**TENTATIVE DRAINAGE DISTRICT EXHIBIT**

Prein&Newhof  
 SEPTEMBER 2020  
 2200645