



December 2, 2021

Bay Meadows Drain Board of Determination

Bay Meadows Drain

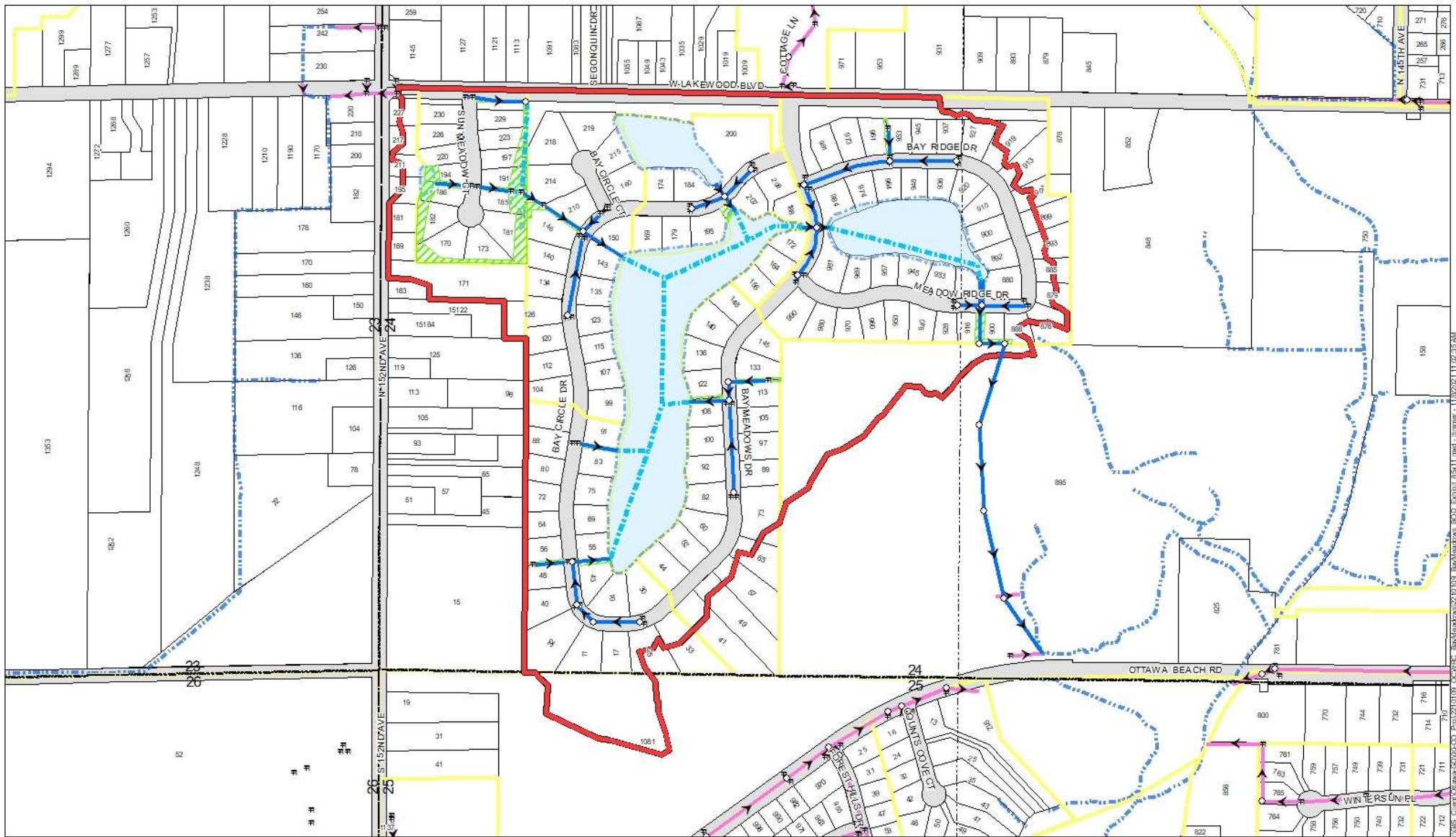
- The existing storm water drain system is without authorized local and county governmental jurisdiction and administrative, procedural, and funding mechanisms to address current/future needs for maintenance and improvements
- Property owners filed Petition to Establish a Drainage District on September 16, 2021
- Michigan Drain Code requires a Board of Determination Meeting



Bay Meadows Drain Preliminary Engineering

- Review utility record drawings and plat maps
 - Bay Meadows (1989)
 - Bay Meadows No. 2 (1990)
 - Bay Meadows No. 3 (1990)
 - Bay Meadows No. 4 (1991)
 - Bay Meadows No. 5 (1993)
 - Sunflower (1995)
- Delineate the drainage district (watershed) boundary using county GIS contour data and aerials
- Visit site to locate drain infrastructure and confirm drainage patterns





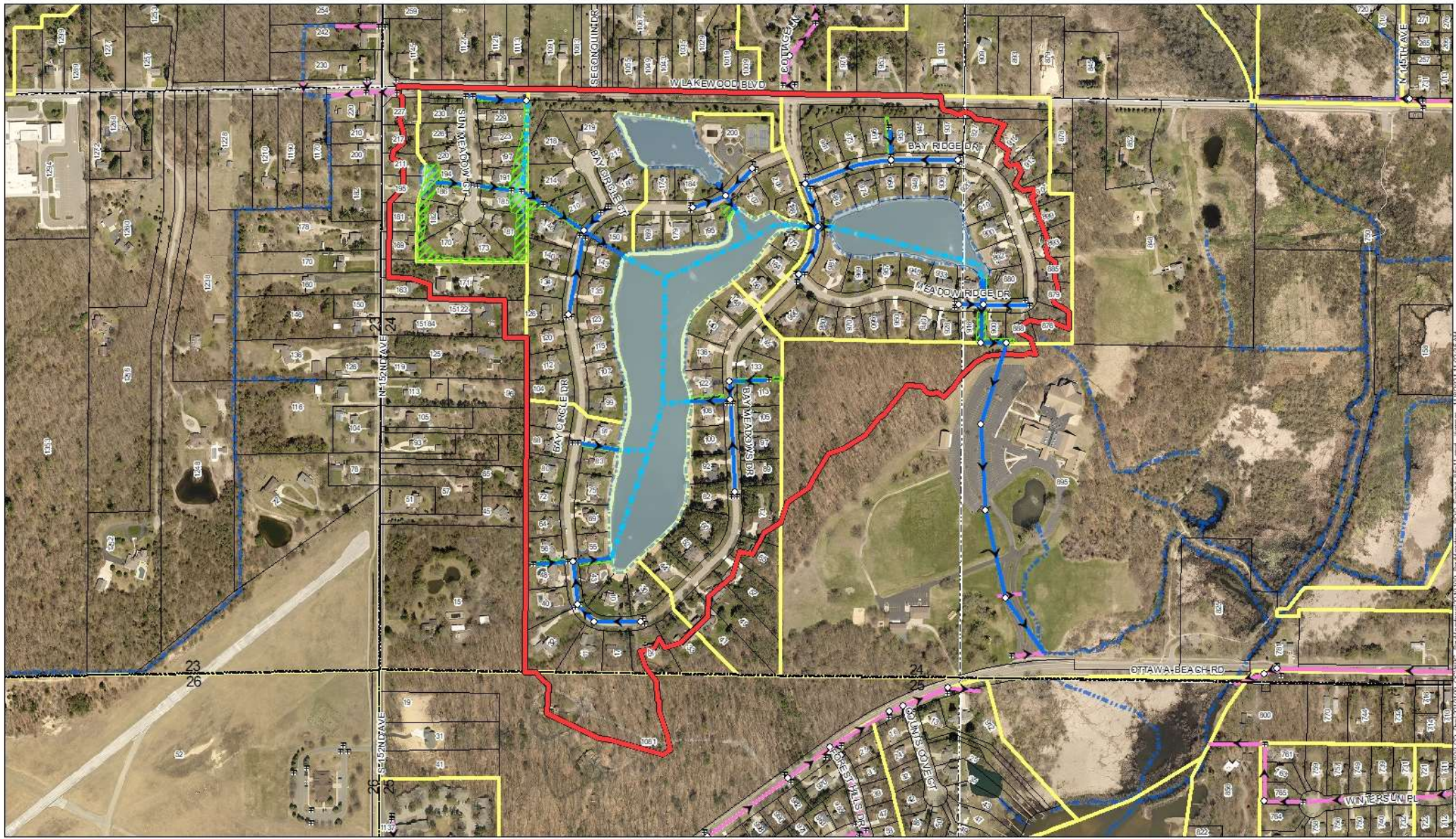

 SCALE: 1" = 400'

- LEGEND**
- | | |
|---|--|
|  BAY MEADOWS DRAIN DRAINAGE DISTRICT |  EASEMENT |
|  BAY MEADOWS DETENTION PONDS |  MANHOLE |
|  BAY MEADOWS DRAIN - STORM SEWER |  CATCH BASIN |
|  BAY MEADOWS DRAIN - POND FLOW |  SECTION BOUNDARY |
|  OTHER STORM SEWER |  PLAT BOUNDARIES |
|  OTHER WATERCOURSES |  RIGHT OF WAY |

OTTAWA COUNTY WATER RESOURCES COMMISSIONER
 PARK TOWNSHIP SECTIONS 24 & 25
BAY MEADOWS DRAIN
DRAINAGE DISTRICT AND ROUTE AND COURSE
Prein&Newhof
 2/10/18

Bay Meadows Drain District and Route and Course

Prein&Newhof



LEGEND

- ▬ BAY MEADOWS DRAIN DRAINAGE DISTRICT
- ▬ BAY MEADOWS DETENTION PONDS
- ▬ BAY MEADOWS DRAIN - STORM SEWER
- ▬ BAY MEADOWS DRAIN - POND FLOW
- ▬ OTHER STORM SEWER
- ▬ OTHER WATERCOURSES
- ▬ EASEMENT
- MAN-HOLE
- ⊠ CATCH BASIN
- ▬ SECTION BOUNDARY
- ▬ PLAT BOUNDARIES


SCALE: 1" = 400'

OTTAWA COUNTY WATER RESOURCES COMMISSIONER
 PARK TOWNSHIP SECTIONS 24 & 25
**BAY MEADOWS DRAIN
 DRAINAGE DISTRICT AND ROUTE AND COURSE**
Prein&Newhof
 2/10/15

Bay Meadows Drain District and Route and Course

Prein&Newhof

Bay Meadows Drain– Drainage Issues

- Sinkholes have occurred in the street near catch basins and it is possible sinkholes have occurred near backyard catch basins
- Sediment accumulating at outlets
- Possible blockage of flow between north pond near clubhouse and large south pond.
- Blockages in the past at the control structure outlet near Meadow Ridge Drive
- Sediment/partial blockage of an outlet for the Sunflower plat



Bay Meadows Drain– BOD Conclusion

- Public Testimony
- Board to determine necessity of petition based on public health, welfare, and/or convenience after hearing testimony
 - If deemed necessary by the board, then the existing system will become a county drain.
 - If deemed not necessary by the board, then no further action will occur.



Bay Meadows Drain – Next Steps

- If the drain is deemed necessary by the board and during public testimony or following public testimony OCWRC is made aware of drainage issues with the existing system, then...
 - OCWRC will have P&N review feasible projects to improve drainage
 - Design Process for Drainage Maintenance/Improvements
 - Review feasible projects
 - Select project
 - Project design and survey
 - Easement acquisition
 - Project bid and construction
 - Day of Review of Apportionments
 - Assessments will be made to Ottawa County, Ottawa County Road Commission, Park Township, and property owners.
- If drainage issues identified in previous slide are determined to be insignificant by the parties involved (OCWRC, property owners/association), then no project will occur.
- If drainage issues occur in the future, then...
 - A petition is needed (by the township or the residents of the drainage district) to maintain the county drain if the project costs more than \$5,000 per mile of drain (per Drain Code).
 - Assessments for all future projects will be made to Ottawa County, Ottawa County Road Commission, Park Township, and property owners.

