

# BRIDLEWOOD DRAIN

---

## Board of Determination

Ottawa County Water  
Resources Commissioner

Joe Bush

July 6, 2022

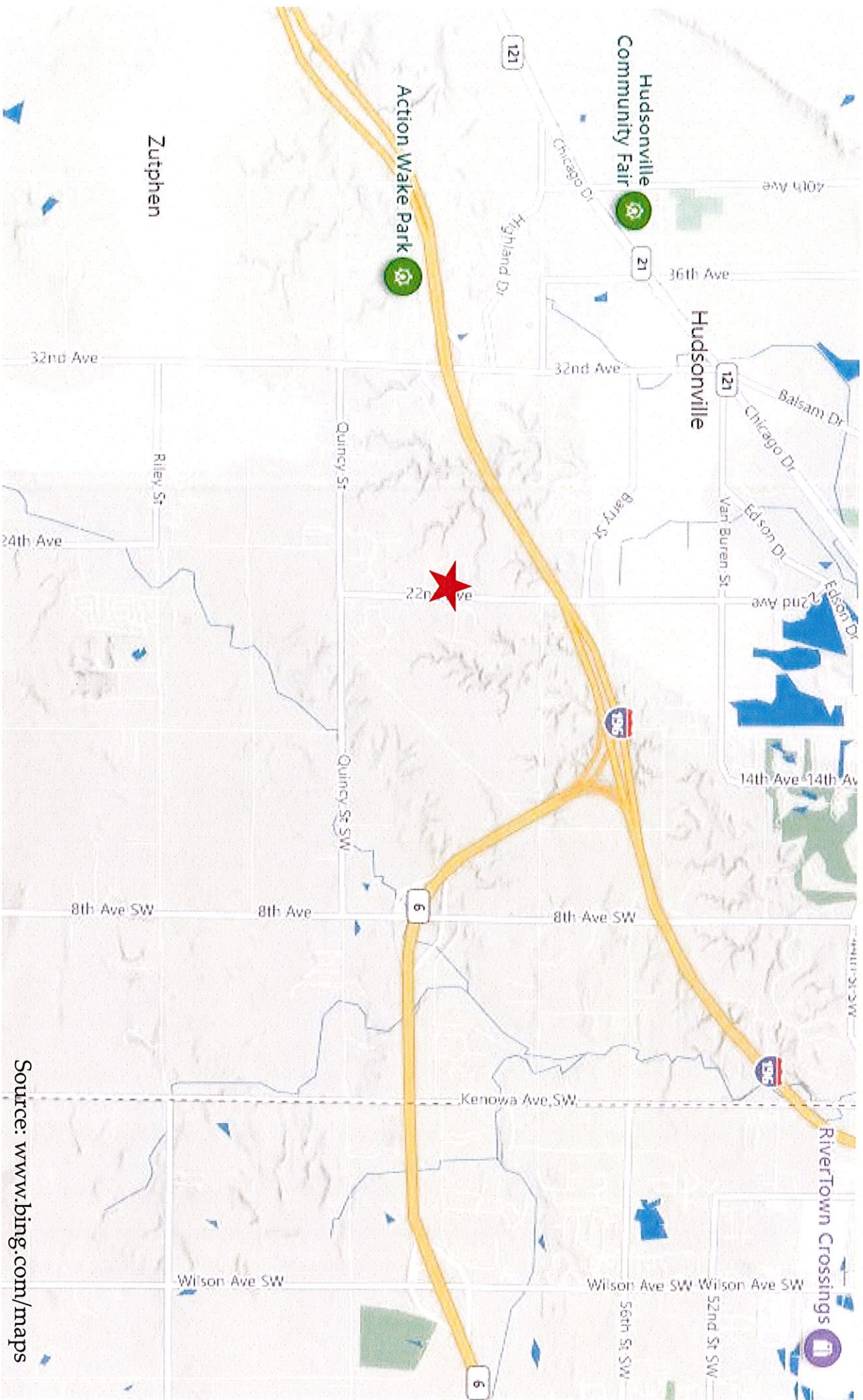


# Outline

---

- Location
- Background/History
- Drainage District Boundary
- Photographs
- Observations/Next Steps
- Questions

# Location Map



Source: [www.bing.com/maps](http://www.bing.com/maps)

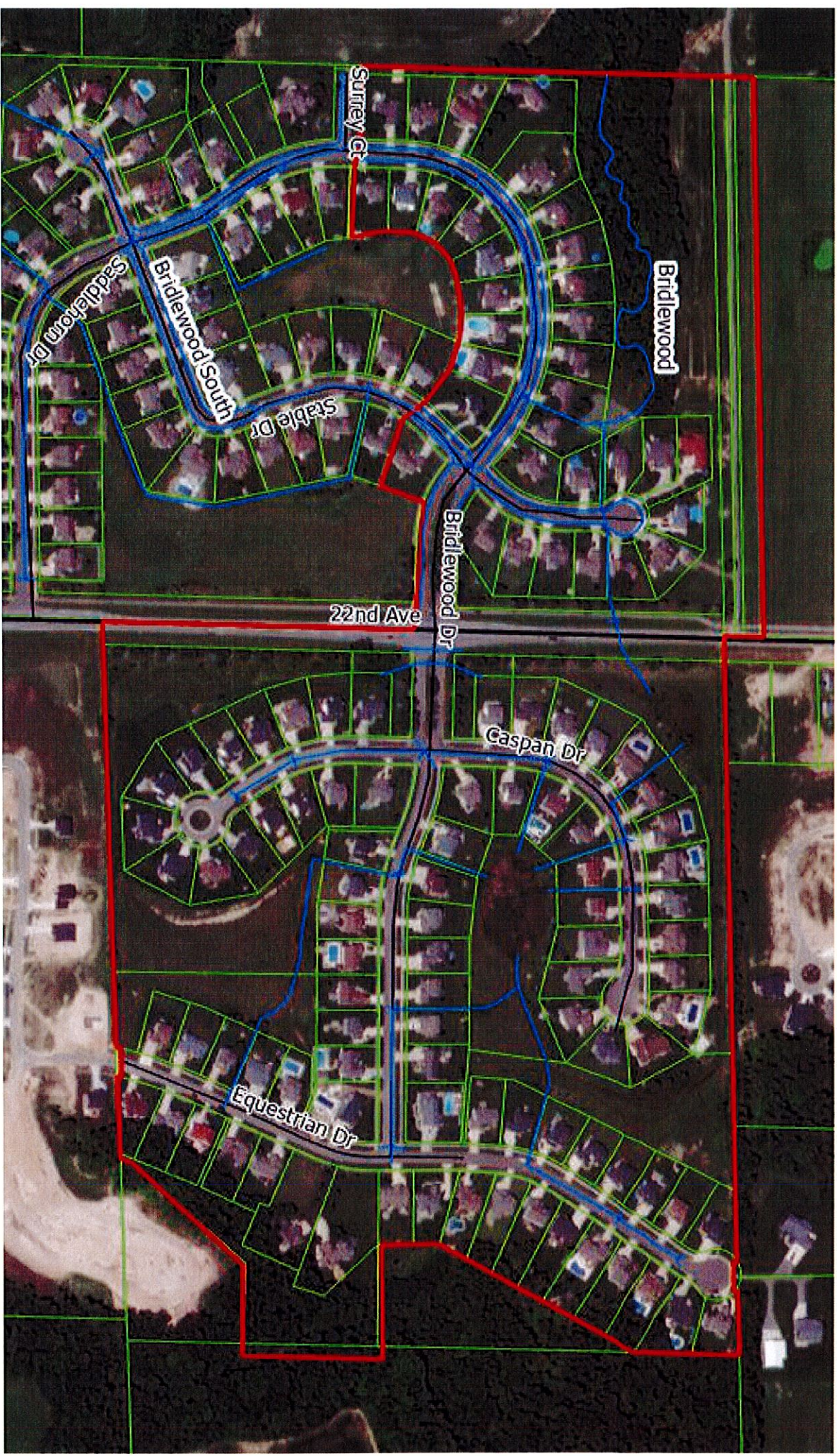
# Background/History

---

- 433 Agreement - 2001
- Watershed: ~79.9 Acres/0.13 Sq. Mi.
- ~137 Parcels
- Drain Length: 11,900 Ft. / ~2.3 Mi.
- Land Use:

Residential

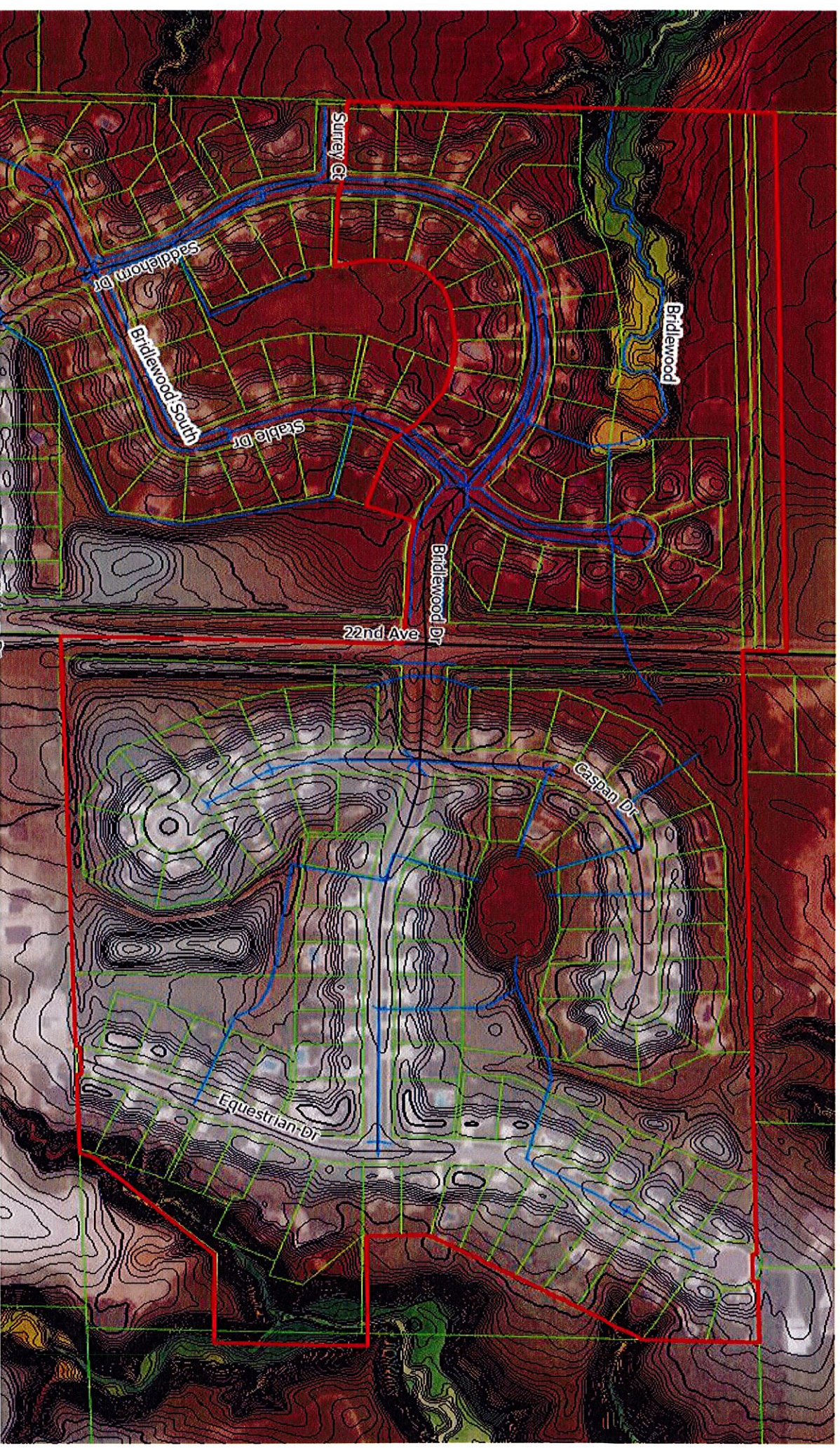
# Watershed Boundary



# General Flow Pattern



# Watershed Boundary – LiDAR



# Slight Woody Debris in Drain





# Bank Erosion in Drain



# Basin North of Bridlewood Drive & West of Stable Drive



# Low Spot Behind 4493 Stable Drive



# Catch Basin Behind 4493 Stable Drive



# Outlet of Pond NW of Caspian Drive



# Outlet of Pond NW of Caspian Drive



# Outlet of Pond SE of Caspian Drive

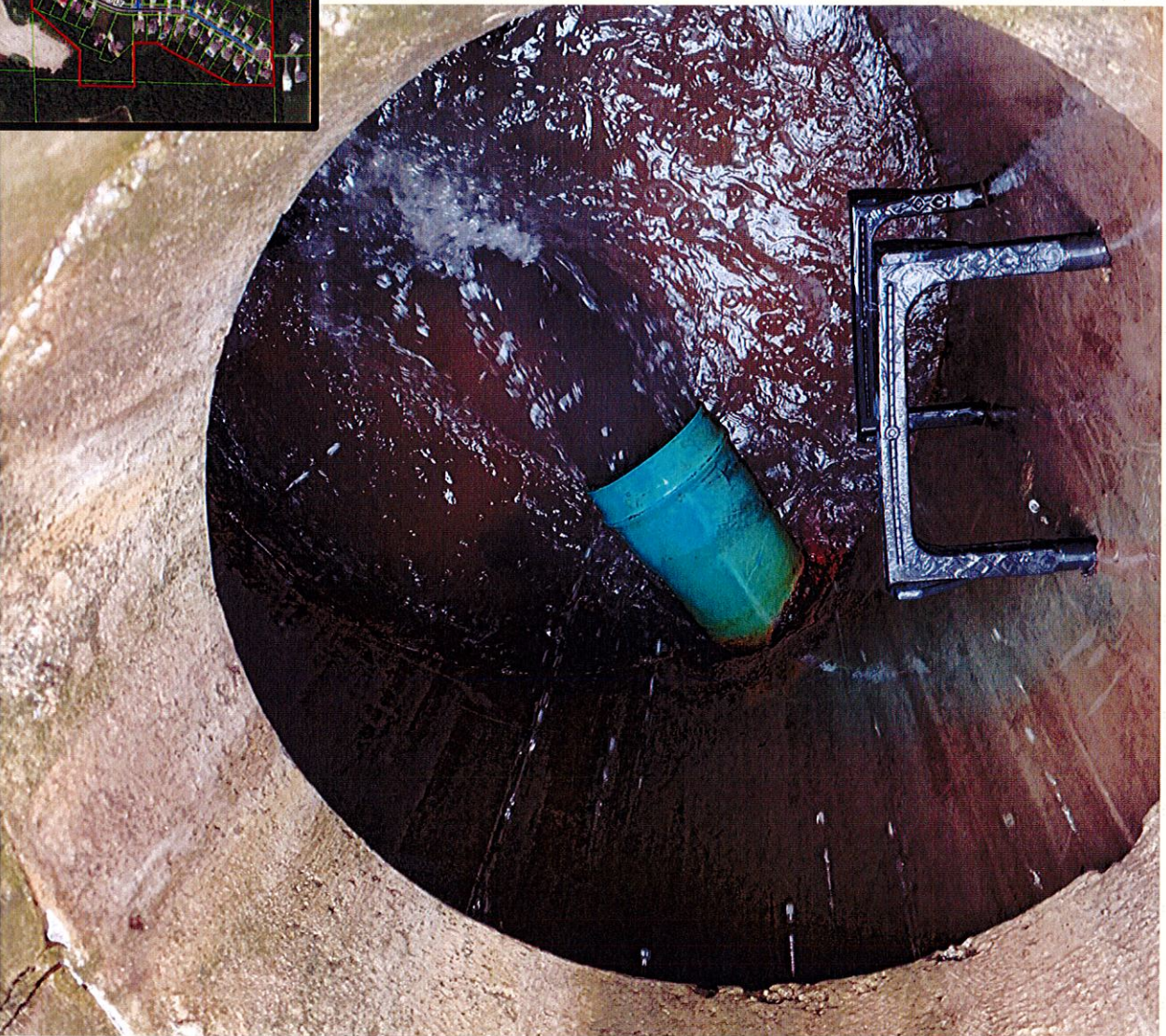


# Outlet of Pond SE of Caspian Drive





# Outlet of Pond SE of Caspian Drive



# Outlet of Pond SE of Caspian Drive



# Observations

---

- Open Channel Erosion and Debris
- Diminished Functionality of Detention Basins
- Saturated Yard Areas

# Next Steps – If Not Necessary

---

- No Project
- No New Petition on the Bridlewood Drain for a Period of One Year

# Next Steps – If Necessary

---

- Engineering/Final Design
- Property Acquisition/Easements
- Permitting
- Bidding
- Day of Review
- Construction

# Questions

---

Ottawa County Water  
Resources Commissioner

Joe Bush  
(616) 994-4530

Spicer Group, Inc.  
Paul Forton, P.E.  
Noah Szott, P.E.

