

# BRIDLEWOOD SOUTH DRAIN

---

## Board of Determination

Ottawa County Water  
Resources Commissioner

Joe Bush

July 6, 2022

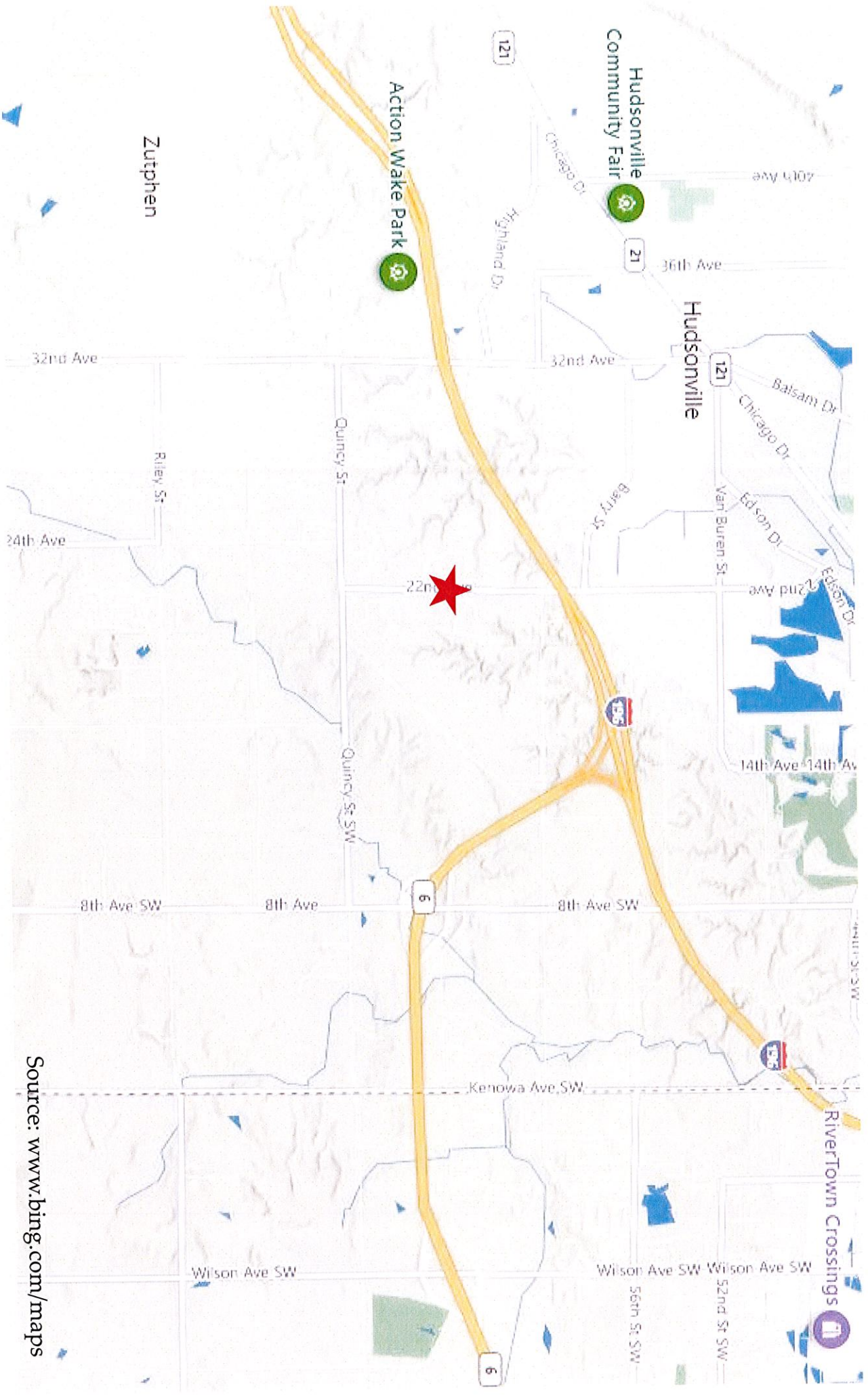


# Outline

---

- Location
- Background/History
- Drainage District Boundary
- Photographs
- Observations/Next Steps
- Questions

# Location Map



Source: [www.bing.com/maps](http://www.bing.com/maps)

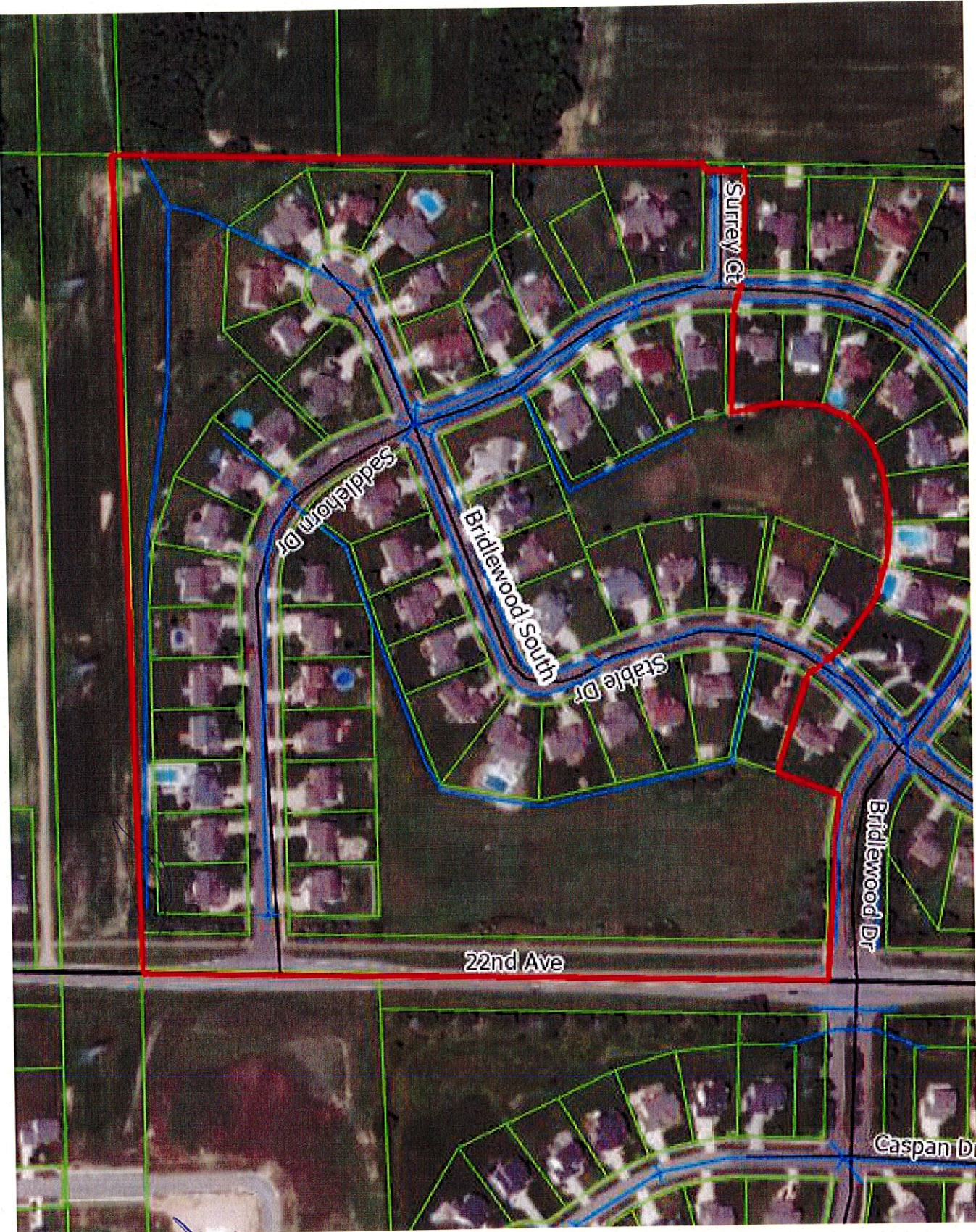
# Background/History

---

- 433 Agreement - 2002
- Watershed: ~34.76 Acres/0.05 Sq. Mi.
- ~57 Parcels
- Drain Length: 8,400 Ft. / ~1.6 Mi.
- Land Use:

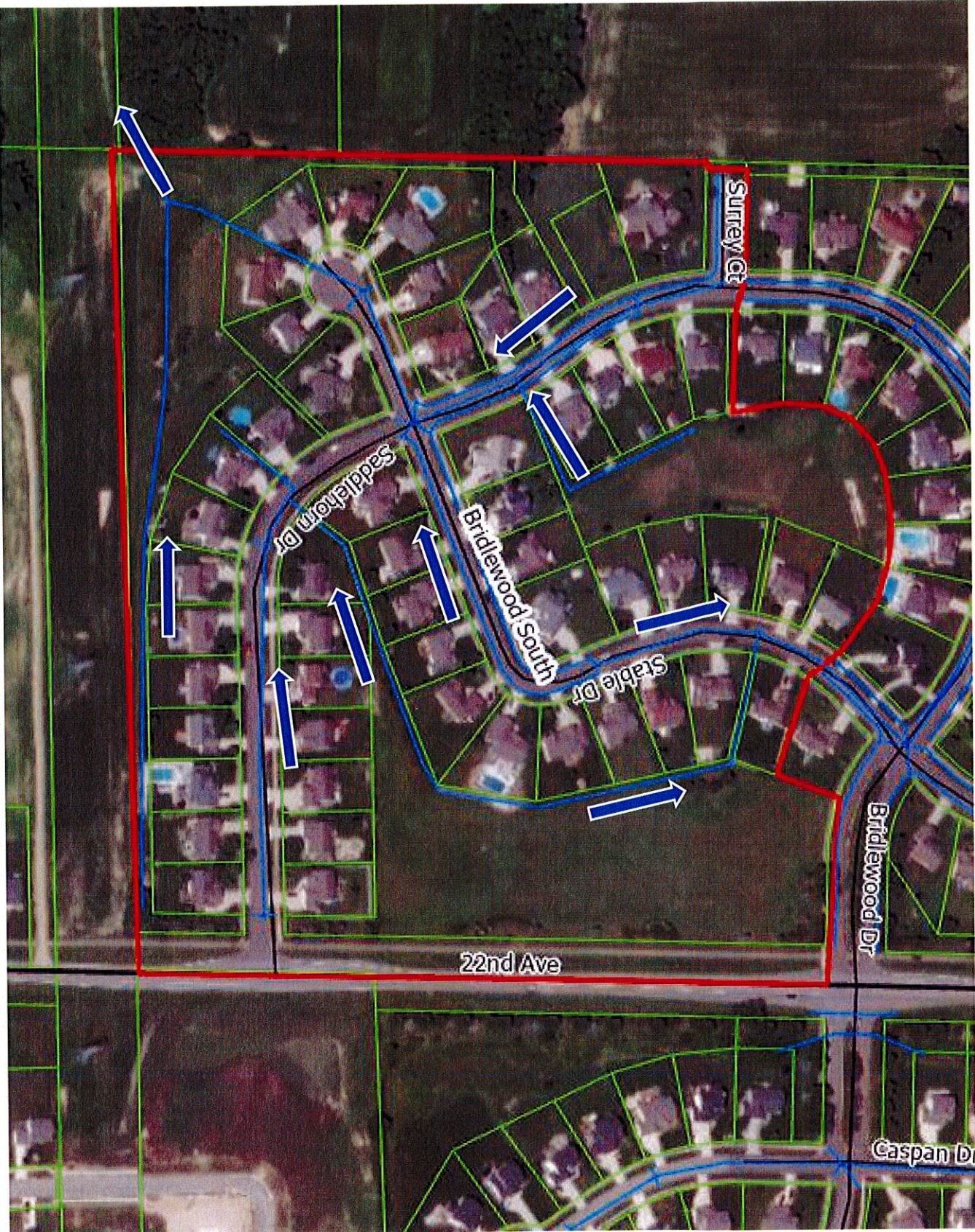
Residential

# Watershed Boundary

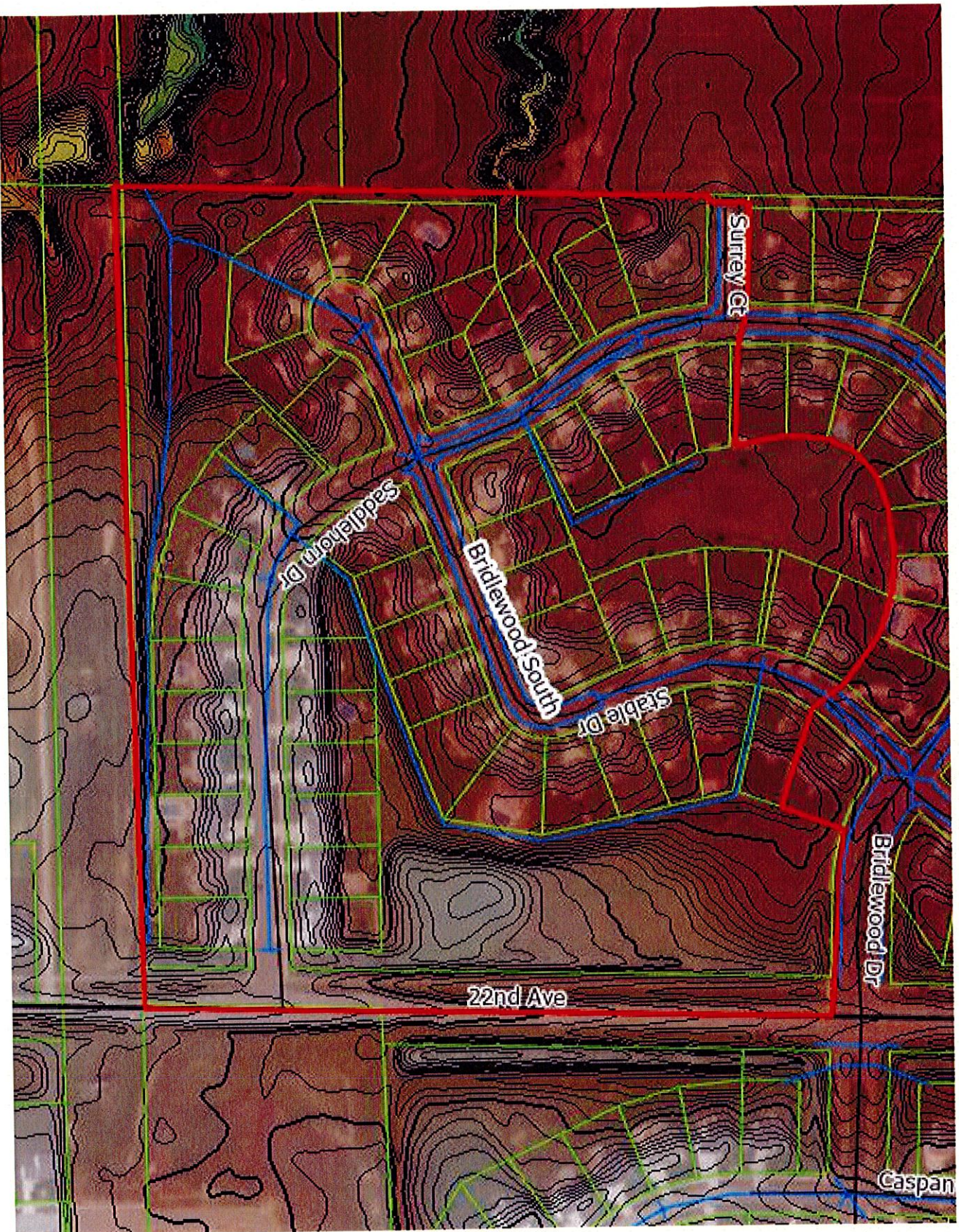


AS

# General Flow Pattern



# Watershed Boundary - LIDAR



# Outlet of Basin SW of Saddlehorn Drive

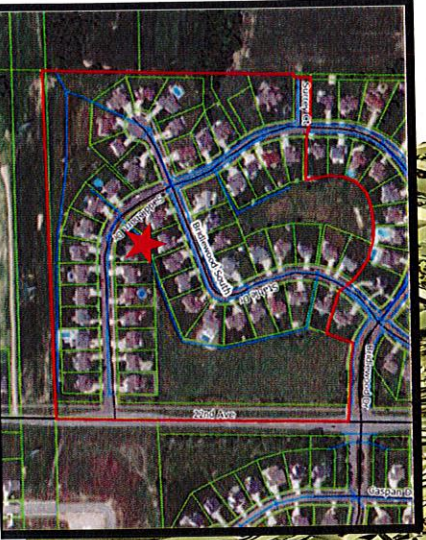




# View of Basin SW of Saddlehorn Drive



# Drain Between Saddlehorn Drive & Stable Drive



# Catch Basin Behind 4452 Saddlehorn Drive





# Low Area Behind 2333 Stable Drive



# Observations

---

- Diminished Functionality of Detention Basin
- Saturated Yard Areas
- Reported Flooding and Standing Water

# Next Steps – If Not Necessary

---

- No Project
- No New Petition on the Bridlewood South Drain for a Period of One Year

# Next Steps – If Necessary

---

- Engineering/Final Design
- Property Acquisition/Easements
- Permitting
- Bidding
- Day of Review
- Construction



# Questions

---

Ottawa County Water  
Resources Commissioner

Joe Bush

(616) 994-4530

Spicer Group, Inc.

Paul Forton, P.E.

Noah Szott, P.E.



