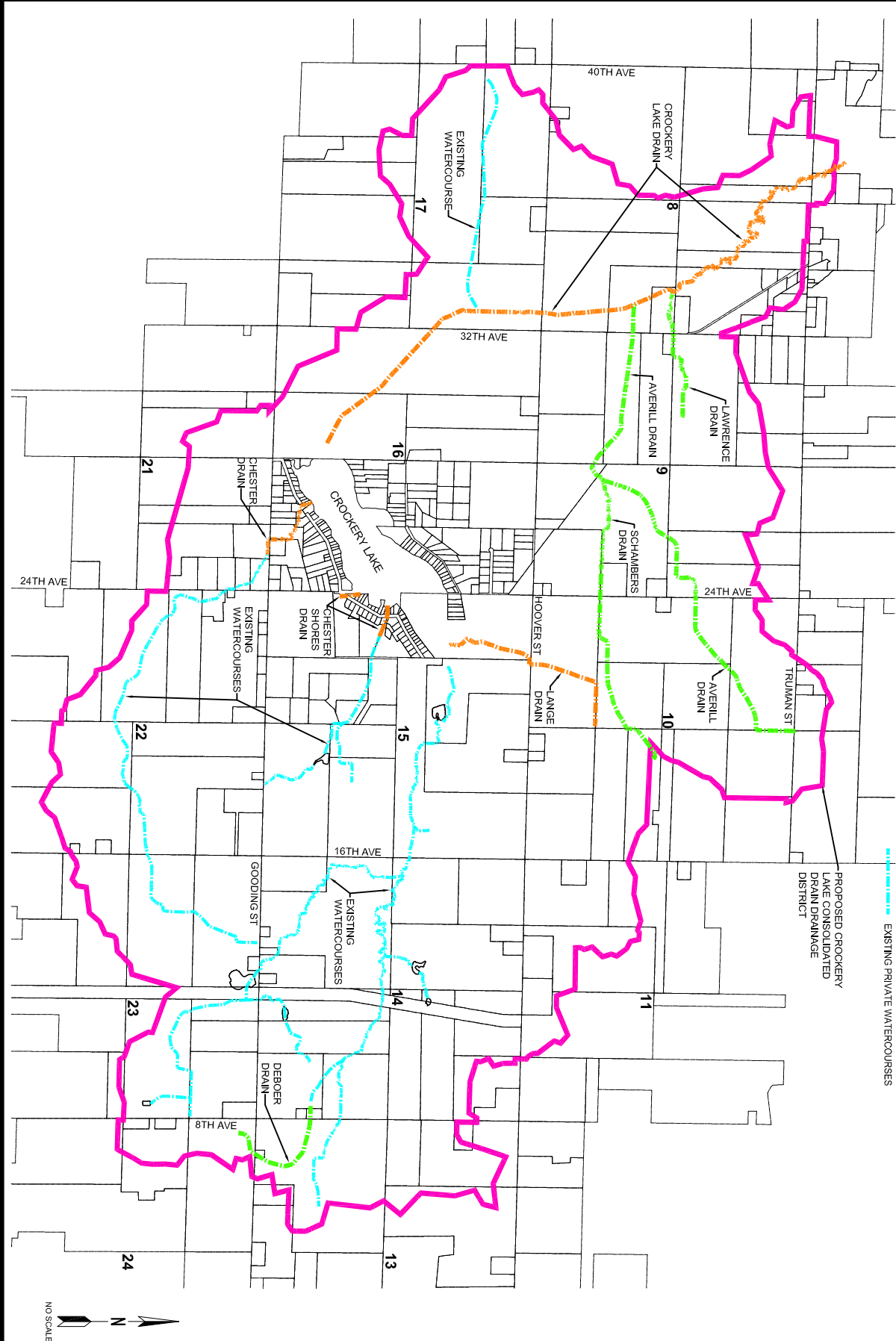




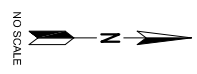
CROCKERY LAKE CONSOLIDATED DRAIN DRAINAGE DISTRICT

PART OF SECTIONS 8, 9, 10, 11, 13, 14, 15, 16, 17, 21, 22, 23 AND 24, T9N, R13W,
 CHESTER TOWNSHIP, OTTAWA COUNTY, MICHIGAN
 OTTAWA COUNTY WATER RESOURCES COMMISSIONER
JOE BUSH



- LEGEND**
- PROPOSED CROCKERY LAKE CONSOLIDATED DRAIN DRAINAGE DISTRICT
 - DRAINAGE DISTRICT BOUNDARY
 - EXISTING COUNTY DRAINS (TO BE CONSOLIDATED)
 - EXISTING COUNTY DRAINS (TO REMAIN)
 - EXISTING PRIVATE WATERCOURSES

SECTION LINE OR QUARTER SECTION LINE SECTION NUMBER



JOE BUSH
 OTTAWA COUNTY WATER RESOURCES COMMISSIONER

17051
 PROJECT NO.

CROCKERY LAKE CONSOLIDATED DRAIN DRAINAGE DISTRICT
 PART OF SECTIONS 8, 9, 10, 11, 13, 14, 15, 16, 17, 21, 22, 23 AND 24, T9N, R13W,
 CHESTER TOWNSHIP, OTTAWA COUNTY, MICHIGAN

Eng

Engineering & Surveying

4063 Grand Oak Drive
 Suite A109
 Lansing, MI 48911
 T: 517.887.1100
 F: 517.887.6335
 engdot.com

NO.	REVISIONS	BY	DATE	DRAWN	DATE
				GTC	11-30-17

DRAWING
 1 OF 1