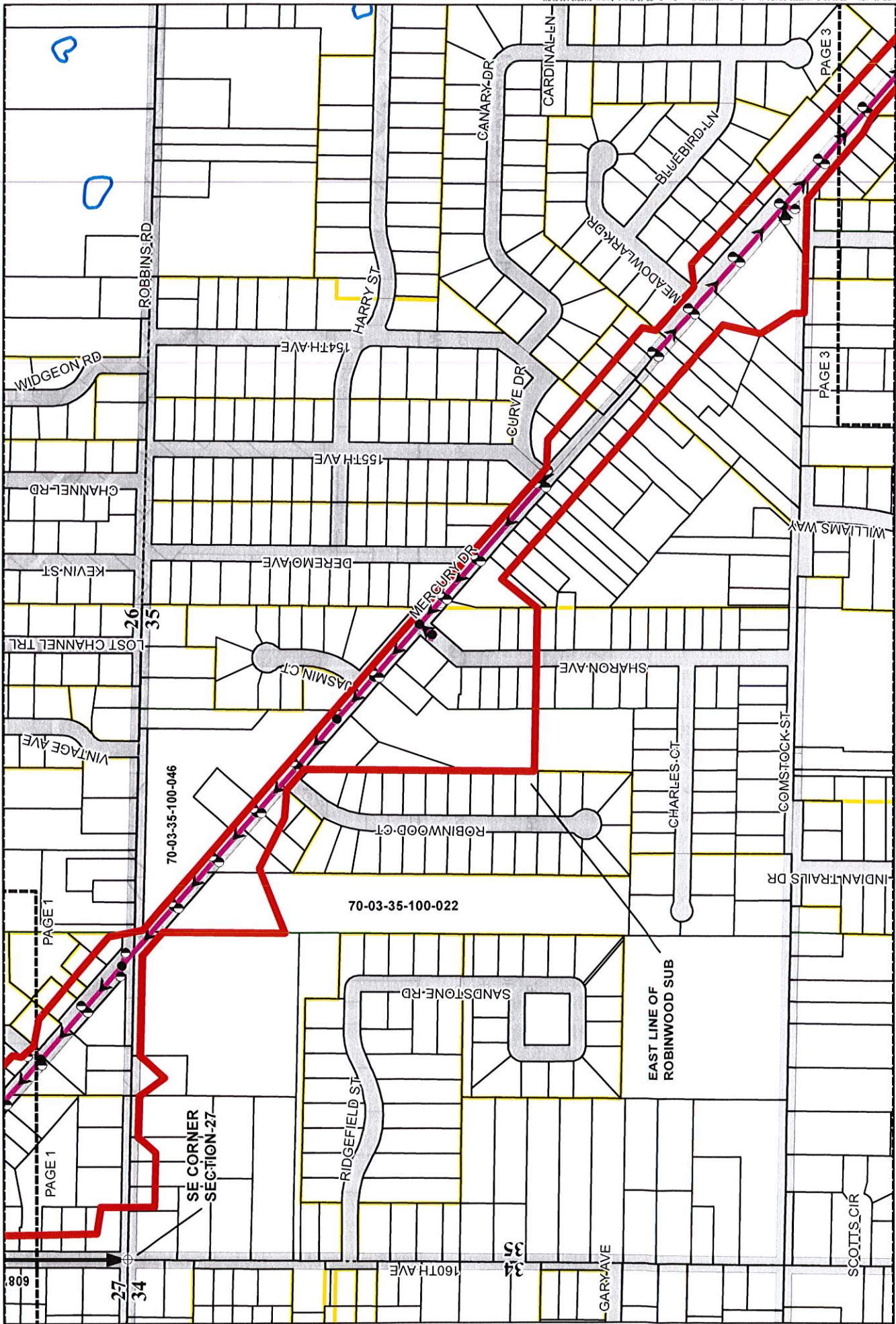


SCALE: 1" = 500'

- LEGEND**
-  PROP. MERCURY DRIVE DRAIN DRAINAGE DISTRICT
 -  JURISDICTIONAL BOUNDARIES
 -  PLAT BOUNDARY
 -  CATCH BASIN
 -  MANHOLE
 -  PROP. MERCURY DRIVE STORM SEWER
 -  RIGHT OF WAY

OTTAWA COUNTY WATER RESOURCES COMMISSIONER
 LOCATED IN SECTIONS 1, 26, 27, 35 AND 36
 CITY OF GRAND HAVEN AND GRAND HAVEN CHARTER TOWNSHIP
MERCURY DRIVE DRAIN
TENTATIVE DRAINAGE DISTRICT
 Prcain,S&Newhof
 2190523



SCALE: 1" = 500'

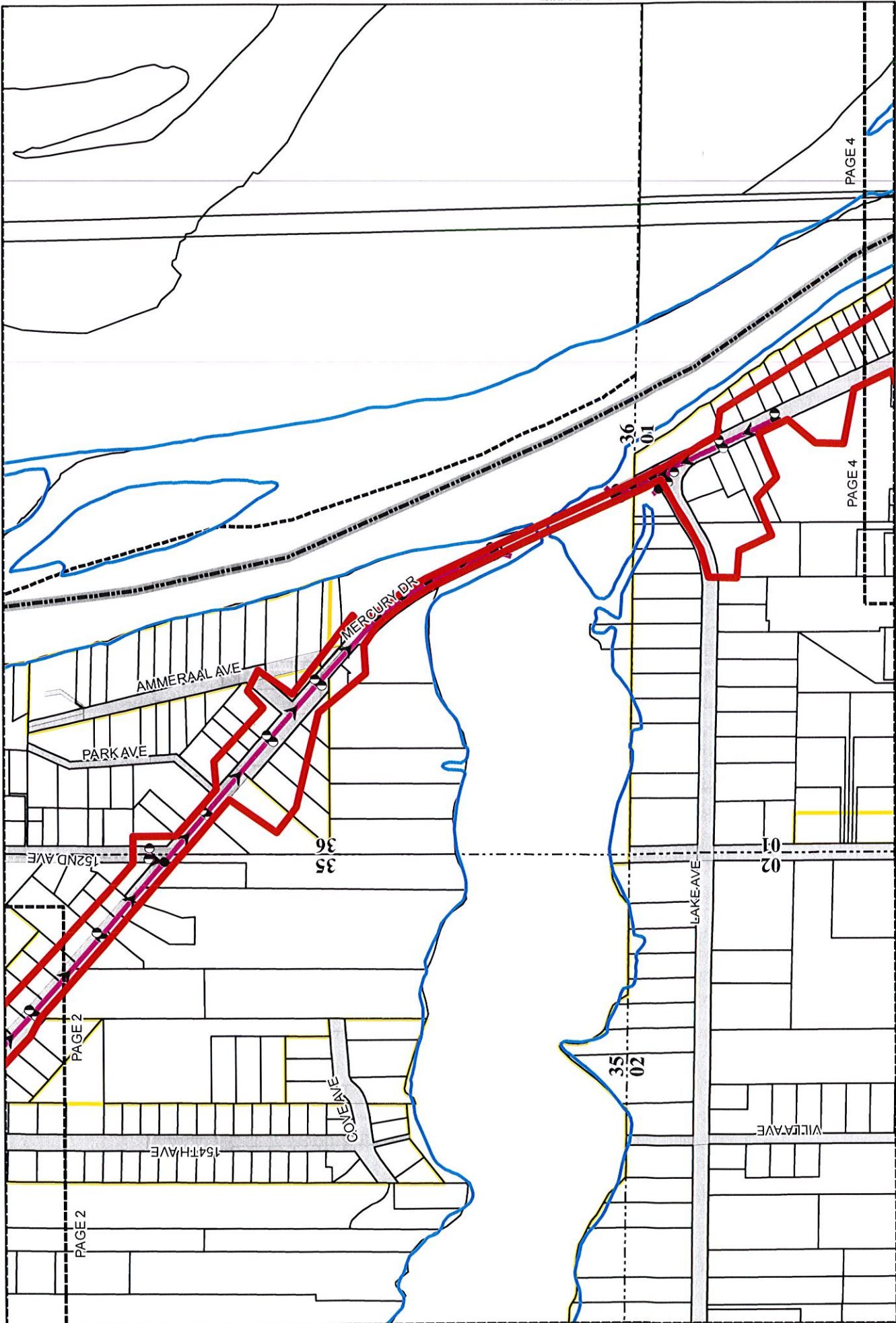
LEGEND

-  PROP. MERCURY DRIVE DRAIN DRAINAGE DISTRICT
-  CATCH BASIN
-  MANHOLE
-  PROP. MERCURY DRIVE STORM SEWER
-  JURISDICTIONAL BOUNDARIES
-  RIGHT OF WAY
-  PLAT BOUNDARY

OTTAWA COUNTY WATER RESOURCES COMMISSIONER
 LOCATED IN SECTIONS 1, 26, 27, 35, AND 36
 CITY OF GRAND HAVEN AND GRAND HAVEN CHARTER TOWNSHIP

MERCURY DRIVE DRAIN
TENTATIVE DRAINAGE DISTRICT

Prepared by: SchNewhof
 2190523

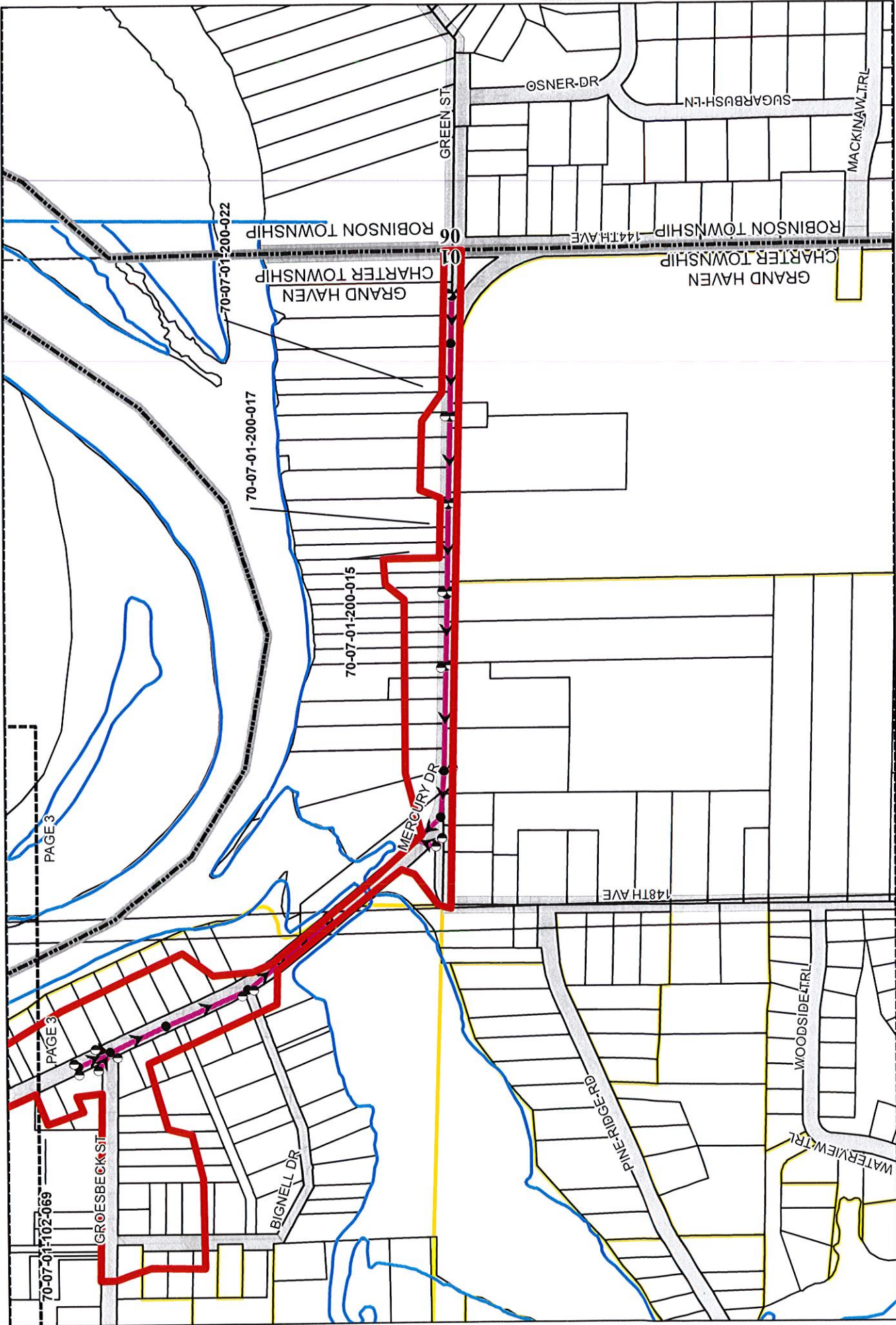


OTTAWA COUNTY WATER RESOURCES COMMISSIONER
 LOCATED IN SECTIONS 1, 26, 27, 35, AND 36
 CITY OF GRAND HAVEN AND GRAND HAVEN CHARTER TOWNSHIP
MERCURY DRIVE DRAINAGE DISTRICT
TENTATIVE DRAINAGE DISTRICT
 Fremont & Newhof
 2190523

- LEGEND**
- PROP. MERCURY DRIVE DRAINAGE DISTRICT
 - JURISDICTIONAL BOUNDARIES
 - CATCH BASIN
 - RIGHT OF WAY
 - MANHOLE
 - PLAT BOUNDARY
 - PROP. MERCURY DRIVE STORM SEWER



SCALE: 1" = 500'



PAGE 3

PAGE 3

70-07-01-102-069

70-07-01-200-022

70-07-01-200-017

70-07-01-200-015

70-07-01-102-069

OTTAWA COUNTY WATER RESOURCES COMMISSIONER
 LOCATED IN SECTIONS 1, 26, 27, 35, AND 36
 CITY OF GRAND HAVEN AND GRAND HAVEN CHARTER TOWNSHIP
MERCURY DRIVE DRAIN
TENTATIVE DRAINAGE DISTRICT
 Prunicki-Newhof
 2190523

LEGEND

- PROP. MERCURY DRIVE DRAIN DRAINAGE DISTRICT
- JURISDICTIONAL BOUNDARIES
- RIGHT OF WAY
- PLAT BOUNDARY
- CATCH BASIN
- MANHOLE
- PROP. MERCURY DRIVE STORM SEWER

SCALE: 1" = 500'

August 2019
2190523

**MERCURY DRIVE DRAIN
TENTATIVE ROUTE & COURSE**

Sections 1, 26, 27, 35, and 36 of Grand Haven Charter Township and Section 27 of the City of Grand Haven, Ottawa County, Michigan

See attached exhibit "Exhibit A: Mercury Drive Drain Tentative Route and Course" dated August 2019 (total 4 sheets).

All of the drainage facilities (including storm sewers, manholes, catch basins, and catch basin leads and excluding underdrain and sump lines) as shown in the attached exhibit and described more specifically as follows:

DRAINAGE FACILITIES

The public right-of-way of Mercury Drive from approximately 130 feet northwest from the intersection of 164th Avenue/Moreland Street to the intersection of 144th Avenue;

The public right-of-way of Pine Street from the intersection of Mercury Drive to approximately 300 feet south of the intersection of Mercury Drive;

The public right-of-way of 161st Avenue from the intersection of Mercury Drive to approximately 150 feet south of the intersection of Mercury Drive;

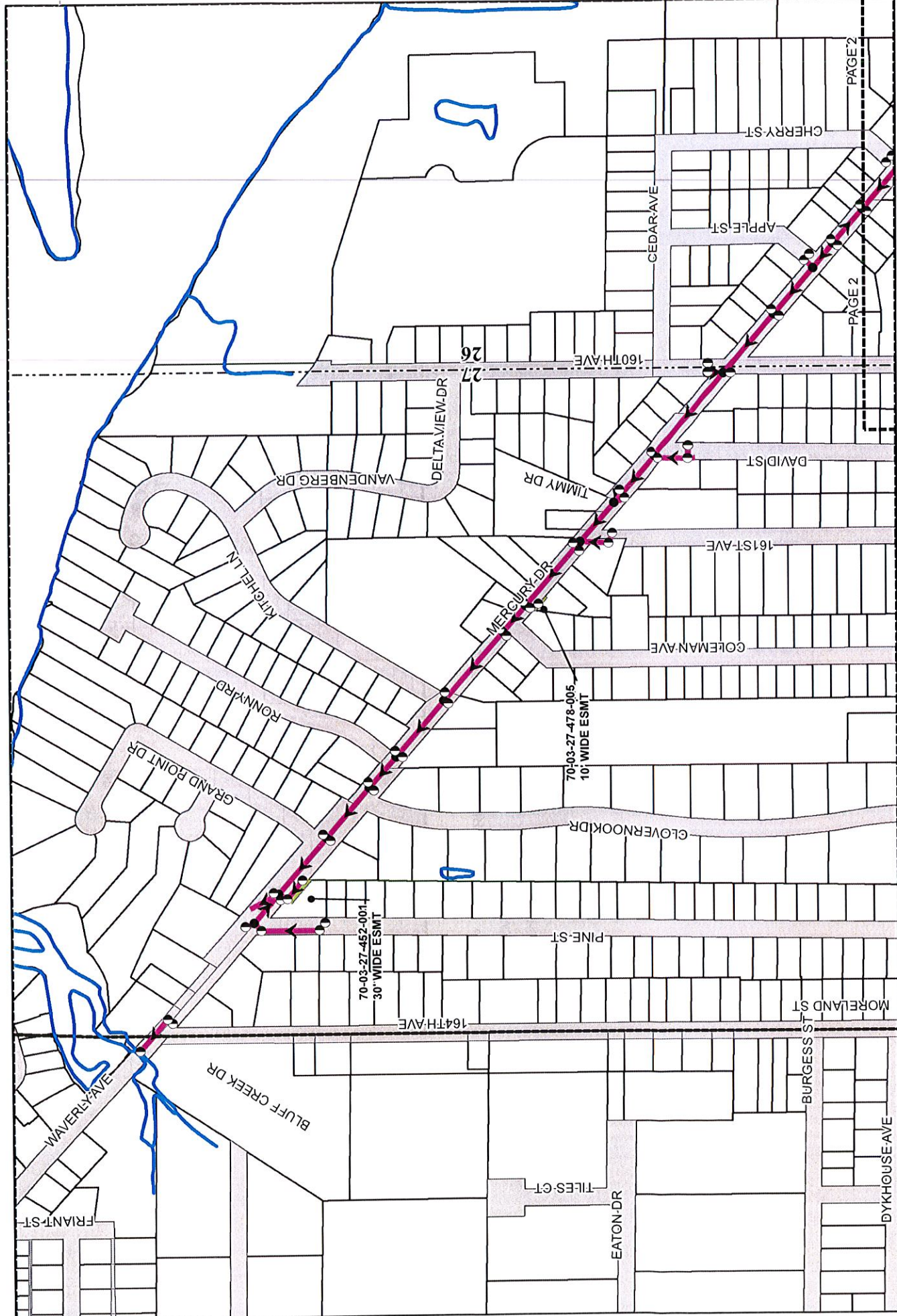
The public right-of-way of David Street from the intersection of Mercury Drive to approximately 200 feet south of the intersection of Mercury Drive;

The public right-of-way of 160th Avenue from the intersection of Mercury Drive to approximately 100 feet north of the intersection of Mercury Drive;

The public right-of-way of Apple Street from the intersection of Mercury Drive to approximately 100 feet north of Mercury Drive;

The public right-of-way of Cherry Street from the intersection of Mercury Drive to approximately 100 feet north of Mercury Drive;

The public right-of-way of Sharon Avenue from the intersection of Mercury Drive to approximately 100 feet southwest of the intersection of Mercury Drive;

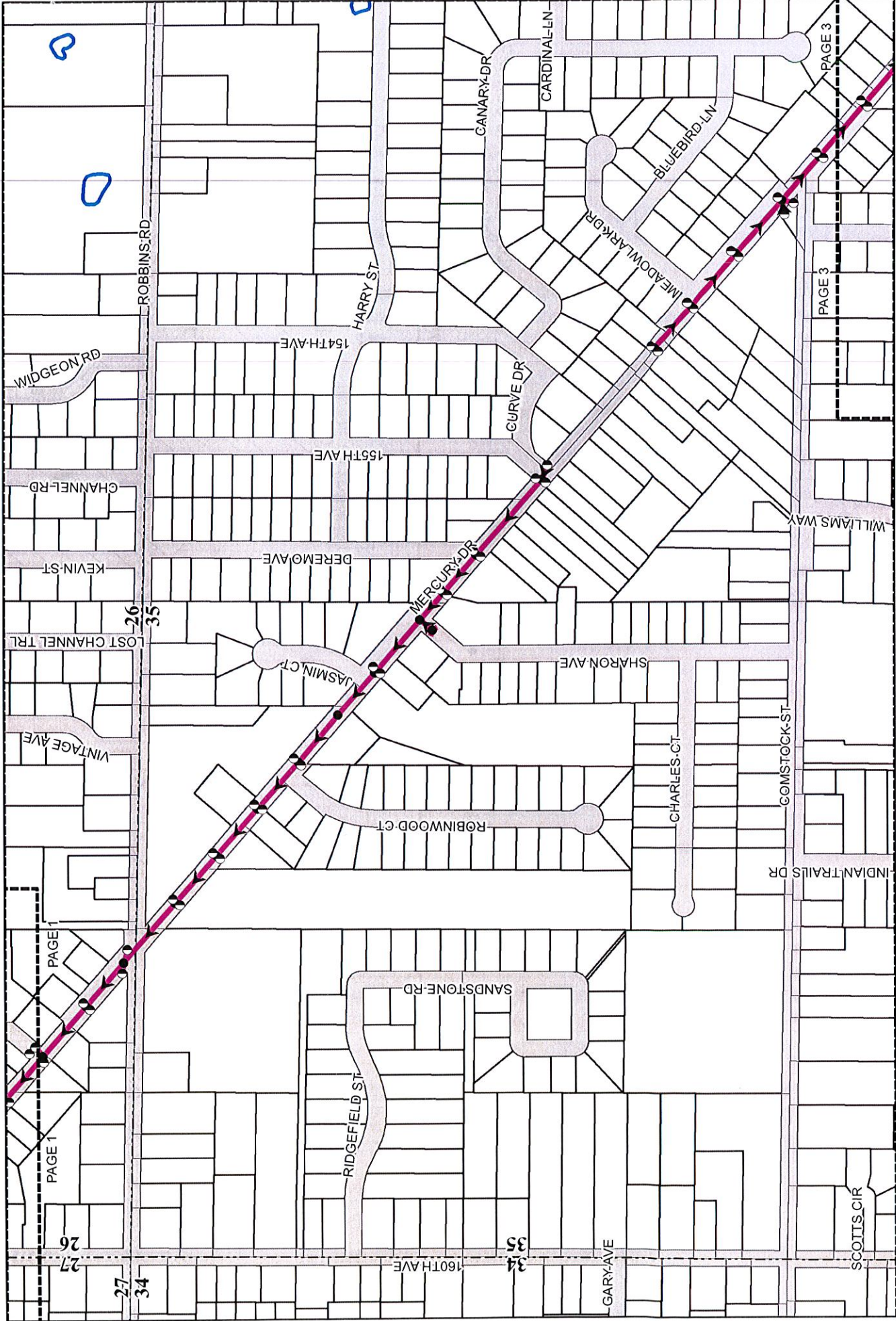


OTTAWA COUNTY WATER RESOURCES COMMISSIONER
 LOCATED IN SECTIONS 1, 26, 27, 35, AND 36
 CITY OF GRAND HAVEN AND GRAND HAVEN CHARTER TOWNSHIP
MERCURY DRIVE DRAIN
TENTATIVE ROUTE AND COURSE
 Prem&Newhof
 2190523

- LEGEND**
- PROP. MERCURY DRIVE STORM SEWER
 - MANHOLE
 - EASEMENT
 - CATCH BASIN
 - RIGHT OF WAY



SCALE: 1" = 500'

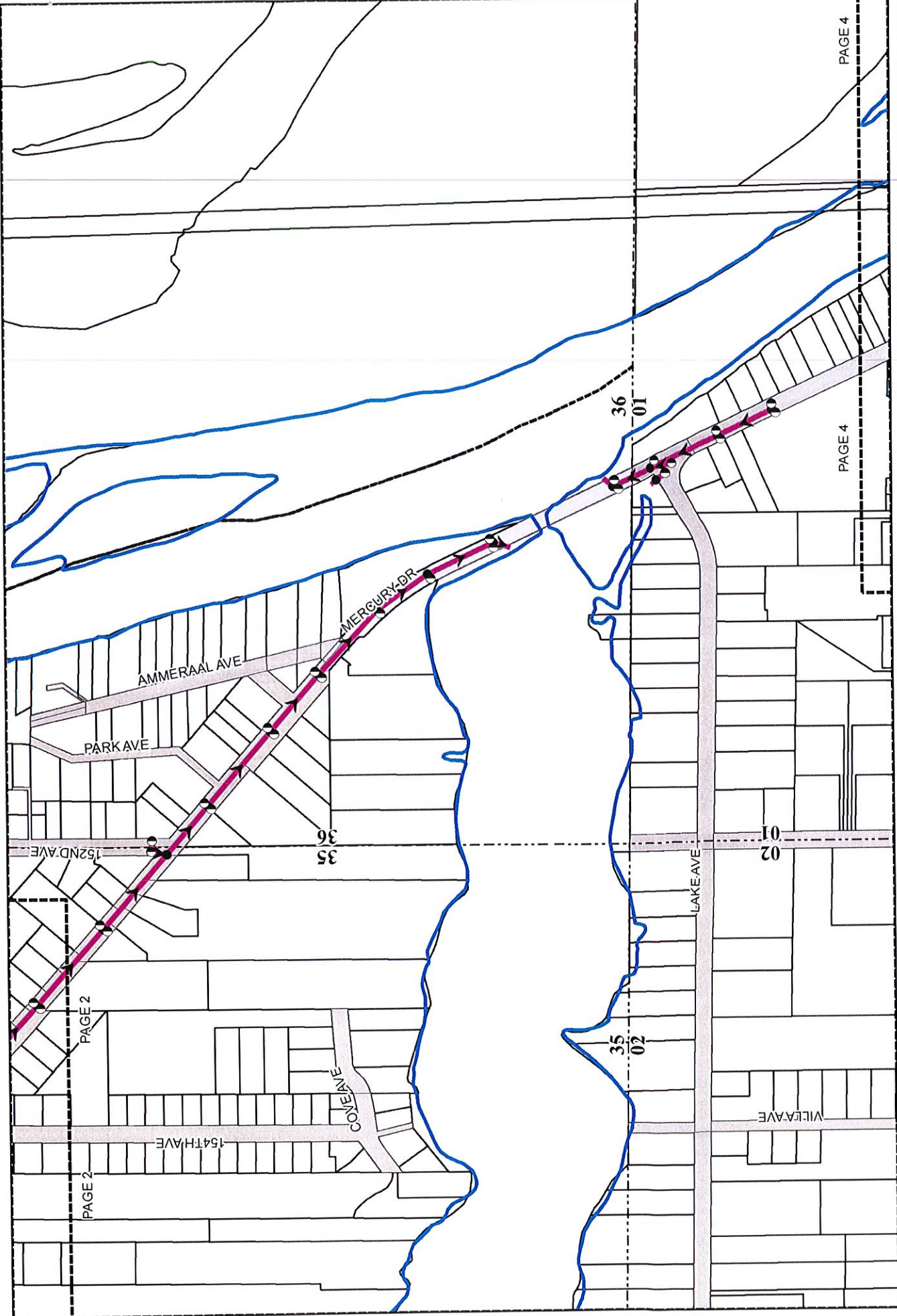


SCALE: 1" = 500'

LEGEND

-  PROP. MERCURY DRIVE STORM SEWER
-  EASEMENT
-  MANHOLE
-  RIGHT OF WAY
-  CATCH BASIN

OTTAWA COUNTY WATER RESOURCES COMMISSIONER
 LOCATED IN SECTIONS 1, 26, 27, 35, AND 36
 CITY OF GRAND HAVEN AND GRAND HAVEN CHARTER TOWNSHIP
MERCURY DRIVE DRAIN
TENTATIVE ROUTE AND COURSE
 Pretm&Newhof
 2190523



OTTAWA COUNTY WATER RESOURCES COMMISSIONER
 LOCATED IN SECTIONS 1, 26, 27, 35 AND 36
 CITY OF GRAND HAVEN AND GRAND HAVEN CHARTER TOWNSHIP
MERCURY DRIVE DRAIN
TENTATIVE ROUTE AND COURSE
 P. Tremblay & Newhof
 2190523

- LEGEND**
- PROP. MERCURY DRIVE STORM SEWER
 - EASEMENT
 - MANHOLE
 - RIGHT OF WAY
 - CATCH BASIN



SCALE: 1" = 500'



OTTAWA COUNTY WATER RESOURCES COMMISSIONER
 LOCATED IN SECTIONS 1, 26, 27, 35, AND 36
 CITY OF GRAND HAVEN AND GRAND HAVEN CHARTER TOWNSHIP
MERCURY DRIVE DRAIN
TENTATIVE ROUTE AND COURSE
 P. J. & S. J. NEWHOF
 2190523

- LEGEND**
- PROP. MERCURY DRIVE STORM SEWER
 - MANHOLE
 - EASEMENT
 - CATCH BASIN
 - RIGHT OF WAY



SCALE: 1" = 500'

PAGE 3

PAGE 3

11/15/2017 10:47 AM