

# FAQs



## FREQUENTLY ASKED QUESTIONS Rozeveld Ridge Board of Determination

### ***What is a Board of Determination?***

A Board of Determination is a 3-member panel of disinterested property owners. The role of the Board of Determination is to receive evidence and hear testimony of interested persons and determine whether the petitioned maintenance and improvement is necessary and conducive to the public health, convenience or welfare.

### ***What is a Drainage District?***

A drainage district is the land area that benefits from the drain. The drainage district makes up the watershed that contributes water to the drain. Each property and municipality within the drainage district pays for the construction (or establishment) of the drain and for future maintenance and improvement of the drain.

### ***Why did I receive a notice?***

A petition was filed with the Ottawa County Water Resources Commissioner requesting maintenance and improvement be performed on the Drain. All property owners with lands in the Drainage District were sent a copy of the notice.

### ***Does the Board of Determination decide what work gets done?***

No, the Board of Determination does not decide the scope of the project, the cost of the project, or the assessment amounts.

### ***Do I have to attend the Board of Determination?***

No, you are not required to attend the meeting; however, it is your right to do so.

### ***What happens after the Board of Determination?***

If a project is not found necessary, the process will end and no project will occur. If a project is found necessary, then the Water Resources Commissioner will work with engineers and other consultants to determine the scope of the project. Once a project scope is determined, the Water Resources Commissioner will hold a public meeting to review apportionments and assessments. Notices for the public meeting on assessments will be mailed to all property owners and municipalities in the Drainage District.

### ***What is my assessment amount?***

Estimated assessment amounts are not yet determined. If the Board of Determination finds the project necessary, estimated assessment amounts will be available at the public meeting to review apportionments and assessments.

### ***Can the decision of the Board of Determination be appealed?***

Yes. If a person feels aggrieved by the Board's determination of necessity, he/she may institute an action in circuit court within 10 days after the determination by the Board. MCL 280.72a or 280.197(7).

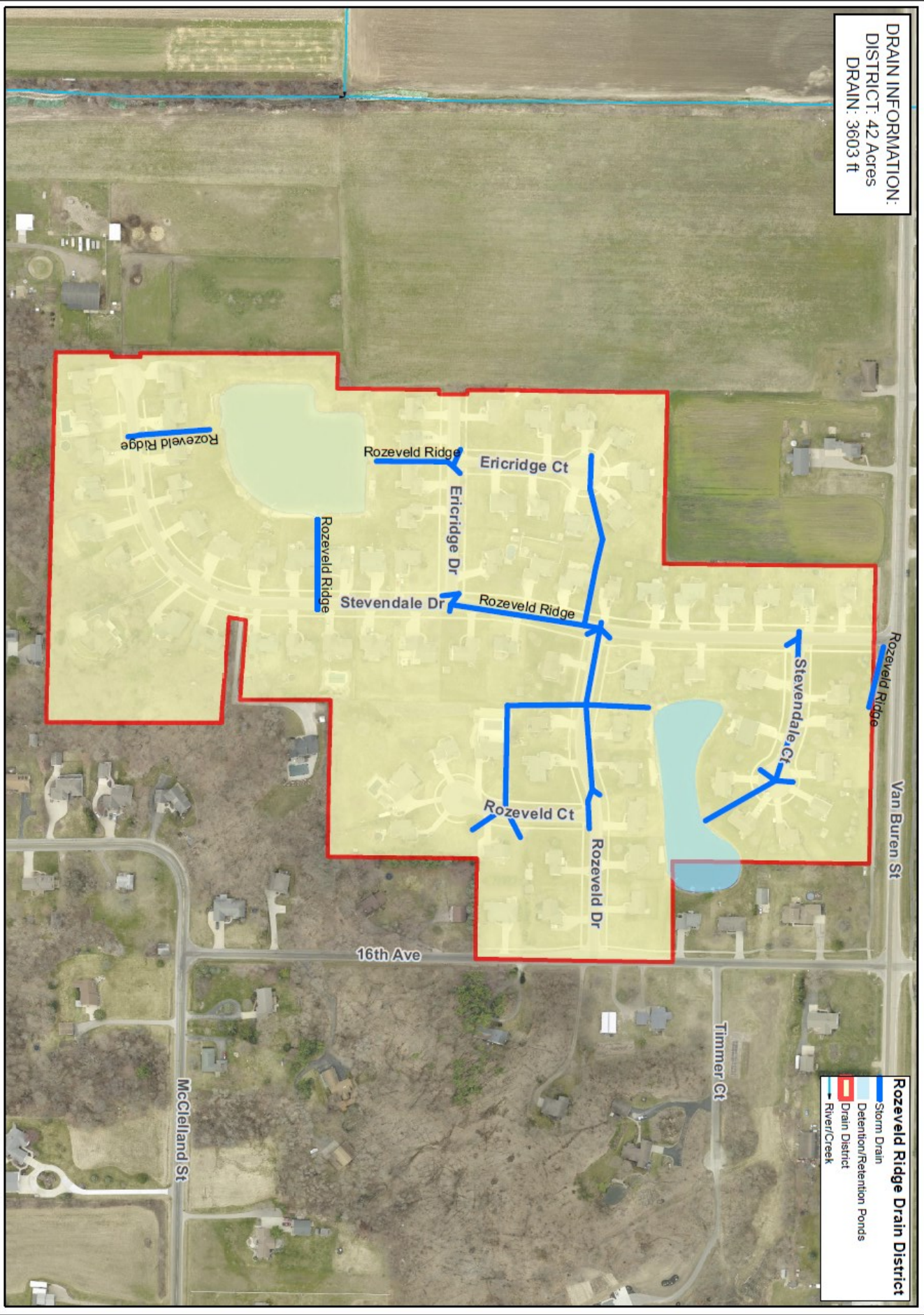
### ***How can I get more information?***

Visit the Commissioner's website at <https://www.miottawa.org/Departments/Drain> or call (616) 994-4530

Joe Bush

Ottawa County Water Resources Commissioner, 12220 Fillmore, Room 141, West Olive, MI 49460  
(616) 994-4530

**DRAIN INFORMATION:**  
 DISTRICT: 42 Acres  
 DRAIN: 3603 ft



**Rozeveld Ridge Drain District**

- Storm Drain
- Detention/Retention Ponds
- Drain District
- River/Creek

**Ottawa County Water Resources Commissioner**  
 Rozeveld Ridge Drain District

Ottawa County Water Resources Office  
 Water Resources Commissioner Joe Bush  
 12220 Primrose Street, Room 147  
 West Olive, MI, 49689  
 Last Update Date: 9/20/2022

