

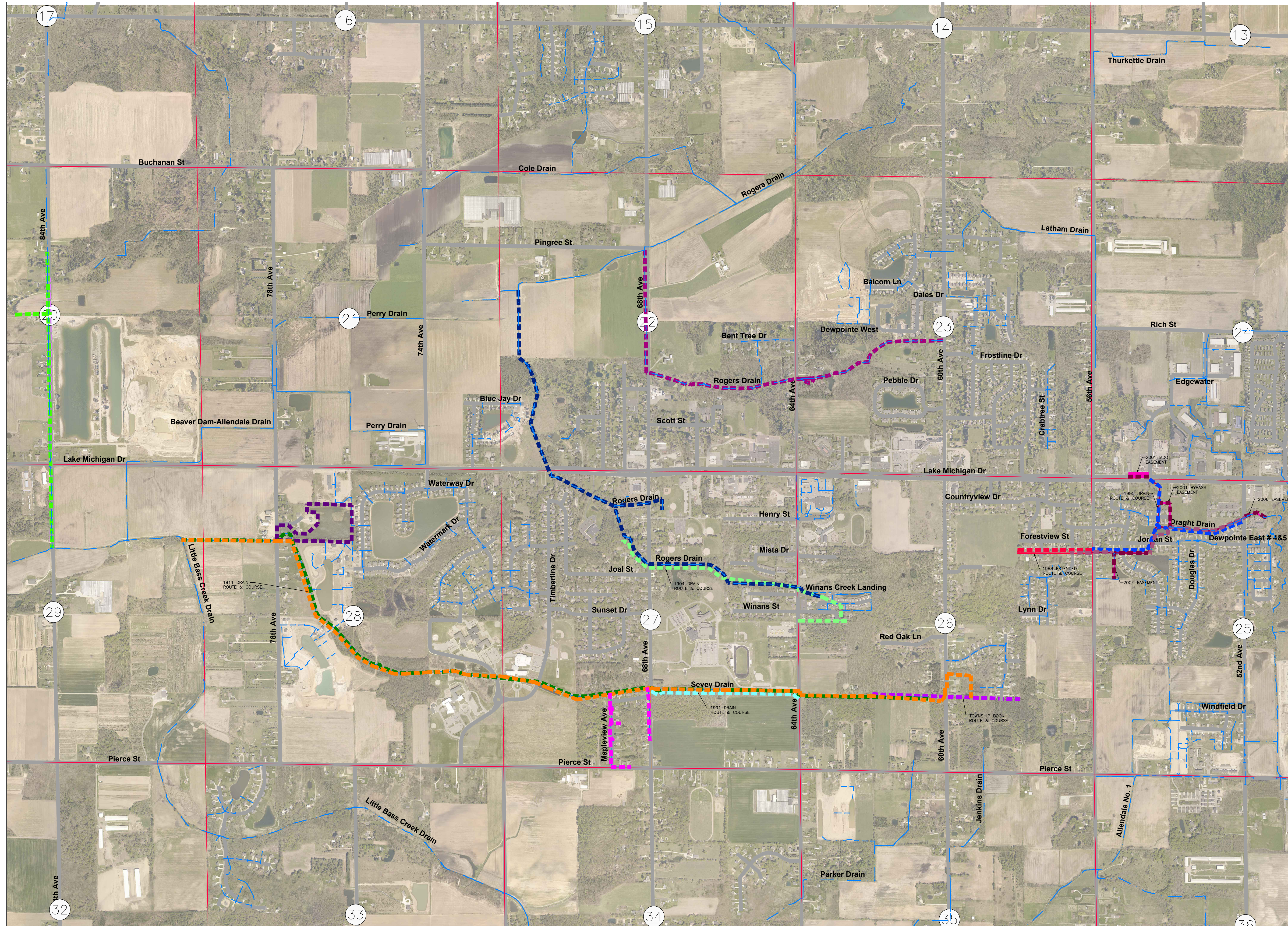
# SEVEY DRAIN

SEVEY DRAIN  
SECTIONS 26-29

ROGERS SOUTH RELIEF DRAINS  
SECTIONS 22 & 26-27

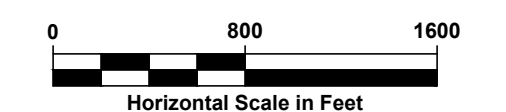
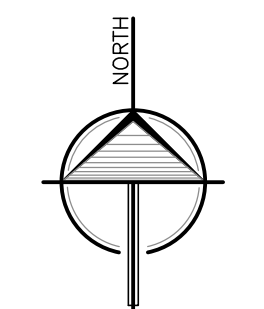
ROGERS NORTH DRAIN  
SECTIONS 22-23

DRAGHT DRAIN  
SECTIONS 25-26  
T07N, R14W  
ALLENDALE TOWNSHIP,  
OTTAWA COUNTY, MICHIGAN



## LEGEND

- DRAGHT DRAIN (1893)
- SHEFFIELD DRAIN (1893)
- DRAGHT DRAIN (1988 EXTENDED ROUTE & COURSE)
- DRAGHT DRAIN (1995)
- DRAGHT DRAIN EASEMENTS
- DRAGHT DRAIN GIS
- SEVEY DRAIN (1911)
- SEVEY DRAIN (1991 RR0W)
- SEVEY DRAIN (2012 BROOKSIDE BRANCH)
- SEVEY DRAIN (TWP BOOK)
- SEVEY DETENTION BASIN (1992 CH. 20)
- SEVEY DRAIN GIS
- ROGERS NORTH DRAIN GIS
- ROGERS SOUTH DRAIN (1904)
- ROGERS SOUTH DRAIN GIS
- DRAIN ALIGNMENT (ENCLOSED)
- DRAIN ALIGNMENT (OPEN CHANNEL)
- PARCEL LINES
- SECTION LINES
- ROAD LINE
- TOWNSHIP LINE
- COUNTY LINE
- # SECTION NUMBERS



## SEVEY DRAIN RAINBOW MAP

	2121 3 Mile Rd. NW Walker, MI 49544 Ph: 616-301-7888 www.LREMI.com	PROJECT#: 20-039
		DRAWN BY: MAC
		DATE: 06/2023
		QAQC: KJV