



County of Ottawa
Office of the Water Resources Commissioner

Joe Bush
Commissioner

Shaun McLarty
Chief Deputy

12220 Fillmore St, Room 141, West Olive, MI 49460 Ph.(616) 994-4530

FAX (616) 994-4529

Email waterresourcescommissioner@miottawa.org

NOTICE OF DRAIN MAINTENANCE

November 11, 2023

This notice is to inform you that a maintenance contract has been approved for the **Annema Drain** which runs through or near your property. The contractor will be starting work within the next six weeks. Contractor information including a map of the proposed drain cleanout area can be found on our website:

http://www.miottawa.org/Departments/Drain/maintenance_projects.htm

The drain maintenance may include; **brush/tree removal and sediment removal**. Any debris removed from the drain will be cut into manageable pieces and stacked in neat piles within the drain easement. If you would like the debris removed or placed in specific areas, it is your responsibility to make arrangements with the contractor and pay the associated costs directly. The contractor will restore all disturbed areas created as a result of the maintenance performed.

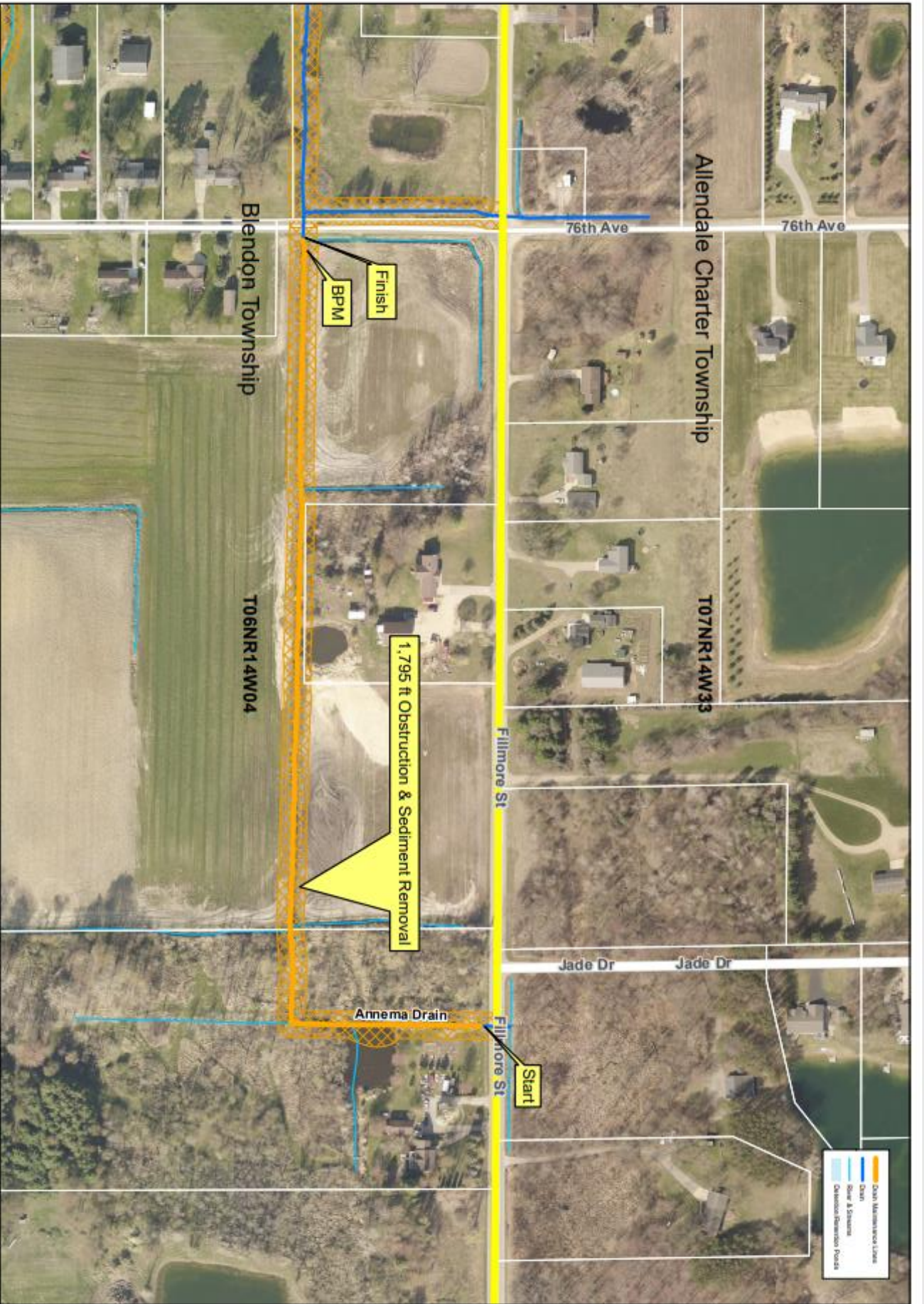
Please remove any fences, play sets or structures that are located within the drain easement as soon as possible. Also, make sure that any invisible dog fence, underground sprinkling, sump lines/tile outlet, property corner pins, etc. are marked. Care will be taken to avoid damage to anything within the drain easement; however, contractors will not be held responsible for something damaged that was not moved or marked.

Your cooperation is always appreciated in these matters. Should you have any questions, concerns, or input that you would like us to consider, feel free to contact us at 616-994-4530 or email waterresourcescommissioner@miottawa.org.

Thank You,

Emily Grasch
Drain Inspector

cc: Blendon Township
Randy G. Meyer Excavating (616) 437-7852



**Ottawa County Water Resources
Annema Drain Clean Out**

Section: Blendon Twp Sec 04
 Soil: Plainfield sand
 Length: 1,795 ft Cleanout
 Drain length: 1.8 Miles
 Easement: 25 ft each side