



County of Ottawa
Office of the Water Resources Commissioner

Joe Bush
Commissioner

Josiah Timmermans
Chief Deputy

12220 Fillmore, Room 141, West Olive, MI 49460 Ph.(616) 994-4530 FAX (616) 994-4529 Email waterresourcescommissioner@miottawa.org

NOTICE OF DRAIN MAINTENANCE

January 11, 2022

Recently an inspection was made of the **Black Creek of Zeeland Drain** which runs through or near your property. The result of the inspection was that maintenance including brush, tree, and sediment removal is necessary. During the next two weeks, contractors will be walking the drain/drainage easement to prepare their bid for the work. A follow-up letter will be sent out once we know who the contractor will be and their schedule.

As soon as possible, please mark any and all structures in the drainage easement (invisible dog fences, underground sprinkling, sump lines/tile outlet, property corner pins, etc.). Contractors will not be held responsible for anything damaged that was unmarked.

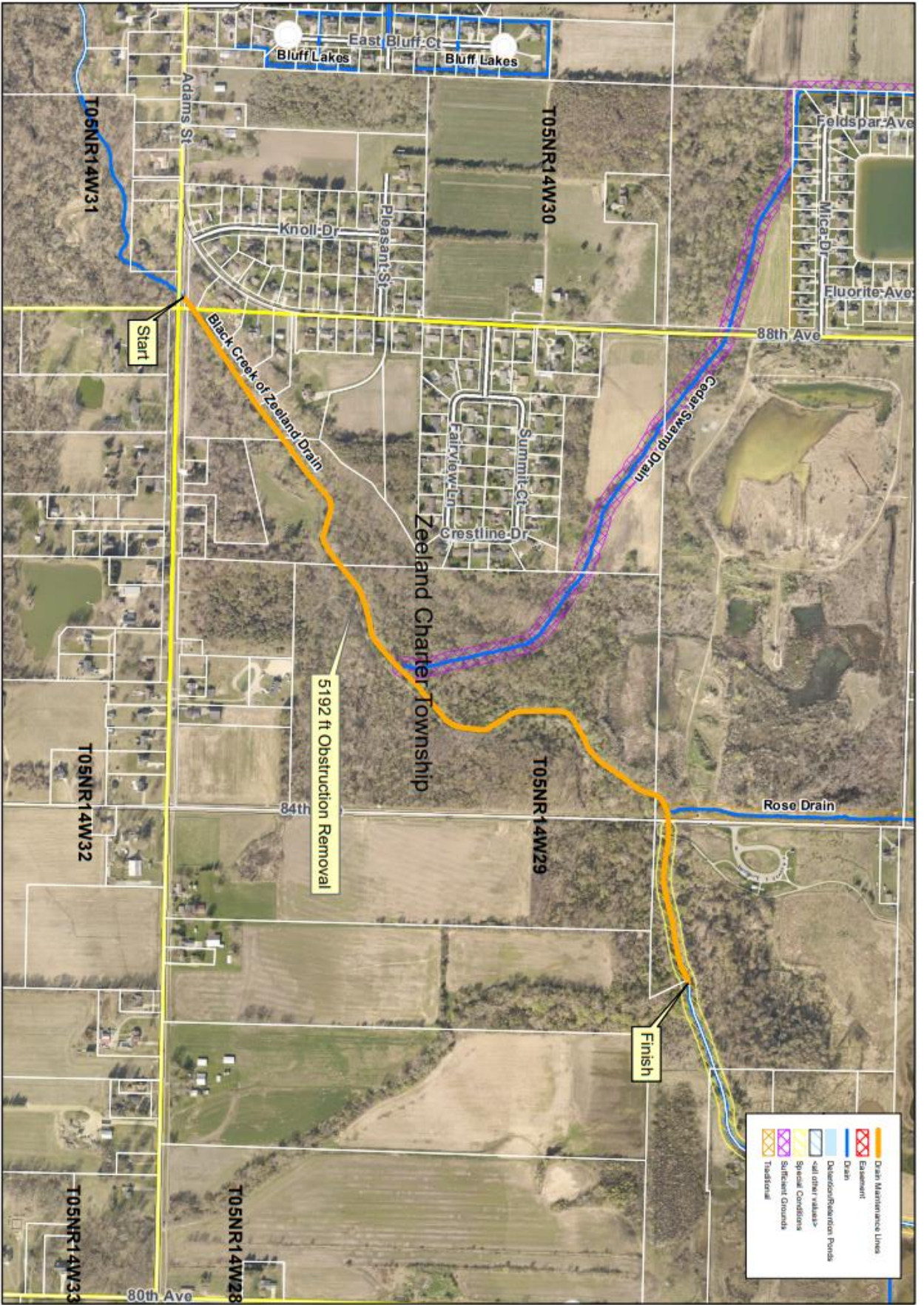
Your cooperation is always appreciated in these matters. Should you have any questions, concerns, or input that you would like us to consider, feel free to contact us at (616) 994-4530 or email waterresourcescommissioner@miottawa.org.

Thank You,

Chris Machiela
Drain Inspector

cc: Zeeland Township

Encl: Map of the proposed drain maintenance area (on the back of this letter)



	Drain Maintenance Lines
	Easement
	Drain
	Detention/Retention Ponds
	all other values
	Special Conditions
	Sufficient Grounds
	Traditional

Ottawa County Water Resources
Black Creek of Zeeland Drain Clean Out

Section: Zeeland 29
 Soil: Muck
 Length: 5192 ft Cleanout
 Drain length: 12.97 mi
 Easement: 0