



**County of Ottawa**  
*Office of the Water Resources Commissioner*

12220 Fillmore, Room 141, West Olive, MI 49460 Ph.(616) 994-4530 FAX (616) 994-4529 Email [waterresourcescommissioner@miottawa.org](mailto:waterresourcescommissioner@miottawa.org)

**Joe Bush**  
*Commissioner*

**Shaun McLarty**  
*Chief Deputy  
Commissioner*

## **NOTICE OF DRAIN MAINTENANCE**

December 12, 2024

Recently an inspection was made of the **Griswold Drain** which runs through or near your property. The result of the inspection was that maintenance including **sediment and debris removal are necessary**. During the next three weeks, contractors will be walking the drain/drainage easement to prepare their bid for the work. A follow-up letter will be sent out once we know who the contractor will be and their schedule.

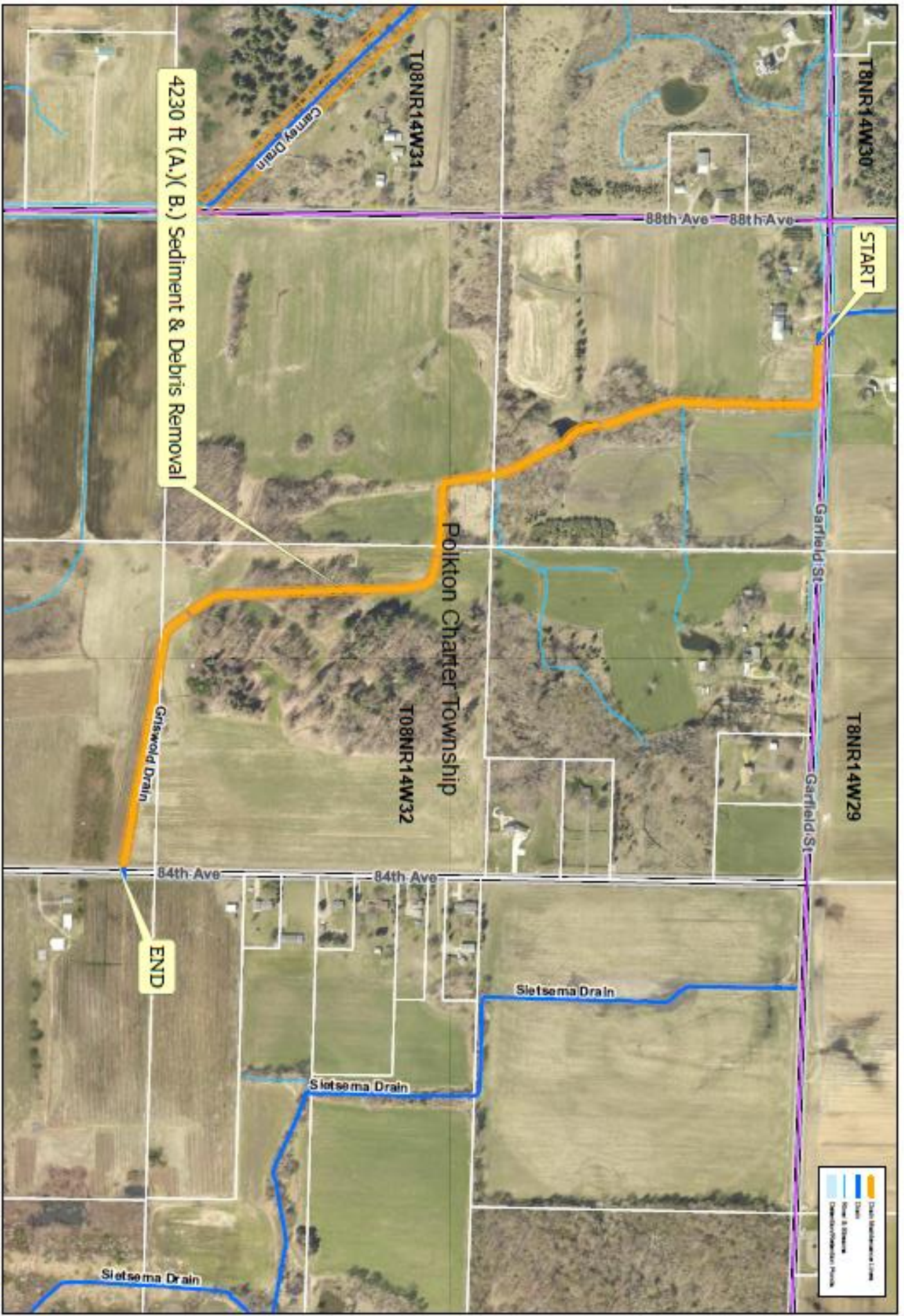
As soon as possible, please mark any and all structures in the drainage easement (invisible dog fences, underground sprinkling, sump lines/tile outlet, property corner pins, etc.). Contractors will not be held responsible for anything damaged that was unmarked.

Your cooperation is always appreciated in these matters. Should you have any questions, concerns, or input that you would like us to consider, feel free to contact us at (616) 994-4526 or email [waterresourcescommissioner@miottawa.org](mailto:waterresourcescommissioner@miottawa.org).

Thank You,

Emily Grasch  
Drain Inspector

Encl: Map of the proposed drain maintenance area (on the back of this letter)



4230 ft (A.) (B.) Sediment & Debris Removal

START

END

- Drain Maintenance Line
- Drain
- Flow & Structure
- Channel/Obstruction Point



Ottawa County Water Resources  
Gritswold Drain Maintenance

Section: Polkton Twp. 32  
Length: 4230 ft Clearcut  
Drain length: 11,973 ft  
Easement: 40' 100ft  
Soil Type: Loam Fine Sand

