



County of Ottawa
Office of the Water Resources Commissioner

Joe Bush
Commissioner

Shaun McLarty
*Chief Deputy
Commissioner*

12220 Fillmore, Room 141, West Olive, MI 49460 Ph.(616) 994-4530 FAX (616) 994-4529 Email waterresourcescommissioner@miottawa.org

NOTICE OF DRAIN MAINTENANCE

November 6, 2024

Recently an inspection was made of the **No. 3 Ch. 20 Drain** which runs through or near your property. The result of the inspection was that maintenance including **sediment and debris removal are necessary**. During the next two weeks, contractors will be walking the drain/drainage easement to prepare their bid for the work. A follow-up letter will be sent out once we know who the contractor will be and their schedule.

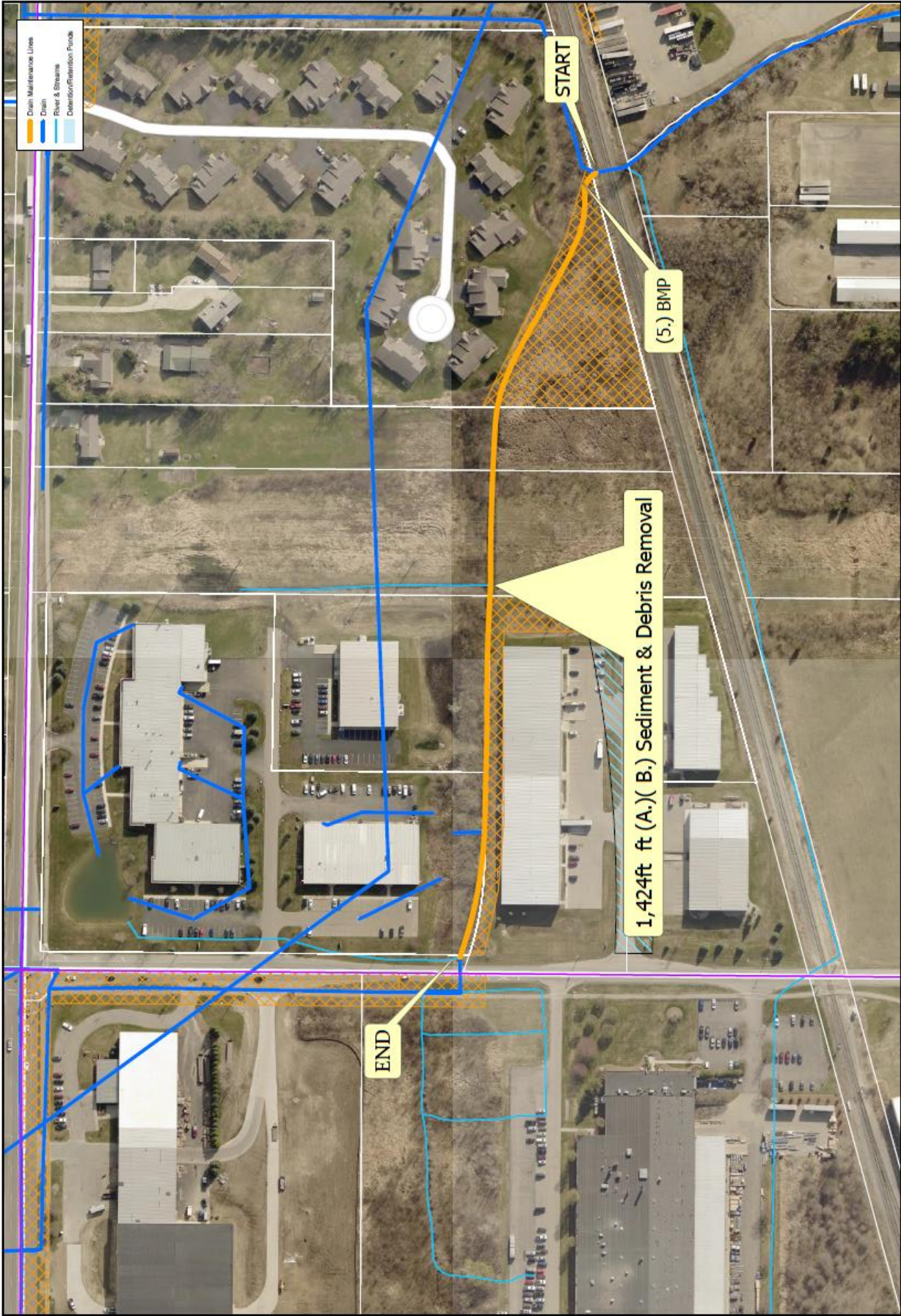
As soon as possible, please mark all structures in the drainage easement (invisible dog fences, underground sprinkling, sump lines/tile outlet, property corner pins, etc.). Contractors will not be held responsible for anything damaged that was unmarked.

Your cooperation is always appreciated in these matters. Should you have any questions, concerns, or input that you would like us to consider, feel free to contact us at (616) 994-4526 or email waterresourcescommissioner@miottawa.org.

Thank You,

Emily Grasch
Drain Inspector

Encl: Map of the proposed drain maintenance area (on the back of this letter)



- Drain Maintenance Lines
- Drain
- River & Stream
- Detention/Retention Ponds

START

(5.) BMP

1,424 ft (A.) (B.) Sediment & Debris Removal

END

Section: Holland Sec 23
 Length: 1424 ft Cleanout
 Drain length: 10,335ft
 Easement: Mixed
 Soil Type: Plainfield Sand

**Ottawa County Water Resources
 No. 3 Ch 20 Drain Maintenance**

