



**County of Ottawa**  
*Office of the Water Resources Commissioner*

**Joe Bush**  
*Commissioner*

**Shaun McLarty**  
*Chief Deputy*

12220 Fillmore St, Room 141, West Olive, MI 49460

Ph. (616) 994-4530

FAX (616) 994-4529

Email

[waterresourcescommissioner@miottawa.org](mailto:waterresourcescommissioner@miottawa.org)

## NOTICE OF DRAIN MAINTENANCE

**February 24, 2024**

This notice is to inform you that a maintenance contract has been approved for the **Otter Creek** Drain. The contractor will be starting work within the next four weeks.

The drain maintenance may include; **brush/tree removal**. Any debris removed from the drain will be cut into manageable pieces and stacked in neat piles within the drain easement. If you would like the debris removed or placed in specific areas, it is your responsibility to make arrangements with the contractor and pay the associated costs directly. The contractor will restore all disturbed areas created as a result of the maintenance performed.

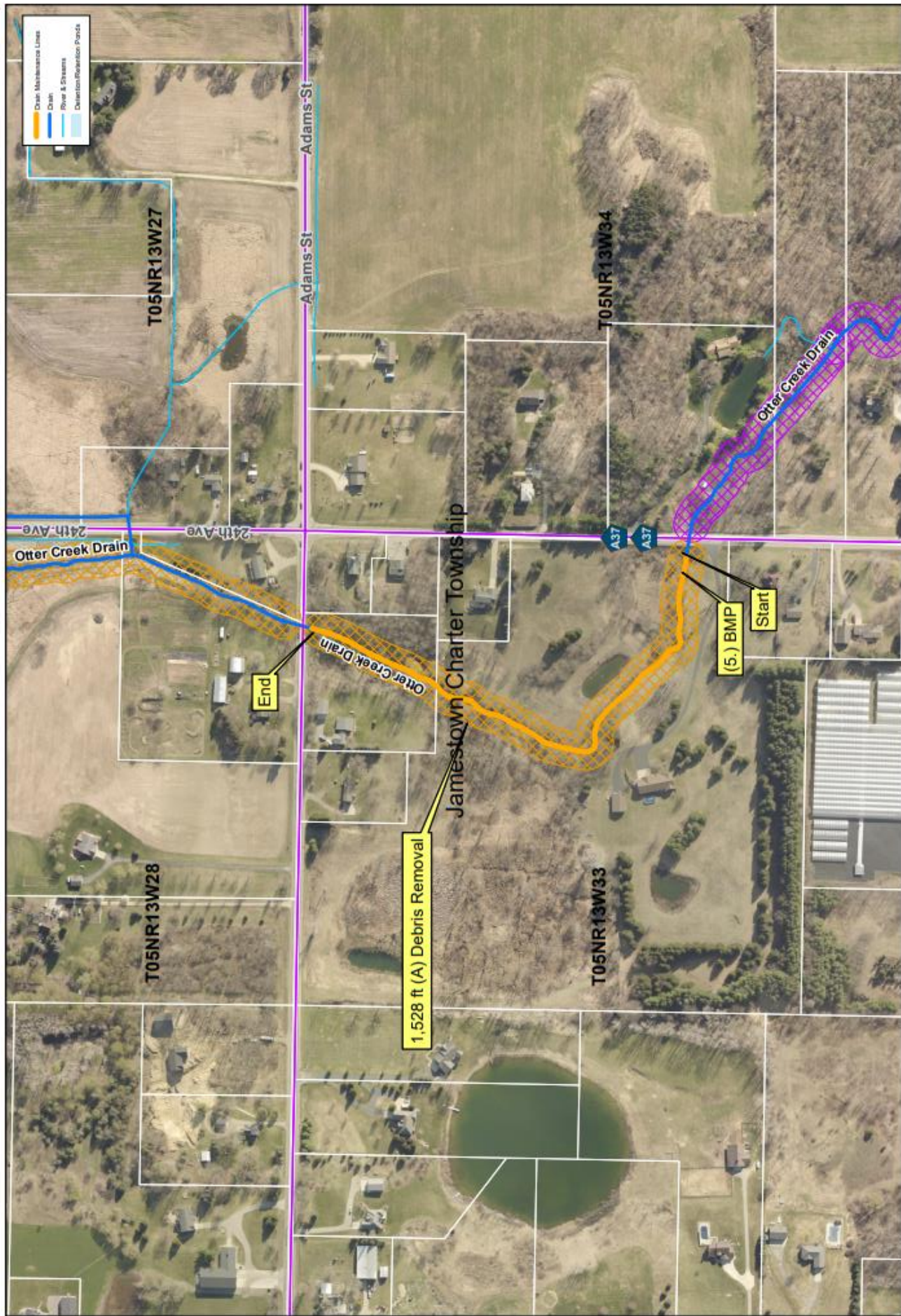
Please remove any fences, play sets or structures that are located within the drain easement as soon as possible. Also, make sure that any invisible dog fence, underground sprinkling, sump lines/tile outlet, property corner pins, etc. are marked. Care will be taken to avoid damage to anything within the drain easement; however, contractors will not be held responsible for something damaged that was not moved or marked.

Your cooperation is always appreciated in these matters. Should you have any questions, concerns, or input that you would like us to consider, feel free to contact us at 616-994-4526 or email [waterresourcescommissioner@miottawa.org](mailto:waterresourcescommissioner@miottawa.org).

Thank You,

Emily Grasch  
Drain Inspector

cc: Busscher Development (616) 836-1521  
Jamestown Charter Township



Section: Jamestown, Sec 33  
 Length: 1,528 ft Cleanout  
 Drain length: 15,493 ft  
 Easement: 25  
 Soil Type: Muck

**Ottawa County Water Resources**  
**Otter Creek Drain Clean Out**  
 BPM: (5.) Perimeter Sediment Control Measures

