



**County of Ottawa**  
*Office of the Water Resources Commissioner*

**Joe Bush**  
*Commissioner*

**Josiah Timmermans**  
*Chief Deputy*

12220 Fillmore St, Room 141, West Olive, MI 49460 Ph. (616) 994-4530 FAX (616) 994-4529 Email [waterresourcescommissioner@miottawa.org](mailto:waterresourcescommissioner@miottawa.org)

## **NOTICE OF DRAIN MAINTENANCE**

**October 18, 2022**

This notice is to inform you that a maintenance contract has been approved for the **Ottawa Creek Drain** which runs through or near your property. The contractor will be starting work within the next two weeks. Contractor information including a map of the proposed drain cleanout area can be found on our website:

[http://www.miottawa.org/Departments/Drain/maintenance\\_projects.htm](http://www.miottawa.org/Departments/Drain/maintenance_projects.htm)

The drain maintenance may include; **brush/tree removal and sediment removal**. Any debris removed from the drain will be cut into manageable pieces and stacked in neat piles within the drain easement. If you would like the debris removed or placed in specific areas, it is your responsibility to make arrangements with the contractor and pay the associated costs directly. The contractor will restore all disturbed areas created as a result of the maintenance performed.

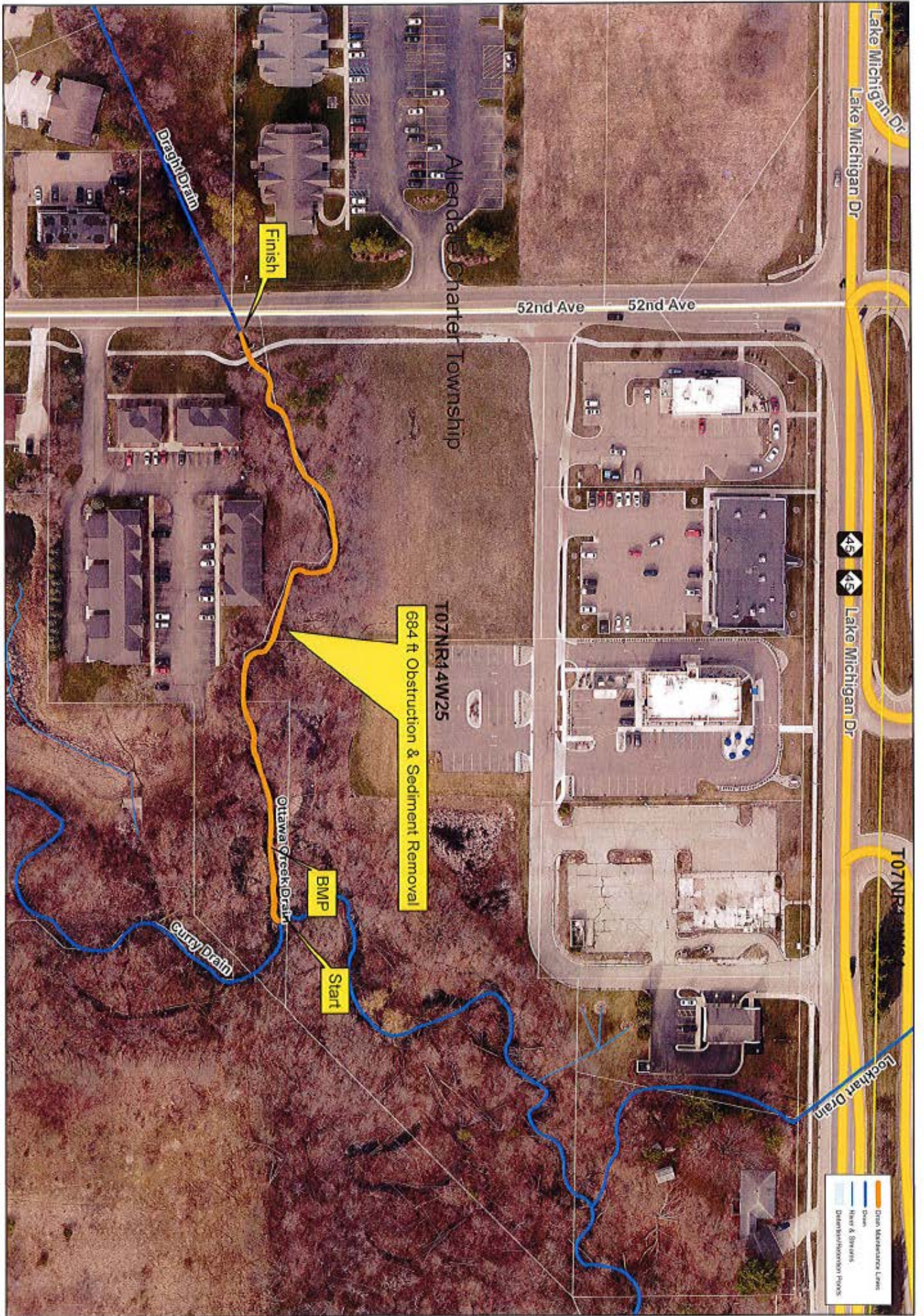
Please remove any fences, play sets or structures that are located within the drain easement as soon as possible. Also, make sure that any invisible dog fence, underground sprinkling, sump lines/tile outlet, property corner pins, etc. are marked. Care will be taken to avoid damage to anything within the drain easement; however, contractors will not be held responsible for something damaged that was not moved or marked.

Your cooperation is always appreciated in these matters. Should you have any questions, concerns, or input that you would like us to consider, feel free to contact us at 616-994-4530 or email [waterresourcescommissioner@miottawa.org](mailto:waterresourcescommissioner@miottawa.org).

Thank You,

Chris Machiela  
Drain Inspector

cc: Allendale Township  
Busscher Development (616) 836-1521



Ottawa County Water Resource  
 Ottawa Creek Drain Clean Out

Section: Allendale Sec 25  
 Soil: Brookfield Loam  
 Length: 684 ft Cleanout  
 Drain length: 684 ft  
 Easement: 35' ft