



**County of Ottawa**  
*Office of the Water Resources Commissioner*

**Joe Bush**  
*Commissioner*

**Shaun McLarty**  
*Chief Deputy*

12220 Fillmore St, Room 141, West Olive, MI 49460

Ph. (616) 994-4530

FAX (616) 994-4529

Email

[waterresourcescommissioner@miottawa.org](mailto:waterresourcescommissioner@miottawa.org)

## **NOTICE OF DRAIN MAINTENANCE**

**October 14, 2024**

This notice is to inform you that a maintenance contract has been approved for the **Rozeveld Ridge** Drain. The contractor will be starting work within the next two weeks.

The drain maintenance may include a **sediment removal and rip rap installation**. The contractor will grade and seed, if necessary, in all disturbed areas created as a result of the maintenance performed.

Please remove any fences, play sets or structures that are located within the drain easement as soon as possible. Also, make sure that any invisible dog fence, underground sprinkling, sump lines/tile outlet, property corner pins, etc. are marked. Care will be taken to avoid damage to anything within the drain easement; however, contractors will not be held responsible for something damaged that was not moved or marked.

Your cooperation is always appreciated in these matters. Should you have any questions, concerns, or input that you would like us to consider, feel free to contact us at 616-994-4526 or email [waterresourcescommissioner@miottawa.org](mailto:waterresourcescommissioner@miottawa.org).

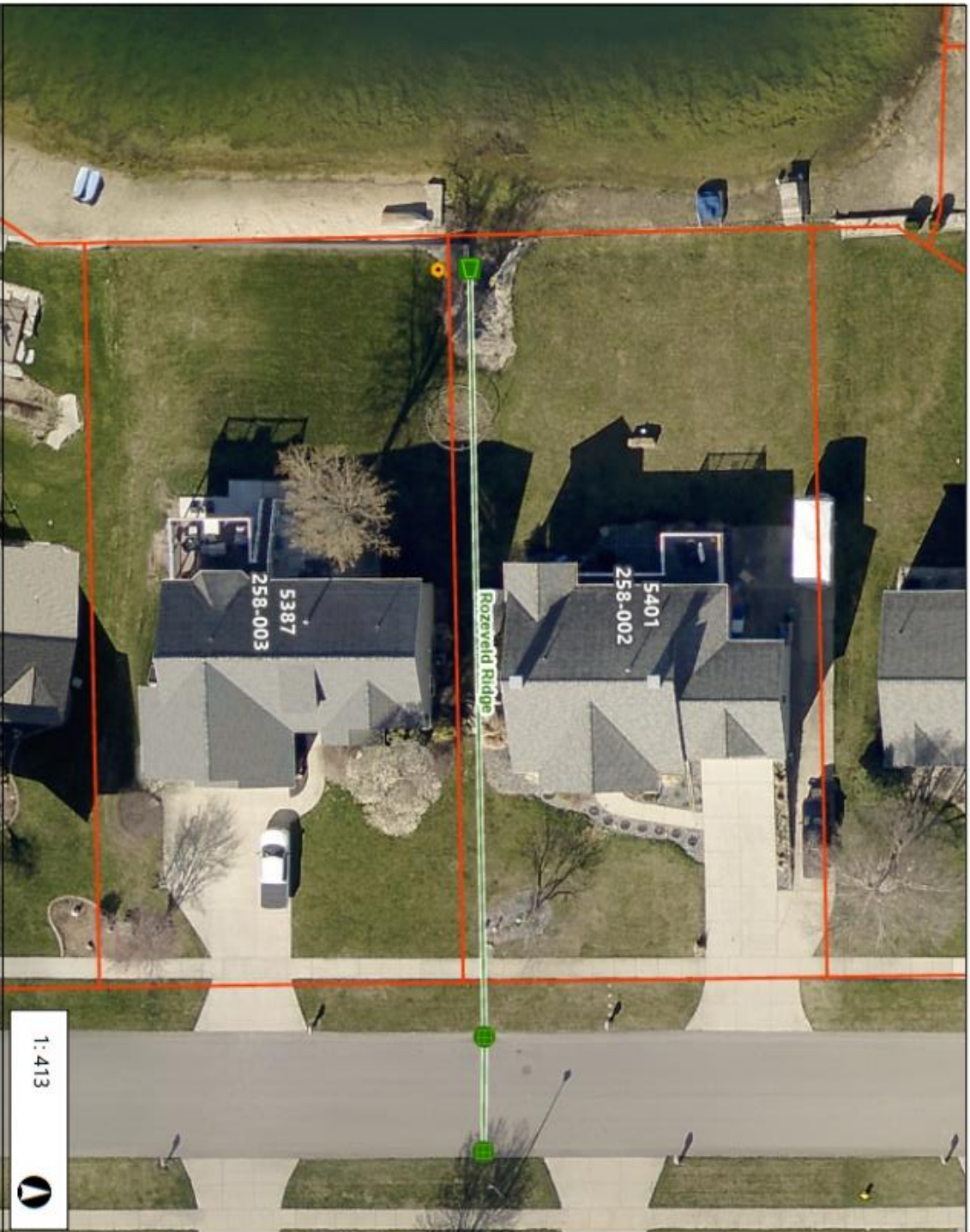
Thank You,

Emily Grasch  
Drain Inspector

cc: JW Excavating (616) 836-9406



# Rozeveld Ridge Map



1 : 413



68.8



WGS, 1984 Web, Mercator, Auxiliary, Sphere  
© Latitude Geographics Group Ltd.

This map is a user generated static output from an Internet mapping site and is for reference only. Data layers that appear on this map may or may not be accurate, current, or otherwise reliable.

**THIS MAP IS NOT TO BE USED FOR NAVIGATION**

### Legend

- OOCWRC Storm Inlets
  - Double Catch Basin
  - Flared End Section
  - All Other Inlets
- OOCWRC Storm Fittings**
  - Bend
  - Cap
  - Coupling
  - Cross
  - Expansion Joint
  - Other
  - Over Under
  - Reducer; Reducing Cross; Reducin
  - Sleeve
  - Tap
  - Tee
  - Transition

### Notes

