



County of Ottawa
Office of the Water Resources Commissioner

Joe Bush
Commissioner

Linda Brown
Chief Deputy

12220 Fillmore, Room 141, West Olive, MI 49460

Ph.(616) 994-4530

FAX (616) 994-4529

Email waterresourcescommissioner@miottawa.org

NOTICE OF DRAIN MAINTENANCE

November 17, 2017

Recently an inspection was made of the **Schneider Intercounty Drain – Lower Branch** which runs through or near your property. The result of the inspection was that maintenance including brush, tree, and sediment removal is necessary. During the next two weeks, contractors will be walking the drain/drainage easement to prepare their bid for the work. A follow-up letter will be sent out once we know who the contractor will be and their schedule.

As soon as possible, please mark any and all structures in the drainage easement (invisible dog fences, underground sprinkling, sump lines/tile outlet, property corner pins, etc.). Contractors will not be held responsible for anything damaged that was unmarked.

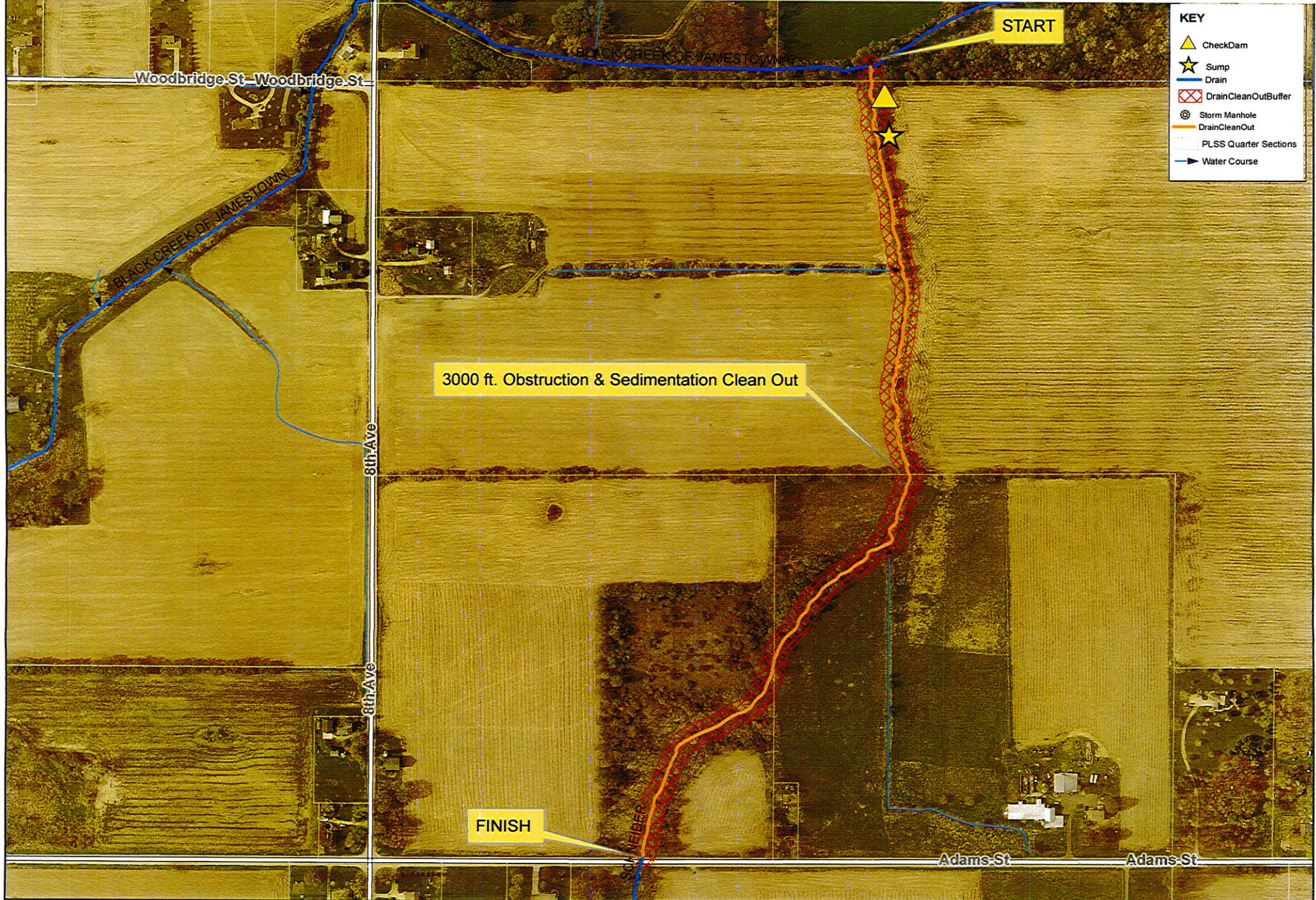
Your cooperation is always appreciated in these matters. Should you have any questions, concerns, or input that you would like us to consider, feel free to contact us at (616) 994-4530 or email waterresourcescommissioner@miottawa.org.

Thank You,

Chris Machiela
Drain Inspector

cc: Jamestown Township

Encl: Map of the proposed drain maintenance area (on the back of this letter)

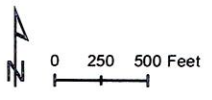


KEY	
	CheckDam
	Sump
	Drain
	DrainCleanOutBuffer
	Storm Manhole
	DrainCleanOut
	PLSS Quarter Sections
	Water Course

3000 ft. Obstruction & Sedimentation Clean Out

FINISH

START



**Ottawa County Water Resources
Schneider I.C.Drain Clean Out**

Section Town Range: Jamestown SW 1/4 Sec25
 Soil: Richter RcA
 Length:3000 ft Cleanout
 Drain length:2.03 mi
 Easement: 40 ft each side