



County of Ottawa
Office of the Water Resources Commissioner

Joe Bush
Commissioner

Josiah Timmermans
Chief Deputy

12220 Fillmore, Room 141, West Olive, MI 49460 Ph.(616) 994-4530 FAX (616) 994-4529 Email waterresourcescommissioner@miottawa.org

NOTICE OF DRAIN MAINTENANCE

October 20, 2022

Recently an inspection was made of the **Sheridain Drain** which runs through or near your property. The result of the inspection was that maintenance including brush, tree, and sediment removal is necessary. During the next two weeks, contractors will be walking the drain/drainage easement to prepare their bid for the work. A follow-up letter will be sent out once we know who the contractor will be and their schedule.

As soon as possible, please mark any and all structures in the drainage easement (invisible dog fences, underground sprinkling, sump lines/tile outlet, property corner pins, etc.). Contractors will not be held responsible for anything damaged that was unmarked.

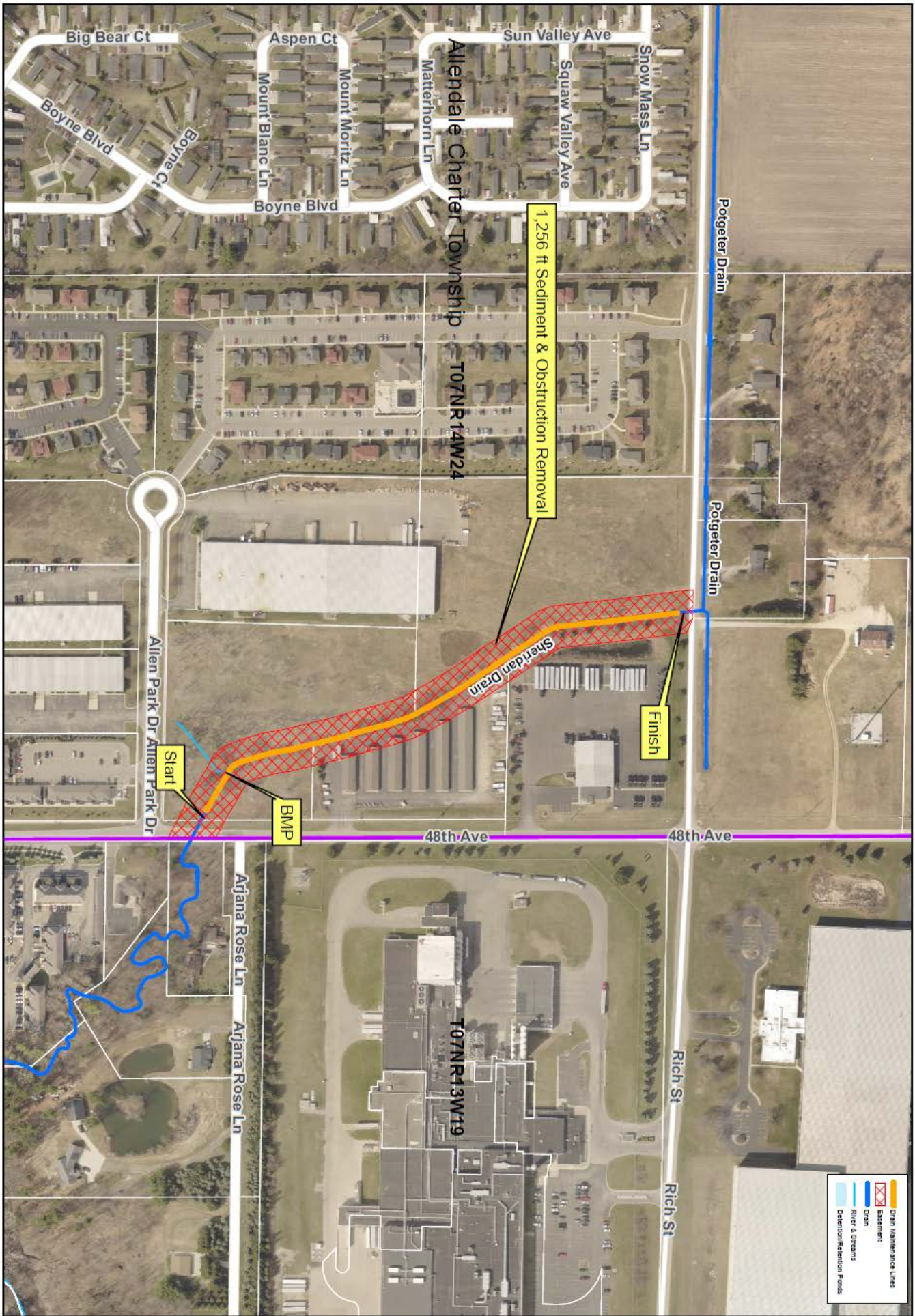
Your cooperation is always appreciated in these matters. Should you have any questions, concerns, or input that you would like us to consider, feel free to contact us at (616) 994-4530 or email waterresourcescommissioner@miottawa.org.

Thank You,

Chris Machiela
Drain Inspector

cc: Allendale Charter Township

Encl: Map of the proposed drain maintenance area (on the back of this letter)



1,256 ft Sediment & Obstruction Removal

Finish

Start

BMP

48th Ave

48th Ave

Allendale Charter Township
T07NR14W24

T07NR13W19



Ottawa County Water Resource
Sheridan Drain Clean Out

- Drain Maintenance Lines
- Easement
- Drain
- River & Streams
- Detention/Retention Ponds

Section: Allendale Sec 24
Soil: Loam
Length: 1,256 ft Cleanout
Drain length: ft
Easement: SG(ft)