



**County of Ottawa**  
*Office of the Water Resources Commissioner*

**Joe Bush**  
Commissioner

12220 Fillmore St, Room 141, West Olive, MI 49460 Ph. (616) 994-4530 FAX (616) 994-4529 Email [waterresourcescommissioner@miottawa.org](mailto:waterresourcescommissioner@miottawa.org)

## **NOTICE OF DRAIN MAINTENANCE**

January 17, 2023

Recently an inspection was made due to property owner complaints of the **Walters Drain and Worley Drain** which runs through or near your property. The result of the inspection was that maintenance including brush, tree, and sediment removal is necessary. A maintenance contract has been approved for this work.

The drain maintenance may include; **brush/tree removal and sediment removal**. Any debris removed from the drain will be cut into manageable pieces and stacked in neat piles within the drain easement. If you would like the debris removed or placed in specific areas, it is your responsibility to make arrangements with the contractor and pay the associated costs directly. The contractor will restore all disturbed areas created as a result of the maintenance performed.

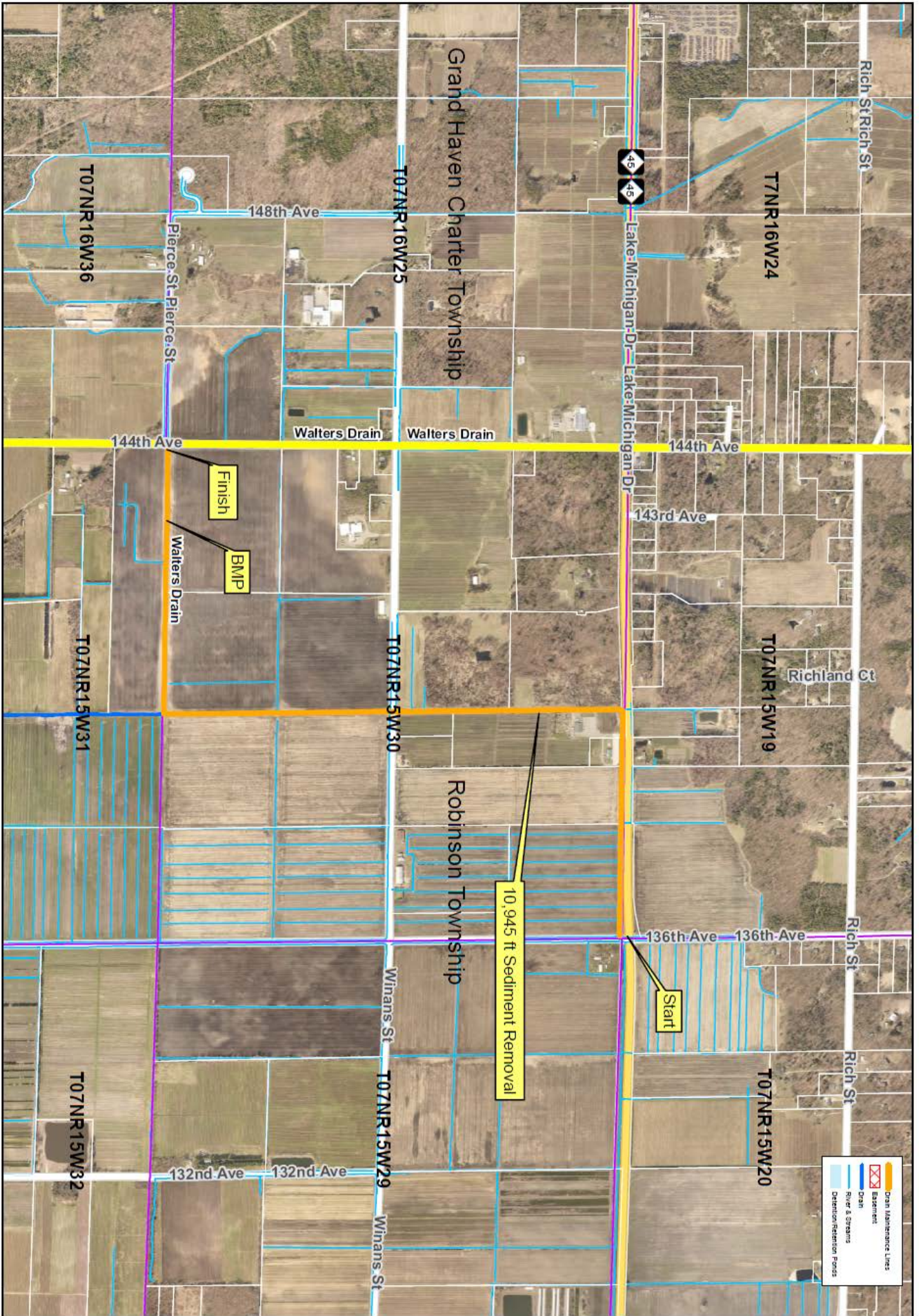
Please remove any fences, play sets or structures that are located within the drain easement as soon as possible. Also, make sure that any invisible dog fence, underground sprinkling, sump lines/tile outlet, property corner pins, etc are marked. Care will be taken to avoid damage to anything within the drain easement; however, contractors will not be held responsible for something damaged that was not moved or marked.

Your cooperation is always appreciated in these matters. Should you have any questions, concerns, or input that you would like us to consider, feel free to contact us at (616) 994-4530 or email [waterresourcescommissioner@miottawa.org](mailto:waterresourcescommissioner@miottawa.org).

Thank You,

Joe Bush  
Water Resources Commissioner

cc: Grand Haven Charter Township  
Robinson Township



**Ottawa County Water Resources  
Worley (7,861 ft) & Walters (3,084 ft) Drain Clean Out**

Section: Robinson Twp Sec 30.31

Soil: Muck  
 Length: 10,945 ft Cleanout  
 Drain length:  
 Worley: 26,012 ft  
 Walters: 27,474 ft  
 Easement: Roadside