



**County of Ottawa**  
*Office of the Water Resources Commissioner*

**Joe Bush**  
*Commissioner*

**Linda Brown**  
*Chief Deputy*

---

12220 Fillmore, Room 141, West Olive, MI 49460 Ph.(616) 994-4530 FAX (616) 994-4529 Email [waterresourcescommissioner@miottawa.org](mailto:waterresourcescommissioner@miottawa.org)

## **NOTICE OF DRAIN MAINTENANCE**

**October 13, 2016**

Upon inspection it was determined that maintenance was needed to the **Cole** Drain which runs thru or near your property. During the next two weeks, contractors will be walking the drain/drainage easement to prepare their bid for the clean out. Once bids are received and the project is awarded the contractor information including proposed start date can be found on our website:

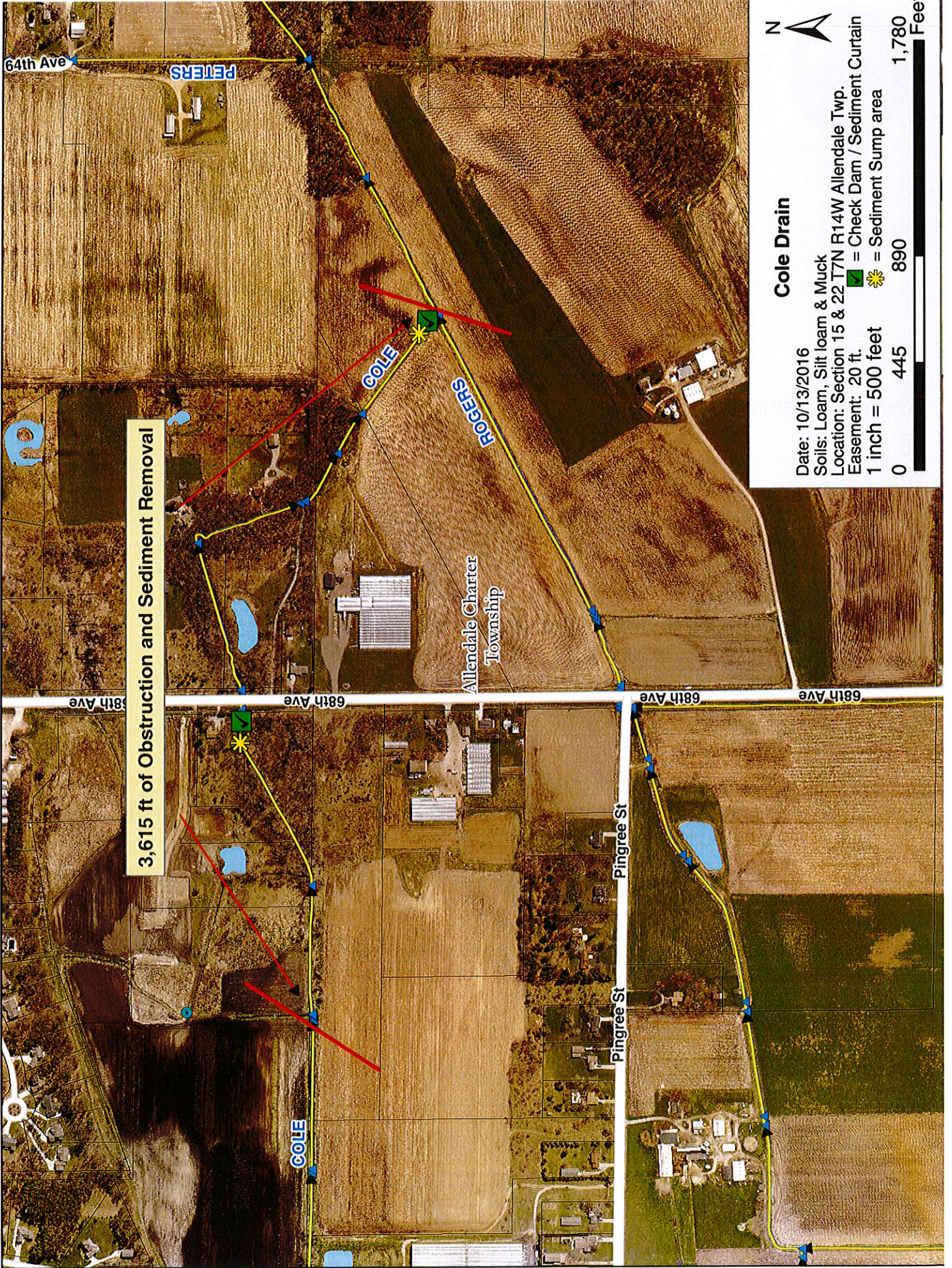
[http://www.miottawa.org/Departments/Drain/maintenance\\_projects.htm](http://www.miottawa.org/Departments/Drain/maintenance_projects.htm)

As soon as possible, please mark any and all structures in the drainage easement (invisible dog fences, underground sprinkling, sump lines/tile outlet, property corner pins, etc.). Contractors will not be held responsible for something damaged that was not marked.

Your cooperation is always appreciated in these matters. Should you have any questions, concerns, or input that you would like us to consider, feel free to contact us at 616-994-4530 or email [waterresourcescommissioner@miottawa.org](mailto:waterresourcescommissioner@miottawa.org).

Thank You,  
Chris Machiela  
Drain Inspector

**C: Allendale Twp**



3,615 ft of Obstruction and Sediment Removal



**Cole Drain**

Date: 10/13/2016  
 Soils: Loam, Silt loam & Muck  
 Location: Section 15 & 22 T7N R14W Allendale Twp.  
 Easement: 20 ft. ■ = Check Dam / Sediment Curtain  
 1 inch = 500 feet ★ = Sediment Sump area

