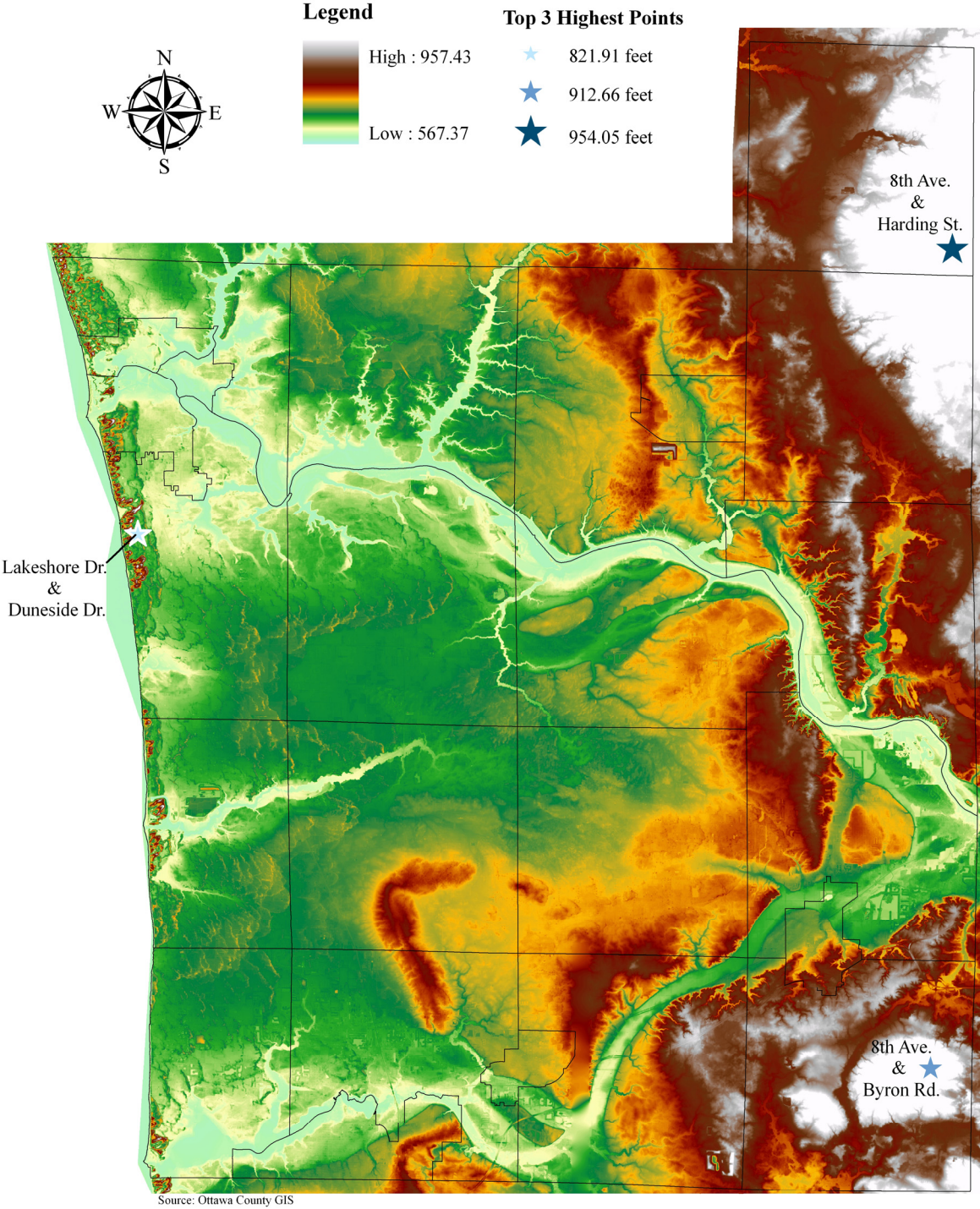


Elevations (Ottawa County)



Elevations (Ottawa County, Municipality)

Unit of Government	Feet Above Sea Level														Total Acreage*		
	Less than 600.0	600.0 to 649.9	650.0 to 699.9	700.0 to 749.9	750.0 to 799.9	800.0 to 849.9	850.0 to 899.9	900.0 or Higher	Acreage	%	Acreage	%	Acreage	%			
City/Village																	
Coopersville	0.0	0.0%	1,400.8	45.9%	1,647.0	54.0%	0.0	0.0%	0.8	0.1%	0.0	0.0%	0.0	0.0%	0.0	0.0%	3,048.6
Ferensburg	1,488.7	65.1%	743.2	32.5%	43.2	1.9%	10.1	0.4%	0.8	0.1%	0.0	0.0%	0.0	0.0%	0.0	0.0%	2,286.0
Grand Haven	1,766.9	43.8%	2,046.8	50.7%	185.1	4.6%	39.0	0.9%	0.0	0.0%	0.0	0.0%	0.0	0.0%	0.0	0.0%	4,037.8
Holland**	1,281.6	22.1%	3,500.5	60.2%	1,030.0	17.7%	0.0	0.0%	0.0	0.0%	0.0	0.0%	0.0	0.0%	0.0	0.0%	5,812.1
Hudsonville	14.5	0.6%	1,487.2	56.0%	877.8	33.0%	277.0	10.4%	0.0	0.0%	0.0	0.0%	0.0	0.0%	0.0	0.0%	2,656.5
Spring Lake	886.0	79.7%	225.2	20.3%	0.0	0.0%	0.0	0.0%	0.0	0.0%	0.0	0.0%	0.0	0.0%	0.0	0.0%	1,111.2
Zeeland	31.1	1.6%	1,355.7	70.7%	531.3	27.7%	0.0	0.0%	0.0	0.0%	0.0	0.0%	0.0	0.0%	0.0	0.0%	1,918.1
Township																	
Allendale	2,775.7	13.5%	10,885.0	53.0%	6,705.4	32.7%	166.5	0.8%	0.0	0.0%	0.0	0.0%	0.0	0.0%	0.0	0.0%	20,532.6
Blendon	15.5	0.1%	10,570.5	45.4%	12,682.0	54.4%	3.3	0.1%	0.0	0.0%	0.0	0.0%	0.0	0.0%	0.0	0.0%	23,271.3
Chester	0.0	0.0%	0.0	0.0%	1,491.8	6.5%	11,153.1	48.7%	4,492.9	19.6%	2,885.1	12.6%	1,583.4	6.9%	1,311.9	5.7%	22,918.2
Crockery	3,742.7	17.5%	17,450.3	81.7%	171.6	0.8%	0.0	0.0%	0.0	0.0%	0.0	0.0%	0.0	0.0%	0.0	0.0%	21,364.6
Georgetown	1,477.2	6.7%	10,268.7	47.1%	7,541.3	34.6%	2,519.9	11.6%	0.0	0.0%	0.0	0.0%	0.0	0.0%	0.0	0.0%	21,807.1
Grand Haven	4,034.0	21.3%	14,397.8	76.0%	338.0	1.8%	125.6	0.7%	19.1	0.1%	2.1	0.1%	0.0	0.0%	0.0	0.0%	18,916.6
Holland	1,488.7	8.5%	13,542.7	77.0%	2,565.3	14.5%	0.0	0.0%	0.0	0.0%	0.0	0.0%	0.0	0.0%	0.0	0.0%	17,596.7
Jamestown	0.0	0.0%	295.3	1.3%	5,719.6	25.2%	11,101.9	49.0%	3,392.8	14.9%	1,423.5	6.3%	726.6	3.2%	9.7	0.1%	22,669.4
Olive	342.0	1.5%	18,014.0	77.9%	4,777.0	20.6%	0.0	0.0%	0.0	0.0%	0.0	0.0%	0.0	0.0%	0.0	0.0%	23,133.0
Park	3,377.3	24.8%	10,113.5	74.3%	95.2	0.6%	22.2	0.2%	1.0	0.1%	0.0	0.0%	0.0	0.0%	0.0	0.0%	13,609.2
Polkton	938.7	3.7%	11,413.7	44.9%	12,060.6	47.5%	984.5	3.9%	0.0	0.0%	0.0	0.0%	0.0	0.0%	0.0	0.0%	25,397.5
Port Sheldon	1,353.2	9.3%	12,831.6	88.7%	235.8	1.6%	44.4	0.3%	4.3	0.1%	0.0	0.0%	0.0	0.0%	0.0	0.0%	14,469.3
Robinson	2,700.8	10.6%	22,588.3	89.3%	4.9	0.1%	0.0	0.0%	0.0	0.0%	0.0	0.0%	0.0	0.0%	0.0	0.0%	25,294.0
Spring Lake	3,671.4	34.3%	6,806.5	63.6%	189.6	1.8%	23.6	0.2%	4.2	0.1%	0.0	0.0%	0.0	0.0%	0.0	0.0%	10,695.3
Tallmadge	2,048.5	9.7%	3,807.0	18.0%	9,644.1	45.7%	5,263.9	24.9%	346.0	1.7%	0.0	0.0%	0.0	0.0%	0.0	0.0%	21,109.5
Wright	0.0	0.0%	128.5	0.5%	7,856.0	33.9%	8,177.8	35.3%	4,116.6	17.7%	1,802.9	7.8%	873.6	3.8%	239.3	1.0%	23,194.7
Zeeland	671.0	3.0%	6,669.9	30.3%	9,820.9	44.6%	4,633.4	21.0%	234.3	1.1%	0.0	0.0%	0.0	0.0%	0.0	0.0%	22,029.5
Ottawa County	34,105.5	9.2%	180,542.7	48.9%	86,213.5	23.4%	44,546.2	12.1%	12,612.8	3.4%	6,113.6	1.7%	3,183.6	0.9%	1,560.9	0.4%	368,878.8

Source: Ottawa County GIS, 2008

* The acreage will vary slightly depending on the source

** This represents the portion of Holland City located within Ottawa County