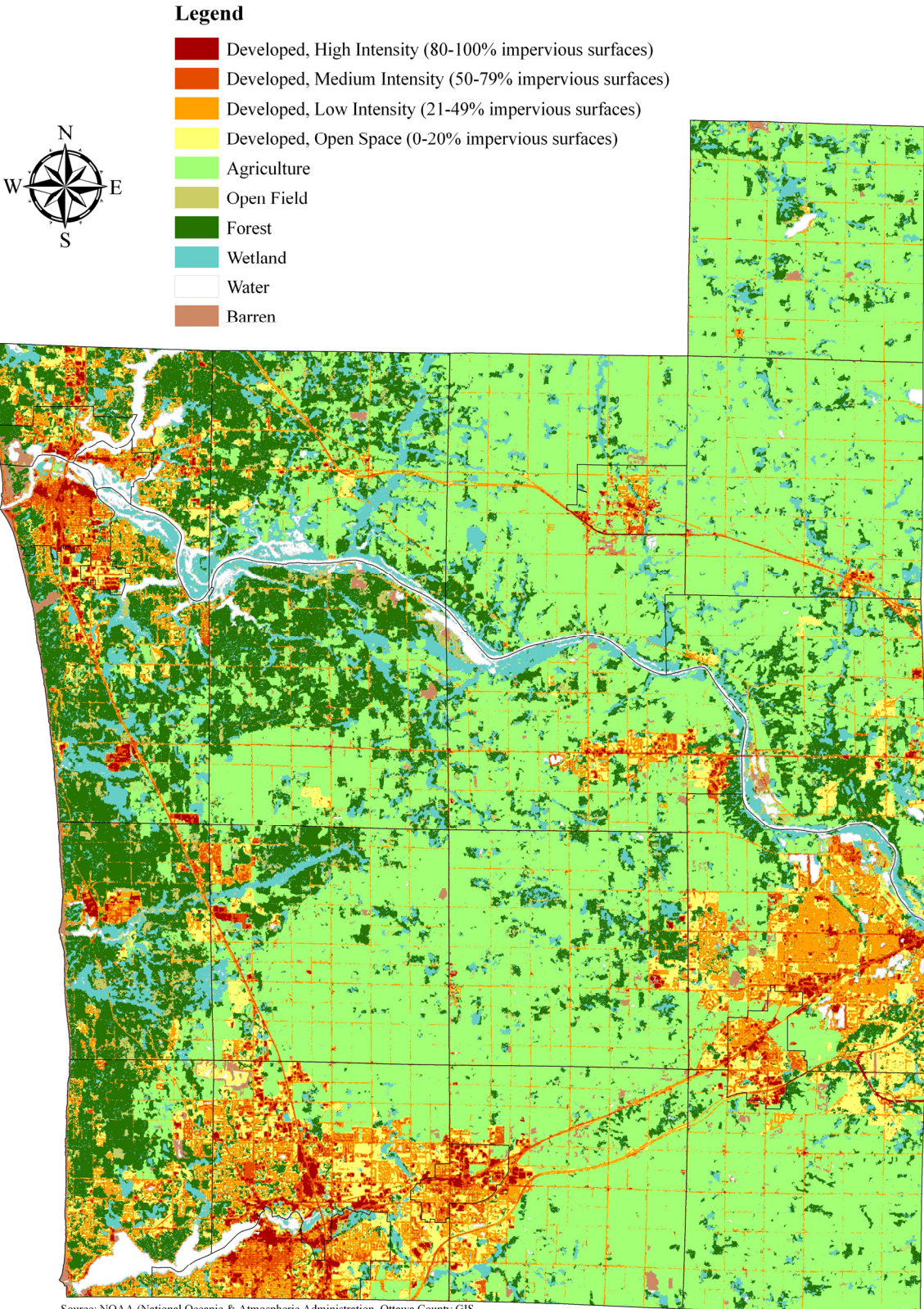


# Land Cover in 2006 (Ottawa County)



# Land Cover in 2006 (Ottawa County, Municipality)

Unit of Government	Developed, High Intensity*		Developed, Medium Intensity*		Developed, Low Intensity*		Developed, Open Space*		Agriculture*	
	Acreage	%	Acreage	%	Acreage	%	Acreage	%	Acreage	%
<i>City/Village</i>										
Coopersville	88.6	2.9%	231.1	7.6%	467.8	15.3%	155.9	5.1%	1,783.7	58.5%
Ferrysburg	88.0	3.9%	205.5	9.0%	443.5	19.4%	282.4	12.4%	2.7	0.1%
Grand Haven	450.3	11.2%	989.7	24.5%	847.6	21.0%	381.4	9.4%	19.1	0.4%
Holland**	581.0	10.0%	1,191.2	20.5%	1,825.2	31.4%	1,030.7	17.8%	43.8	0.8%
Hudsonville	193.2	7.3%	493.4	18.6%	833.4	31.4%	542.1	20.4%	443.5	16.7%
Spring Lake	62.7	5.6%	136.3	12.3%	255.4	23.0%	74.8	6.7%	0.8	0.1%
Zeeland	286.4	14.9%	533.5	27.8%	594.9	31.0%	340.5	17.7%	117.1	6.1%
<i>Township</i>										
Allendale	146.6	0.7%	509.7	2.5%	1,511.4	7.4%	771.9	3.8%	11,770.5	57.3%
Blendon	71.2	0.3%	111.4	0.5%	1,004.1	4.3%	306.6	1.3%	17,076.0	73.4%
Chester	4.5	0.1%	29.9	0.1%	801.0	3.5%	27.1	0.1%	17,898.6	78.2%
Crockery	18.4	0.1%	146.0	0.7%	962.7	4.5%	586.2	2.7%	6,867.0	32.2%
Georgetown	524.6	2.4%	1,745.0	8.0%	6,209.3	28.5%	3,643.3	16.7%	5,302.3	24.3%
Grand Haven	311.7	1.6%	598.6	3.2%	2,126.0	11.2%	1,191.7	6.3%	1,806.8	9.5%
Holland	1,035.9	5.9%	2,027.5	11.5%	4,082.0	23.2%	3,529.1	20.1%	4,528.4	25.7%
Jamestown	88.7	0.4%	159.7	0.7%	1,074.3	4.8%	1,111.6	4.9%	17,603.7	77.7%
Olive	136.2	0.6%	422.0	1.8%	1,350.0	5.8%	747.7	3.3%	15,039.8	64.9%
Park	72.1	0.5%	415.8	3.1%	2,280.3	16.8%	1,566.2	11.5%	1,203.4	8.8%
Polkton	10.6	0.1%	127.3	0.5%	868.1	3.4%	34.8	0.1%	19,619.8	77.2%
Port Sheldon	156.0	1.1%	347.1	2.4%	1,347.5	9.3%	483.9	3.3%	1,027.2	7.1%
Robinson	8.7	0.1%	126.5	0.5%	905.0	3.6%	209.8	0.8%	9,597.5	37.9%
Spring Lake	157.7	1.5%	417.0	3.9%	1,481.7	13.9%	1,257.9	11.8%	151.0	1.4%
Tallmadge	75.0	0.4%	227.4	1.1%	1,125.8	5.3%	1,227.3	5.8%	10,279.3	48.7%
Wright	33.0	0.1%	175.3	0.8%	950.3	4.1%	114.1	0.5%	19,120.6	82.4%
Zeeland	162.7	0.7%	614.2	2.8%	1,959.5	8.9%	966.3	4.4%	16,311.9	74.0%
<b>Ottawa County</b>	<b>4,763.8</b>	<b>1.3%</b>	<b>11,981.1</b>	<b>3.3%</b>	<b>35,306.8</b>	<b>9.6%</b>	<b>20,583.3</b>	<b>5.6%</b>	<b>177,614.5</b>	<b>48.1%</b>

Source: NOAA (National Oceanic & Atmospheric Administration), Ottawa County GIS

\* See the Glossary of Terms for the definitions

\*\* This represents the portion of Holland City located within Ottawa County

# Land Cover in 2006 (Ottawa County, Municipality)

Unit of Government	Open Field*		Forest*		Wetland*		Water*		Barren*		Total Acreage**
	Acreage	%	Acreage	%	Acreage	%	Acreage	%	Acreage	%	
<i>City/Village</i>											
Coopersville	11.4	0.4%	114.7	3.8%	154.6	5.1%	10.4	0.3%	30.0	1.0%	3,048.2
Ferrysburg	25.4	1.1%	538.1	23.6%	121.9	5.3%	400.0	17.5%	177.3	7.7%	2,284.8
Grand Haven	61.5	1.5%	499.7	12.4%	226.2	5.6%	324.8	8.1%	236.4	5.9%	4,036.7
Holland***	29.1	0.5%	368.9	6.4%	327.8	5.6%	400.3	6.9%	5.6	0.1%	5,803.6
Hudsonville	4.2	0.2%	94.3	3.5%	48.7	1.8%	0.0	0.0%	3.9	0.1%	2,656.7
Spring Lake	0.0	0.0%	43.3	3.9%	112.9	10.2%	421.2	37.9%	4.0	0.3%	1,111.4
Zeeland	0.0	0.0%	16.7	0.9%	19.1	1.0%	0.0	0.0%	11.7	0.6%	1,919.9
<i>Township</i>											
Allendale	305.8	1.5%	2,392.7	11.6%	2,366.1	11.5%	610.9	3.0%	147.2	0.7%	20,532.8
Blendon	219.3	0.9%	2,890.9	12.4%	1,414.2	6.1%	47.7	0.2%	129.9	0.6%	23,271.3
Chester	104.6	0.5%	2,095.2	9.1%	1,644.8	7.2%	146.7	0.6%	148.0	0.6%	22,900.4
Crockery	693.7	3.2%	6,992.8	32.7%	4,225.3	19.8%	804.2	3.8%	60.1	0.3%	21,356.4
Georgetown	171.2	0.8%	2,023.7	9.3%	1,232.7	5.6%	763.4	3.5%	192.4	0.9%	21,807.9
Grand Haven	743.5	3.9%	7,769.9	41.1%	3,437.5	18.2%	615.6	3.3%	321.3	1.7%	18,922.6
Holland	57.0	0.3%	1,067.5	6.1%	853.4	4.9%	252.6	1.4%	160.5	0.9%	17,593.9
Jamestown	20.9	0.1%	1,634.6	7.2%	750.0	3.3%	24.5	0.1%	191.3	0.8%	22,659.3
Olive	407.3	1.8%	3,398.2	14.7%	1,531.1	6.6%	52.9	0.2%	77.3	0.3%	23,162.5
Park	191.1	1.4%	5,381.4	39.5%	916.5	6.7%	1,259.5	9.3%	323.6	2.4%	13,609.9
Polkton	124.5	0.5%	1,859.4	7.3%	2,337.3	9.2%	307.6	1.2%	135.5	0.5%	25,424.9
Port Sheldon	1,029.4	7.1%	7,339.0	50.8%	2,316.7	16.0%	172.2	1.2%	243.3	1.7%	14,462.3
Robinson	1,138.0	4.5%	9,274.6	36.7%	3,118.6	12.3%	686.4	2.7%	229.1	0.9%	25,294.2
Spring Lake	183.0	1.7%	4,388.2	41.0%	1,447.2	13.5%	1,121.8	10.5%	80.9	0.8%	10,686.4
Tallmadge	325.5	1.5%	4,506.9	21.4%	2,521.5	11.9%	659.2	3.1%	160.8	0.8%	21,108.7
Wright	86.0	0.4%	1,106.7	4.8%	1,456.2	6.3%	124.9	0.5%	30.4	0.1%	23,197.5
Zeeland	32.9	0.1%	985.4	4.5%	617.2	2.8%	56.2	0.3%	324.9	1.5%	22,031.2
<b>Ottawa County</b>	<b>5,965.3</b>	<b>1.6%</b>	<b>66,782.8</b>	<b>18.1%</b>	<b>33,197.5</b>	<b>9.0%</b>	<b>9,263.0</b>	<b>2.5%</b>	<b>3,425.4</b>	<b>0.9%</b>	<b>368,883.5</b>

Source: NOAA (National Oceanic & Atmospheric Administration), Ottawa County GIS

\* See the Glossary of Terms for the definitions

\*\* The acreage will vary slightly depending on the source

\*\*\*This represents the portion of Holland City located within Ottawa County