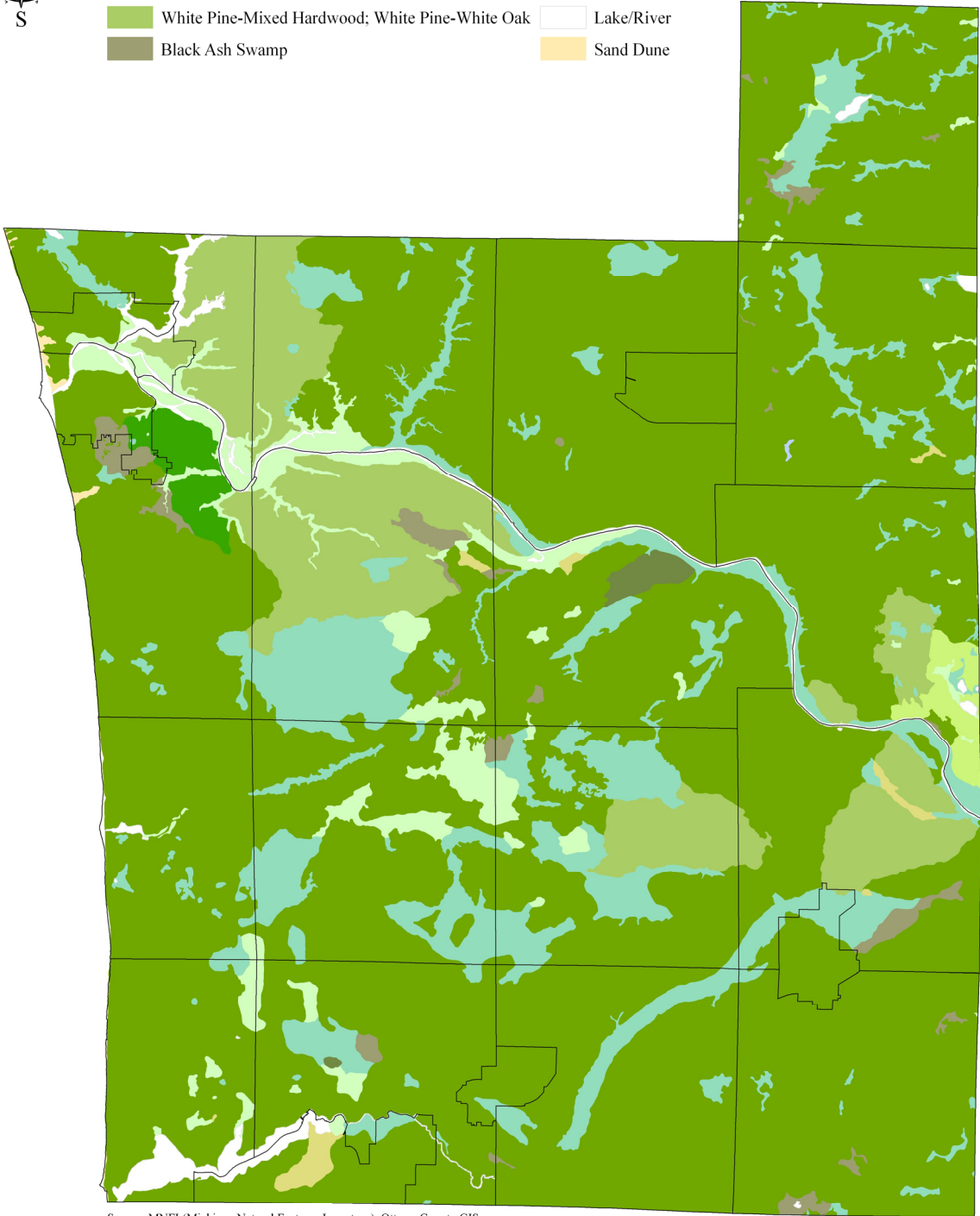
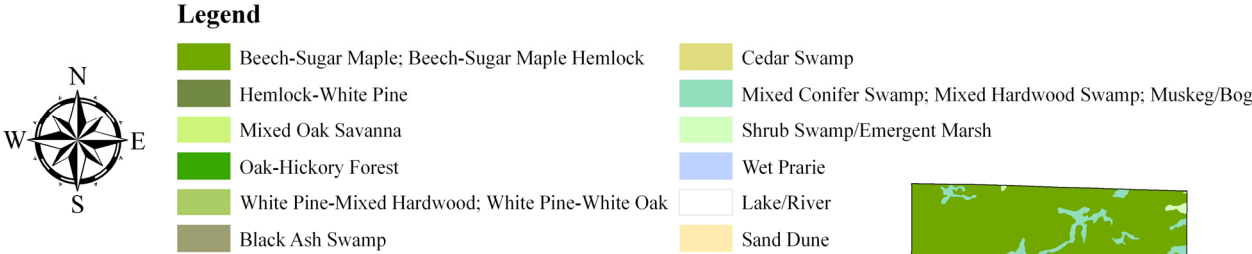


Pre-Settlement Land Cover in 1800s (Ottawa County)



Source: MNFI (Michigan Natural Features Inventory), Ottawa County GIS

Pre-Settlement Land Cover in 1800s (Ottawa County, Municipality)

Unit of Government	Forested Land*													
	Beech-Sugar Maple Acreage	%	Beech-Sugar Maple Hemlock Acreage	%	Hemlock-White Pine Acreage	%	Mixed Oak Savanna Acreage	%	Oak-Hickory Forest Acreage	%	White Pine-Mixed Hardwood Acreage	%	White Pine-White Oak Acreage	%
<i>City/Village</i>														
Coopersville	2,984.6	97.9%	63.5	2.1%	0.0	0.0%	0.0	0.0%	0.0	0.0%	0.0	0.0%	0.0	0.0%
Ferrysburg	0.0	0.0%	1,536.7	67.2%	0.0	0.0%	0.0	0.0%	0.0	0.0%	0.0	0.0%	0.0	0.0%
Grand Haven	2,232.6	57.8%	0.0	0.0%	0.0	0.0%	0.0	0.0%	357.7	9.3%	0.0	0.0%	0.0	0.0%
Holland**	2,436.0	42.0%	1,685.5	29.0%	0.0	0.0%	0.0	0.0%	0.0	0.0%	0.0	0.0%	0.0	0.0%
Hudsonville	0.0	0.0%	2,061.1	77.6%	0.0	0.0%	0.0	0.0%	0.0	0.0%	42.7	1.6%	0.0	0.0%
Spring Lake	0.0	0.0%	0.0	0.0%	0.0	0.0%	0.0	0.0%	0.0	0.0%	470.7	42.4%	0.0	0.0%
Zeeland	1,415.8	73.7%	403.3	21.0%	0.0	0.0%	0.0	0.0%	0.0	0.0%	0.0	0.0%	0.0	0.0%
<i>Township</i>														
Allendale	8,714.4	42.4%	6,499.9	31.7%	1,020.9	5.0%	0.0	0.0%	0.0	0.0%	0.0	0.0%	213.0	1.0%
Blendon	6,796.8	29.2%	5,144.6	22.1%	0.0	0.0%	0.0	0.0%	0.0	0.0%	3,835.7	16.5%	0.0	0.0%
Chester	18,337.1	80.0%	871.0	3.8%	0.0	0.0%	0.0	0.0%	0.0	0.0%	0.0	0.0%	0.0	0.0%
Crockery	6,261.6	29.3%	7,150.8	33.5%	0.0	0.0%	0.0	0.0%	0.0	0.0%	4,243.8	19.9%	46.7	0.2%
Georgetown	12,689.4	58.2%	0.0	0.0%	0.0	0.0%	0.0	0.0%	0.0	0.0%	5,594.7	25.7%	0.0	0.0%
Grand Haven	0.0	0.0%	13,444.2	71.1%	0.0	0.0%	0.0	0.0%	2,461.1	13.0%	0.0	0.0%	421.3	2.2%
Holland	7,774.1	44.2%	6,971.9	39.6%	62.3	0.4%	0.0	0.0%	0.0	0.0%	0.0	0.0%	0.0	0.0%
Jamestown	21,602.2	95.3%	0.0	0.0%	0.0	0.0%	0.0	0.0%	0.0	0.0%	0.0	0.0%	0.0	0.0%
Olive	2,260.2	9.8%	13,397.9	57.8%	0.0	0.0%	0.0	0.0%	0.0	0.0%	0.0	0.0%	0.0	0.0%
Park	0.0	0.0%	11,220.2	82.6%	0.0	0.0%	0.0	0.0%	0.0	0.0%	0.0	0.0%	0.0	0.0%
Polkton	16,076.4	63.2%	7,911.7	31.1%	0.0	0.0%	0.0	0.0%	0.0	0.0%	0.0	0.0%	0.0	0.0%
Port Sheldon	0.0	0.0%	13,264.1	92.3%	0.0	0.0%	0.0	0.0%	0.0	0.0%	0.0	0.0%	0.0	0.0%
Robinson	4,839.4	19.1%	0.0	0.0%	0.0	0.0%	0.0	0.0%	0.0	0.0%	0.0	0.0%	11,135.2	44.0%
Spring Lake	0.0	0.0%	3,893.0	36.4%	0.0	0.0%	0.0	0.0%	0.0	0.0%	3,079.1	28.8%	1,438.9	13.5%
Tallmadge	14,585.2	69.1%	0.0	0.0%	0.0	0.0%	2,105.7	10.0%	0.0	0.0%	2,265.6	10.7%	0.0	0.0%
Wright	20,321.6	87.6%	0.0	0.0%	0.0	0.0%	0.0	0.0%	0.0	0.0%	0.0	0.0%	0.0	0.0%
Zeeland	18,522.6	84.1%	988.3	4.5%	0.0	0.0%	0.0	0.0%	0.0	0.0%	0.0	0.0%	0.0	0.0%
Ottawa County	167,850.0	45.5%	96,507.7	26.2%	1,083.2	0.3%	2,105.7	0.6%	2,818.8	0.8%	19,532.3	5.3%	13,255.1	3.5%

Source: MNFI (Michigan Natural Features Inventory), Ottawa County GIS

* Between 1816 and 1856, Michigan was systematically surveyed by the General Land Office (GLO), which had been established by the federal government in 1785. The detailed notes taken by the land surveyors have proven to be a useful source of information on Michigan's landscape as it appeared prior to wide-spread European settlement. See the Glossary of Terms for the definitions

** This represents the portion of Holland City located within Ottawa County

Pre-Settlement Land Cover in 1800s (Ottawa County, Municipality)

Unit of Government	Wetland*												Other Land Cover**																										
	Black Ash Swamp			Cedar Swamp			Mixed Conifer Swamp			Mixed Hardwood Swamp			Muskeg/Bog			Shrub Swamp/ Emergent Marsh			Wet Prairie			Lake/River			Sand Dune			Total											
	Acreage	%	Acreage	%	Acreage	%	Acreage	%	Acreage	%	Acreage	%	Acreage	%	Acreage	%	Acreage	%	Acreage	%	Acreage	%	Acreage	%	Acreage	%	Acreage	%	Acreage	%									
City/Village																																							
Coopersville	0.0	0.0%	0.0	0.0%	0.0	0.0%	0.0	0.0%	0.0	0.0%	0.0	0.0%	0.0	0.0%	0.0	0.0%	0.0	0.0%	0.0	0.0%	0.0	0.0%	0.0	0.0%	0.0	0.0%	0.0	0.0%	0.0	0.0%	0.0	0.0%	3,048.1	0.0%					
Ferrysburg	0.0	0.0%	0.0	0.0%	146.6	6.4%	0.0	0.0%	0.0	0.0%	0.0	0.0%	203.1	8.9%	0.0	0.0%	203.1	8.9%	0.0	0.0%	305.7	13.4%	93.6	4.1%	2,285.7	0.0	0.0%	0.0	0.0%	0.0	0.0%	0.0	0.0%	0.0	0.0%	2,285.7	0.0%		
Grand Haven	446.7	11.6%	0.0	0.0%	0.0	0.0%	9.0	0.2%	0.0	0.0%	479.1	12.4%	0.0	0.0%	93.7	1.6%	479.1	12.4%	0.0	0.0%	257.3	6.6%	81.1	2.1%	3,863.5	0.0	0.0%	0.0	0.0%	590.5	10.2%	0.0	0.0%	0.0	0.0%	3,863.5	0.0%		
Holland***	0.0	0.0%	777.4	13.4%	209.3	3.6%	9.7	0.2%	423.6	16.0%	0.0	0.0%	0.0	0.0%	0.0	0.0%	389.3	35.0%	0.0	0.0%	251.3	22.6%	0.0	0.0%	5,802.1	0.0	0.0%	0.0	0.0%	0.0	0.0%	0.0	0.0%	0.0	0.0%	5,802.1	0.0%		
Hudsonville	3.5	0.1%	0.0	0.0%	125.9	4.7%	0.0	0.0%	0.0	0.0%	0.0	0.0%	0.0	0.0%	0.0	0.0%	0.0	0.0%	0.0	0.0%	0.0	0.0%	0.0	0.0%	2,656.8	0.0	0.0%	0.0	0.0%	0.0	0.0%	0.0	0.0%	0.0	0.0%	2,656.8	0.0%		
Spring Lake	0.0	0.0%	0.0	0.0%	0.0	0.0%	0.0	0.0%	0.0	0.0%	0.0	0.0%	0.0	0.0%	0.0	0.0%	0.0	0.0%	0.0	0.0%	0.0	0.0%	0.0	0.0%	1,111.3	0.0	0.0%	0.0	0.0%	0.0	0.0%	0.0	0.0%	0.0	0.0%	1,111.3	0.0%		
Zeeland	0.0	0.0%	0.0	0.0%	101.0	5.3%	0.0	0.0%	0.0	0.0%	0.0	0.0%	0.0	0.0%	0.0	0.0%	0.0	0.0%	0.0	0.0%	0.0	0.0%	0.0	0.0%	1,920.1	0.0	0.0%	0.0	0.0%	0.0	0.0%	0.0	0.0%	0.0	0.0%	1,920.1	0.0%		
Township																																							
Allendale	112.8	0.5%	106.8	0.5%	405.2	2.0%	2,175.4	10.6%	0.0	0.0%	921.4	4.5%	0.0	0.0%	0.0	0.0%	362.6	1.8%	0.0	0.0%	0.0	0.0%	0.0	0.0%	20,532.4	0.0	0.0%	0.0	0.0%	0.0	0.0%	0.0	0.0%	0.0	0.0%	20,532.4	0.0%		
Blendon	146.4	0.6%	0.0	0.0%	3,131.6	13.5%	3,413.6	14.7%	0.0	0.0%	802.5	3.4%	0.0	0.0%	0.0	0.0%	0.0	0.0%	0.0	0.0%	125.9	0.5%	0.0	0.0%	0.0	0.0%	23,271.2	0.0	0.0%	0.0	0.0%	0.0	0.0%	0.0	0.0%	0.0	0.0%	23,271.2	0.0%
Chester	441.1	1.9%	0.0	0.0%	278.5	1.2%	2,577.1	11.3%	0.0	0.0%	290.0	1.3%	0.0	0.0%	0.0	0.0%	0.0	0.0%	0.0	0.0%	0.0	0.0%	0.0	0.0%	22,920.7	0.0	0.0%	0.0	0.0%	0.0	0.0%	0.0	0.0%	0.0	0.0%	0.0	0.0%	22,920.7	0.0%
Crockery	0.0	0.0%	0.0	0.0%	120.6	0.6%	2,276.4	10.7%	0.0	0.0%	966.3	4.5%	0.0	0.0%	0.0	0.0%	0.0	0.0%	0.0	0.0%	290.5	1.3%	0.0	0.0%	0.0	0.0%	21,356.7	0.0	0.0%	0.0	0.0%	0.0	0.0%	0.0	0.0%	0.0	0.0%	21,356.7	0.0%
Georgetown	636.8	2.9%	289.9	1.3%	815.3	3.7%	1,592.3	7.3%	0.0	0.0%	0.0	0.0%	0.0	0.0%	0.0	0.0%	193.5	0.9%	0.0	0.0%	0.0	0.0%	0.0	0.0%	21,811.9	0.0	0.0%	0.0	0.0%	0.0	0.0%	0.0	0.0%	0.0	0.0%	21,811.9	0.0%		
Grand Haven	651.1	3.4%	0.0	0.0%	463.2	2.4%	290.5	1.6%	0.0	0.0%	814.1	4.3%	0.0	0.0%	0.0	0.0%	289.4	1.5%	0.0	0.0%	0.0	0.0%	85.5	0.5%	18,920.4	0.0	0.0%	0.0	0.0%	0.0	0.0%	0.0	0.0%	0.0	0.0%	0.0	0.0%	18,920.4	0.0%
Holland	245.9	1.4%	0.4	0.1%	1,244.2	7.1%	164.3	0.9%	112.2	0.6%	745.6	4.2%	0.0	0.0%	0.0	0.0%	269.9	1.5%	0.0	0.0%	0.0	0.0%	0.0	0.0%	17,590.8	0.0	0.0%	0.0	0.0%	0.0	0.0%	0.0	0.0%	0.0	0.0%	0.0	0.0%	17,590.8	0.0%
Jamestown	508.8	2.2%	0.0	0.0%	253.8	1.1%	285.5	1.2%	0.0	0.0%	3.5	0.1%	0.0	0.0%	0.0	0.0%	12.9	0.1%	0.0	0.0%	0.0	0.0%	0.0	0.0%	22,666.7	0.0	0.0%	0.0	0.0%	0.0	0.0%	0.0	0.0%	0.0	0.0%	0.0	0.0%	22,666.7	0.0%
Olive	98.5	0.4%	0.0	0.0%	4,752.0	20.5%	41.5	0.2%	139.7	0.6%	2,472.7	10.7%	0.0	0.0%	0.0	0.0%	0.0	0.0%	0.0	0.0%	0.0	0.0%	0.0	0.0%	23,162.5	0.0	0.0%	0.0	0.0%	0.0	0.0%	0.0	0.0%	0.0	0.0%	0.0	0.0%	23,162.5	0.0%
Park	0.0	0.0%	8.7	0.1%	114.9	0.8%	0.0	0.0%	84.9	0.6%	814.7	6.0%	0.0	0.0%	0.0	0.0%	1,310.3	9.6%	0.0	0.0%	0.0	0.0%	37.7	0.3%	13,591.4	0.0	0.0%	0.0	0.0%	0.0	0.0%	0.0	0.0%	0.0	0.0%	0.0	0.0%	13,591.4	0.0%
Polkton	25.2	0.1%	0.0	0.0%	0.0	0.0%	1,236.4	4.9%	0.0	0.0%	0.0	0.0%	0.0	0.0%	0.0	0.0%	181.8	0.7%	0.0	0.0%	0.0	0.0%	0.0	0.0%	25,431.5	0.0	0.0%	0.0	0.0%	0.0	0.0%	0.0	0.0%	0.0	0.0%	0.0	0.0%	25,431.5	0.0%
Port Sheldon	0.0	0.0%	0.0	0.0%	406.6	2.8%	297.5	2.1%	86.2	0.6%	191.8	1.3%	0.0	0.0%	0.0	0.0%	99.3	0.7%	0.0	0.0%	0.0	0.0%	25.8	0.2%	14,371.3	0.0	0.0%	0.0	0.0%	0.0	0.0%	0.0	0.0%	0.0	0.0%	0.0	0.0%	14,371.3	0.0%
Robinson	739.4	2.9%	125.0	0.5%	1,685.2	6.7%	397.6	1.6%	3,721.8	14.7%	2,376.0	9.4%	0.0	0.0%	0.0	0.0%	274.4	1.1%	0.0	0.0%	0.0	0.0%	0.0	0.0%	25,294.0	0.0	0.0%	0.0	0.0%	0.0	0.0%	0.0	0.0%	0.0	0.0%	0.0	0.0%	25,294.0	0.0%
Spring Lake	0.0	0.0%	0.0	0.0%	616.6	5.8%	13.7	0.1%	0.0	0.0%	703.3	6.6%	0.0	0.0%	0.0	0.0%	917.2	8.6%	0.0	0.0%	0.0	0.0%	23.3	0.2%	10,685.1	0.0	0.0%	0.0	0.0%	0.0	0.0%	0.0	0.0%	0.0	0.0%	0.0	0.0%	10,685.1	0.0%
Tallmadge	23.4	0.1%	0.0	0.0%	334.6	1.6%	1,194.2	5.6%	0.0	0.0%	208.1	1.0%	0.0	0.0%	0.0	0.0%	398.9	1.9%	0.0	0.0%	0.0	0.0%	0.0	0.0%	21,115.7	0.0	0.0%	0.0	0.0%	0.0	0.0%	0.0	0.0%	0.0	0.0%	0.0	0.0%	21,115.7	0.0%
Wright	39.9	0.2%	77.4	0.3%	161.6	0.7%	2,295.6	9.9%	27.0	0.1%	123.1	0.5%	36.1	0.2%	0.0	0.0%	118.7	0.5%	0.0	0.0%	0.0	0.0%	0.0	0.0%	23,201.0	0.0	0.0%	0.0	0.0%	0.0	0.0%	0.0	0.0%	0.0	0.0%	0.0	0.0%	23,201.0	0.0%
Zeeland	25.2	0.1%	0.0	0.0%	410.1	1.8%	2,089.8	9.5%	0.0	0.0%	0.0	0.0%	0.0	0.0%	0.0	0.0%	0.0	0.0%	0.0	0.0%	0.0	0.0%	0.0	0.0%	22,036.0	0.0	0.0%	0.0	0.0%	0.0	0.0%	0.0	0.0%	0.0	0.0%	0.0	0.0%	22,036.0	0.0%
Ottawa County	4,144.7	1.1%	1,385.6	0.4%	15,776.8	4.3%	20,783.7	5.6%	4,171.8	1.1%	12,598.3	3.4%	36.1	0.1%	6,250.1	1.7%	347.0	0.1%	6,250.1	1.7%	347.0	0.1%	368,646.9	0.1%	368,646.9	0.1%	368,646.9	0.1%	368,646.9	0.1%	368,646.9	0.1%	368,646.9	0.1%	368,646.9	0.1%	368,646.9	0.1%	

Source: MNFI (Michigan Natural Features Inventory), Ottawa County GIS

* Between 1816 and 1856, Michigan was systematically surveyed by the General Land Office (GLO), which had been established by the federal government in 1785. The detailed notes taken by the land surveyors have proven to be a useful source of information on Michigan's landscape as it appeared prior to wide-spread European settlement. See the Glossary of Terms for the definitions

** The acreage will vary slightly depending on the source

***This represents the portion of Holland City located within Ottawa County