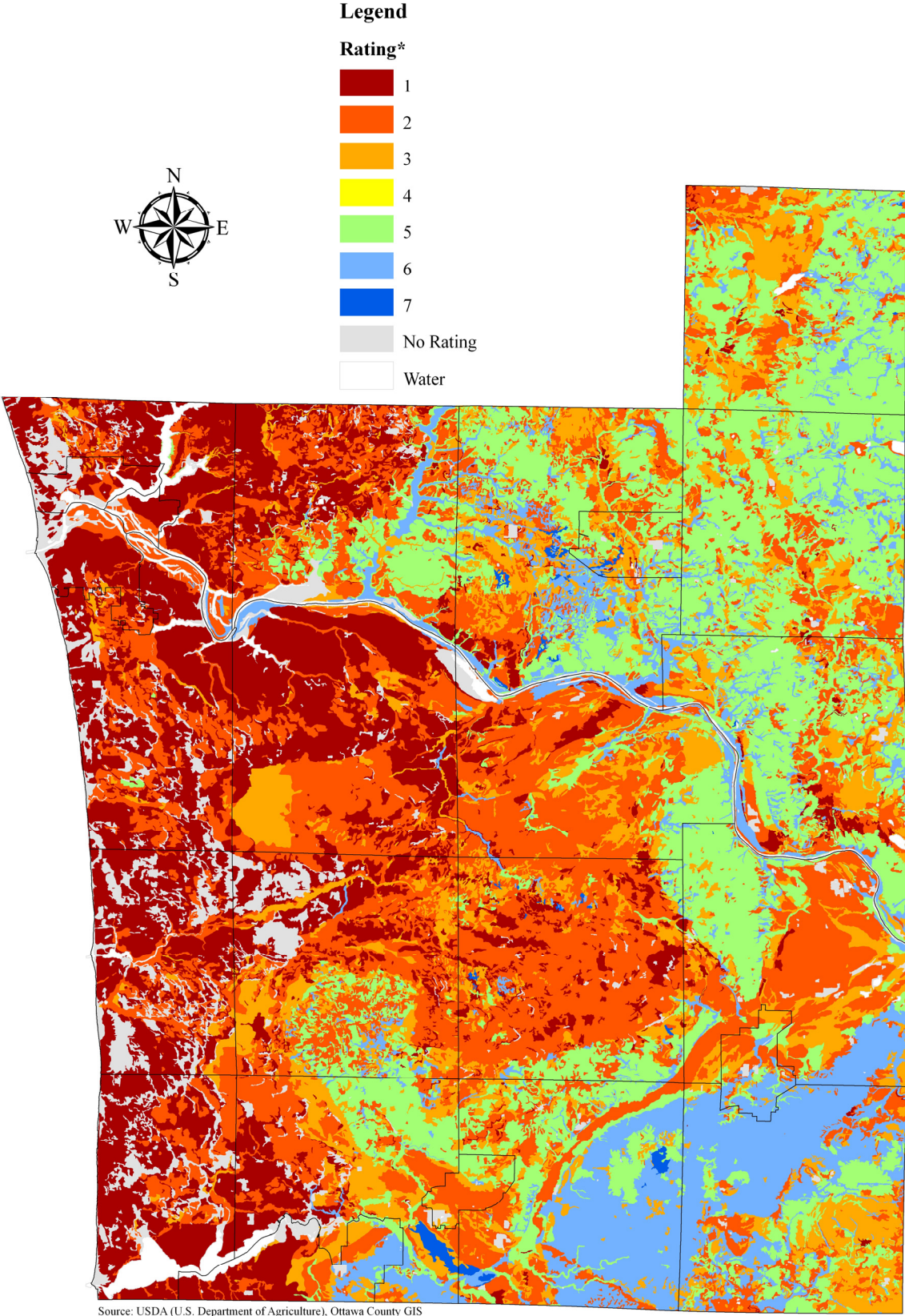


Soil Susceptibility to Wind Erosion (Ottawa County)



* Soils with a 1 rating are most susceptible to wind erosion, while soils with a 7 rating are least susceptible to wind erosion

Soil Susceptibility to Wind Erosion (Ottawa County, Municipality)

Unit of Government	High (1 Rating)		Moderate/High (2 Rating)		Moderate (3 Rating)		Low/Moderate (4, 5 Rating)		Low (6, 7 Rating)		No Rating*		Total Acreage**
	Acreage	%	Acreage	%	Acreage	%	Acreage	%	Acreage	%	Acreage	%	
<i>City/Village</i>													
Coopersville	21.1	0.7%	625.7	20.5%	659.8	21.6%	1,290.2	42.3%	363.6	11.9%	81.1	2.7%	3,047.9
Ferrysburg	944.0	41.4%	307.2	13.5%	19.1	0.8%	0.0	0.0%	0.0	0.0%	645.3	28.3%	2,277.9
Grand Haven	2,194.8	54.6%	883.3	22.0%	40.5	1.0%	0.0	0.0%	0.8	0.1%	615.0	15.3%	4,022.3
Holland***	1,864.5	32.2%	1,156.7	20.0%	865.2	14.9%	299.9	5.2%	862.7	14.9%	357.0	6.2%	5,792.2
Hudsonville	0.0	0.0%	739.9	27.8%	532.3	20.0%	421.6	15.9%	889.9	33.5%	73.2	2.8%	2,656.9
Spring Lake	462.0	41.5%	294.3	26.4%	0.0	0.0%	0.0	0.0%	0.0	0.0%	39.9	3.6%	1,113.2
Zeeland	0.0	0.0%	880.8	45.9%	465.0	24.2%	464.3	24.2%	20.3	1.1%	83.0	4.3%	1,920.0
<i>Township</i>													
Allendale	1,418.7	6.9%	10,628.5	51.8%	3,725.1	18.1%	2,902.8	14.1%	1,126.2	5.5%	249.0	1.2%	20,532.6
Blendon	3,150.5	13.5%	13,989.0	60.1%	2,762.3	11.9%	2,464.9	10.6%	640.5	2.8%	263.6	1.1%	23,271.2
Chester	182.2	0.8%	3,678.1	16.0%	5,081.5	22.2%	12,067.3	52.6%	1,717.3	7.5%	76.2	0.3%	22,921.5
Crockery	5,890.0	27.6%	7,336.6	34.3%	1,325.1	6.2%	4,034.6	18.9%	1,259.4	5.9%	1,227.2	5.7%	21,362.6
Georgetown	273.0	1.3%	8,523.7	39.1%	3,755.3	17.2%	6,027.9	27.6%	2,547.4	11.7%	498.9	2.3%	21,804.4
Grand Haven	9,977.4	52.7%	5,547.2	29.3%	343.0	1.8%	73.2	0.4%	17.0	0.1%	2,485.8	13.1%	18,916.8
Holland	2,689.1	15.3%	5,140.1	29.2%	3,750.9	21.3%	3,520.1	20.0%	1,445.6	8.2%	840.1	4.8%	17,587.9
Jamesstown	62.7	0.3%	3,023.9	13.3%	4,864.4	21.5%	4,087.5	18.0%	10,519.6	46.4%	85.6	0.4%	22,651.6
Olive	5,265.3	22.7%	8,524.1	36.8%	4,365.3	18.8%	2,307.4	10.0%	632.1	2.7%	2,066.4	8.9%	23,162.5
Park	7,181.8	52.8%	2,520.3	18.5%	200.2	1.5%	0.0	0.0%	0.0	0.0%	2,393.1	17.6%	13,589.8
Polkton	809.5	3.2%	5,182.6	20.4%	5,314.7	20.9%	9,382.7	36.9%	4,451.7	17.5%	90.3	0.4%	25,432.1
Port Sheldon	7,643.7	52.9%	2,708.0	18.8%	411.8	2.9%	0.0	0.0%	0.0	0.0%	3,537.0	24.5%	14,440.9
Robinson	12,764.1	50.5%	8,277.5	32.7%	2,663.4	10.5%	7.9	0.1%	326.5	1.3%	856.3	3.4%	25,293.9
Spring Lake	6,023.2	56.5%	2,051.4	19.2%	287.1	2.7%	57.4	0.5%	117.6	1.1%	1,210.1	11.3%	10,666.9
Tallmadge	802.2	3.8%	3,789.7	18.0%	3,740.4	17.7%	9,570.5	45.3%	2,655.2	12.6%	194.6	0.9%	21,106.3
Wright	52.7	0.2%	3,251.6	14.0%	2,892.4	12.5%	14,731.3	63.5%	2,039.6	8.8%	111.0	0.5%	23,186.6
Zeeland	163.2	0.7%	4,620.9	21.0%	2,451.2	11.1%	5,555.0	25.2%	9,042.3	41.1%	186.1	0.8%	22,025.4
Ottawa County	69,835.7	18.9%	103,681.1	28.1%	50,516.0	13.7%	79,266.5	21.5%	40,675.3	11.0%	18,265.8	5.0%	368,783.4

Source: USDA (U.S. Department of Agriculture), Ottawa County GIS, 1997

* Includes gravel and sand pits, marsh land, landfills, sewage lagoons, and land that has already been eroded by wind

** The acreage will vary slightly depending on the source

*** This represents the portion of Holland City located within Ottawa County