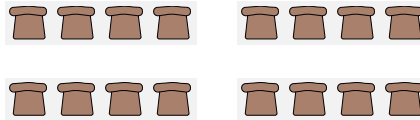


Room Set Up Styles and Information

NOTE: When choosing the people to chair ratio the rectangle tables sit 3 people to a table comfortably. In addition, the suggestions below to specify are examples of how to customize your request.

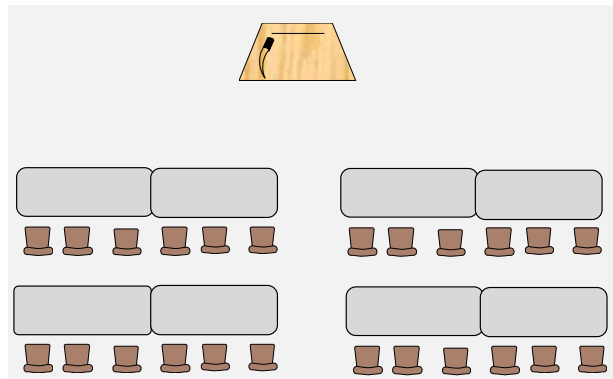
Auditorium Style: (chairs only)

When making a reservation, please specify the number of aisles you would prefer.

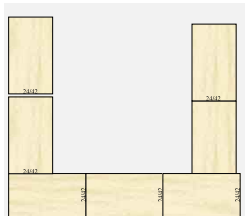


Classroom Style: (tables & chairs)

When making your reservation, please specify the number of people per table, table instead of podium and number of aisles you would prefer.



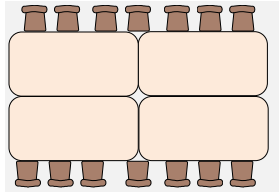
U Shape: (chairs around the outside)



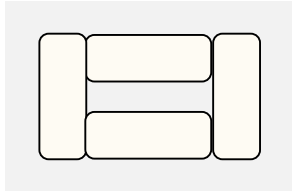
Room Set Up Styles and Information

Solid Rectangle:

This setting is our alternative to a round table. When you request this for a round table setting, we will also place chairs on the ends to create the round table feel.



Open Rectangle:

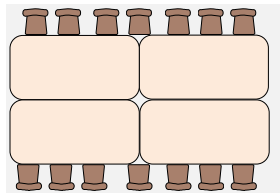


Groups: (tables put together with chairs all around)

This option allows for multiple groups within a room. You will want to be sure you specify how many groups you will need, how many chairs to each group and the group option you desire.

Options:

Groups- Solid Rectangle:



Groups- Open Rectangle:

